

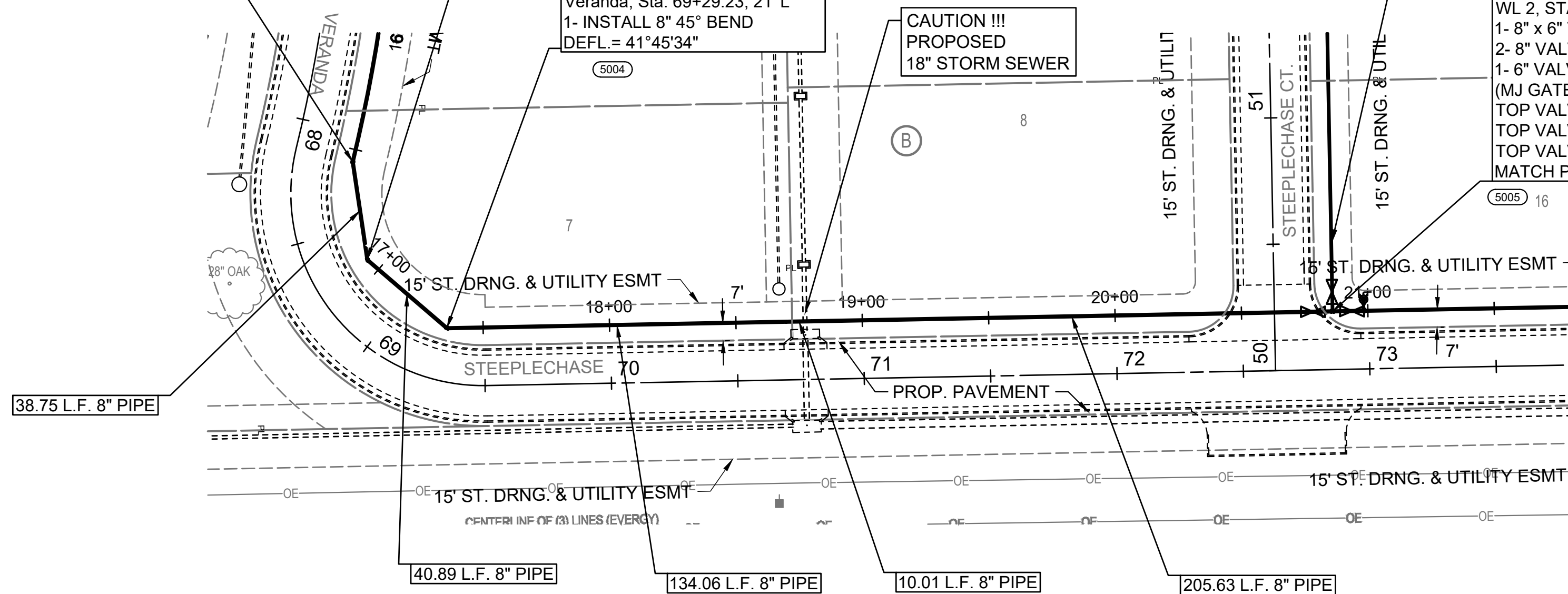
N: 384797.9105, E: 2371660.0165
 WL Line No. 1, Sta. 16+54.98=
 Veranda, Sta. 65+26.53, 23' L
 22 1/2° BEND
 PT CURVE
 MATCH POINT

N: 384759.1522, E: 2371665.7644
 WL Line No. 1, Sta. 16+94.16=
 Veranda, Sta. 68+69.36, 23' L
 1- INSTALL 8" 45° BEND
 DEFL. = 40°53'31"

N: 384732.1232, E: 2371697.2192
 WL Line No. 1, Sta. 17+35.63=
 Veranda, Sta. 69+29.23, 21' L
 1- INSTALL 8" 45° BEND
 DEFL. = 41°45'34"

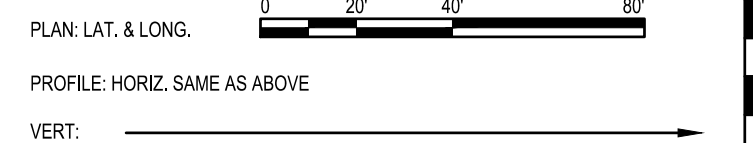
WATERLINE NO. 2
 SEE SHEET CU104

N: 384738.7704, E: 2372047.5686
 WL Line No. 1, STA. 20+86.05 =
 WL 2, STA. 50+00.00
 1- 8" x 6" TEE
 2- 8" VALVE ASSEMBLY (W&E)
 1- 6" VALVE ASSEMBLY (N)
 (MJ GATE VALVE)
 TOP VALVE BOX EL. = 1393.3 (W)
 TOP VALVE BOX EL. = 1393.4 (E)
 TOP VALVE BOX EL. = 1393.3 (N)
 MATCH POINT



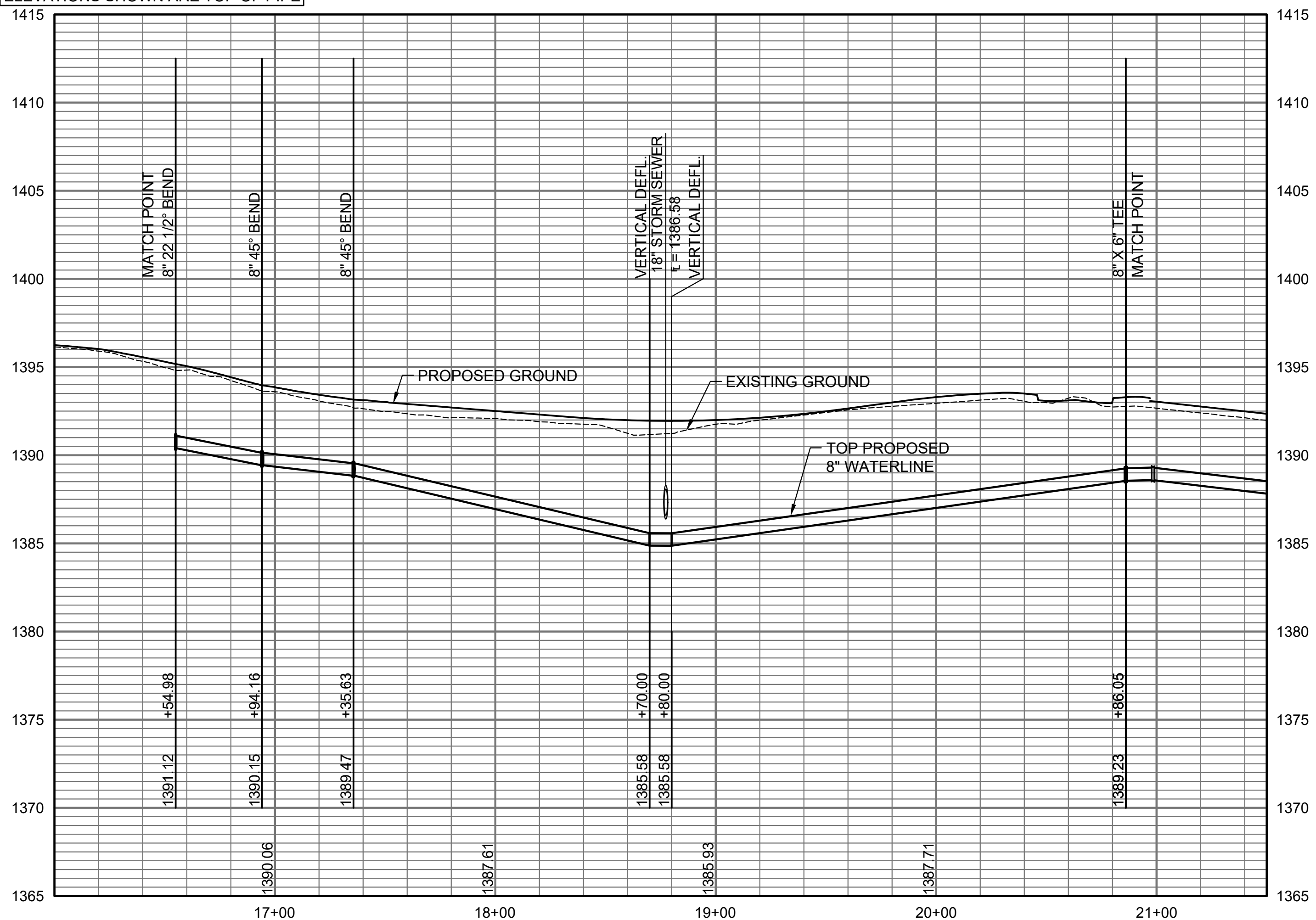
LEGEND

(5000) = SEE SHEET NO. C-003 FOR
 WATERLINE COORDINATES (TYP.)



UNLESS NOTED OTHERWISE,
 ELEVATIONS SHOWN ARE TOP OF PIPE

WL LINE NO. 1



SAVED 9/8/2022 3:54:26 PM BY KURTIS DEKAT
 PLOTTED 9/9/2022 3:58:06 PM BY KURTIS DEKAT
 U:\WICHITA-CIVIL\2021\210524\001\PEC\DRAWINGS\210524-001-CU102.DWG

WATER DISTRIBUTION IMPROVEMENTS
 TO SERVE
 THE VILLAS AT
 OAK CREEK 3RD ADDITION
 GARY JANZEN, P.E. - CITY ENGINEER
 CITY OF WICHITA ENGINEERING PROJECT NO.
 448-2022-021572

JOB NO.	210524-001-0042
DATE	SEPTEMBER 2022
PM	TBK
DESIGNED BY	SNW
DRAWN BY	DMS
CHECKED BY	TBK

WATERLINE NO.1

CU102
 6 OF 18