

1 2 3 4 5 6

A
B
C
D
E

SEE SHEET NOS.
CP251, THRU CP254 FOR
STRUCTURE DETAILS

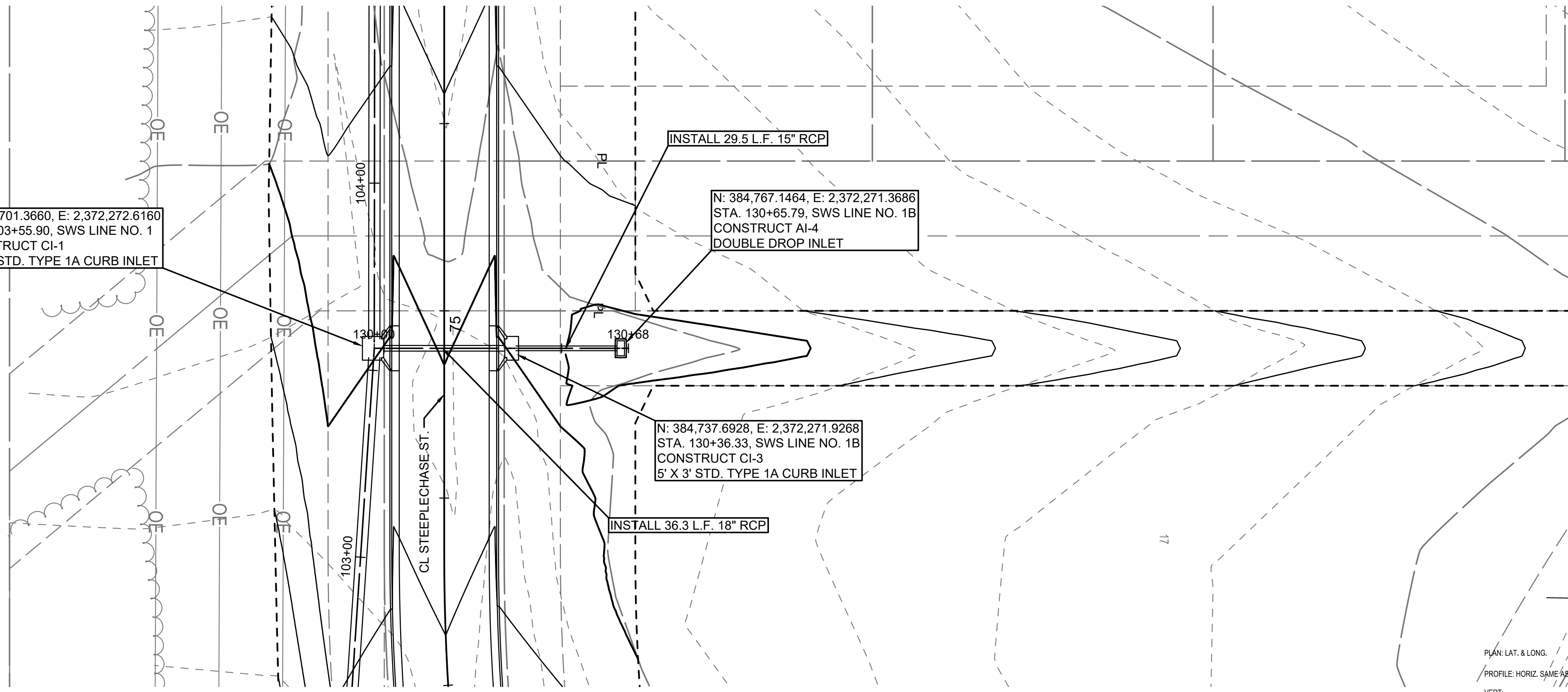
N: 384,701.3660, E: 2,372,272.6160
STA. 103+55.90, SWS LINE NO. 1
CONSTRUCT CI-1
5' X 5' STD. TYPE 1A CURB INLET

INSTALL 29.5 L.F. 15" RCP

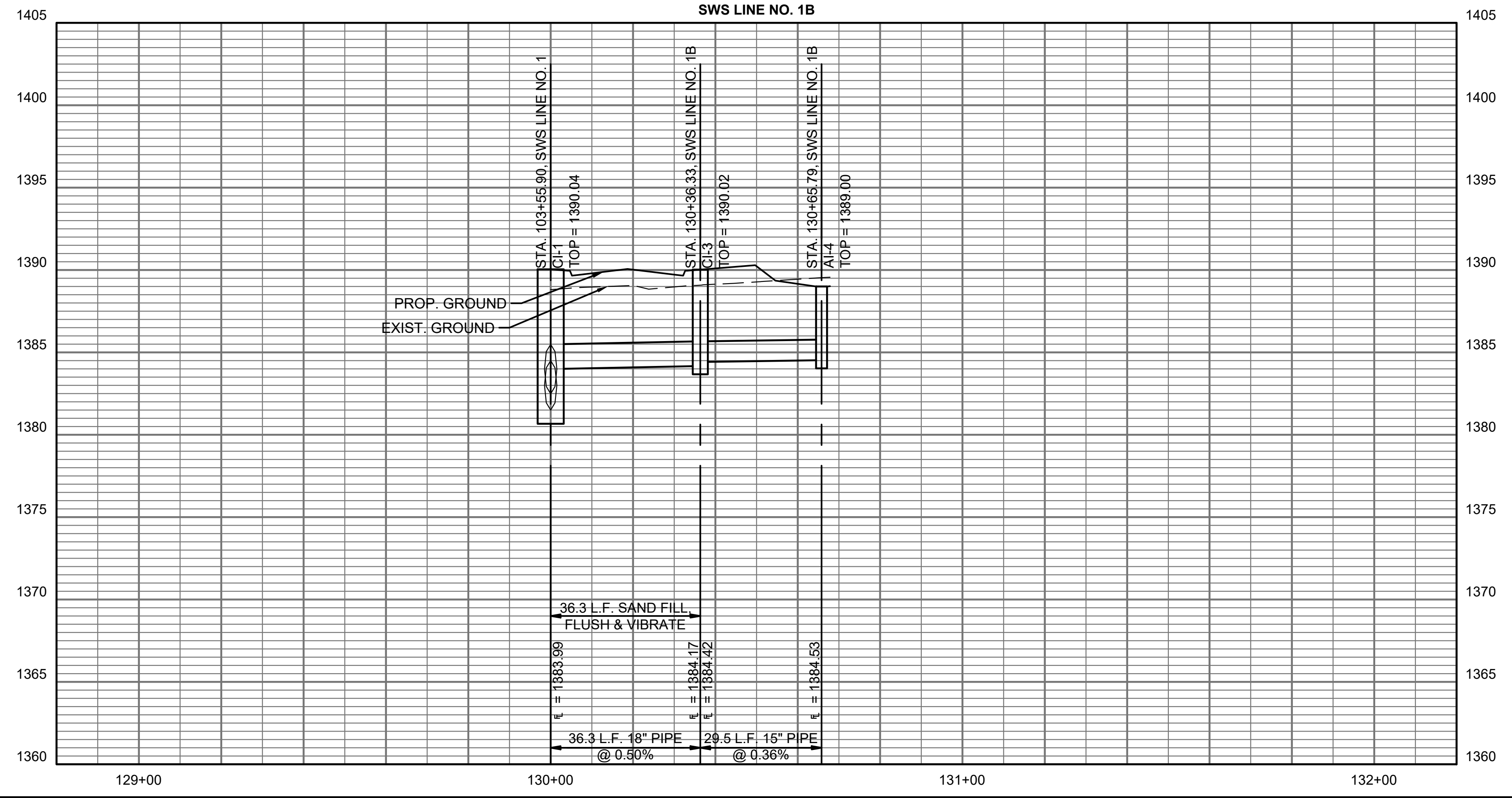
N: 384,767.1464, E: 2,372,271.3686
STA. 130+65.79, SWS LINE NO. 1B
CONSTRUCT AI-4
DOUBLE DROP INLET

N: 384,737.6928, E: 2,372,271.9268
STA. 130+36.33, SWS LINE NO. 1B
CONSTRUCT CI-3
5' X 3' STD. TYPE 1A CURB INLET

INSTALL 36.3 L.F. 18" RCP



SWS LINE NO. 1B



PAVING IMPROVEMENTS
TO SERVE
THE VILLAS AT
OAK CREEK 3RD ADDITION
GARY JANZEN, P.E. - CITY ENGINEER
CITY OF WICHITA ENGINEERING PROJECT NO. 472-2022-085795

JOB NO.	210524-000
DATE	SEPTEMBER 2022
PM	TPA
DESIGNED BY	AKL, LGP
DRAWN BY	CP
CHECKED BY	RJS

SWS LINE NO. 1B PLAN & PROFILE

CP207
32 OF 53

SAVED 6/23/2022 11:54:48 AM BY LUKE.PETER
PLOTTED 9/8/2022 4:14:34 PM BY LUKE.PETER
U:\WICHITA-CIVIL\2021\210524\000\PEC\DRAWINGS\210524-000-CP207.DWG