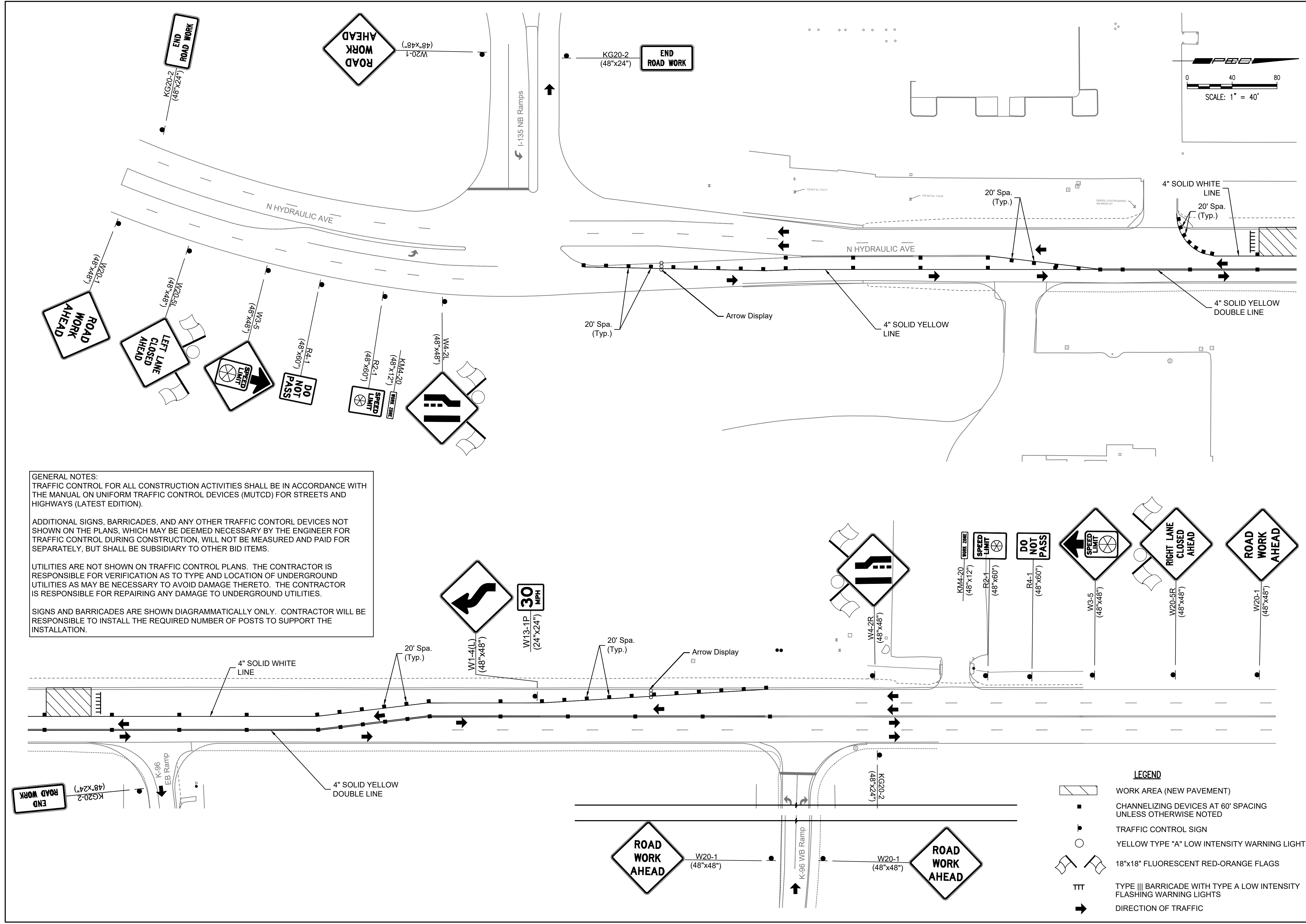


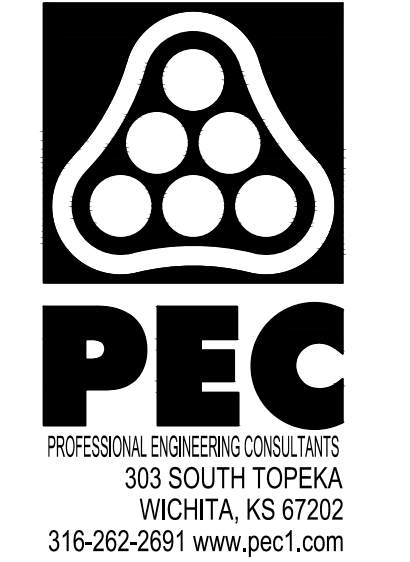
SAVED 9/13/2022 2:29:32 PM BY CARLOS PEREZ  
 PLOTTED 9/13/2022 3:06:43 PM BY KURTIS DEKAT  
 U:\WICHITA-CIVIL\2021\12-10253\000\MUNI-TRANS\DRAWINGS\10253-000-CT106.DWG



**GENERAL NOTES:**  
 TRAFFIC CONTROL FOR ALL CONSTRUCTION ACTIVITIES SHALL BE IN ACCORDANCE WITH THE MANUAL ON UNIFORM TRAFFIC CONTROL DEVICES (MUTCD) FOR STREETS AND HIGHWAYS (LATEST EDITION).  
 ADDITIONAL SIGNS, BARRICADES, AND ANY OTHER TRAFFIC CONTROL DEVICES NOT SHOWN ON THE PLANS, WHICH MAY BE DEEMED NECESSARY BY THE ENGINEER FOR TRAFFIC CONTROL DURING CONSTRUCTION, WILL NOT BE MEASURED AND PAID FOR SEPARATELY, BUT SHALL BE SUBSIDIARY TO OTHER BID ITEMS.  
 UTILITIES ARE NOT SHOWN ON TRAFFIC CONTROL PLANS. THE CONTRACTOR IS RESPONSIBLE FOR VERIFICATION AS TO TYPE AND LOCATION OF UNDERGROUND UTILITIES AS MAY BE NECESSARY TO AVOID DAMAGE THERETO. THE CONTRACTOR IS RESPONSIBLE FOR REPAIRING ANY DAMAGE TO UNDERGROUND UTILITIES.  
 SIGNS AND BARRICADES ARE SHOWN DIAGRAMMATICALLY ONLY. CONTRACTOR WILL BE RESPONSIBLE TO INSTALL THE REQUIRED NUMBER OF POSTS TO SUPPORT THE INSTALLATION.

**LEGEND**

- WORK AREA (NEW PAVEMENT)
- CHANNELIZING DEVICES AT 60' SPACING UNLESS OTHERWISE NOTED
- TRAFFIC CONTROL SIGN
- YELLOW TYPE "A" LOW INTENSITY WARNING LIGHT
- 18"x18" FLUORESCENT RED-ORANGE FLAGS
- TYPE III BARRICADE WITH TYPE A LOW INTENSITY FLASHING WARNING LIGHTS
- DIRECTION OF TRAFFIC



**SANITARY SEWER AND WATERLINE IMPROVEMENTS TO SERVE NORTH JUNCTION UTILITY RELOCATION**  
 GARY JANZEN, P.E. - CITY ENGINEER  
 SS: CITY OF WICHITA PROJ. NO. 468-2021-002929  
 WL: CITY OF WICHITA PROJ. NO. 448-2021-034139

Issue:			
JOB NO.	35-210253-000-0042		
DATE	01 JUNE 2021		
PM	TBK		
DESIGNED BY	SAC		
DRAWN BY	CP		
CHECKED BY	SAC		

HYDRAULIC AVE TRAFFIC CONTROL PLAN  
**CT104**