

**BENCHMARKS:**

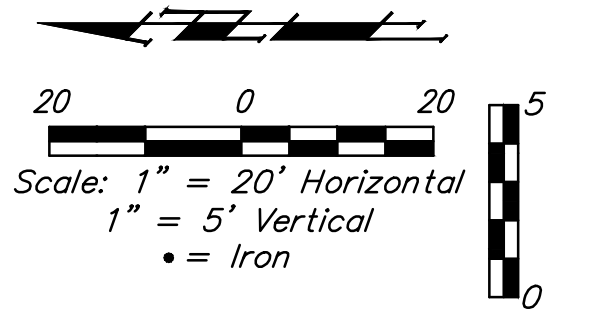
BM #1: "X" chiseled on top of concrete, approx 113.0' north & 321.6' east of the northeast property corner, Auburn Hills Commercial 2nd Addition, Wichita, Sedgwick County, Kansas. Elevation = 1339.69 (NAVD 88)

BM #2: "X" chiseled on top of concrete, approx 111.7' north & 116.0' west of the northwest property corner, Auburn Hills Commercial 2nd Addition, Wichita, Sedgwick County, Kansas. Elevation = 1352.15 (NAVD 88)

Pipe layout is shown with horizontal and vertical deflections. Contractor to use short pipe lengths, high deflection couplers, and manufacturer recommended pipe deflections to meet planned alignment.

Contractor to maintain a minimum of 10' of horizontal separation (O.D.-O.D.) between sanitary sewer and water line.

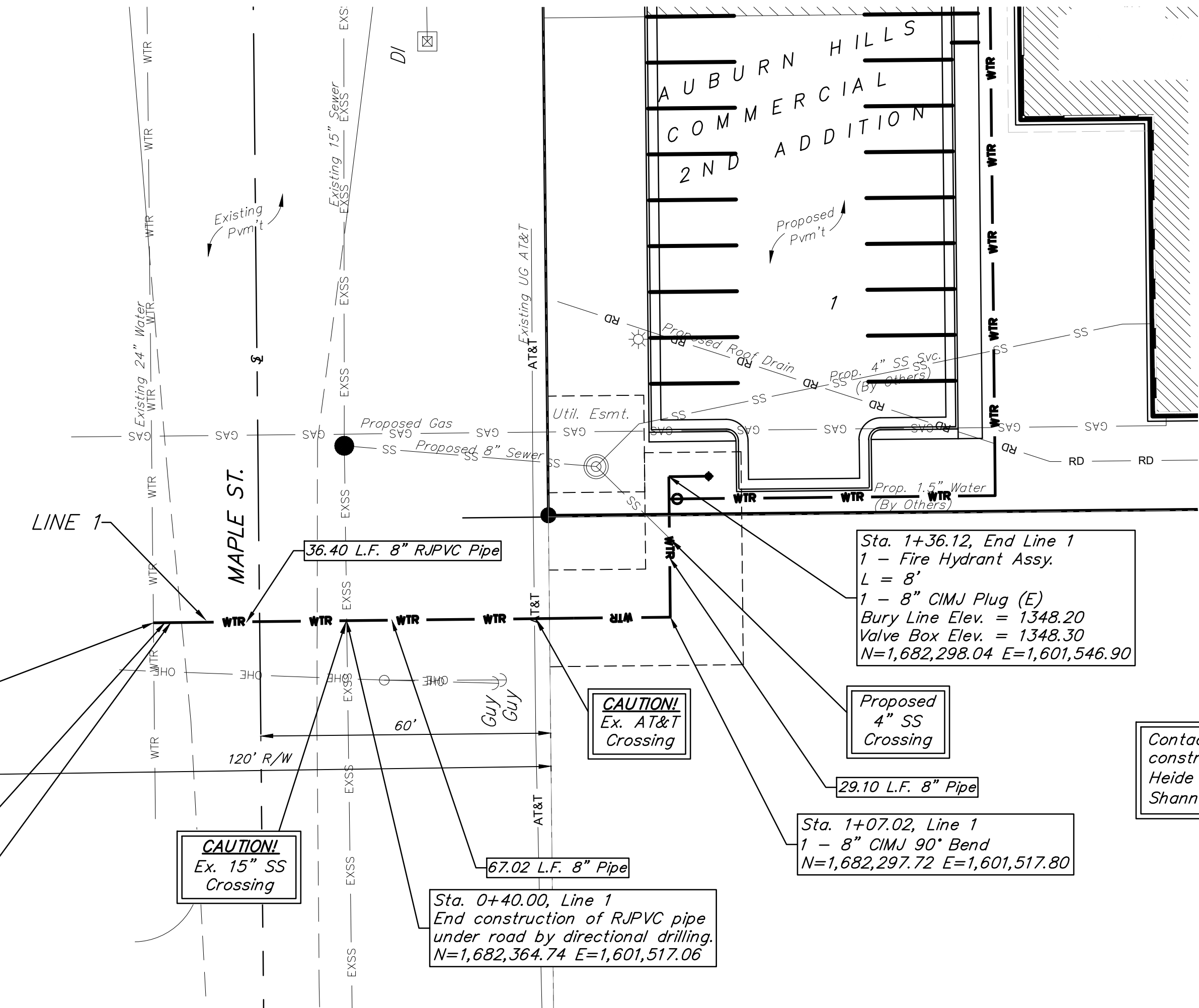
Contractor to maintain a minimum of 2' of vertical separation (O.D.-O.D.) between sanitary sewer and water line.



Sta. 0+00.00, Begin Line 1  
1 - 24"x8" Tapping Saddle  
1 - 8" Tapping Valve & Valve Box  
Tapping saddle, tapping valve & valve box to be furnished and installed by the City of Wichita Water Dept. Contractor to set valve box to grade.  
1 - 8" CIMJ 22.5° Bend (V)  
Valve Box Elev. = 1348.80  
N=1,682,404.73 E=1,601,516.62

Sta. 0+03.60, Line 1  
Begin construction of RJPVC pipe under road by directional drilling.  
1 - 8" RJ CIMJ 22.5° Bend (V)  
N=1,682,401.13 E=1,601,516.66

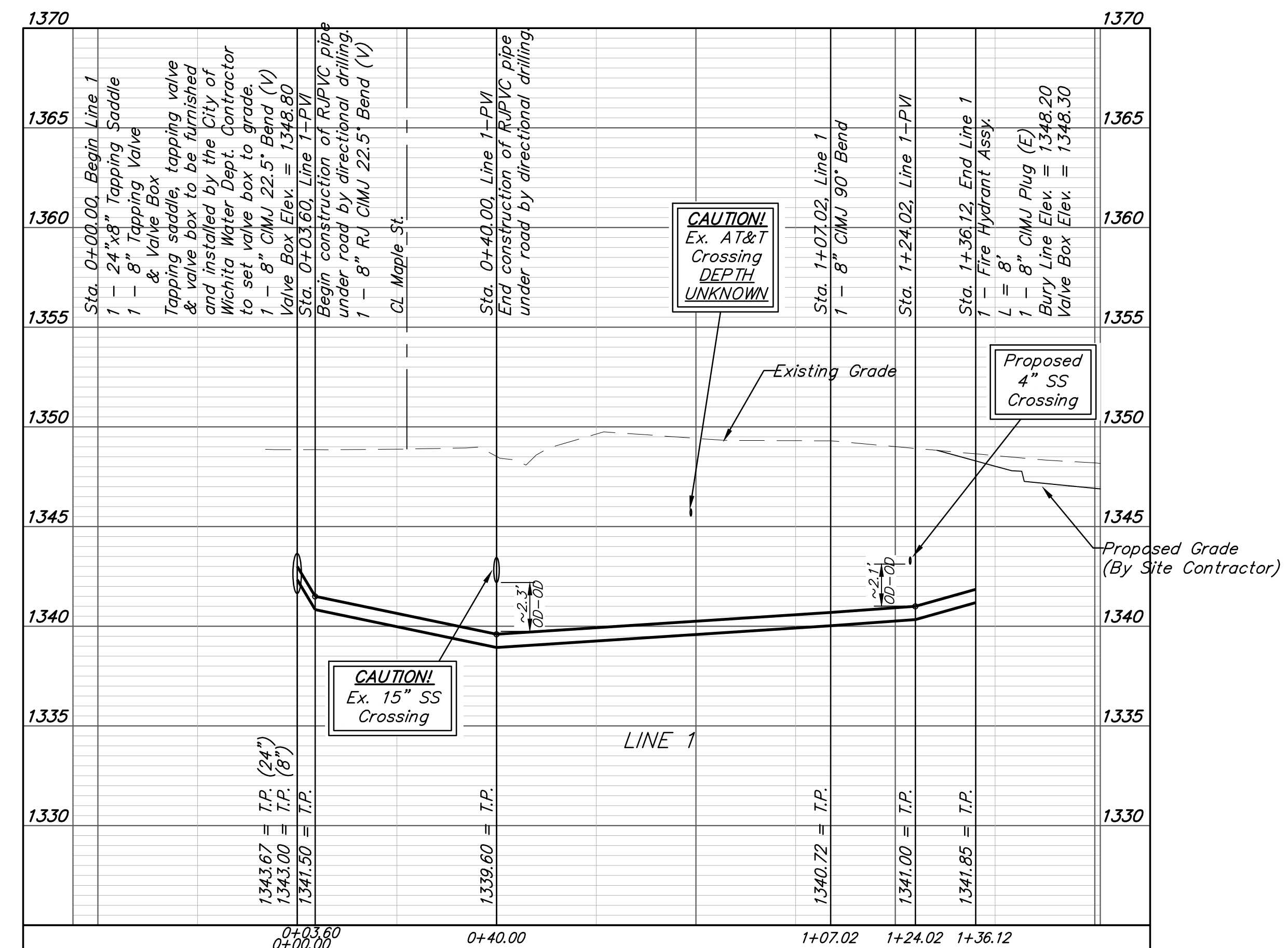
3.60 L.F. 8" DI CL Pipe



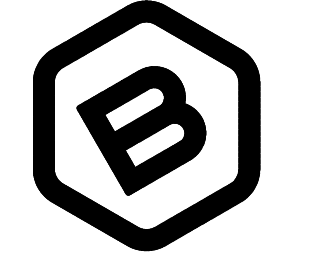
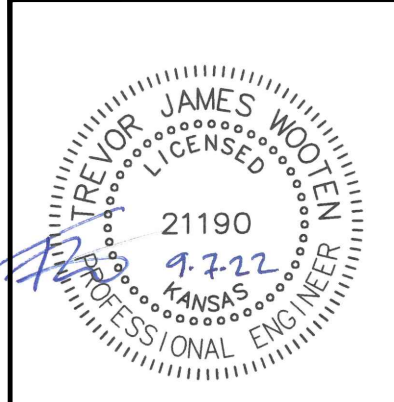
**CAUTION!**  
Ex. AT&T Crossing

**CAUTION!**  
Ex. 15" SS Crossing

Contact utility companies 3 weeks prior to construction to coordinate construction.  
Heide Bryan, Evergy, (316) 261-6354  
Shannon Brinkmeyer, AT&T (316) 268-2931



**DEPTH UNKNOWN**  
Contractor to Verify Depth & Location of Existing Water Line Prior to Construction.



**BAUGHMAN COMPANY**  
315 Ellis St.  
Wichita, KS 67211  
316-262-7271  
BaughmanCo.com

AUBURN FAMILY DENTAL

**LINE 1**

WATER DISTRIBUTION SYSTEM

PROJECT NUMBER:  
22-01-E111

DESIGN: TJW DRAWN: TMS

DATE: September 7, 2022

SHEET OF  
**2 12**