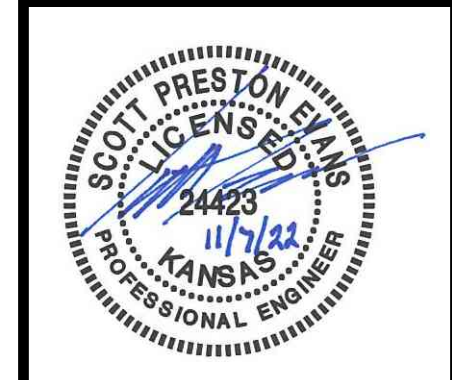


J:\PROJECTS\2022\01\10708_MPH_119TH\HAND37TH\DEVELOPMENT\SERVICES\00_02788_CADD\SH1505_CIVIL\WTRPH11207094-05-2023.DWG
 PLOTTED: Monday, November 07, 2022 @ 10:23AM



WATER DISTRIBUTION PLANS FOR
ARVADA ADDITION
 PHASE 1

©2022
 MKEC Engineering
 All Rights Reserved
 www.mkec.com
 These drawings and their contents, including, but not limited to, all concepts, designs, & ideas are the exclusive property of MKEC Engineering (MKEC), and may not be used or reproduced in any way without the express consent of MKEC.

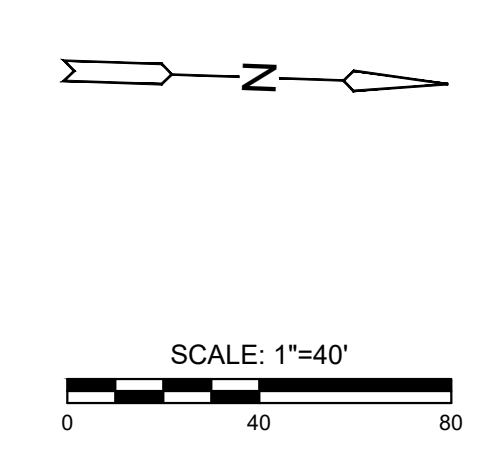
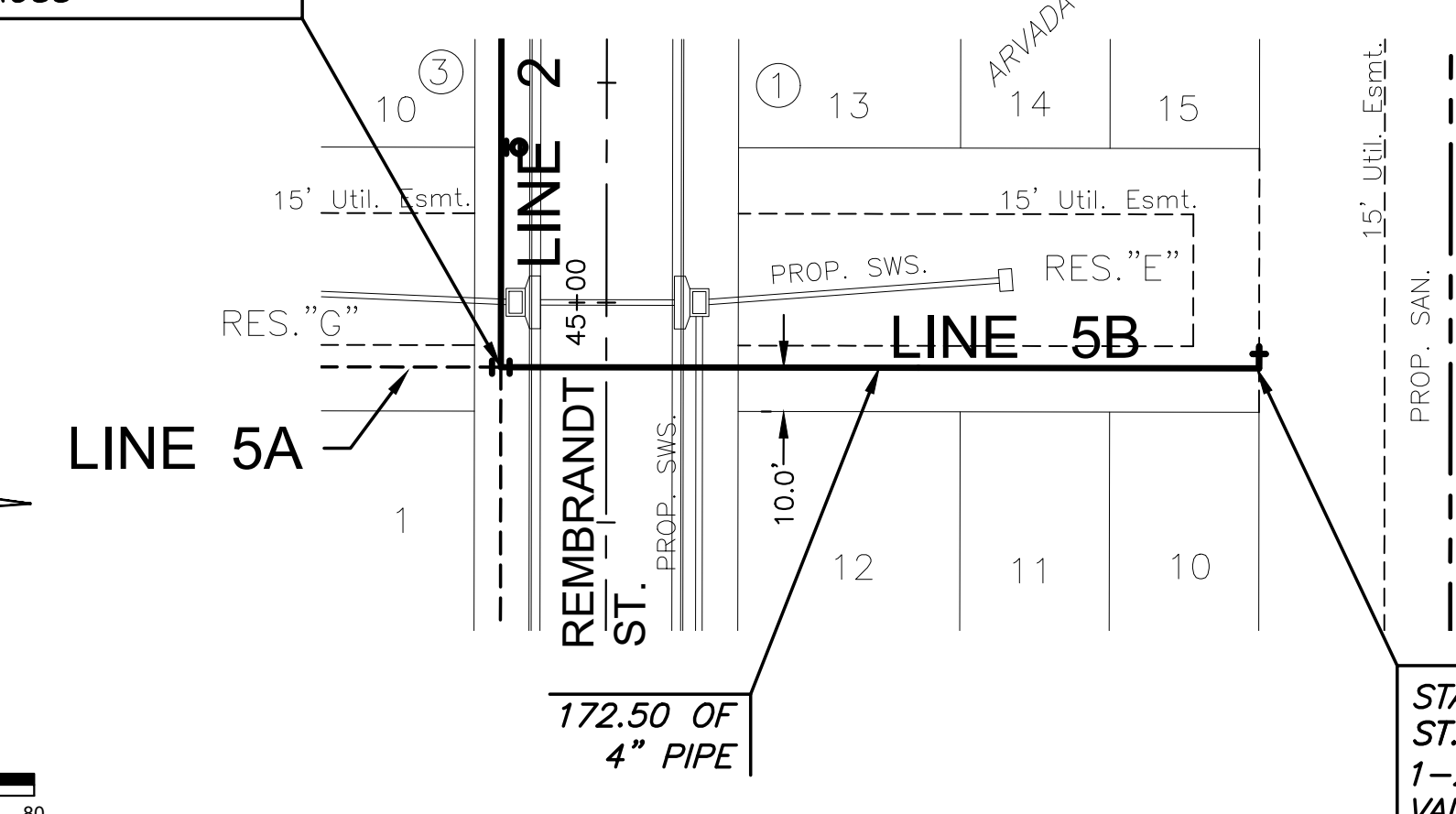
WTR LINE 5B & 6

PROJECT NO.	448-2022-024786	
DATE	NOV 2022	
SCALE	1"=40'	
DESIGNED	DRAWN	CHECKED
SPE	LM	SPE

NO.	REVISION	DATE

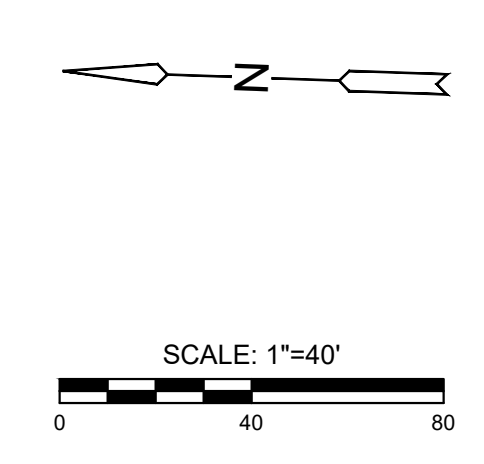
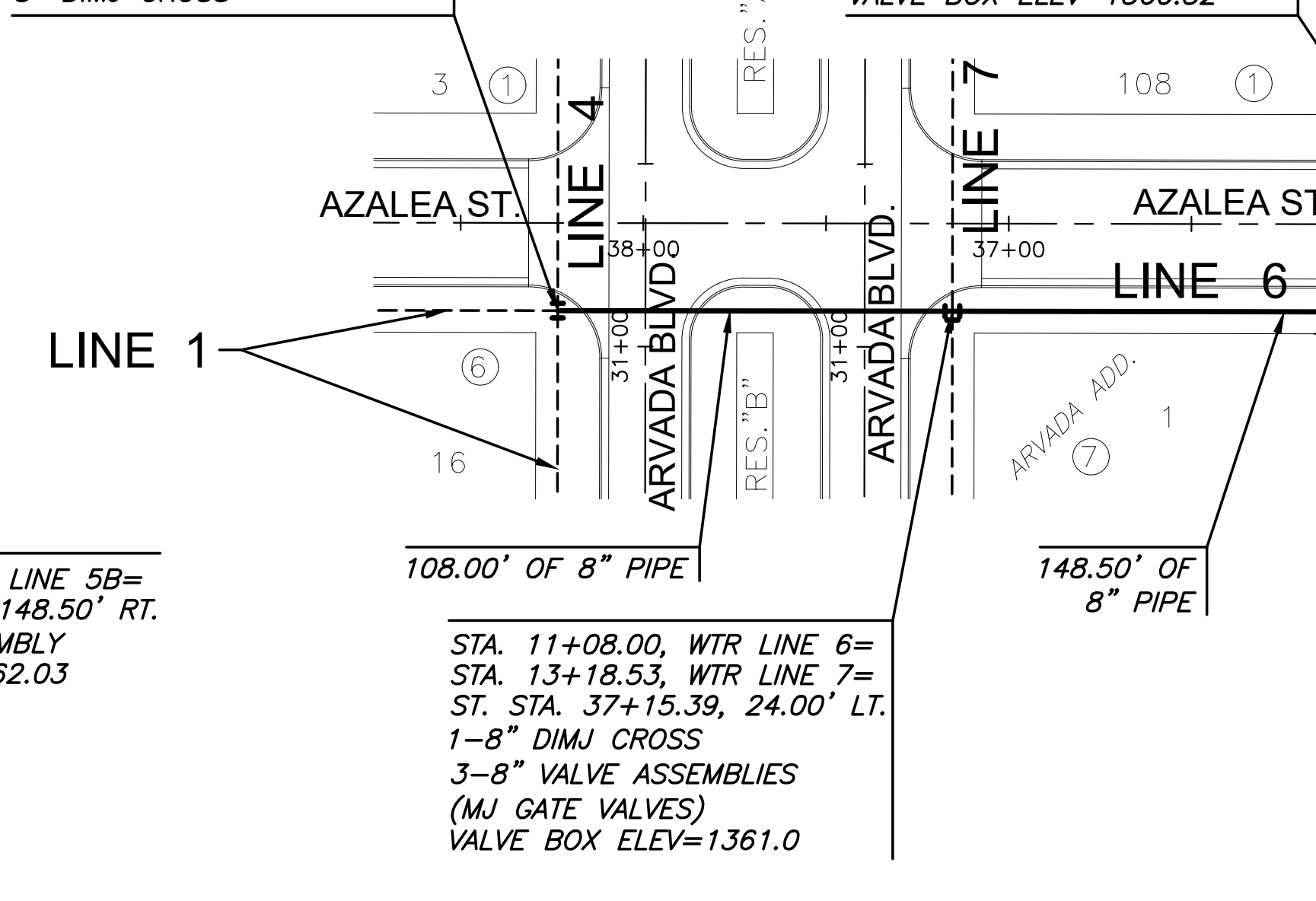
SHEET NO. 08 OF 17

STA. 10+00.00, WTR LINE 5B=
 STA. 12+49.56, WTR LINE 2=
 STA. 10+00.00, WTR LINE 5A=
 ST. STA. 44+85.28, 24.00' LT.
 8"x4" DIMJ CROSS

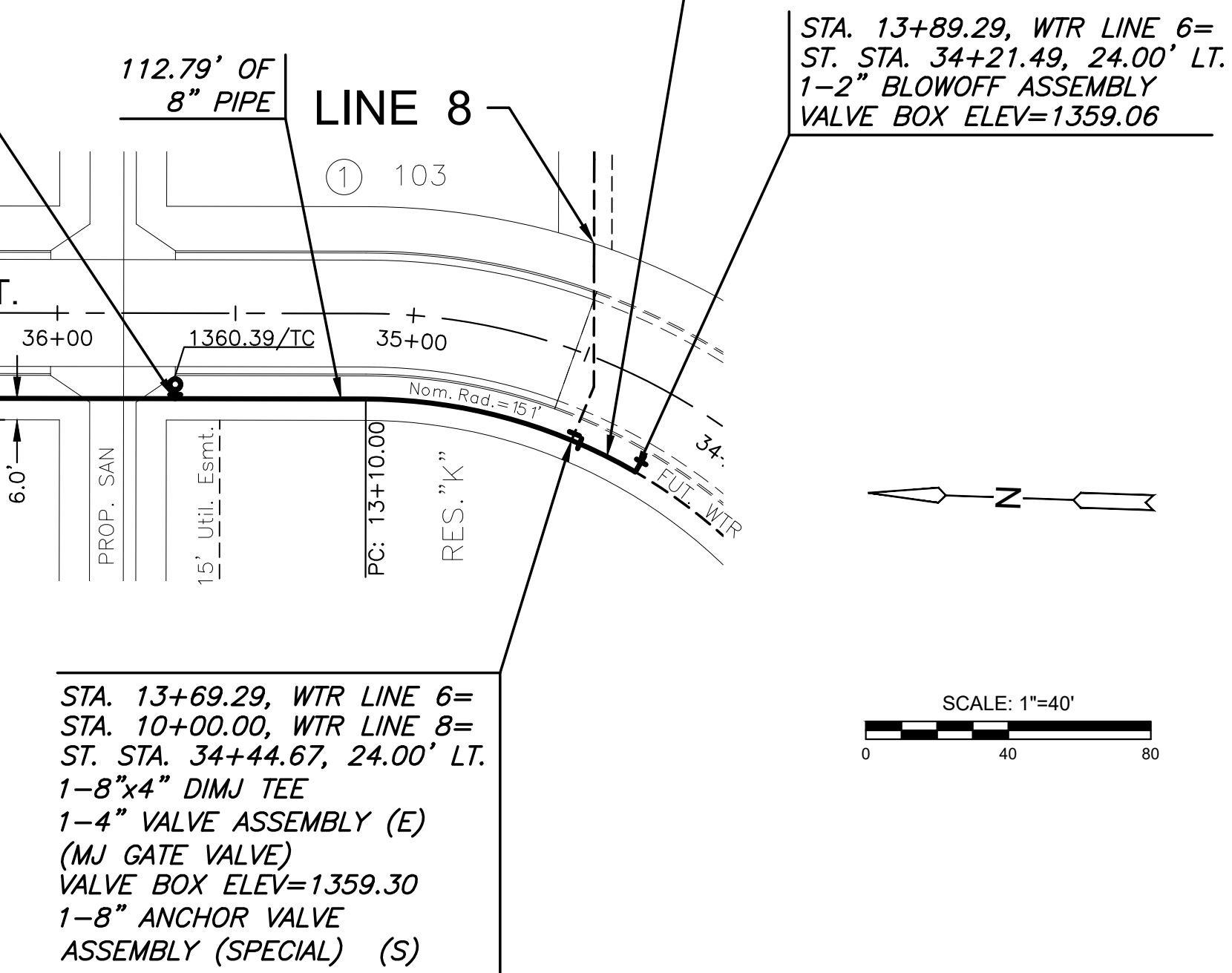


NOTE:
 CONTRACTOR TO VERIFY LOCATION
 AND ELEVATION OF EXISTING WATER
 LINE PRIOR TO CONSTRUCTION.

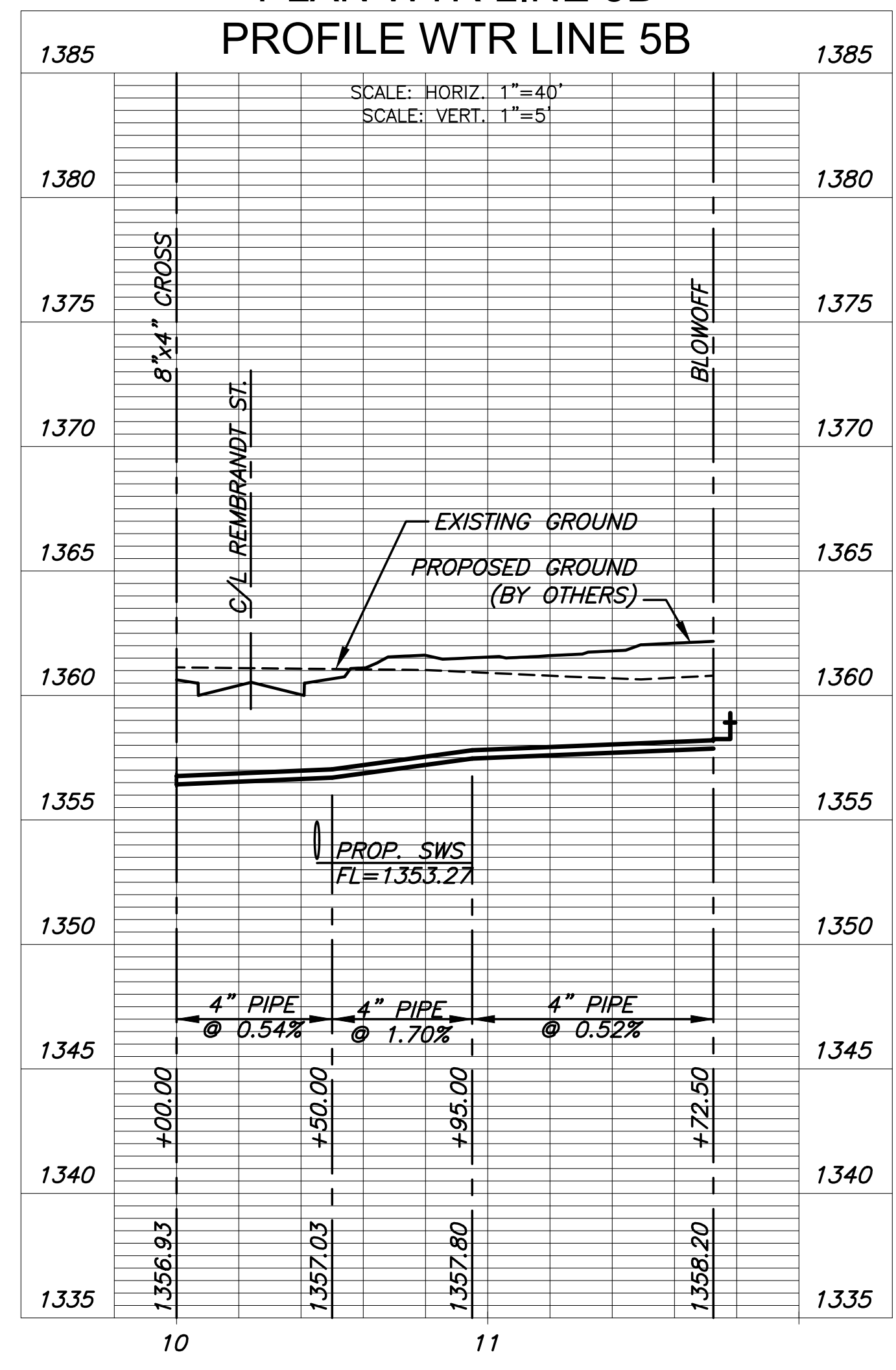
STA. 10+00.00, WTR LINE 6=
 STA. 20+08.18, WTR LINE 1=
 STA. 10+00.00, WTR LINE 4=
 ST. STA. 38+23.39, 24.00' LT.
 8" DIMJ CROSS



STA. 12+56.50, WTR LINE 6=
 ST. STA. 35+66.89, 24.00' LT.
 1-FIRE HYDRANT ASSEMBLY
 L=4.0'
 VALVE BOX ELEV=1360.52



PLAN WTR LINE 5B
PROFILE WTR LINE 5B



PLAN WTR LINE 6
PROFILE WTR LINE 6

