

STATE	PROJECT NO.	YEAR	SHEET NO.	TOTAL SHEETS
KANSAS	448-2021-039949	2022	II	14

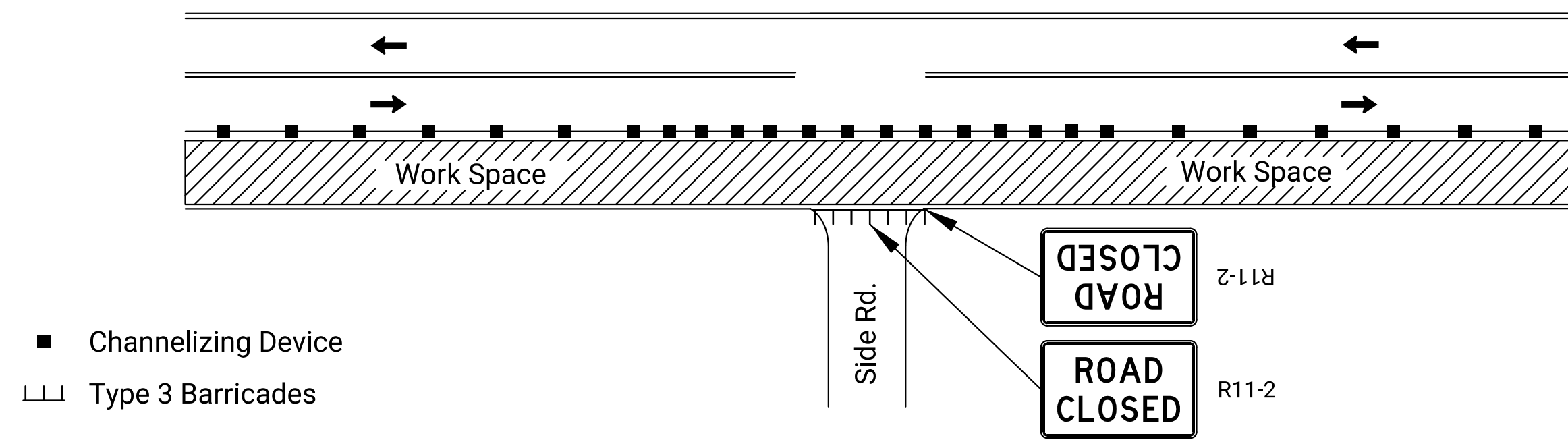
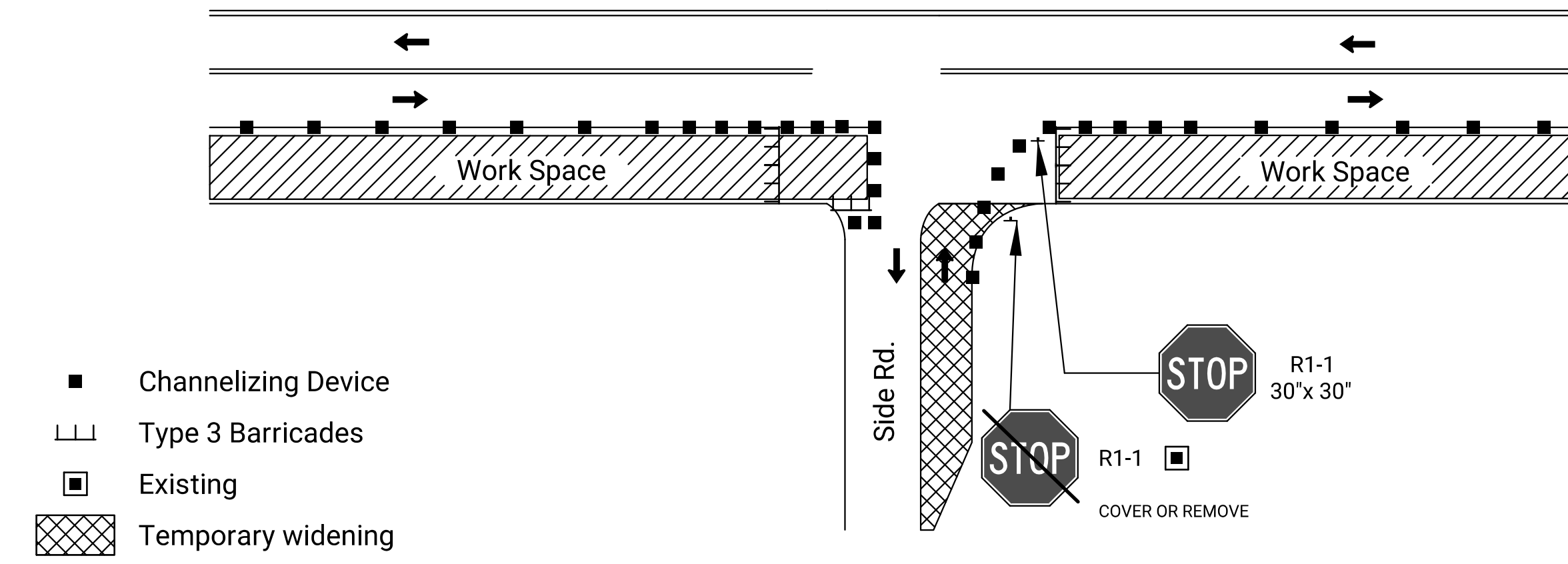


FIGURE 1: SIDE ROAD OR ENTRANCE CLOSED THROUGH WORK AREA



**FIGURE 4: SIDE ROAD OR ENTRANCE CONSTRUCTED HALF AT A TIME:
TWO WAY TRAFFIC REQUIRED**

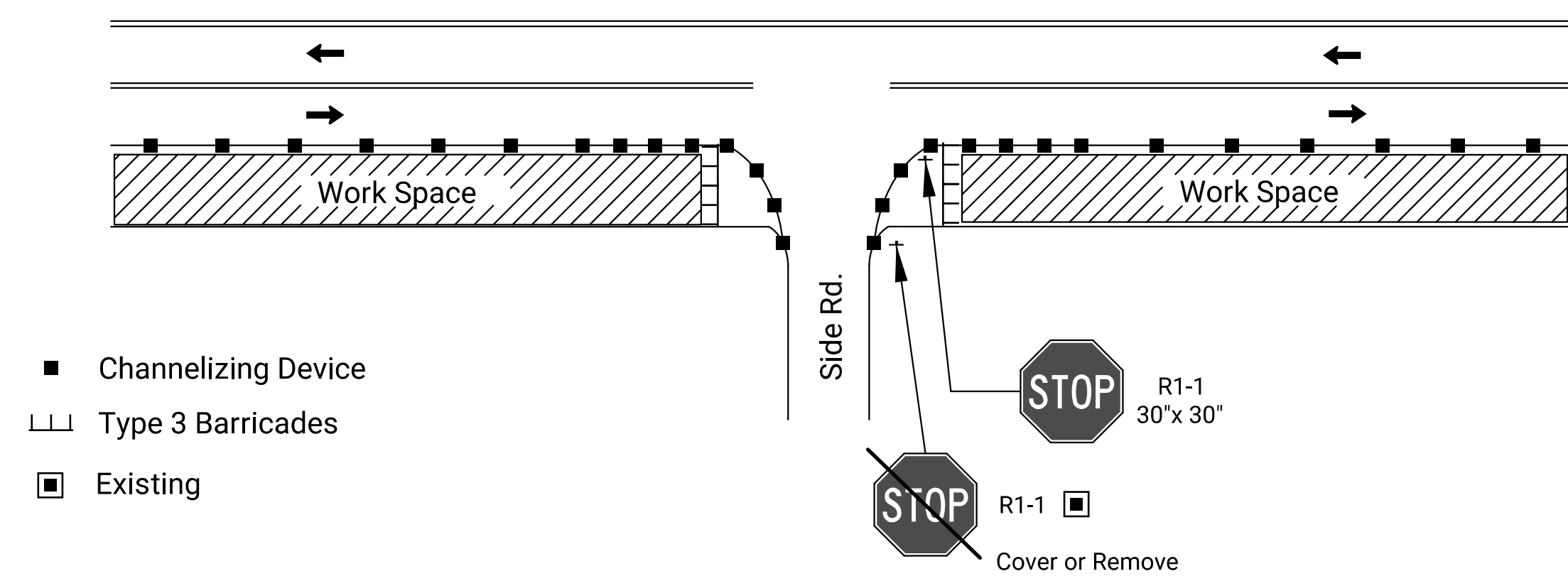


FIGURE 2: SIDE ROAD OR ENTRANCE OPEN THROUGH WORK AREA

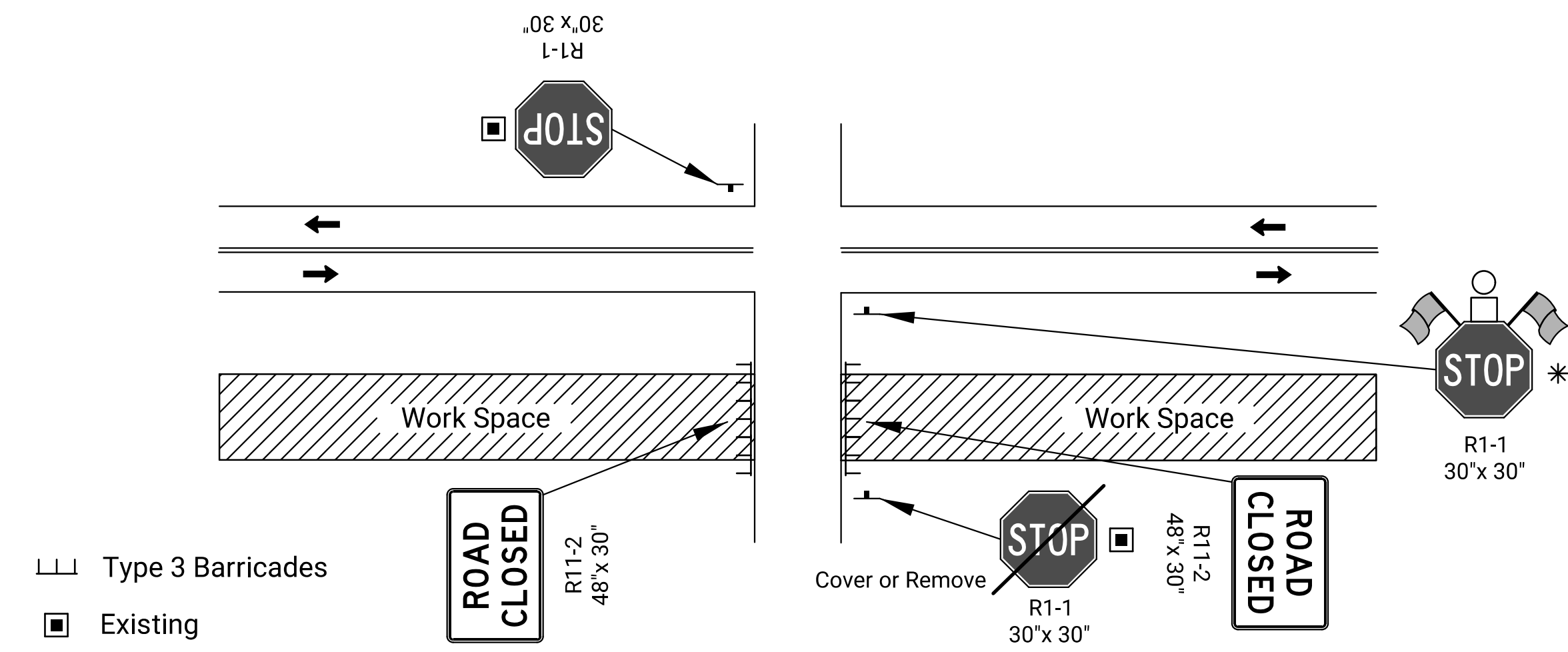


FIGURE 5: SIDE ROAD OPEN THROUGH WORK AREA ON DIVIDED ROADWAY

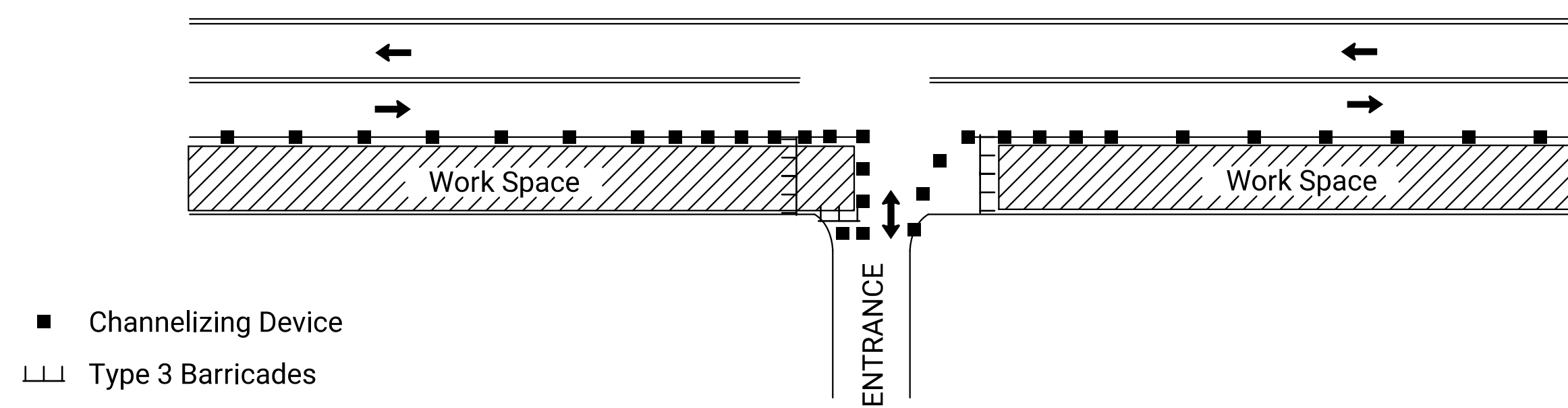


FIGURE 3: LOW VOLUME ENTRANCE CONSTRUCTED HALF AT A TIME

Note: Consider large vehicles making right turns into and out of entrance and use figure 4 as needed

Drawn By : Road
Plotted : 12/2/2022
File : c:\transystems\pw_local\transyscorp\pw1\danavarro\d1166435\TE705.dgn

NO.	DATE	REVISIONS	BY	APPD
KANSAS DEPARTMENT OF TRANSPORTATION				
TRAFFIC CONTROL ACCESS THROUGH THE WORK AREA				
TE705				
FHWA APPROVAL	06-01-15	APPD.	Kristina Erickson	
DESIGNED	R.W.B.	DETAILED	R.W.B.	QUANTITIES
DESIGN CK.	DETAIL CK.	QUAN. CK.	TRACED	TRACE CK.