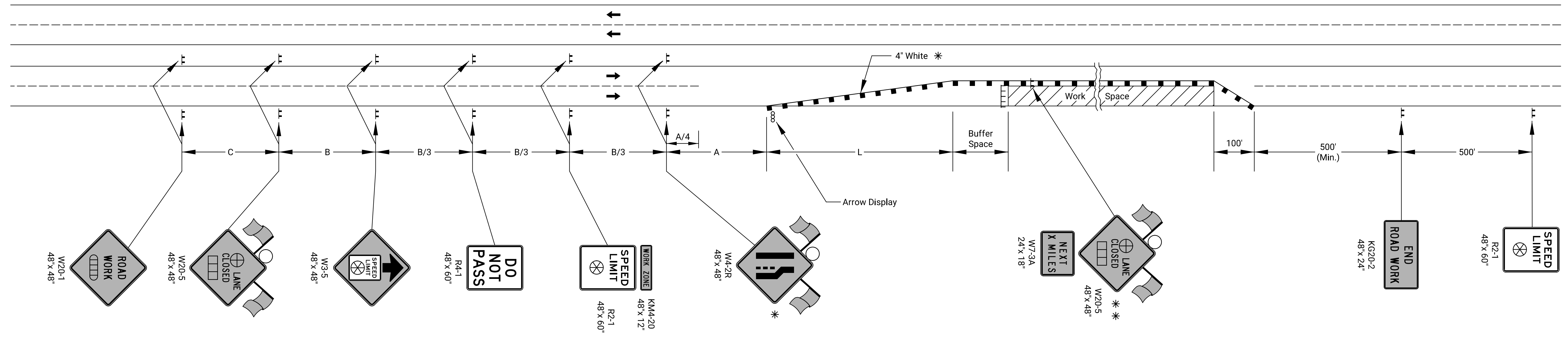
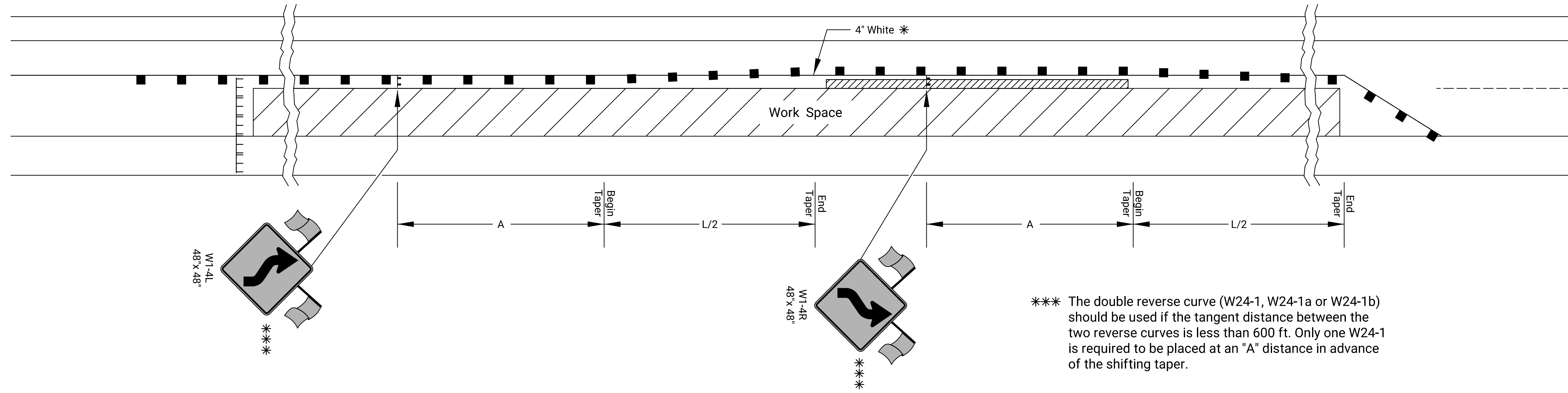


STATE	PROJECT NO.	YEAR	SHEET NO.	TOTAL SHEETS
KANSAS	448-2021-039949	2022	I4	I4

SHIFTING TAPER DETAIL

Add signs and devices as shown for work inside a closed lane that extends near to (or into) the open traffic lane.



- ▬▬▬ Type 3 Barricades
- × Length to the Nearest Whole Mile
- Channelizing Device
- ▭▭▭ Ahead, 1500 ft, or 1 mile
- ▭▭▭ Ahead, 1000 ft, 1500 ft, or 1/2 mile
- ⊕ Right or Left
- ⊗ Speed to be determined by the Engineer
- Type "A" Low Intensity Warning Light

- * For left lane closures use W4-2L and yellow edge line along channelizing devices.
- * * The W20-5 (⊕ Lane Closed) and W7-3A (Next X Miles) signs should be placed at 2 mile increments on a project of 4 miles or longer.

Left-side signs shall be omitted for a four-lane undivided highway.

One flagger should be stationed within each multi-lane roadway activity area where work is in a closed lane adjacent to traffic and not separated by a concrete safety barrier system.

Drawn By : Road
 Plotted : 12/2/2022
 File : c:\transystems\pw_local\transyscorp\pw1\danavarr\1166435\TE744.dgn

KANSAS DEPARTMENT OF TRANSPORTATION				
TRAFFIC CONTROL LANE CLOSURE ON MULTILANE HWY				
TE744				
NO.	DATE	REVISIONS	BY	APPD
01	03-13-18	W24-1 usage changed to Should	R.W.B.	E.G.K.
DESIGNED		B.A.H.	DETAILED	R.W.B.
DESIGN CK.		DETAIL CK.	QUANTITIES	QUAN.CK.
APPD.		TRACED		Eric Koehler
APPD.		TRACE CK.		