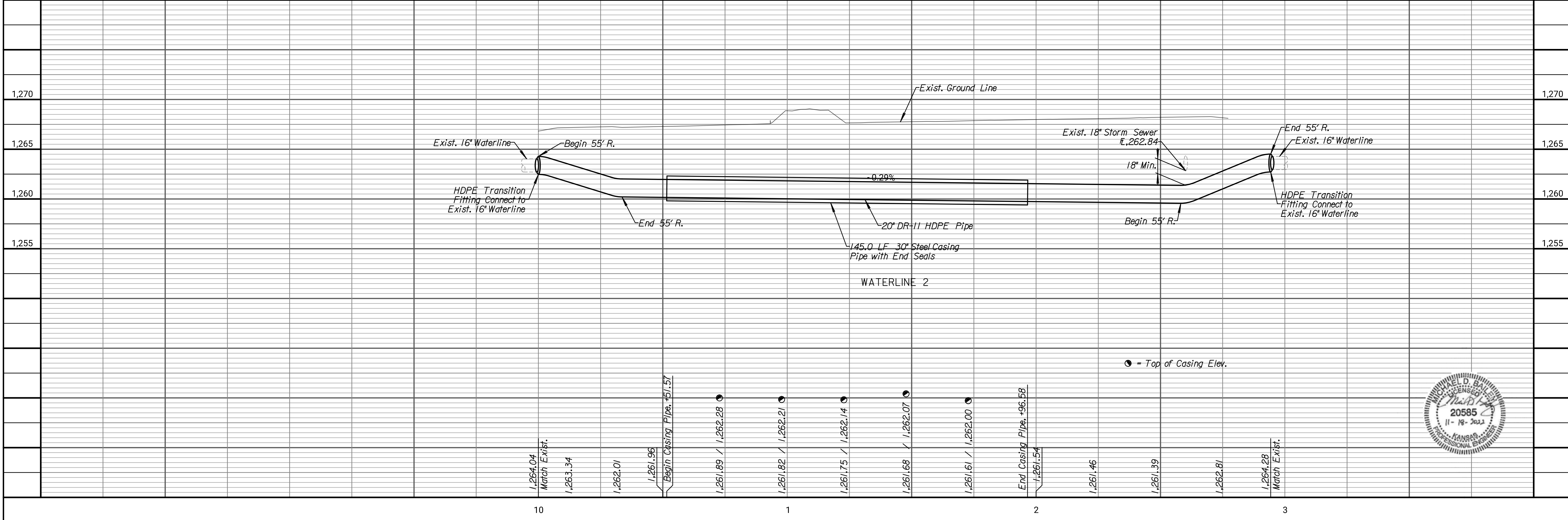


- Sta. 0+10.44 Waterline 2 to Sta. 10+56.57, Waterline 2  
Const. 6.3' x 55.67' Full Depth Patch  
Const. 28.2 LF Curb & Gutter
- Sta. 10+00.00, Waterline 2  
Remove 20.00 LF Exist. 16" Waterline (N)  
Connect to Exist. 16" Waterline (S)  
Install 1 - 16" DICL to 20" HDPE Adapter  
Install 294.29 LF 20" HDPE  
Begin 55.0' Radius  
Install 1 - 16" MJ Cap (N)  
Abandon Exist 16" Pipe in Place (N)  
N 1,655,848.7005  
E 1,655,569.4156
- Sta. 10+14.23, Waterline 2  
Begin 56.0' Radius  
N 1,655,862.4162  
E 1,655,566.1358
- Sta. 10+33.58, Waterline 2  
End 55.0' Radius  
N 1,655,881.4244  
E 1,655,562.5656
- Sta. 10+51.57, Waterline 2  
Begin 145.00 LF of 30" Steel Casing Pipe (Directional Drilled) with End Seals  
N 1,655,897.5085  
E 1,655,562.3937
- Sta. 11+96.57, Waterline 2  
End 145.00 LF of 30" Steel Casing Pipe (Directional Drilled) with End Seals  
N 1,656,042.5002  
E 1,655,560.8443
- Sta. 12+58.17, Waterline 2  
Begin 55.0' Radius  
N 1,656,105.9959  
E 1,655,560.1658
- Sta. 12+76.23, Waterline 2  
Begin 55.0' Radius  
N 1,656,123.7655  
E 1,655,562.9154
- Sta. 12+94.29, Waterline 2  
Remove 20.00 LF Exist. 16" Pipe (S)  
End 55.0' Radius  
Install 1 - 16" DICL to 20" HDPE Adapter  
Connect to Exist. 16" Waterline (N)  
Install 1 - 16" MJ Cap (S)  
N 1,656,141.5352  
E 1,655,565.6649



**Tran Systems**  
245 NORTH WACO  
SUITE 222  
WICHITA, KANSAS 67202  
PHONE: 316-303-3000  
FAX: 316-303-0166

CONSULTANTS:

WATERLINE IMPROVEMENTS  
E. 56TH STREET S. &  
S. HYDRAULIC AVENUE  
WICHITA, KANSAS  
**CITY OF WICHITA**

REVISIONS:	MARK	DATE	DESCRIPTION

PROJ NO: 448-2021-039949  
SCALE: 1"=20'  
DATE: 12/2/2022  
DESIGNED BY: MDB  
DRAWN BY: DAN  
CHECKED BY: MDB

SHEET TITLE:  
**WATERLINE 2  
S. HYDRAULIC AVE.**

SHEET NO.  
**4**

SHEET 4 OF 14

danawano 12/2/2022 11:02:18 AM c:\tran\systems\proj\448\2021\039949\166435C-WTR-M02-10.dgn

IF THIS DRAWING IS LESS THAN 22" X 36" IT IS A REDUCED SIZE DRAWING