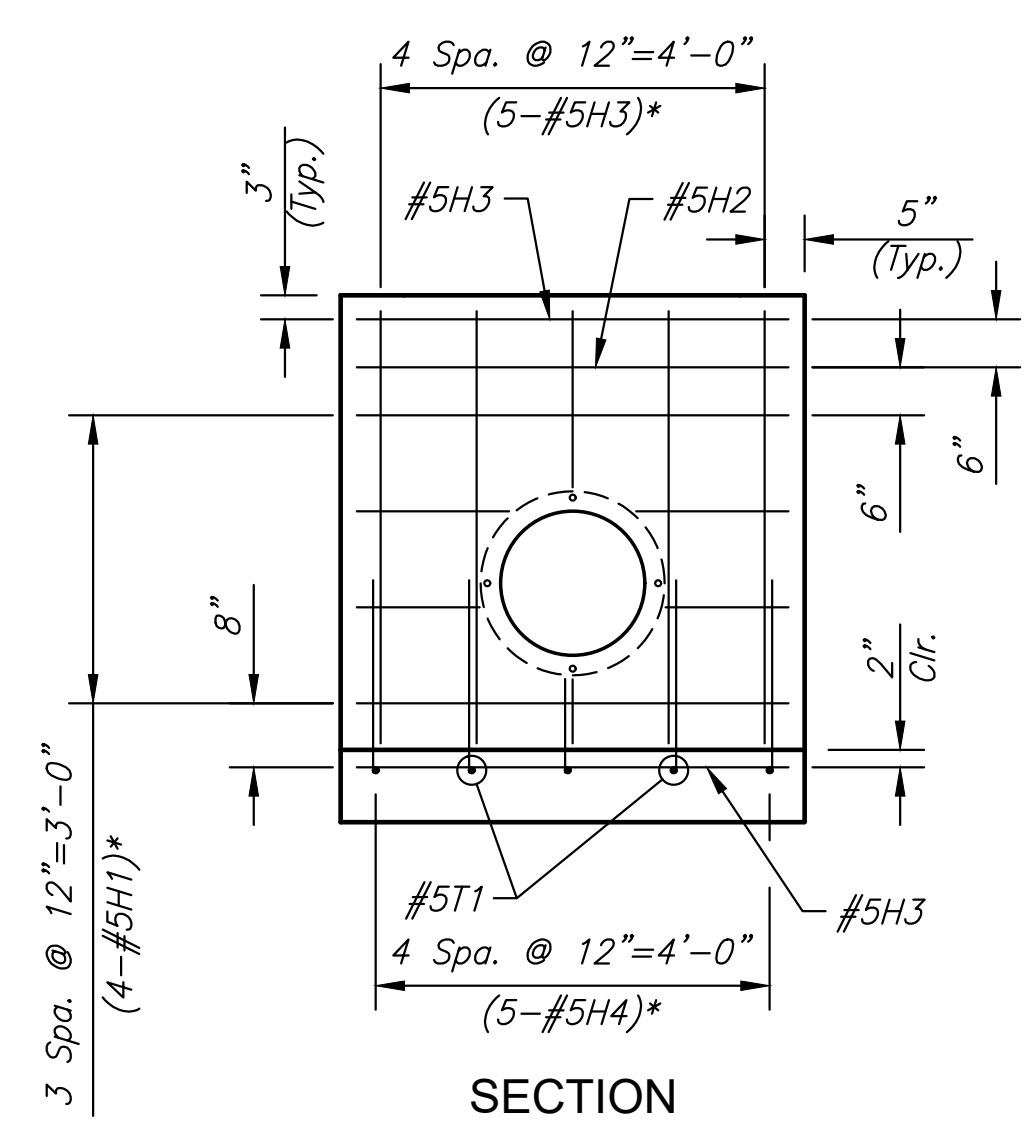


STATE	PROJECT NO.	YEAR	SHEET NO.	TOTAL SHEETS
KANSAS	472-2021-085733	2022	36	92

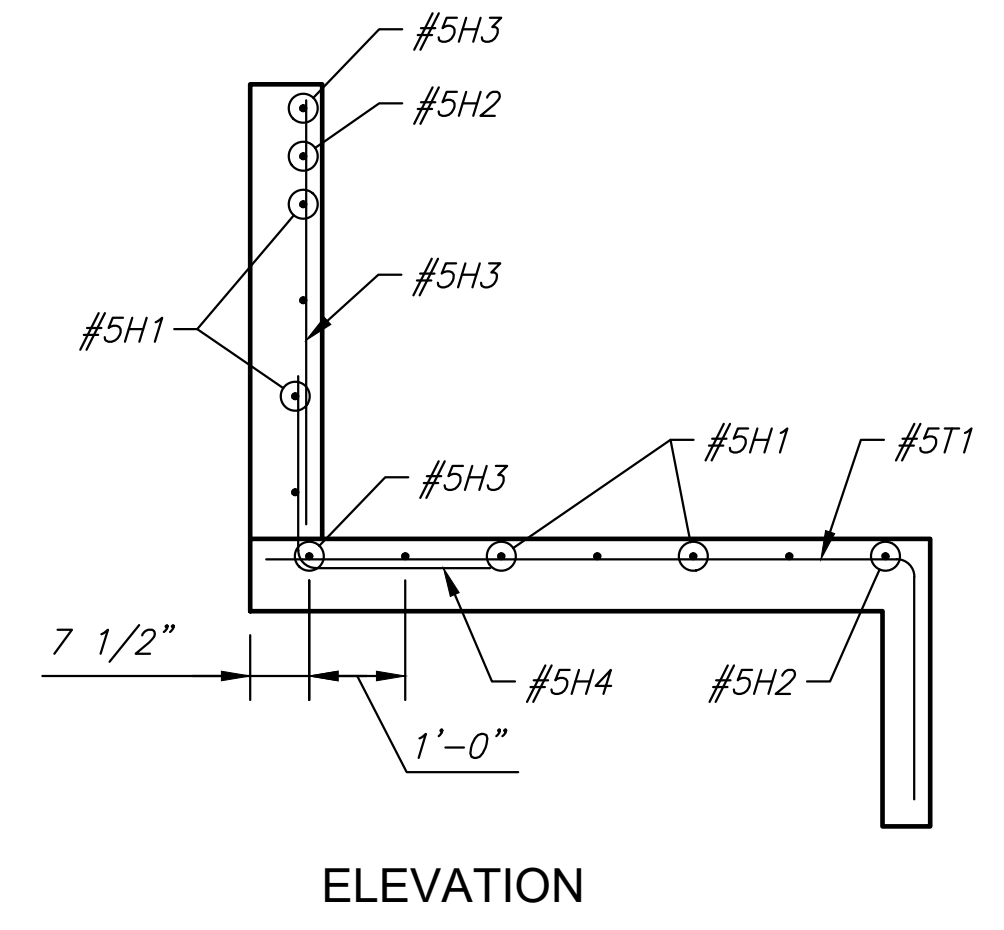


STREET IMPROVEMENTS FOR
21ST STREET - MOSLEY TO I-135
PHASE 1

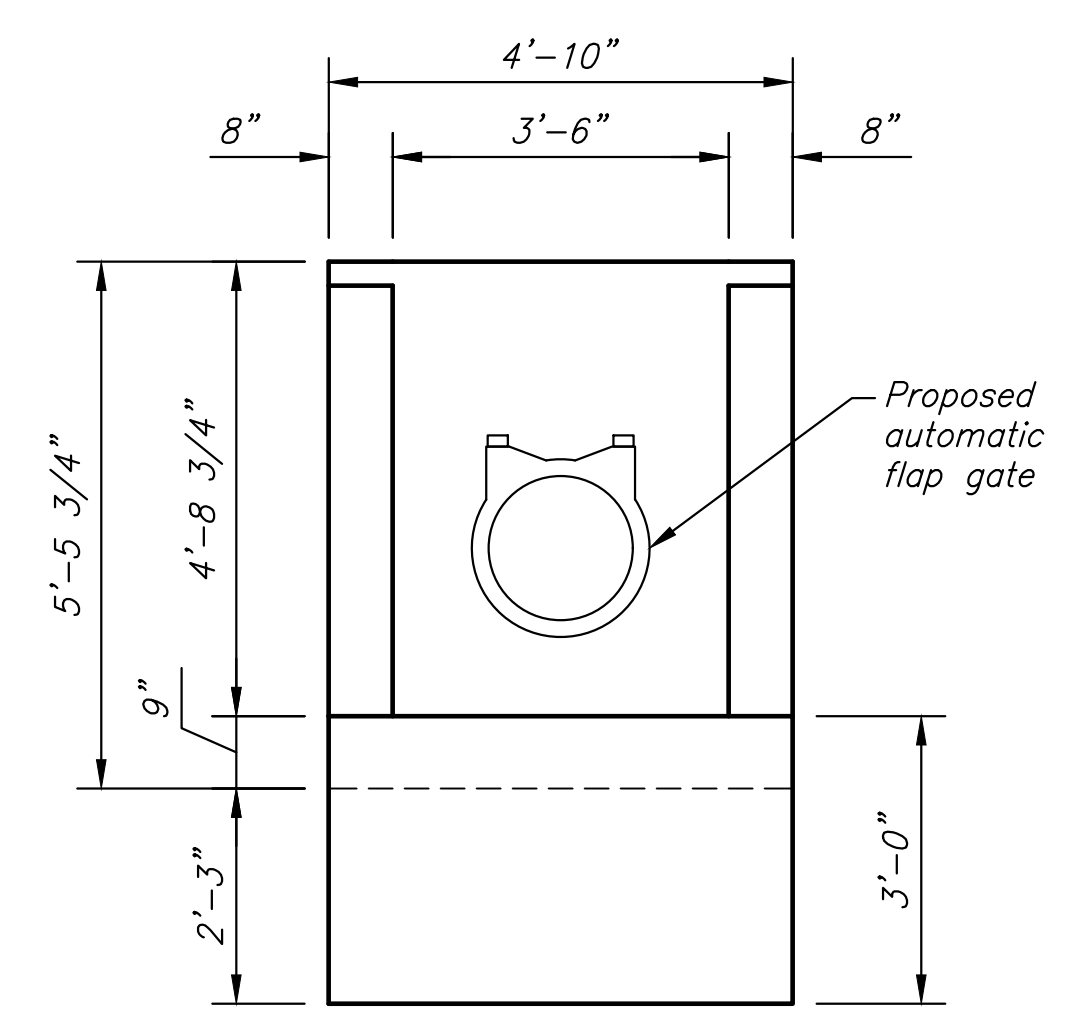


SECTION

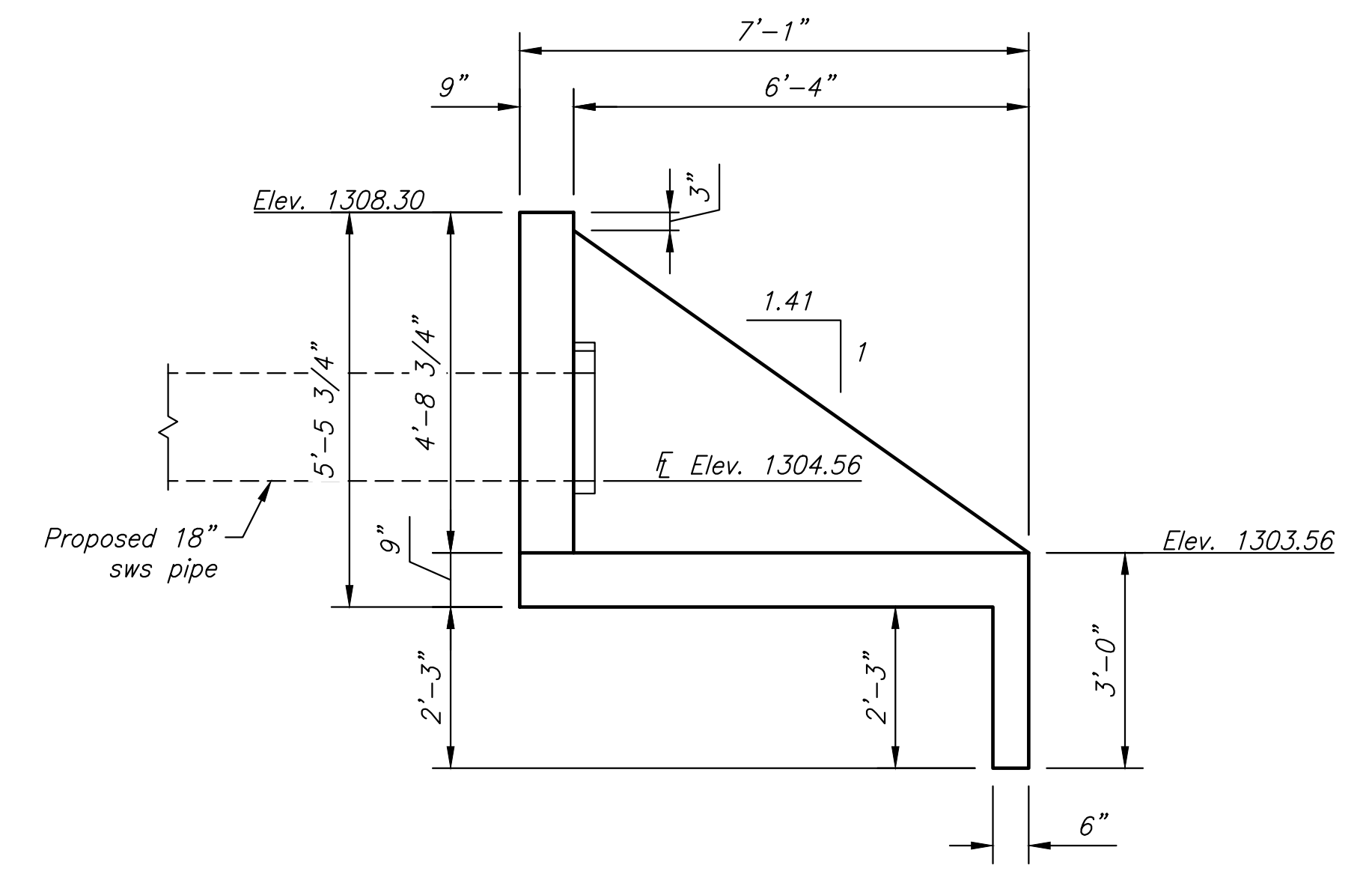
BACKWALL & FLOOR



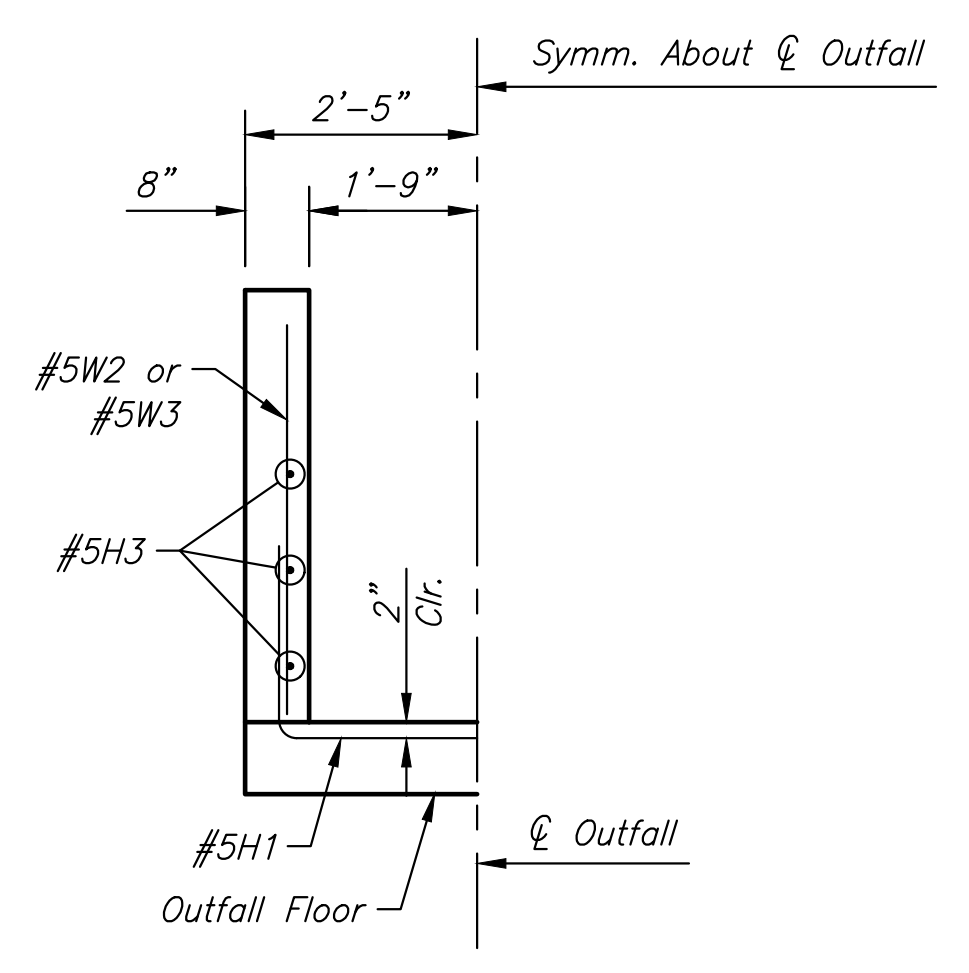
ELEVATION



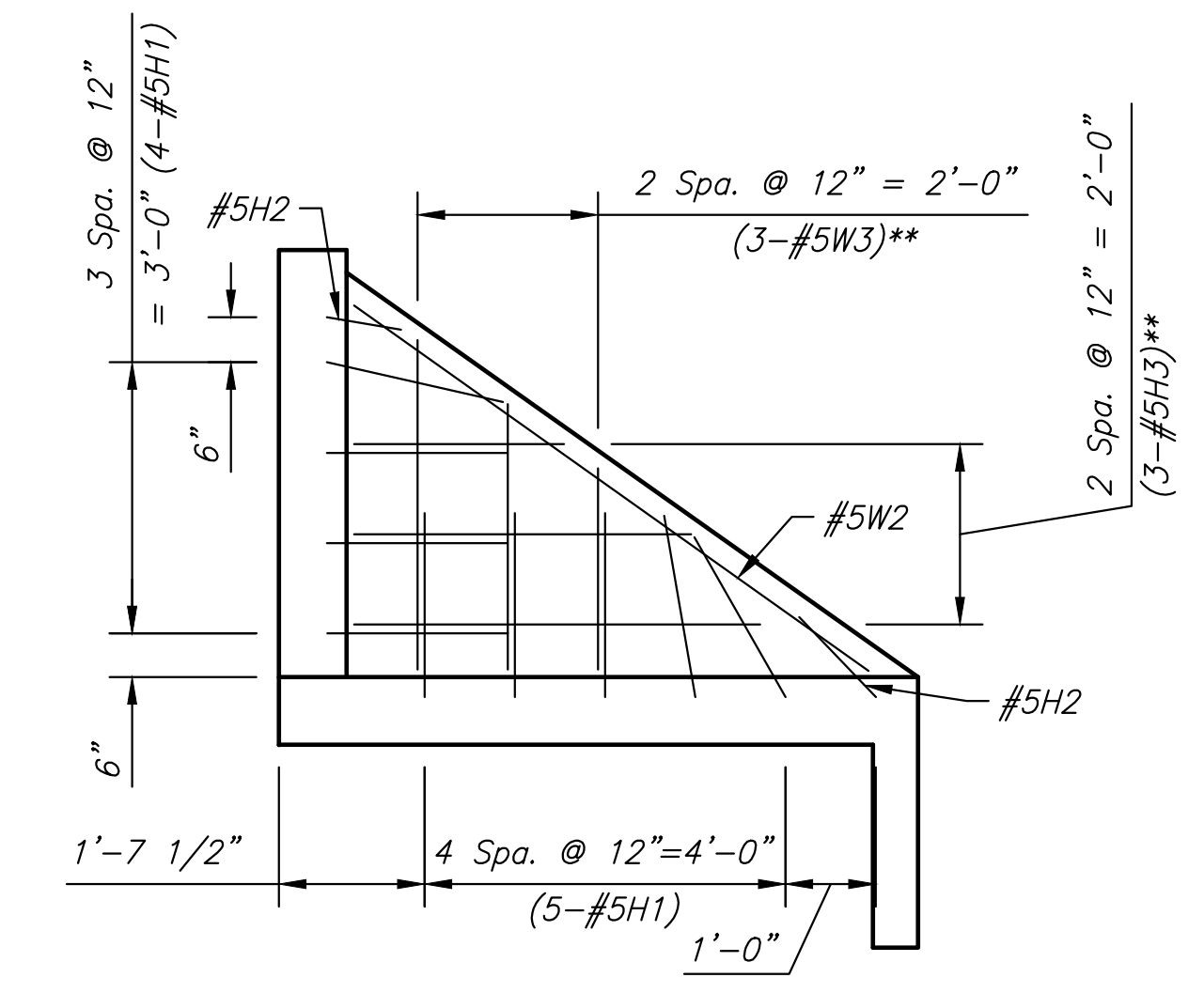
FRONT VIEW



SECTION A-A



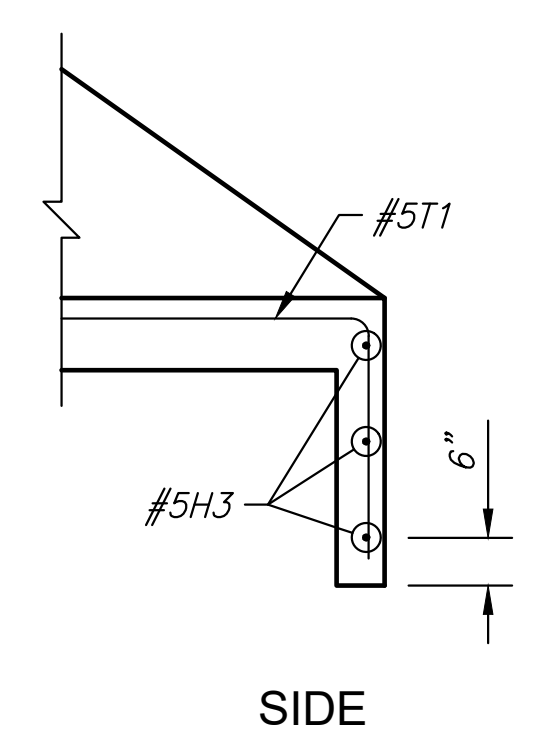
HALF SECTION



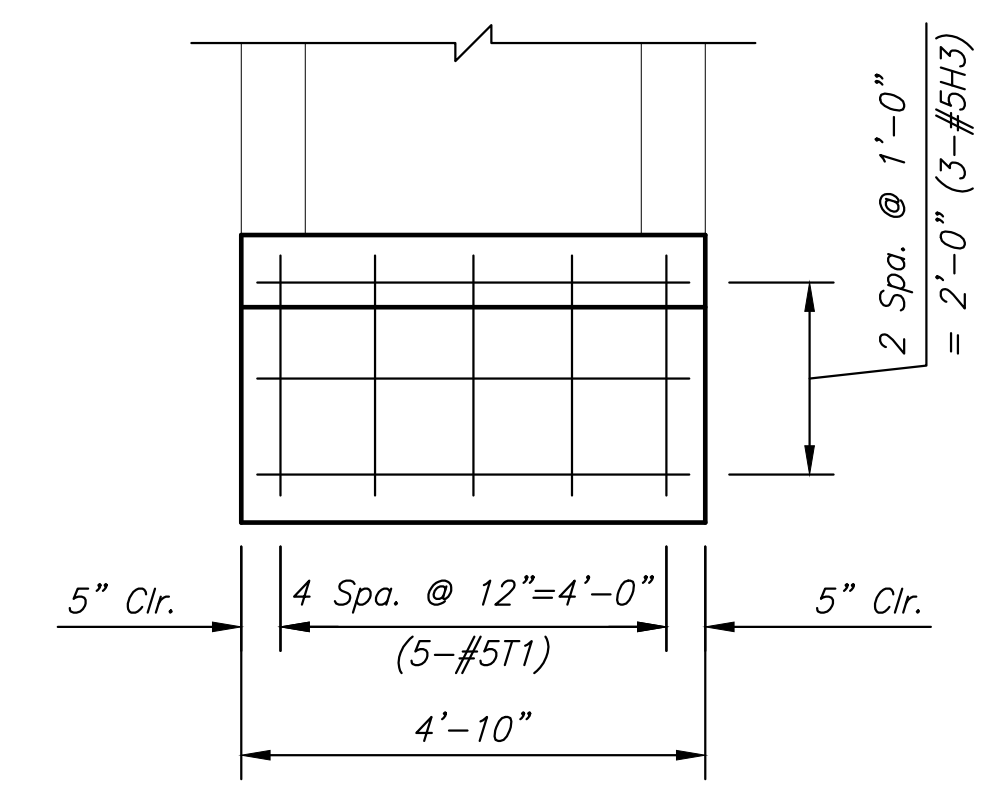
ELEVATION

WINGS

Note:
Rotate #5H1 and #5H2 bars to
maintain 2" clear of concrete.



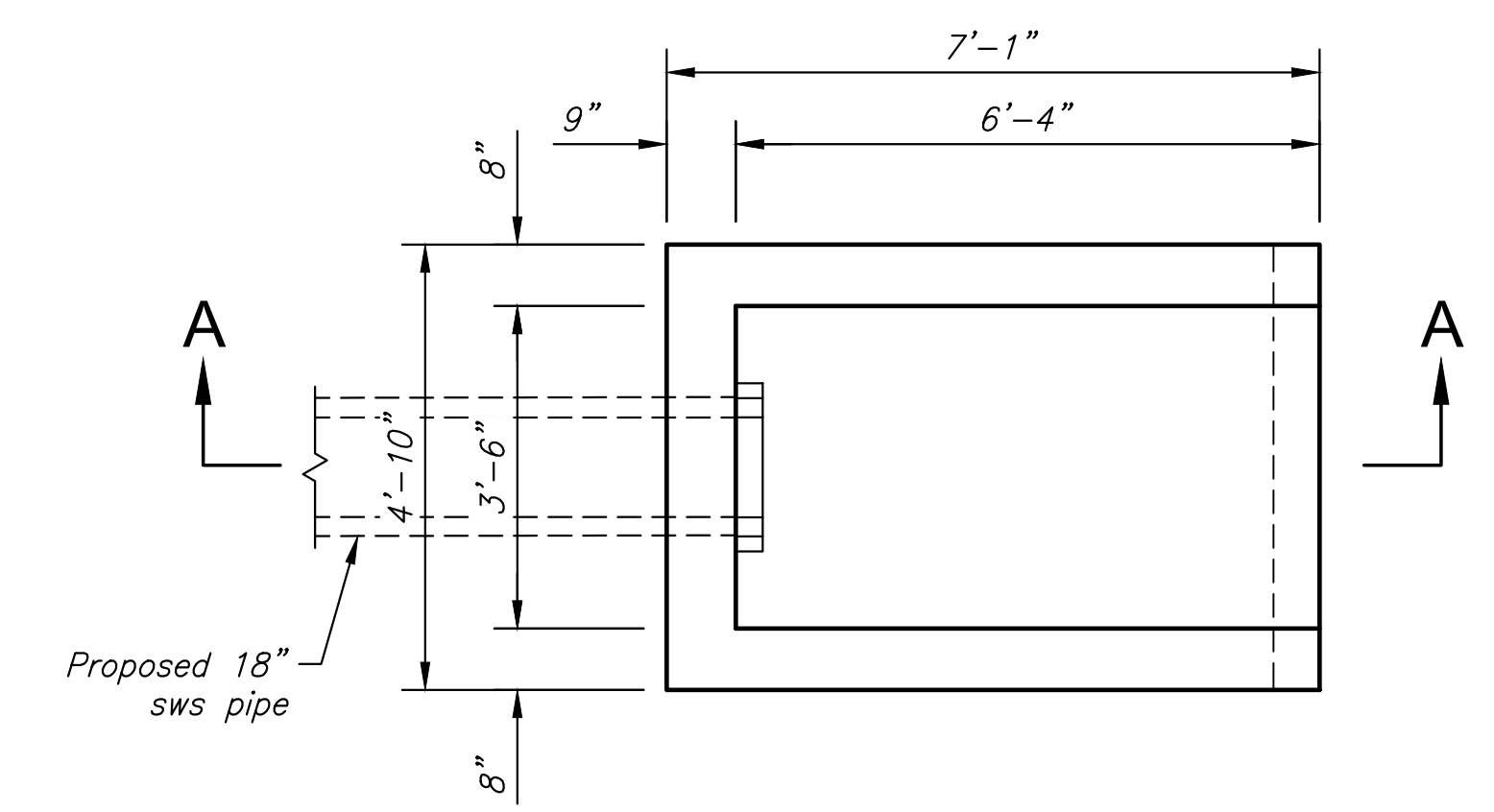
SIDE



FRONT

TOE WALL

(For Clarity, Toewall Reinf. Shown Only)



PLAN

Note:
For bar bending diagrams, bill of reinforcing
steel & quantities, see sheet 35.

* Field Cut to clear 18" SWS Pipe
and Flap Gate Hardware.

** Field Cut to keep 2" clear of
concrete

©2022
MKEC Engineering
All Rights Reserved
www.mkec.com
These drawings and their contents,
including, but not limited to, all concepts,
designs, & ideas are the exclusive
property of MKEC Engineering (MKEC),
and may not be used or reproduced in any
way without the express consent of MKEC.

**SWS OUTFALL
DETAILS**

PROJECT NO.	472-2021-085733	
DATE	12/28/2022	
SCALE	NTS	
DESIGNED	DRAWN	CHECKED
SLF	RAM	JRA

NO.	REVISION	DATE

SHEET NO.

J:\PROJECTS\2022\12\10\10465_COW_21ST STREET FROM MOSLEY TO I-135\00 210465 CAD\SHS\PHASE 1\210465 OUTFALL DETAILS 2.DWG PLOTTED: Wednesday, December 28, 2022 @ 11:04AM