

DESIGNATION KEY

WICH - 1 - 42 - 15

↑ Luminaire Arm Span (FT)

↑ Signal Arm Span (FT)

↑ Type 1 or 2

↑ Wichita Pole Series

AB = Anchor Bolts (Included)

HH = Handhole

FPGV = Finish Paint over Galvanizing

TYPE 1 = No Luminaire Height (See Table 3)

TYPE 2 = Combo Pole (Includes Height for Luminaire)

DESIGN CRITERIA

THE MAST ARM TRAFFIC STRUCTURES SHOWN ON THIS DRAWING SHALL BE DESIGNED IN ACCORDANCE WITH THE 2013 AASHTO "STANDARD SPECIFICATIONS FOR STRUCTURAL SUPPORTS FOR HIGHWAY SIGNS, LUMINAIRES AND TRAFFIC SIGNALS", LATEST EDITION.

ASSEMBLY NOTE(S)

UPON INITIAL FIELD ASSEMBLY OF THE MAST-ARM'S FIRST SECTION'S BUTT PLATE TO THE MAST-ARM VERTICAL POLE'S BUTT PLATE, IF THE END USER DETERMINES THAT THERE IS A SUFFICIENT GAP AT A BOLT HOLE SUCH THAT THERE WILL NOT BE FACE-TO-FACE CONTACT BETWEEN THE TWO BUTT PLATES, THEN A WASHER SHALL BE INSERTED TO PROVIDE FACE-TO-FACE CONTACT BETWEEN THE TWO BUTT PLATES IN ACCORDANCE WITH SECTION 5.16 "BOLTED CONNECTIONS" OF THE 2013 EDITION OF AASHTO.

THE POLE SHOP DRAWING SUBMITTAL SHALL INCLUDE A FOUNDATION DIAGRAM INDICATING THE ORIENTATION OF BOLT PATTERNS FOR EACH POLE FOUNDATION. THE DRAWING SHALL INCLUDE A NORTH ARROW TO INSURE PROPER ORIENTATION OF POLE AND MAST ARM ON EACH FOUNDATION.

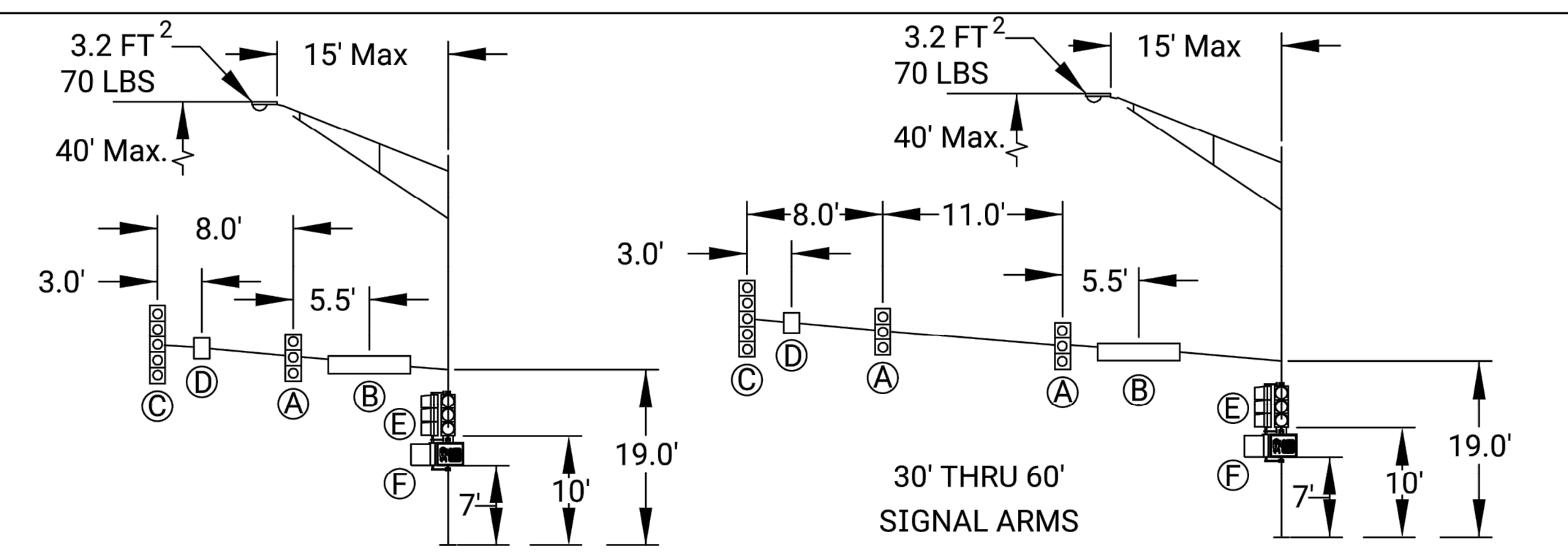
MANUFACTURER SHALL SHOP FIT COMPONENTS AND VERIFY CONNECTIONS PRIOR TO SHIPPING. FAILURE OF PROPER ALIGNMENT DURING ERECTION IN THE FIELD DUE TO MANUFACTURING SHALL BE THE RESPONSIBILITY OF THE MANUFACTURE AND MAY BE REPLACED AT NO COST IF DEEMED NECESSARY BY THE CITY TRAFFIC ENGINEER.

LUMINAIRE DIMENSIONS SHOWN ARE NOMINAL. CONTRACTOR AND SUPPLIER SHALL COORDINATE WITH LUMINAIRE ARM SUPPLIER TO INSURE PROPER MOUNTING PRIOR TO MANUFACTURING.

AASHTO 2013 SPECIFICATIONS

TABLE 2: MATERIAL DATA

COMPONENT	ASTM DESIGNATION
ALL TAPERED TUBES	A595 GR.A OR A572
BASE PLATE	A36
SIMPLEX PLATE	A36
ANCHOR BOLTS	F1554 GR.55
ARM CONNECTING BOLTS	A325
GALVANIZING-HARDWARE	HOT DIP ZINC



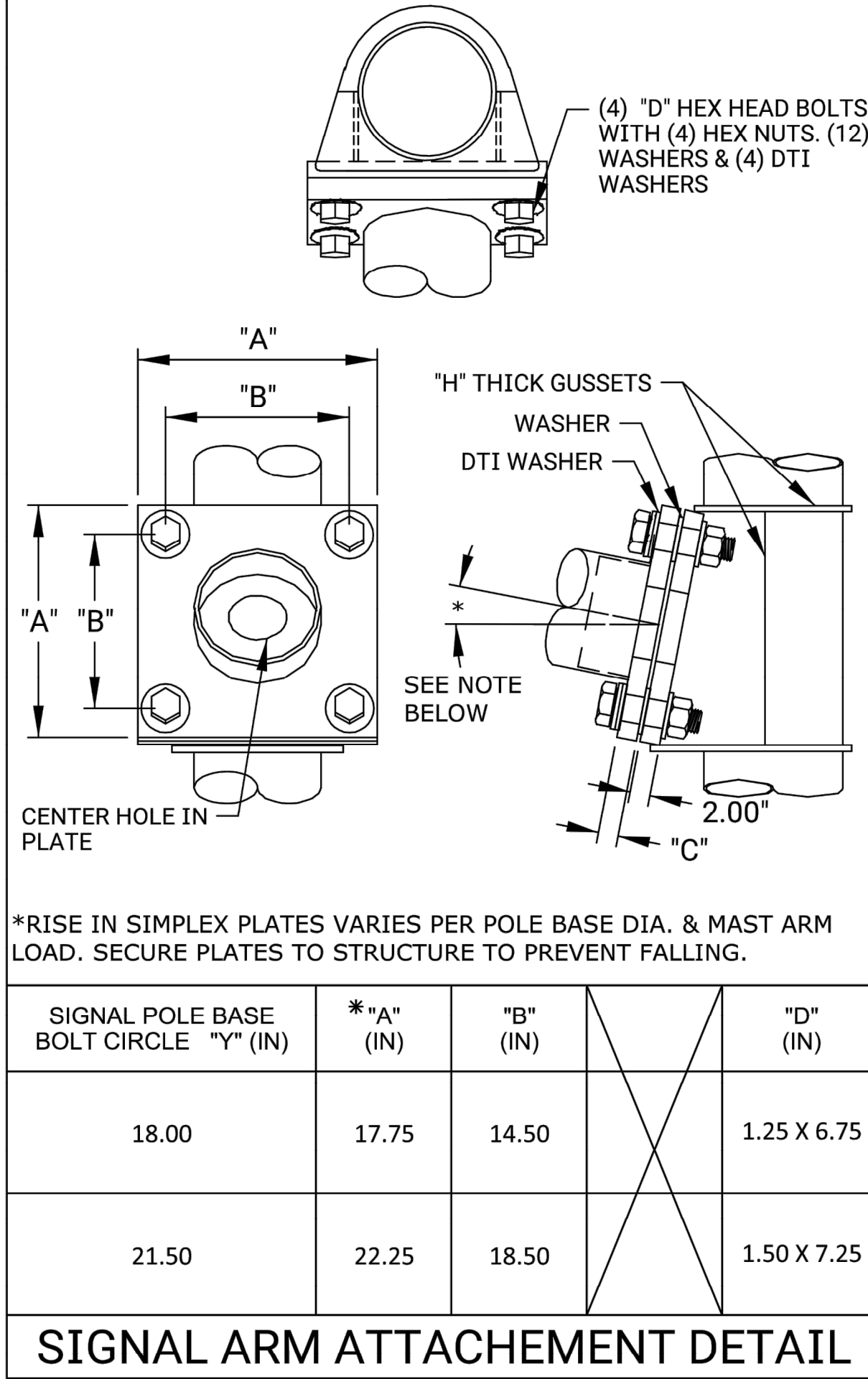
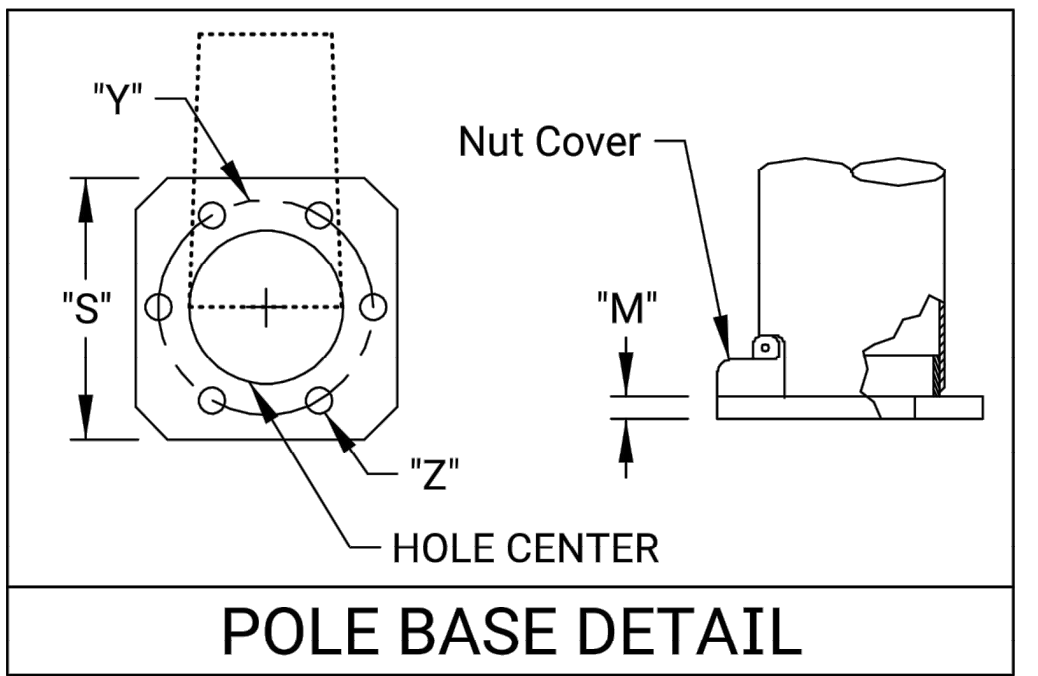
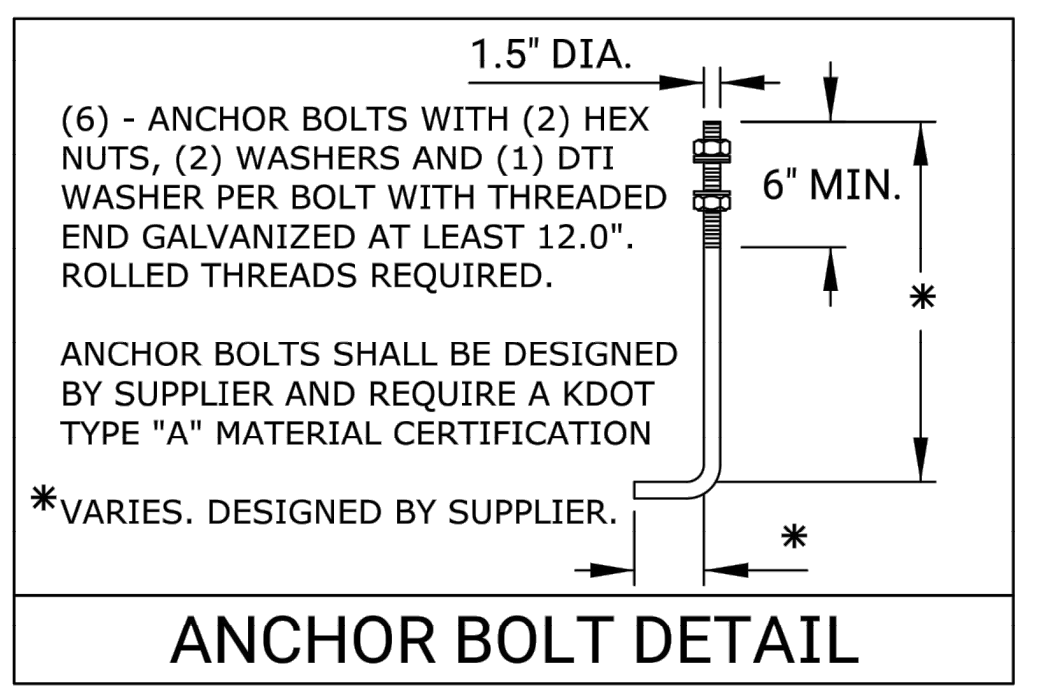
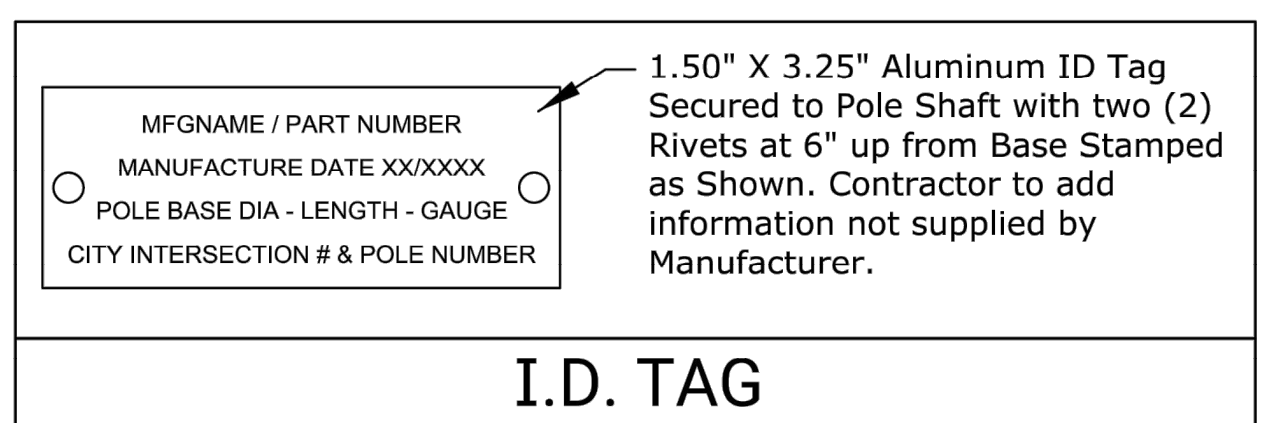
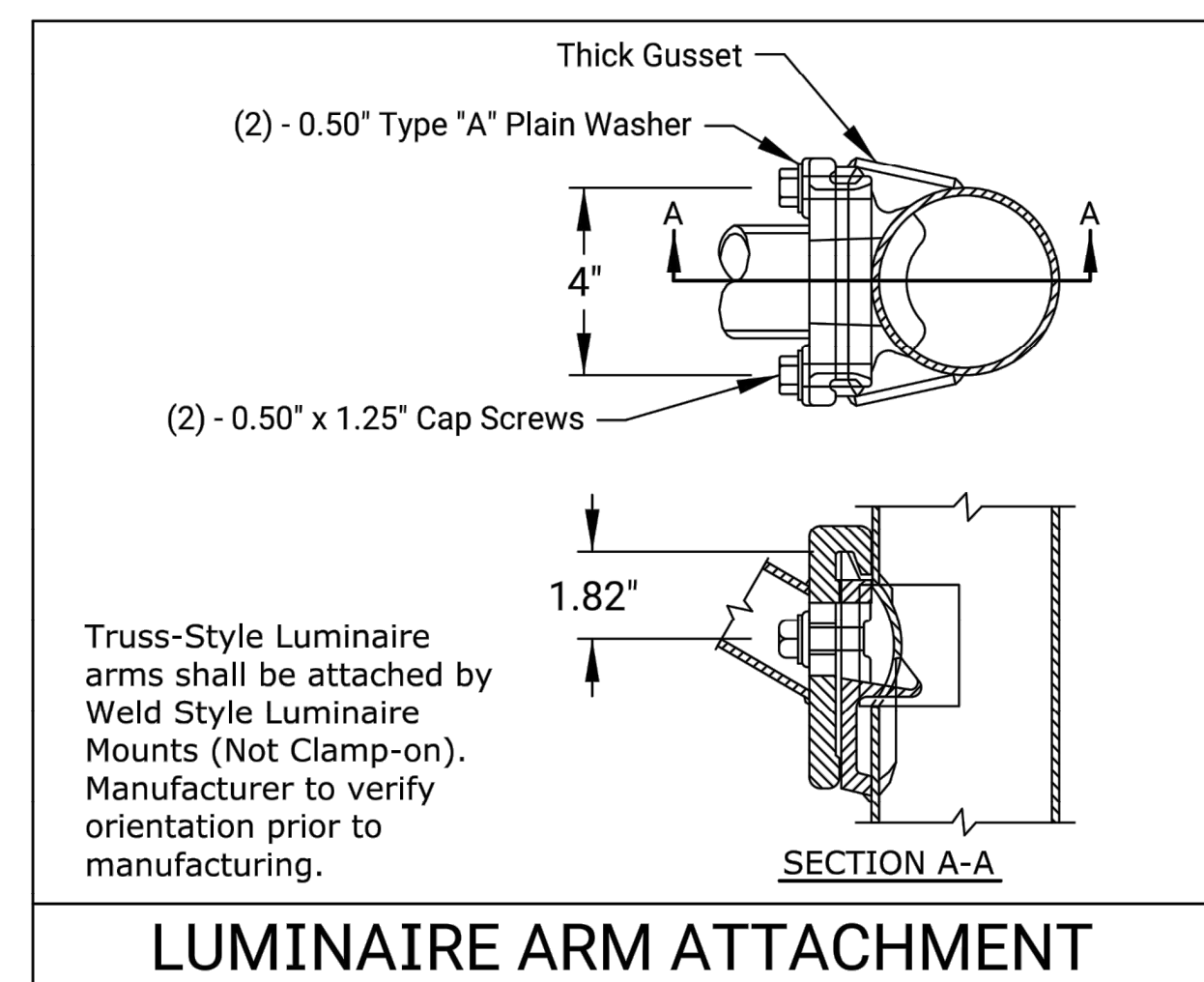
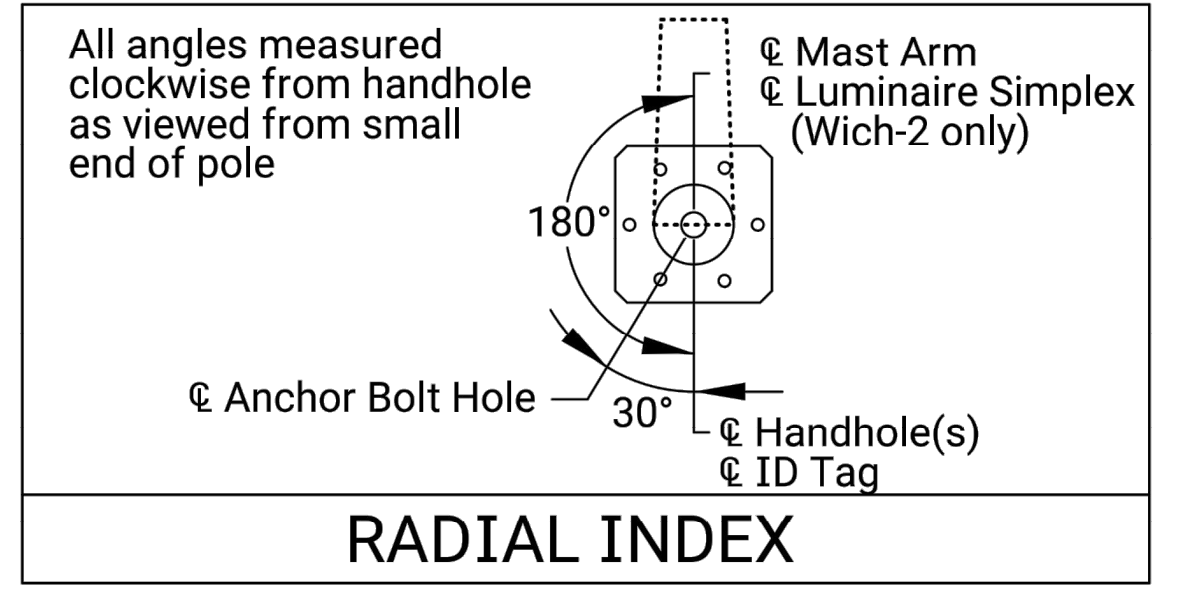
DEVICE	DESCRIPTION	PROJ. AREA (FT)	WEIGHT (LBS)
(A)	12'-3 SEC. SIGNAL WITH BACK PLATES	8.67	30
(B)	36" X 96" STREET NAME SIGN	24.00	75
(C)	12'-5 SEC. SIGNAL WITH BACK PLATES	13.33	50
(D)	30" X 36" SIGNAL ARM MOUNTED SIGN	7.50	25
(E)	12'-3 SEC. SIGNAL WITH NO BACK PLATES	13.47	80
(F)	SINGLE SECTION PEDESTRIAN SIGNAL	8.00	80

DESIGN LOADING INFORMATION

- For Design Information Only. Dimensions NOT for Construction -

TABLE 3: LUMINAIRE MOUNTING HEIGHT

POLE TYPE	WICH-1	WICH-2
LUM. MOUNTING HEIGHT	---	40' - 0"
POLE LENGTH	20' - 6"	35' - 0"



STANDARD POLE FINISH

BASE COAT: HOT-DIP GALVANIZED TO ASTM A123

PRIME COAT: POLYAMIDOAMINE OR POLAMIDE EPOXY

FINISH COAT: ALIPHATIC ACRYLIC POLYURETHANE W/ UV PACKAGE

COLOR: BLACK

SPEC: F-604A

REPAIR & MODIFICATIONS

IN THE EVENT THE POLE OR MASTARM FINISH IS DAMAGED, THE CONTRACTOR SHALL USE THE BASE PRIMER AND FINISH COAT MATERIALS FURNISHED BY THE MANUFACTURER AND INCLUDED WITH THE STRUCTURE. NO OTHER PRODUCTS WILL BE APPROVED UNLESS APPROVED BY THE ENGINEER.

IN THE EVENT SIGNAL STRUCTURE MODIFICATIONS ARE REQUIRED, THE CONTRACTOR SHALL PROVIDE THE ENGINEER WITH WRITTEN PROCEDURES AND APPROVED MEANS AND METHODS FROM THE MANUFACTURE. MODIFICATIONS SHALL NOT AFFECT THE STRUCTURAL INTEGRITY OR WARRANTY OF THE STRUCTURE. ANY CHANGE SHALL BE APPROVED BY THE ENGINEER IN WRITING PRIOR TO ACCEPTANCE. THE CITY HAS THE RIGHT TO REJECT MODIFICATIONS AND REQUIRE REPLACEMENT AT NO ADDITIONAL COST, INCLUDING LABOR AND MATERIAL.

THE CONTRACTOR SHALL INSTALL ALL REQUIRED COMPONENTS PROVIDED BY THE MANUFACTURE.

TABLE 1: POLE AND MAST ARM DATA

DESIGNATION KEY		POLE BASE			ANCHOR BOLT		TRAFFIC SIGNAL POLES SHALL INCLUDE TWO (2) POLE BASE PLATE AND CORRESPONDING MAST ARM ATTACHMENT SIZES.
POLE SERIES	POLE TYPE	SIGNAL ARM SPAN (FT)	*SQUARE "S" (IN)	BOLT CIRCLE "Y" (IN)	HOLE "Z" (IN)	DIAMETER (IN) "K"	
WICH	1 OR 2	18.0	23.00	18.00	2.00	1.50	6
		24.0					
		30.0					
		36.0	26.50	21.50			
		42.0					
		48.0					
54.0	26.50	21.50					
60.0							

DIMENSIONS SHOWN ON TABLE(S) SHALL REMAIN CONSTANT, REGARDLESS OF POLE MANUFACTURE TO INSURE INTERCHANGEABILITY.

DIMENSIONS AND THICKNESSES SHOWN ON DETAILS BUT NOT SHOWN IN TABLE(S) MAY VARY BY MANUFACTURE.

*PREFERRED DIMENSION(S). DIMENSION MAY VARY SLIGHTLY BY MANUFACTURER



SIGNAL POLE DATA & SPECIFICATIONS

TRAFFIC ENGINEER APP'D 01/27/22
MIKE ARMOUR, P.E.

PROJECT NUMBER 472-2021-085733 ORG NUMBER 448-2021-002927 DATE 12/28/2022

CITY ENGINEER'S OFFICE SHEET 64 OF 92
CITY HALL - SEVENTH FLOOR
455 NORTH MAIN STREET
WICHITA, KANSAS 67202-1620
(316) 268-4501

TR-109
Sh. No. 64

REVISIONS
 NO. DATE BY APPD
 3
 2
 1
 DATE
 BY
 APPD
 j:\Projects\2021\2101010455_COW_21st Street from Mosley to I-135\00 210455 CAD\SHITS\05 Civil\Signals\210455-05-5528.dwg