

CATALOG NUMBER:
CP3B51C14AABKSL1



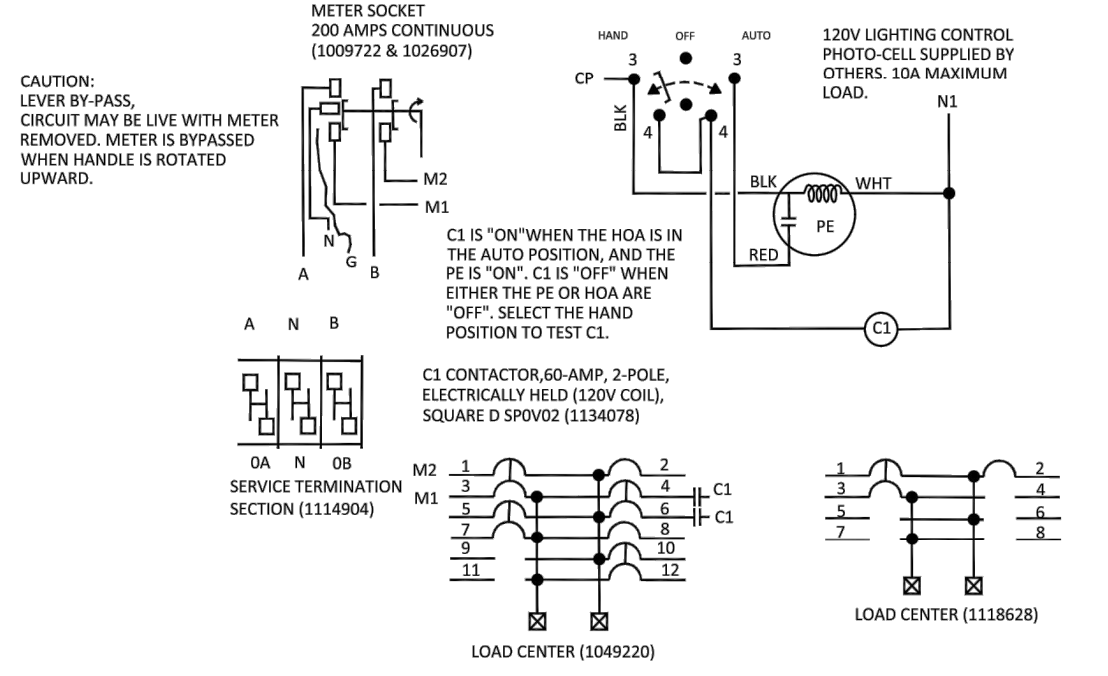
SHIPPING MAY LOOSEN ELECTRICAL CONNECTIONS. CHECK TIGHTNESS BEFORE ENERGIZING.
BONDED NEUTRAL - REMOVE NEUTRAL LOAD CONDUCTORS FOR TEST PURPOSES ONLY.
FIELD INSTALLED CONDUCTORS SHALL BE 60° C, 75° C, OR 90° C, SIZED TO 60° C RATING FOR 110 AMPS OR LESS; AND 75° C OR 90° C FOR 125 AMPS AND ABOVE.

NO.	AMP.	POLES	CIRCUIT DESCRIPTION	NO.	AMP.	POLES	CIRCUIT DESCRIPTION
1	100	2	MAIN	2	15	1	CONTROL
3				4	60	2	SWITCHED LC CONTROL
5	50	2	SPARE	6	30	1	SPARE
7				8	30	1	SPARE
9				10	30	2	SPARE
11				12			

NO.	AMP.	POLES	CIRCUIT DESCRIPTION	NO.	AMP.	POLES	CIRCUIT DESCRIPTION
13	30	2	SPARE	14	30	1	SPARE
15				16			
17				18			
19				20			

AIC RATING	MAIN	BRANCHES
10	SIEMENS TYPE QP, CUTLER HAMMER TYPE HQP, BR, GE TYPE THQL	SIEMENS TYPE: QP (1-POLE 70A MAX), QT, QPF, CUTLER HAMMER TYPE BR, QFCB, HQP, QPQF, GE TYPE TQL, THQL, THQL-GF
22	SIEMENS TYPE QHP, CUTLER HAMMER TYPE QPHW, BRH, GE TYPE THHQL	SIEMENS TYPE: QHP (1-POLE 70A MAX), QPHF, CUTLER HAMMER TYPE BRH, QPHW, QPHQF, GE TYPE THHQL, THHQL-GF
SERIES RATED	SIEMENS QPH CUTLER HAMMER TYPE QPHW GE TYPE THHQL	SIEMENS TYPE: QP (1-POLE 70A MAX), QT, QPF CUTLER HAMMER TYPE HQP, QPQF GE TYPE THQL

FIELD WIRED CONNECTORS		BUS CONNECTIONS		TERMINAL INFORMATION, USE AL/CLU CONDUCTORS	
Socket Size	Torque Lb-in.	AWG Wire Size	Terminal Size	Terminal Size	Terminal Size
5/16"	275	#4-10	20	10-24	AL 30
3/8"	375	#8	25	10-24	CU 50
1/2"	500	#8	35	1/4-20	AL 50
9/16"	600	#3-1/2	50	1/4-20	CU 72

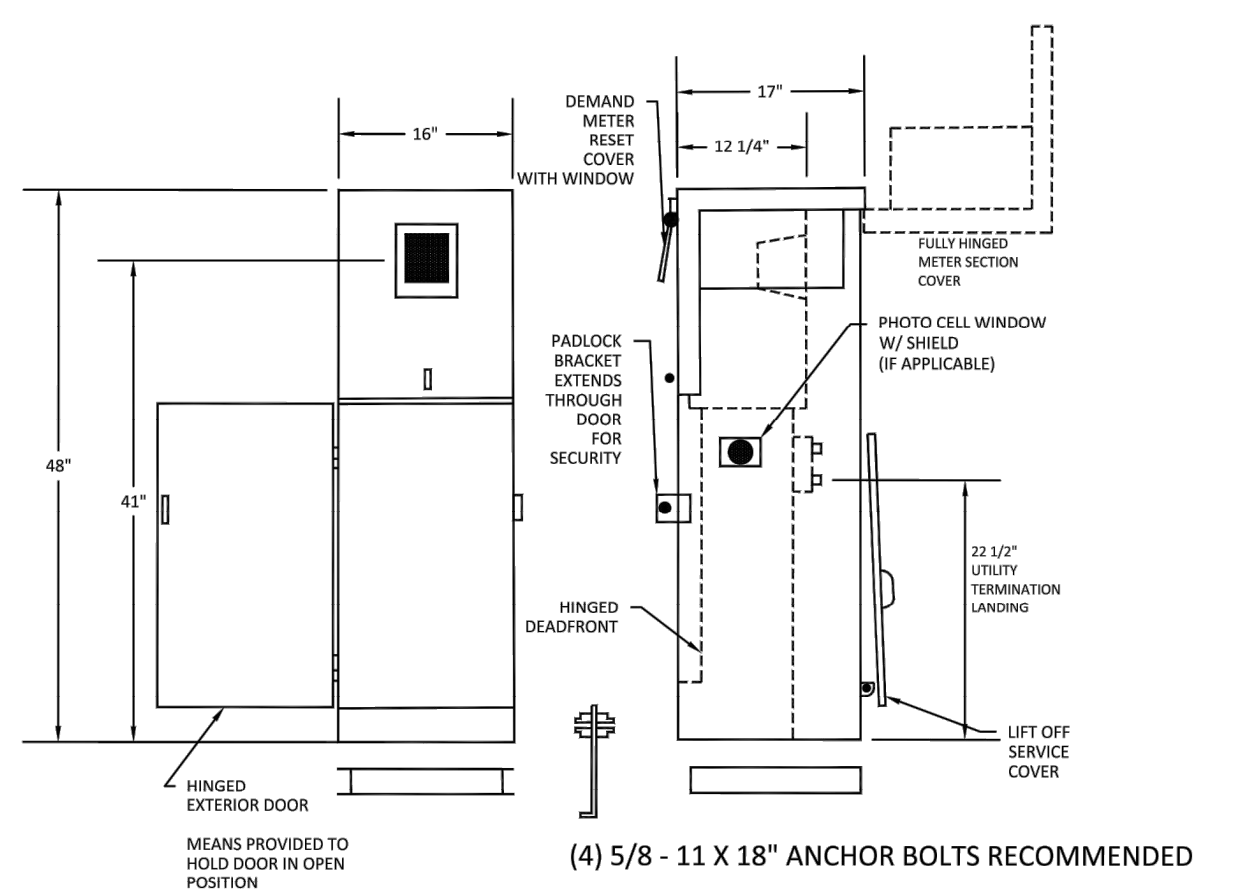


120/240 VAC, 1-PHASE, 3-WIRE, 100AMPS MAX. (SEE MAIN CIRCUIT BREAKER RATING)
RAINPROOF - TYPE 3R, ALUMINUM ENCLOSURE, PAINTED BLACK (RAL 9017)
ENCLOSED INDUSTRIAL CONTROL - SUITABLE ONLY FOR USE AS SERVICE EQUIPMENT
THE SHORT CIRCUIT RATING IS 10,000 RMS SYMMETRICAL AMPERES MAX. AT 240V MAX. IN ACCORDANCE WITH THE TABLE BELOW, BUT IS LIMITED TO THE LOWEST SHORT CIRCUIT RATING OF ANY INSTALLED CIRCUIT BREAKER. WATT HOUR METER IS NOT INCLUDED IN THE SHORT CIRCUIT RATING. REPLACEMENT CIRCUIT BREAKERS MUST BE OF THE SAME TYPE AND RATING.

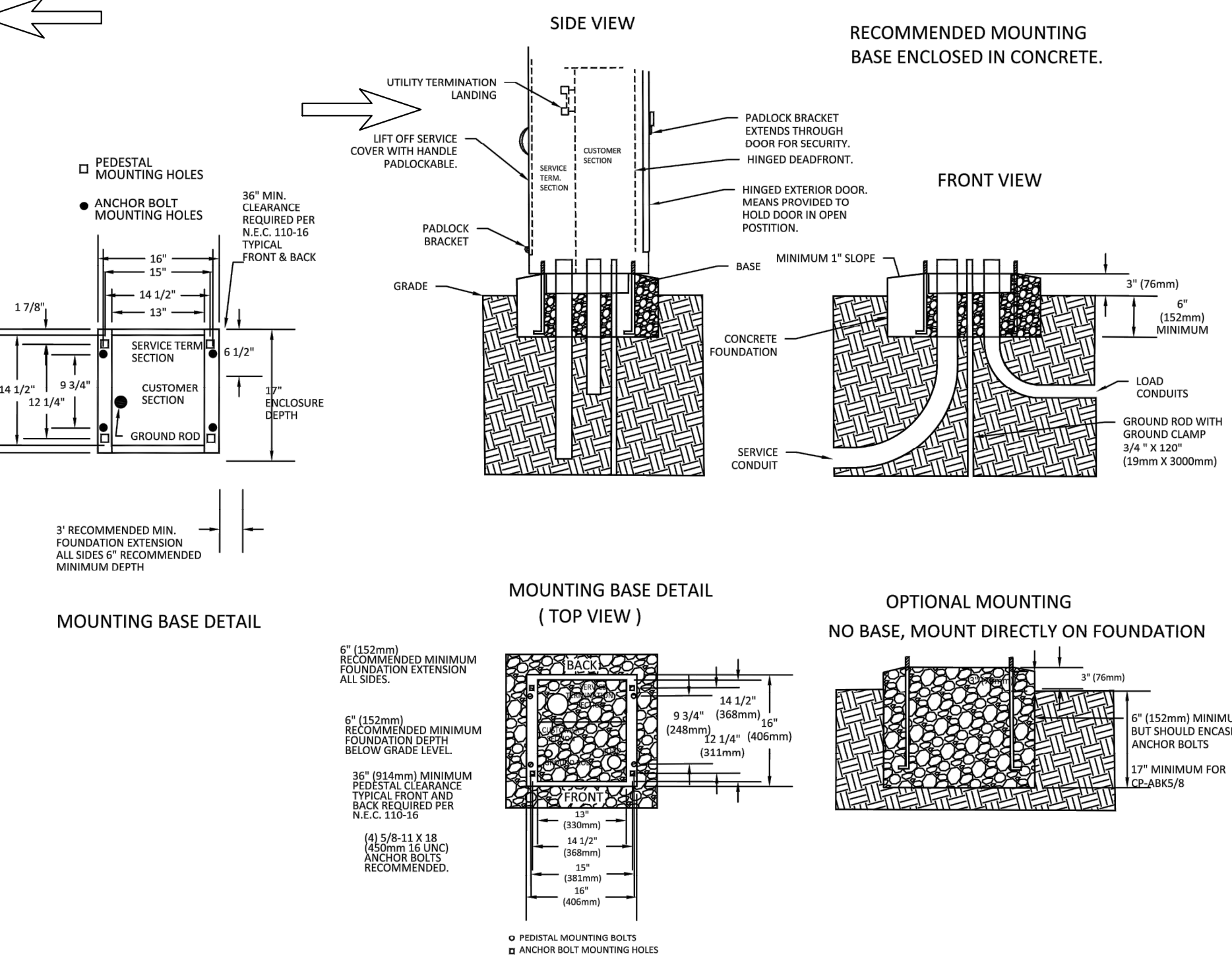
120/240 VAC, 1-PHASE, 3-WIRE, 100AMPS MAX. (SEE MAIN CIRCUIT BREAKER RATING)
RAINPROOF - TYPE 3R, ALUMINUM ENCLOSURE, PAINTED BLACK (RAL 9017)
ENCLOSED INDUSTRIAL CONTROL - SUITABLE ONLY FOR USE AS SERVICE EQUIPMENT.

GENERAL NOTES:
THE CONTRACTOR IS RESPONSIBLE FOR VERIFYING THE CORRECT METER BASE TO BE INSTALLED WITH THE UTILITY PROVIDING POWER TO THE METER.

16" COMMERCIAL PEDESTAL



TYPICAL CONSTRUCTION & INSTALLATION DETAILS



CATALOG NUMBER:
CP3B51C14BABKSL



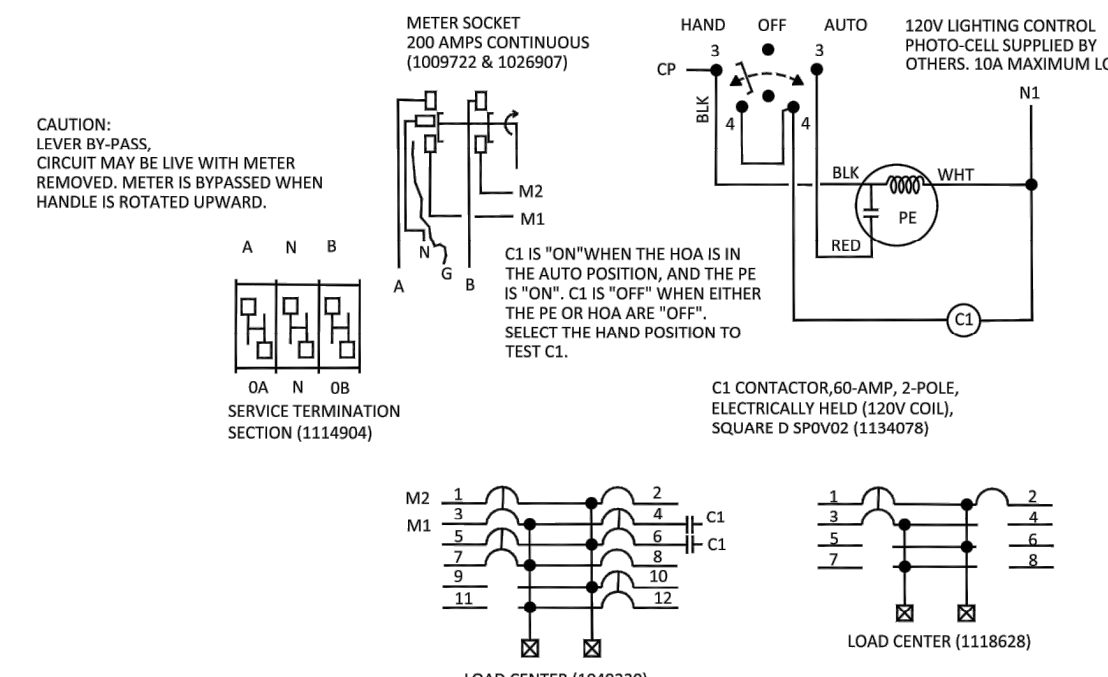
SHIPPING MAY LOOSEN ELECTRICAL CONNECTIONS. CHECK TIGHTNESS BEFORE ENERGIZING.
BONDED NEUTRAL - REMOVE NEUTRAL LOAD CONDUCTORS FOR TEST PURPOSES ONLY.
FIELD INSTALLED CONDUCTORS SHALL BE 60° C, 75° C, OR 90° C, SIZED TO 60° C RATING FOR 110 AMPS OR LESS; AND 75° C OR 90° C FOR 125 AMPS AND ABOVE.

NO.	AMP.	POLES	CIRCUIT DESCRIPTION	NO.	AMP.	POLES	CIRCUIT DESCRIPTION
1	100	2	MAIN	2	15	1	CONTROL
3				4	60	2	SWITCHED LC CONTROL
5	50	2	SPARE	6	30	1	SPARE
7				8	30	1	SPARE
9				10	30	2	SPARE
11				12			

NO.	AMP.	POLES	CIRCUIT DESCRIPTION	NO.	AMP.	POLES	CIRCUIT DESCRIPTION
13	30	2	SPARE	14	30	1	SPARE
15				16			
17				18			
19				20			

AIC RATING	MAIN	BRANCHES
10	SIEMENS TYPE QP, CUTLER HAMMER TYPE HQP, BR, GE TYPE THQL	SIEMENS TYPE: QP (1-POLE 70A MAX), QT, QPF, CUTLER HAMMER TYPE BR, QFCB, HQP, QPQF, GE TYPE TQL, THQL, THQL-GF
22	SIEMENS TYPE QHP, CUTLER HAMMER TYPE QPHW, BRH, GE TYPE THHQL	SIEMENS TYPE: QHP (1-POLE 70A MAX), QPHF, CUTLER HAMMER TYPE BRH, QPHW, QPHQF, GE TYPE THHQL, THHQL-GF
SERIES RATED	SIEMENS QPH CUTLER HAMMER TYPE QPHW GE TYPE THHQL	SIEMENS TYPE: QP (1-POLE 70A MAX), QT, QPF CUTLER HAMMER TYPE HQP, QPQF GE TYPE THQL

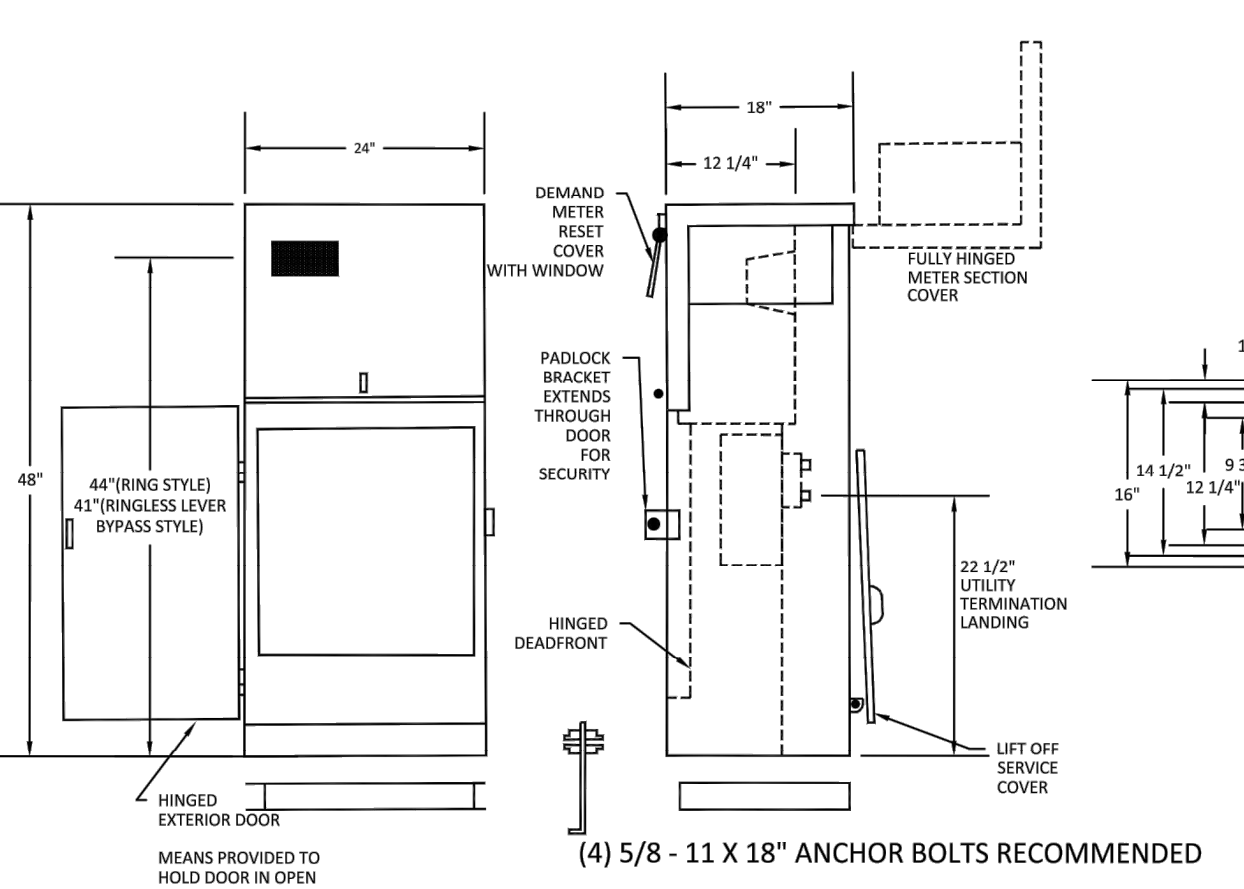
FIELD WIRED CONNECTORS		BUS CONNECTIONS		TERMINAL INFORMATION, USE AL/CLU CONDUCTORS	
Socket Size	Torque Lb-in.	AWG Wire Size	Terminal Size	Terminal Size	Terminal Size
5/16"	275	#4-10	20	10-24	AL 30
3/8"	375	#8	25	10-24	CU 50
1/2"	500	#8	35	1/4-20	AL 50
9/16"	600	#3-1/2	50	1/4-20	CU 72



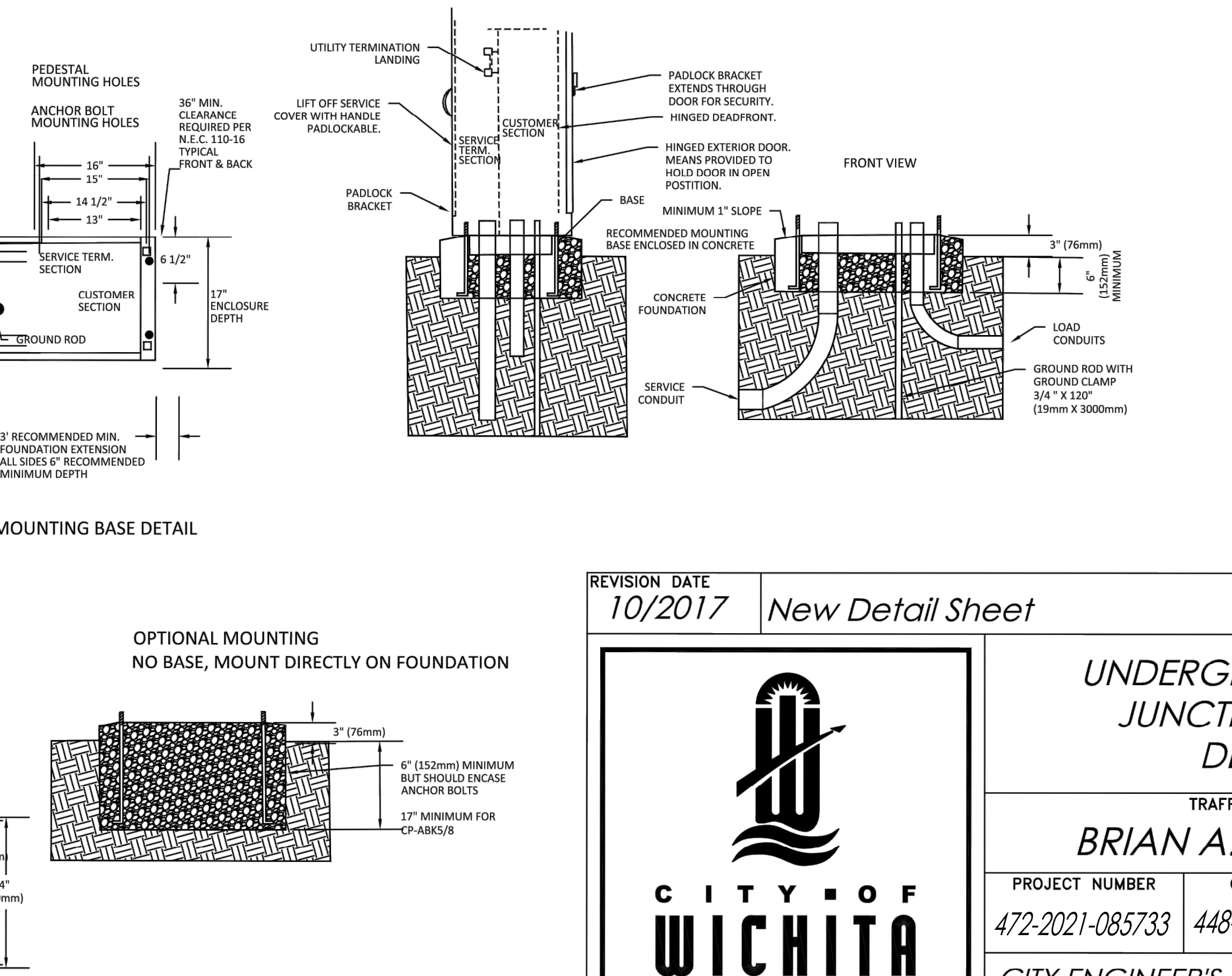
120/240 VAC, 1-PHASE, 3-WIRE, 100AMPS MAX. (SEE MAIN CIRCUIT BREAKER RATING)
RAINPROOF - TYPE 3R, ALUMINUM ENCLOSURE, PAINTED BLACK (RAL 9017)
ENCLOSED INDUSTRIAL CONTROL - SUITABLE ONLY FOR USE AS SERVICE EQUIPMENT.

GENERAL NOTES:
THE CONTRACTOR IS RESPONSIBLE FOR VERIFYING THE CORRECT METER BASE TO BE INSTALLED WITH THE UTILITY PROVIDING POWER TO THE METER.

24" COMMERCIAL PEDESTAL



TYPICAL "B" AND "M" SIZE CONSTRUCTION & INSTALLATION



REVISION DATE 10/2017	New Detail Sheet	A.S.
UNDERGROUND FEED JUNCTION BOXES DETAILS		
TRAFFIC ENGINEER BRIAN A. COON P.E.		
PROJECT NUMBER 472-2021-085733	OCA NUMBER 448-2021-002927	DATE 12/28/2022
CITY ENGINEER'S OFFICE CITY HALL - SEVENTH FLOOR 455 NORTH MAIN STREET WICHITA, KANSAS 67202-1620 (316) 268-4501		SHEET 66 OF 92