

©2022 MKEC Engineering All Rights Reserved www.mkec.com
These drawings and their contents, including, but not limited to, all concepts, designs, & ideas are the exclusive property of MKEC Engineering (MKEC), and may not be used or reproduced in any way without the express consent of MKEC.

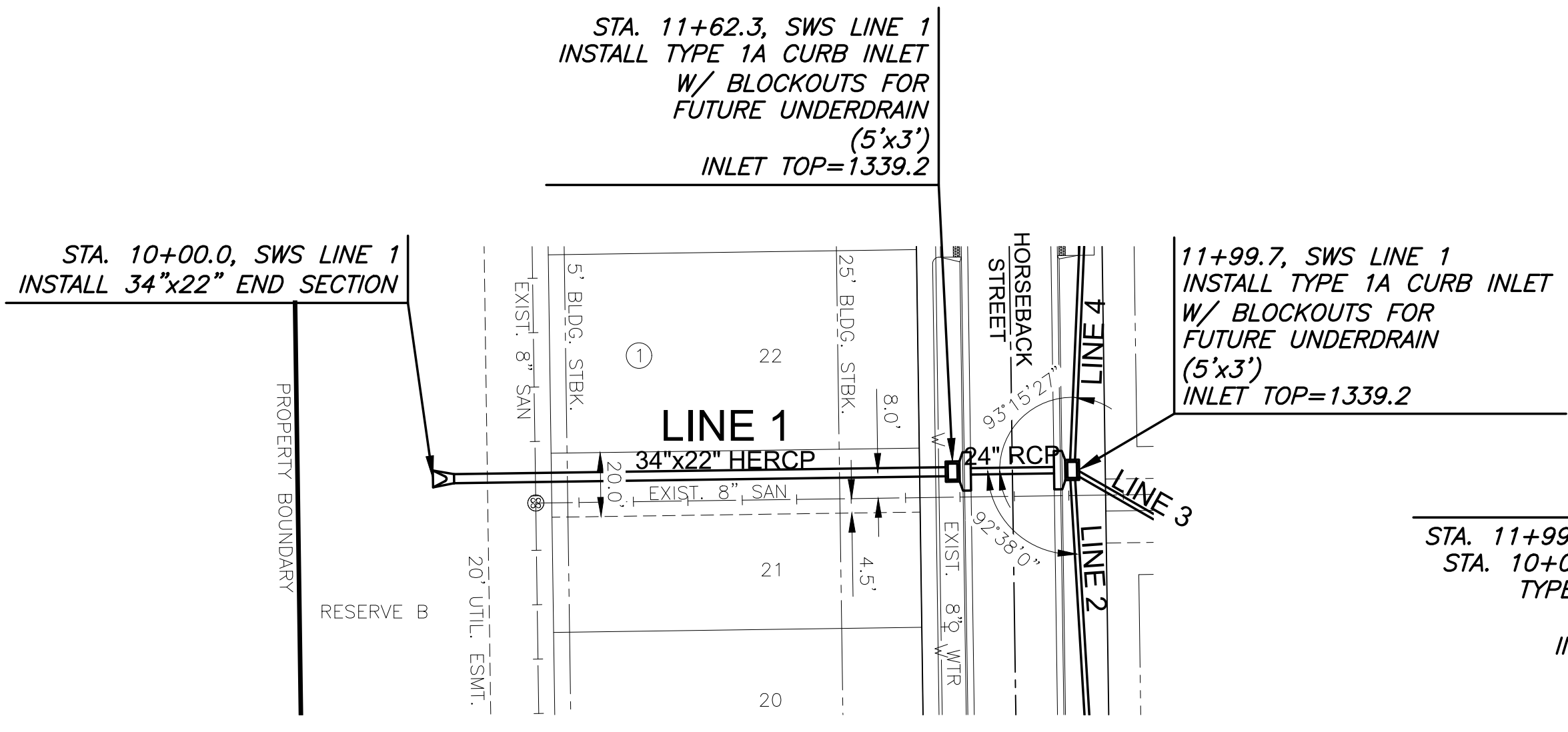
SWS LINES 1 & 3

PROJECT NO.	458-2022-085513
DATE	JAN 2023
SCALE	1" = 40'
DESIGNED	KPG
DRAWN	MKEC
CHECKED	KPG

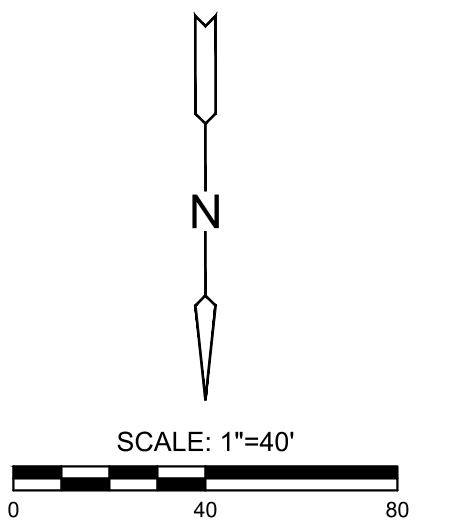
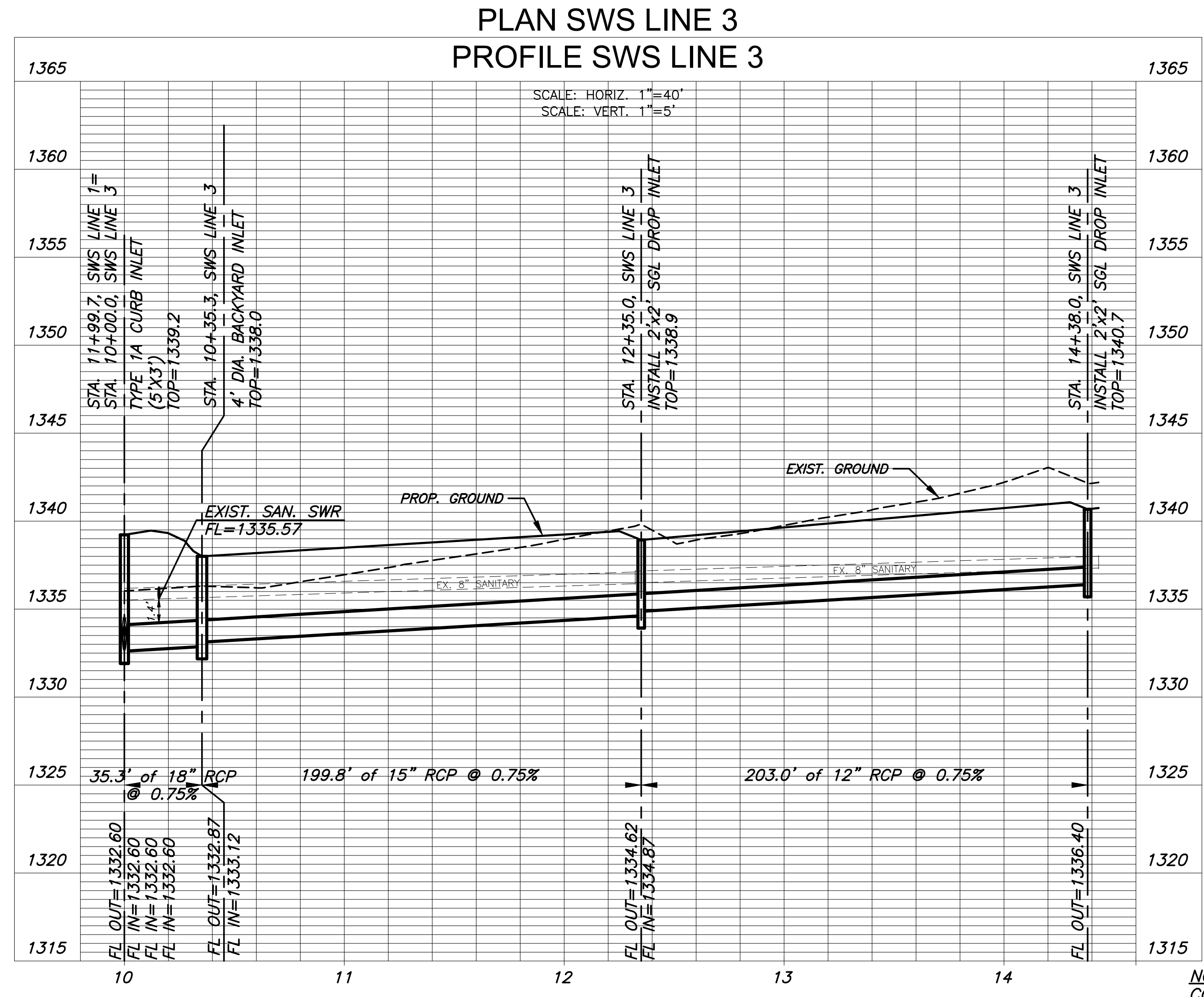
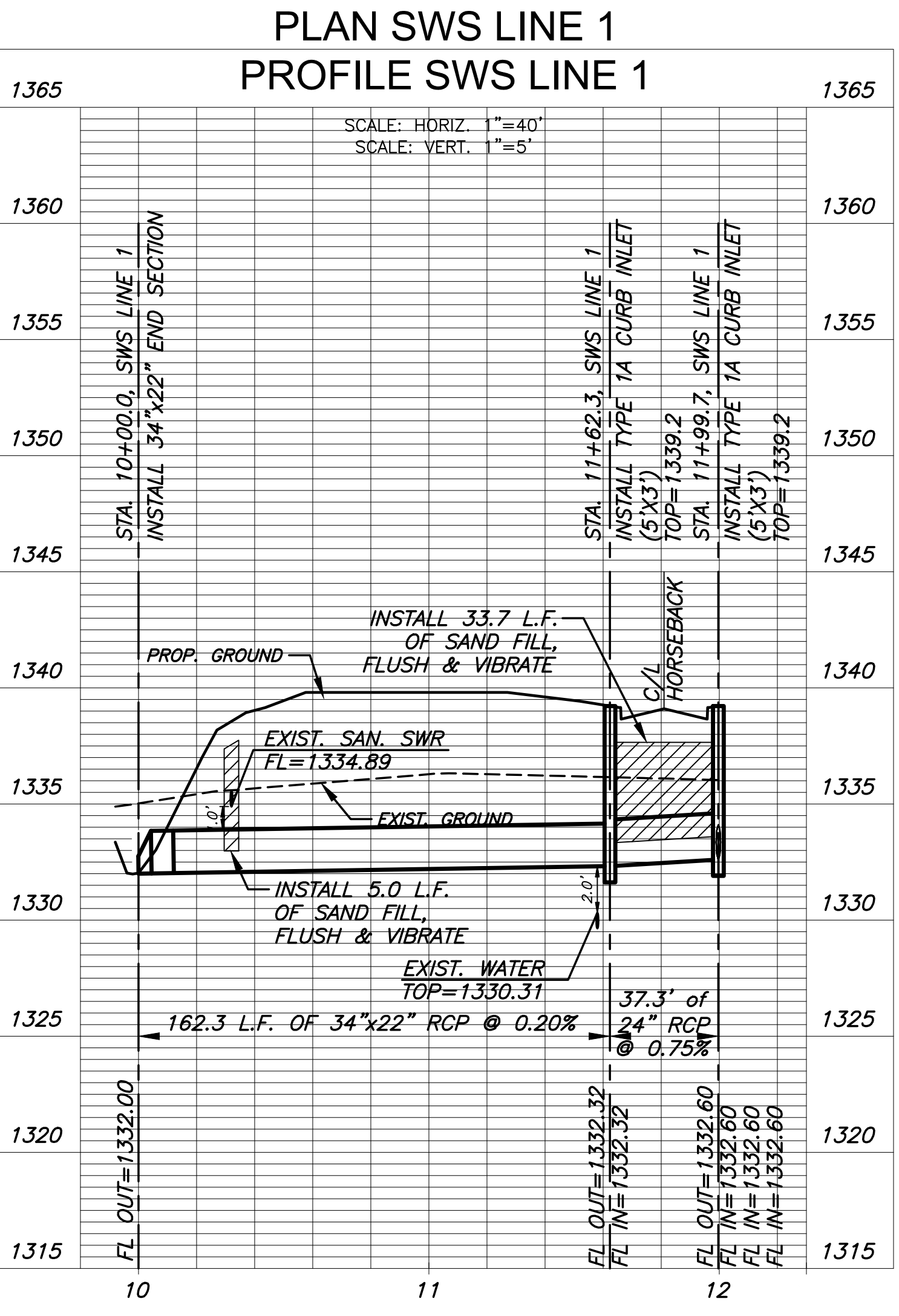
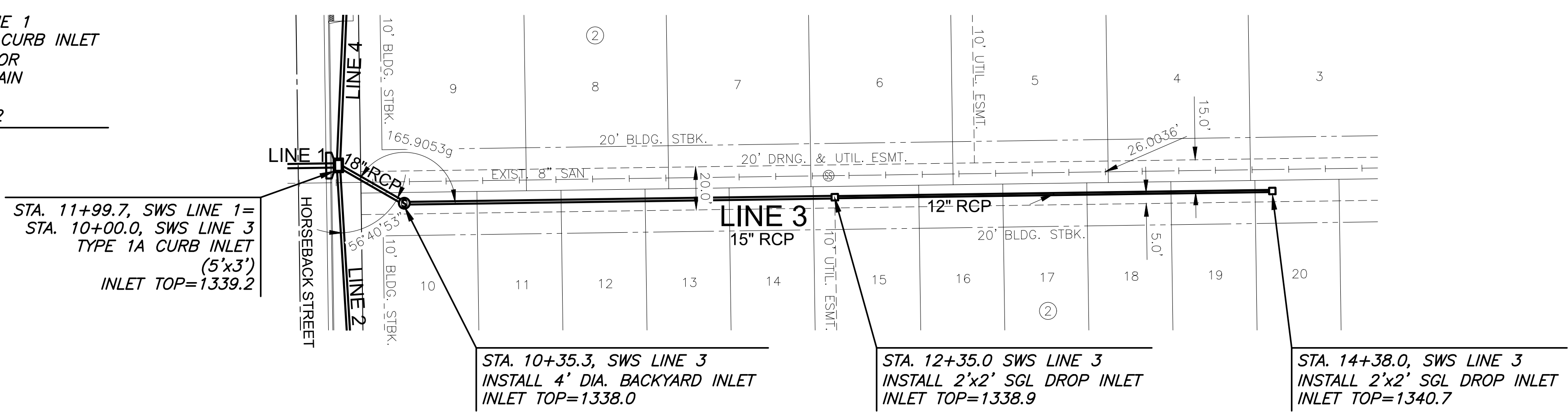
NO.	REVISION	DATE
SHEET NO. 07 OF 16		

PLOTED: Thursday, January 12, 2023 @ 08:32AM

J:\PROJECTS\2022\01\10706_SCHROEDER_127TH AND PAWNEE\00 20706 CAD\SHS\05 CIVIL\SWS\20706_SWS_LINES 1 & 3.DWG



END SECTION NOTE:
COST OF END SECTIONS SHALL BE SUBSIDIARY TO COST OF PIPE



NOTE:
CONTRACTOR TO VERIFY THE DEPTH AND LOCATION OF EXISTING UTILITIES PRIOR TO CONSTRUCTION.