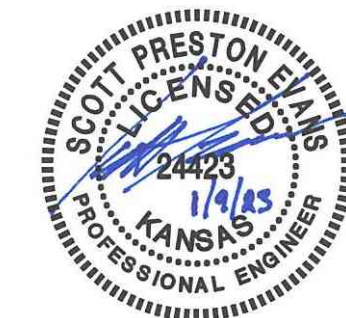


EVERY ATTEMPT HAS BEEN MADE TO INSURE ALL COORDINATE VALUES SHOWN ARE AN ACCURATE AND TRUE REPRESENTATION OF THE CURRENT PLANS. ALL VALUES ARE TO BE CONFIRMED WITH THE FINAL SIGNED PLAN SET BEFORE USE.



WATER DISTRIBUTION PLANS FOR
COURTYARDS AT THE MOORINGS
 COLLECTOR PHASE

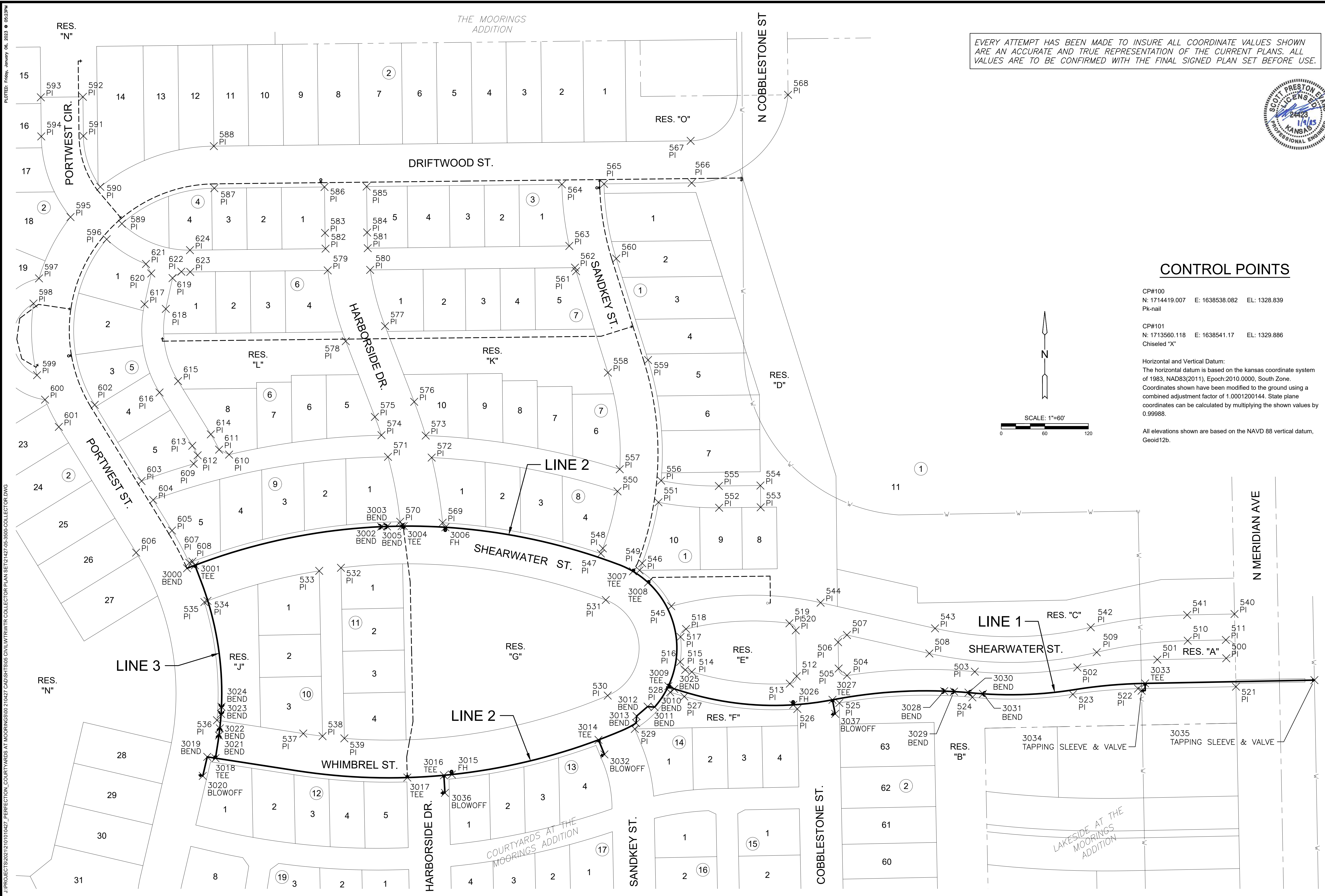
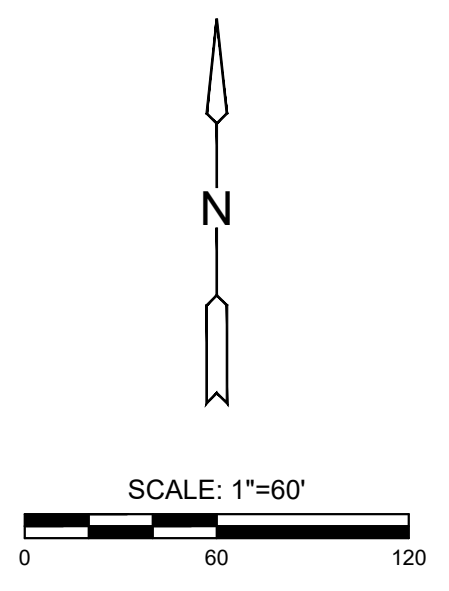
CONTROL POINTS

CP#100
 N: 1714419.007 E: 1638538.082 EL: 1328.839
 Pk-nail

CP#101
 N: 1713560.118 E: 1638541.17 EL: 1329.886
 Chiseled "X"

Horizontal and Vertical Datum:
 The horizontal datum is based on the Kansas coordinate system of 1983, NAD83(2011), Epoch:2010.0000, South Zone. Coordinates shown have been modified to the ground using a combined adjustment factor of 1.0001200144. State plane coordinates can be calculated by multiplying the shown values by 0.99988.

All elevations shown are based on the NAVD 88 vertical datum, Geoid12b.



PLOTTED: Friday, January 06, 2023 @ 08:23PM
 J:\PROJECTS\2022\12\10\10427_PERFECTION_COURTYARDS AT THE MOORINGS\DWG\10427 CAD\SHS\505 CIVIL\WTR COLLECTOR PLAN SET\21427-66-5000-COLLECTOR.DWG

©2023 MKEC Engineering All Rights Reserved www.mkec.com
 These drawings and their contents, including, but not limited to, all concepts, designs, & ideas are the exclusive property of MKEC Engineering (MKEC), and may not be used or reproduced in any way without the express consent of MKEC.

BUBBLE MAP

PROJECT NO.	448-2022-024799	
DATE	JAN 2023	
SCALE	1" = 60'	
DESIGNED	DRAWN	CHECKED
DFL	JWC	SPE
NO.	REVISION	DATE

SHEET NO.
08 OF 18