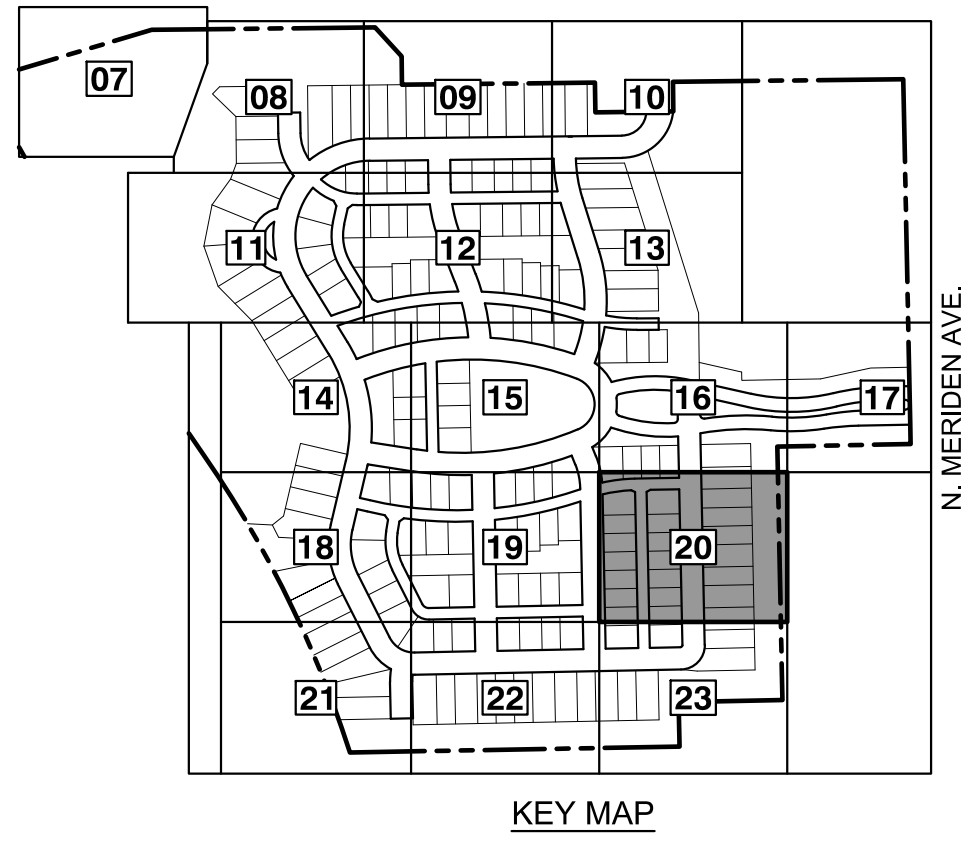
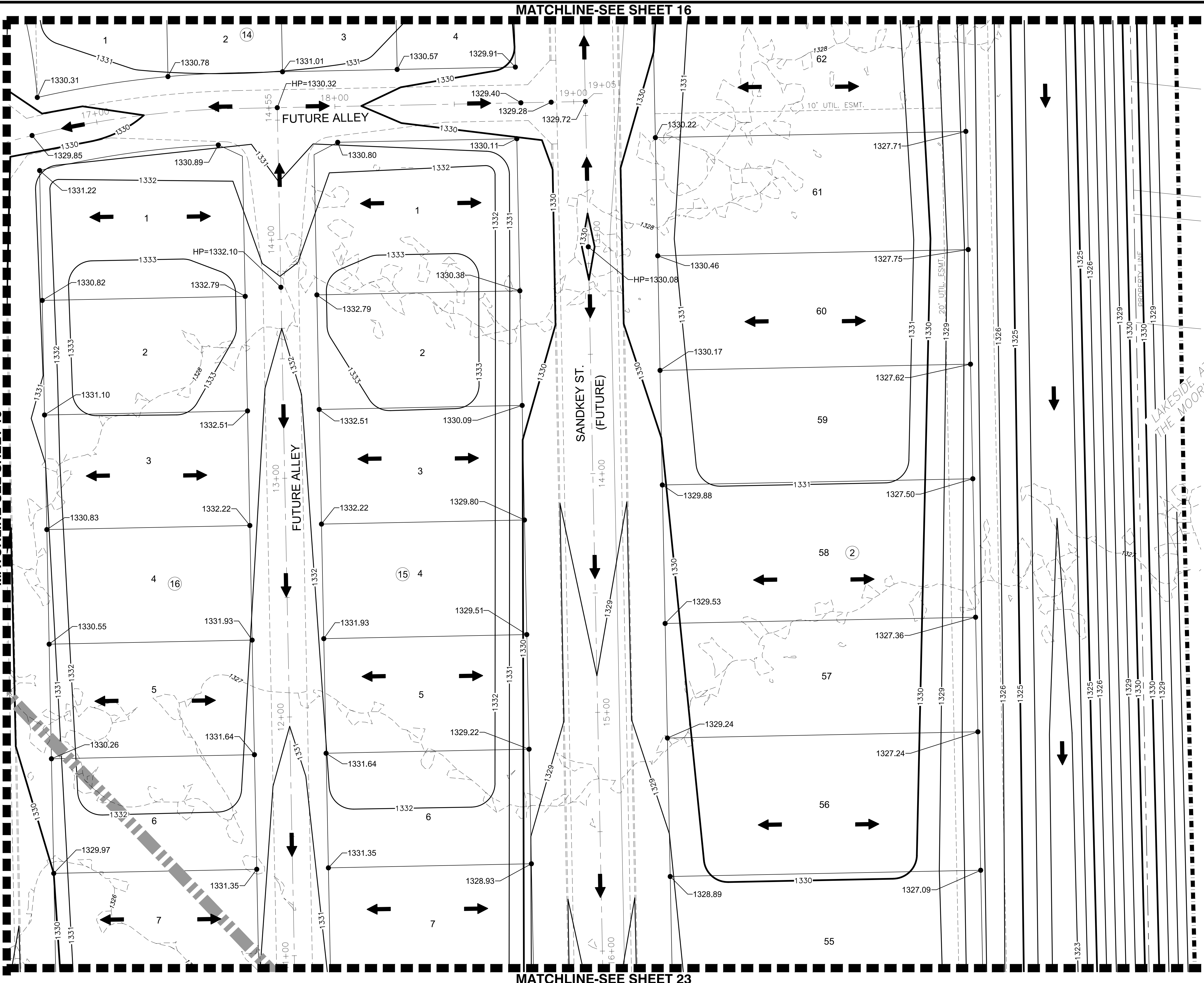
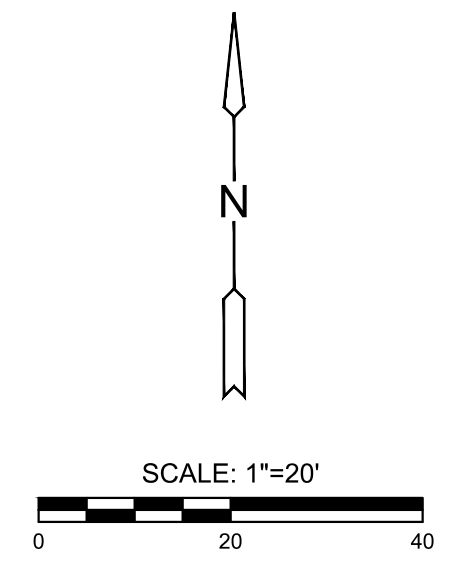


J:\PROJECTS\2021\1010427_PERFECTION_COURTYARDS AT MOORINGS\DWG\210427 CAD\SH1\121427-05-1215.DWG
 PLOTTED: Monday, January 09, 2023 @ 08:35AM



NOTES:
VERTICAL DATUM USED IS NAVD88.

- LEGEND**
- EXISTING CONTOUR
 - PROPOSED CONTOUR
 - PROP. WATERLINE
 - PROP. STORMWATER SEWER
 - PROP. SANITARY SEWER
 - EXIST. STORMWATER SEWER
 - EXIST. SANITARY SEWER
 - EXIST. UNDERGROUND TELEPHONE
 - EXIST. UNDERGROUND ELECTRICAL
 - EXIST. OVERHEAD ELECTRICAL
 - LIMITS OF GRADING
 - SPOT ELEVATIONS
 - TEMPORARY DRAINAGE SWALE



MASS GRADING PLANS FOR
COURTYARDS AT THE MOORINGS
 WICHITA, KS

©2023
 MKEC Engineering
 All Rights Reserved
 www.mkec.com
 These drawings and their contents, including, but not limited to, all concepts, designs, & ideas are the exclusive property of MKEC Engineering (MKEC), and may not be used or reproduced in any way without the express consent of MKEC.

GRADING PLAN

PROJECT NO.	458-2022-085511	
DATE	JAN. 2023	
SCALE	1" = 20'	
DESIGNED	DRAWN	CHECKED
DML	C-JL	SPE
NO.	REVISION	DATE
SHEET NO.		
20 OF 43		