

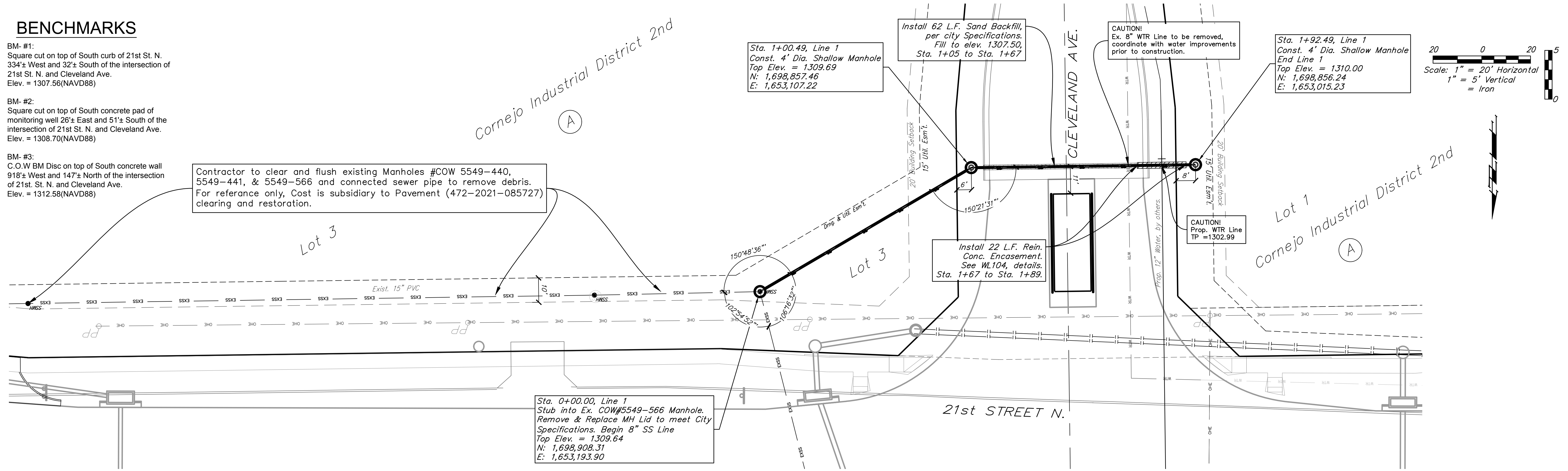
BENCHMARKS

BM- #1:
Square cut on top of South curb of 21st St. N.
334'± West and 32'± South of the intersection of
21st St. N. and Cleveland Ave.
Elev. = 1307.56(NAVD88)

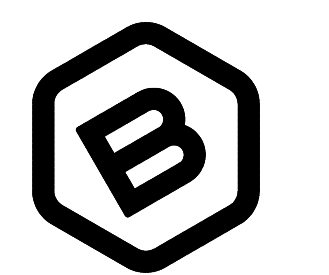
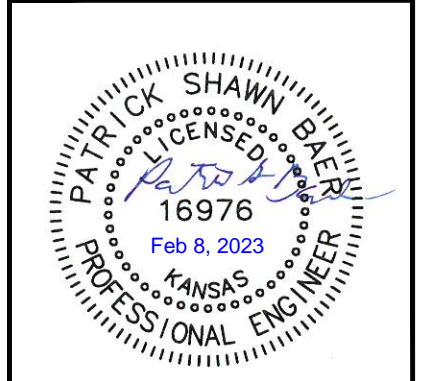
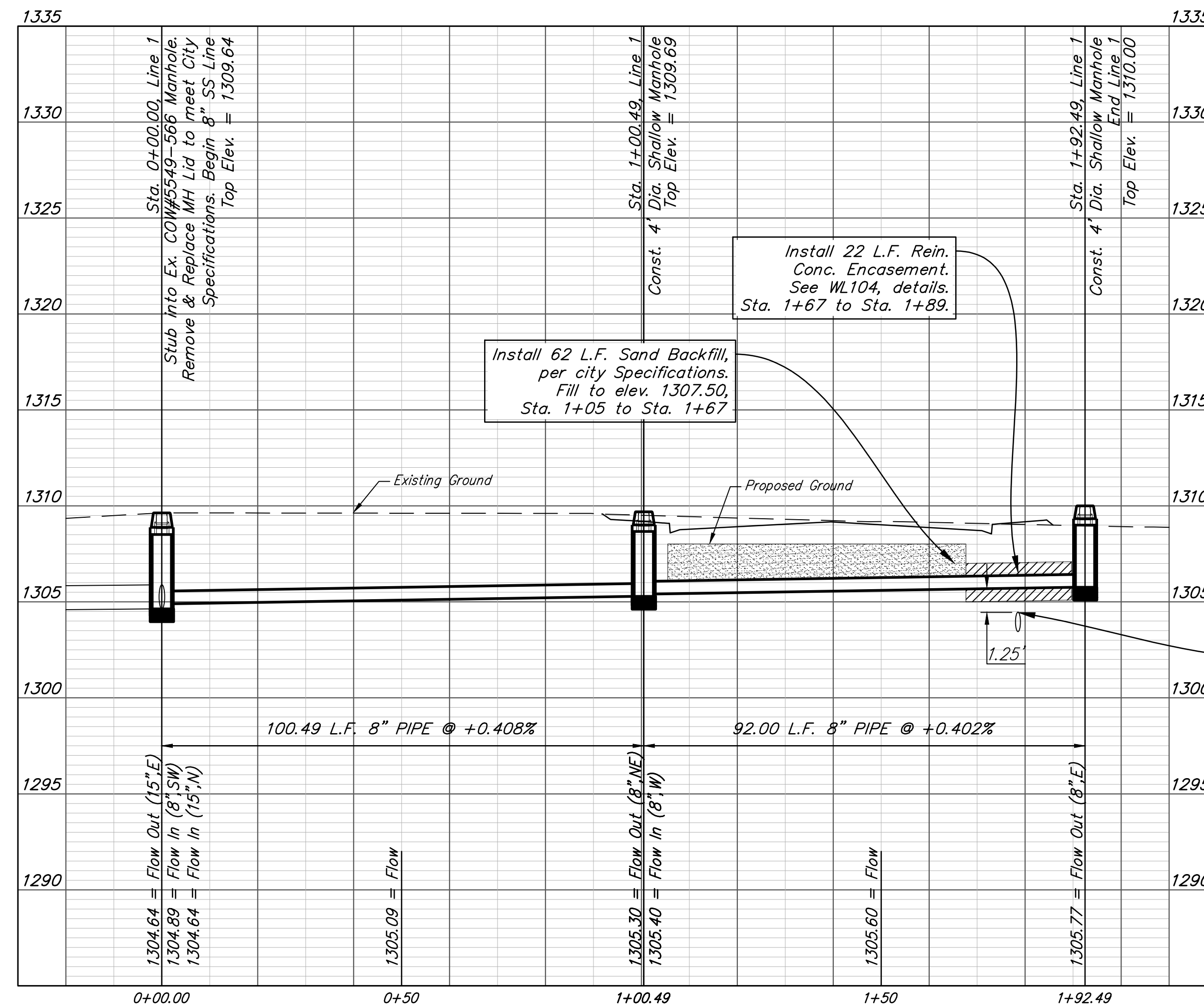
BM- #2:
Square cut on top of South concrete pad of
monitoring well 26'± East and 51'± South of the
intersection of 21st St. N. and Cleveland Ave.
Elev. = 1308.70(NAVD88)

BM- #3:
C.O.W BM Disc on top of South concrete wall
918'± West and 147'± North of the intersection
of 21st St. N. and Cleveland Ave.
Elev. = 1312.58(NAVD88)

Contractor to clear and flush existing Manholes #COW 5549-440,
5549-441, & 5549-566 and connected sewer pipe to remove debris.
For reference only, Cost is subsidiary to Pavement (472-2021-085727)
clearing and restoration.



LINE 1



BAUGHMAN COMPANY

315 Ellis St.
Wichita, KS 67211
316-262-7271
BaughmanCo.com

Cornejo Industrial District
2nd Addition
SS Line 1

Sanitary Sewer
Improvements

PROJECT NUMBER:
468-2021-017263

DESIGN: PSB DRAWN: JA
DATE: February 8, 2023

SHEET **2** OF **14**