

PRIVATE STORM WATER SEWER IMPROVEMENTS

TO SERVE

LOT 3 AND PART OF LOT 4, BLOCK 1
21ST STREET KIDS AND FAMILY IMPOWERMENT

BOYS AND GIRLS CLUB

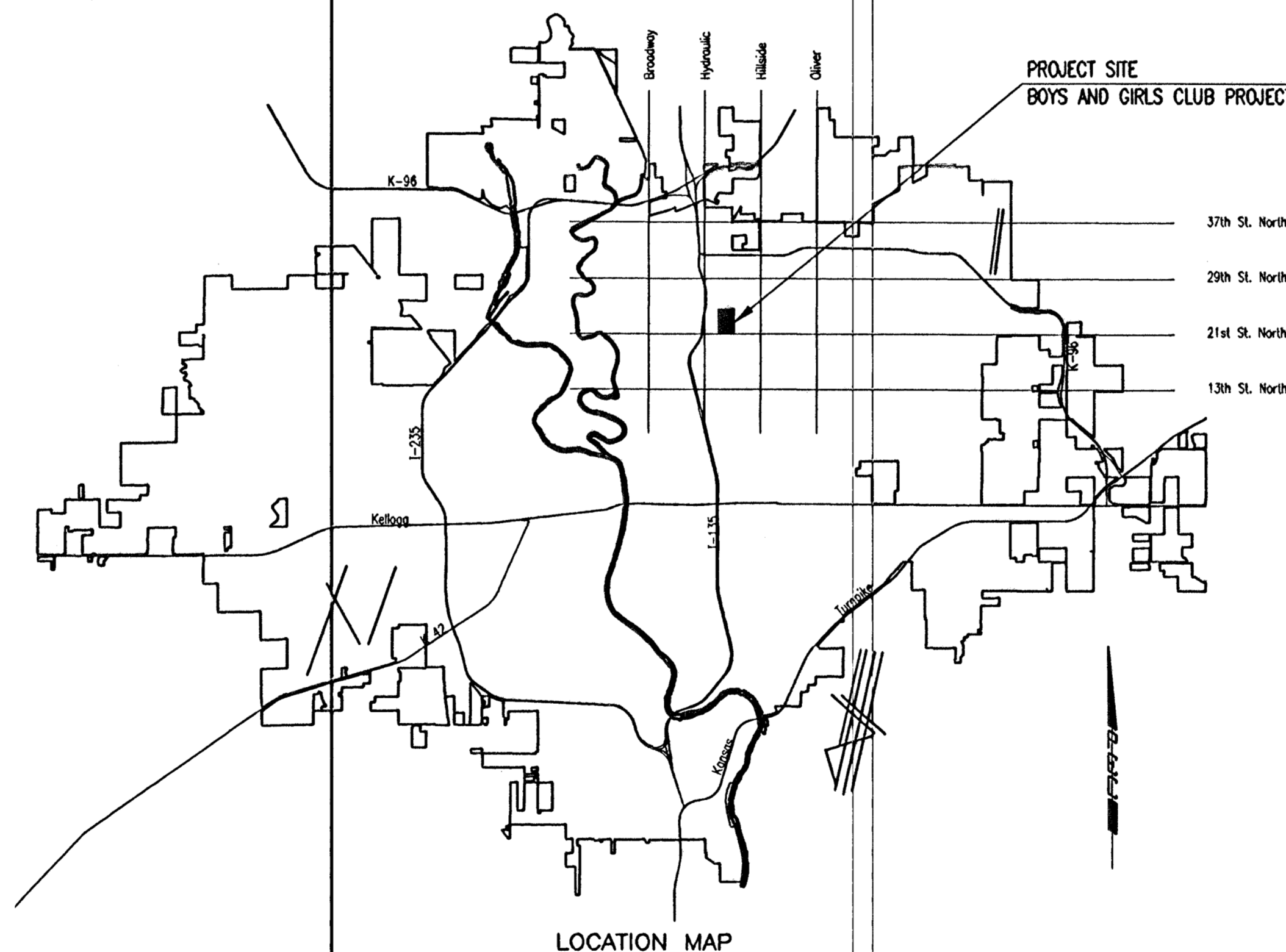
CITY OF WICHITA PRIVATE PROJECT NO. 1653 PPS (607861)

CITY OF WICHITA, KANSAS

JAMES L. ARMOUR, P.E.-CITY ENGINEER

INDEX OF SHEETS

CV3.1	TITLE SHEET
CV3.2	KEY MAP
CV3.3-CV3.4	SWS LINE NO. 1
CV3.5	SWS LINE NO. 1A & 1B
CV3.6-3.7	SWS LINE NO. 2
CV3.8	SWS LINE NO. 2A
CV3.9	SWS LINE NO. 2B AND 2C
CV3.10	STANDARD AREA INLET DETAILS
CV3.11	STANDARD TYPE 1 CURB INLET DETAILS
CV3.12	SHALLOW TYPE "P" MANHOLE DETAILS
CV3.13	MANHOLE FRAME AND COVER
CV4.1	PLAT
CV4.2	DRY DETENTION PLAN
CV5.2-CV5.5	SOIL EROSION BMP DETAILS



APPROVED AS NOTED
By CITY ENGINEER OF WICHITA

Sanitary Sewers _____
Storm Sewers JA 4-13-06
Driveway Approaches _____
Paving _____

NOTE TO CONTRACTOR

INSPECTION AND TESTING FOR THIS PROJECT IS TO BE PROVIDED BY A LICENSED CONSULTING ENGINEERING FIRM CONTRACTED BY THE OWNER/DEVELOPER. SAID INSPECTION TO BE IN ACCORDANCE WITH THE CITY OF WICHITA STANDARD CONSTRUCTION ENGINEERING PRACTICES AND CERTIFIED BY A LICENSED PROFESSIONAL ENGINEER. NO WORK SHALL BE PERFORMED IN DEDICATED EASEMENTS OR PUBLIC RIGHT-OF-WAY BY THE CONTRACTOR UNTIL SUCH INSPECTION IS ARRANGED FOR AND REQUIRED BONDS HAVE BEEN SUBMITTED TO AND APPROVED BY THE CITY. NOR SHALL ANY WORK BE COMMENCED IN DEDICATED EASEMENTS OR PUBLIC RIGHT-OF-WAY WITHOUT WRITTEN AUTHORIZATION BY THE CITY ENGINEER. IMPROVEMENTS PERFORMED UNDER THIS PROJECT SHALL NOT BE ACCEPTED BY THE CITY UNTIL ALL APPLICABLE DOCUMENTATION HAS BEEN SUBMITTED TO THE CITY ENGINEER. THIS MAY INCLUDE: RECORD DRAWINGS, INSPECTION LOGS, TEST DOCUMENTATION, TV TAPES, AND A CERTIFICATE OF COMPLETION. THE ABOVE SHALL BE PERFORMED BY THE CONSULTING FIRM CONTRACTED TO INSPECT THIS PROJECT.

AS-BUILT
8/13/06
Date: K.E. Miller
[Signature]



MARCH 2006

PLANS PREPARED BY

PROFESSIONAL ENGINEERING CONSULTANTS, P.A.

ENGINEERS

WICHITA, KANSAS

REVISD PER CITY COMMENTS 4-17-06

Saved 04-12-2006 9:38:48 AM by SWM
 Plot Scale: 1" = 04'-12" 2006 9:42:32 AM by SWM
 C:\Users\jherberich\Documents\1653 PPS\1653 PPS.dwg

GENERAL NOTES

EXISTING UTILITIES AND THEIR LOCATION, AS SHOWN ON THE PLANS, REPRESENT THE BEST INFORMATION OBTAINABLE FOR DESIGN. LOCATION INFORMATION HAS BEEN OBTAINED FROM THE VARIOUS UTILITY COMPANIES AND IS EITHER FROM COMPANY RECORD DRAWINGS OR COMPANY PROVIDED FIELD LOCATIONS. THE CONTRACTOR WILL BE REQUIRED TO WORK AROUND EXISTING UTILITIES WITHIN THE RIGHT-OF-WAY WHICH DO NOT CONFLICT WITH PROPOSED CONSTRUCTION.

TREES AND SHRUBS IN PUBLIC RIGHT-OF-WAY WHICH ARE IN DIRECT CONFLICT WITH PROPOSED NEW CONSTRUCTION SHALL BE REMOVED BY THE CONTRACTOR WITH THE ENGINEER'S APPROVAL. TREES AND SHRUBS WHICH ARE NOT IN DIRECT CONFLICT WITH PROPOSED NEW CONSTRUCTION SHALL BE SAVED AND PROTECTED FROM DAMAGE.

RUBBLE FROM THE REMOVAL OF MISCELLANEOUS STRUCTURES SHALL BE DISPOSED OFF SITE BY THE CONTRACTOR.

ALL DISPOSAL SITES MUST BE APPROVED BY THE KANSAS DEPARTMENT OF HEALTH AND ENVIRONMENT. MATERIAL EITHER STOCKPILED OR DISPOSED OF IN A FLOOD PLAIN WOULD REQUIRE A KANSAS STATE BOARD OF AGRICULTURE PERMIT. ANY MATERIAL DUMPED IN WATERS OF THE UNITED STATES OR WETLANDS IS SUBJECT TO U.S. CORPS OF ENGINEERS PERMITTING REGULATIONS. ANY MATERIAL BURIED OR STOCKPILED BEYOND APPROVED CONSTRUCTION LIMITS WOULD REQUIRE ADDITIONAL ARCHEOLOGICAL INVESTIGATIONS UNLESS BURIED IN A PREVIOUSLY APPROVED BORROW LOCATION.

CONTRACTOR SHALL PROVIDE A MINIMUM SEVENTY-TWO (72) HOUR ADVANCE NOTICE (EXCLUDING WEEKENDS AND HOLIDAYS) PRIOR TO BEGINNING ANY EXCAVATION. KANSAS ONE-CALL SYSTEM, A UTILITY LOCATION SERVICE, AT (316) 687-2470 TO REQUEST THE FOLLOWING UTILITY COMPANIES TO LOCATE ALL EXISTING LINES WITHIN THE PROJECT AREA: K.G.S. GAS, WESTAR ENERGY, SBC, COX COMMUNICATIONS, CITY OF WICHITA SEWER MAINTENANCE AND CITY OF WICHITA WATER DEPARTMENT.

THE CONTRACTOR SHALL BE RESPONSIBLE FOR PRESERVING PROPERTY IRONS. THE CONTRACTOR WILL BE REQUIRED TO RE-ESTABLISH ANY PROPERTY IRONS WHICH ARE DAMAGED OR DESTROYED BY HIS CONSTRUCTION OPERATIONS. SUCH IRONS SHALL BE RE-ESTABLISHED BY A LICENSED LAND SURVEYOR IN ACCORDANCE WITH STATE LAWS.

ALL AREAS DISTURBED DURING CONSTRUCTION SHALL BE SEEDED, FERTILIZED, AND MULCHED ACCORDING TO CITY OF WICHITA STANDARDS AND SPECIFICATIONS.

ALL CONSTRUCTION MATERIALS AND PROCEDURES SHALL BE IN ACCORDANCE WITH THE CITY OF WICHITA STANDARDS AND SPECIFICATIONS FOR STORM SEWER CONSTRUCTION.

ALL LAWN/TURF AREAS DISTURBED BY CONSTRUCTION OF THE PROPOSED IMPROVEMENTS SHALL BE SEEDED PER THE SPECIFICATIONS AND RESTORED WITH THE SAME GRASS AS EXISTING. RESTORATION OF DISTURBED AREAS SHALL INCLUDE, BUT NOT BE LIMITED TO, TOP SOIL PREPARATION, SEEDING, MULCH, AND/OR RESEEDING. ALL SEEDING WORK SHALL BE IN ACCORDANCE WITH THE CITY OF WICHITA STANDARD SPECIFICATIONS AND THE CITY OF WICHITA ADMINISTRATIVE REGULATION NO. AR78 WHICH GOVERNS CLEANUP AND RESTORATION OR REPLACEMENT FOLLOWING CONSTRUCTION.

THE CONTRACTOR SHALL GIVE ALL PROPERTY OWNERS AND/OR TENANTS OF DEVELOPED PROPERTY ADJACENT TO THE CONSTRUCTION OF THIS PROJECT A MINIMUM OF TEN (10) DAYS ADVANCE NOTICE PRIOR TO START OF CONSTRUCTION.

THE WATER DEPARTMENT SHALL FIELD LOCATE WATER VALVES ONE TIME DURING CONSTRUCTION WHEN REQUESTED BY THE CONTRACTOR. IT SHALL BE THE CONTRACTOR'S RESPONSIBILITY TO PRESERVE SUCH FIELD LOCATIONS DURING THE CONSTRUCTION PROCESS. WATER VALVES, WATER VALVE BOXES OR FIRE HYDRANTS DAMAGED DURING CONSTRUCTION SHALL BE REPAIRED BY THE CONTRACTOR AT HIS OWN EXPENSE.

CUTS MADE IN PAVED SURFACES ON PUBLIC PROPERTY WILL BE REPAIRED BY THE CITY'S CONTRACTOR AND CHARGED AGAINST THE CONTRACTOR. UNIT REPAIR PRICES ARE AVAILABLE FROM THE CITY AT 288-4418. A SURCHARGE MAY BE APPLICABLE: CALL 288-4418 FOR DETAILS. REPAIR COSTS TO BE PAID PRIOR TO RELEASE OF WATER SERVICE IF WATER SERVICE IS AFFECTED.

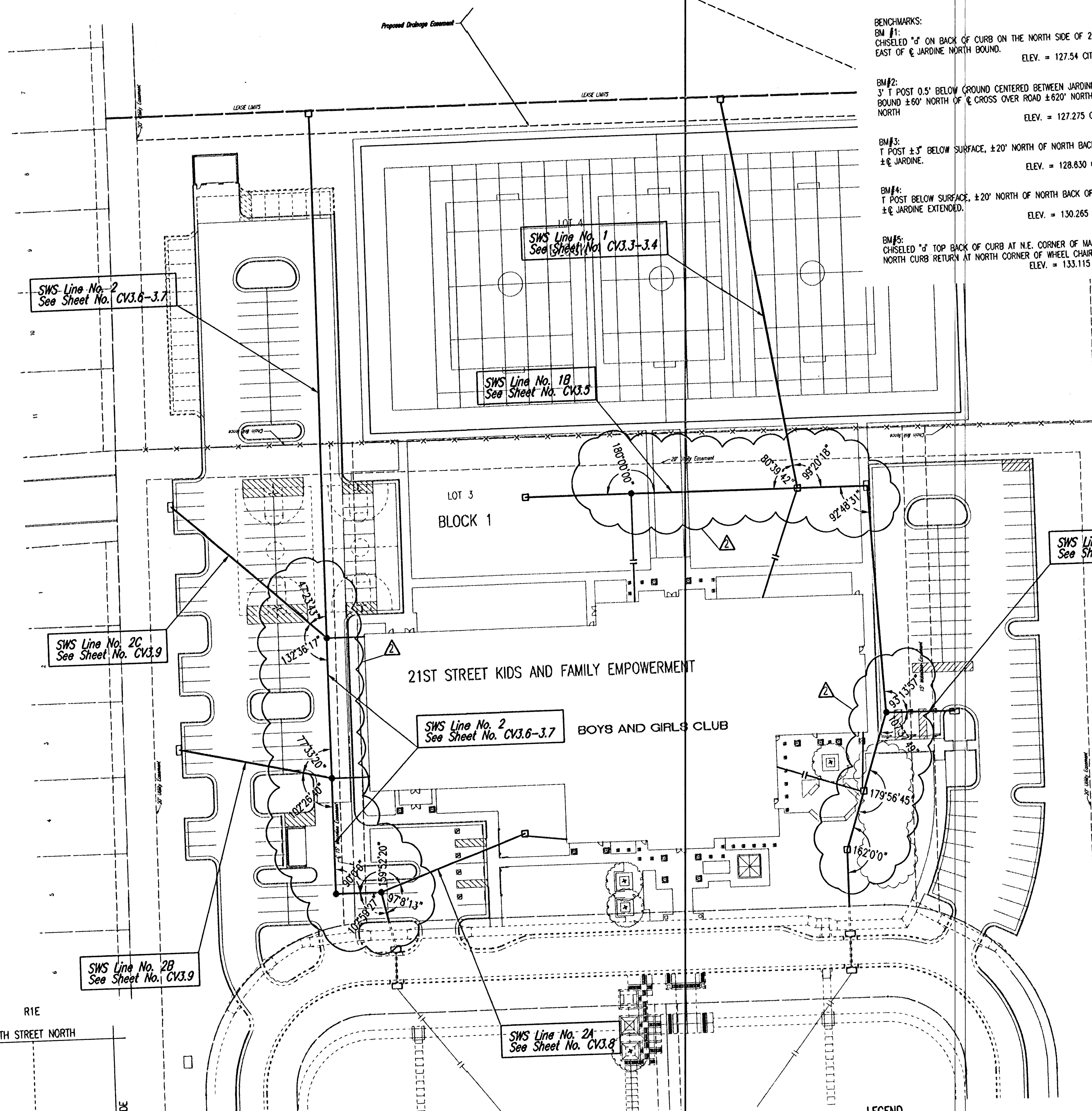
EXCESS EXCAVATED MATERIAL AND EXCESS TOPSOIL SHALL BE REMOVED OFF SITE UNLESS OTHERWISE DIRECTED BY OWNER.

ALL MANHOLE AND INLET TOPS SHALL BE ADJUSTED TO MATCH FLUSH WITH FINAL GRADES.

CONTROL POINTS: SEE SHEET NO. CV4.1 FOR PLAN

SCALE: 1" = 40'

- BENCHMARKS:**
- BM #1: CHISELED "d" ON BACK OF CURB ON THE NORTH SIDE OF 21ST ST. N. ±50' EAST OF E. JARDINE NORTH BOUND. ELEV. = 127.54 CITY DATUM
 - BM #2: 3" T POST 0.5' BELOW GROUND CENTERED BETWEEN JARDINE NORTH AND SOUTH BOUND ±60' NORTH OF E. CROSS OVER ROAD ±620' NORTH OF E. 21ST ST. NORTH ELEV. = 127.275 CITY DATUM
 - BM #3: T POST ±3" BELOW SURFACE, ±20' NORTH OF NORTH BACK OF CURB 23RD ST. ±E JARDINE. ELEV. = 128.630 CITY DATUM
 - BM #4: T POST BELOW SURFACE, ±20' NORTH OF NORTH BACK OF CURB OF 24TH ST. ±E JARDINE EXTENDED. ELEV. = 130.265 CITY DATUM
 - BM #5: CHISELED "d" TOP BACK OF CURB AT N.E. CORNER OF MADISON & 25TH ST. N. NORTH CURB RETURN AT NORTH CORNER OF WHEEL CHAIR RAMP. ELEV. = 133.115 CITY DATUM



SWS Line No. 2
See Sheet No. CV3.6-3.7

SWS Line No. 1
See Sheet No. CV3.3-3.4

SWS Line No. 1B
See Sheet No. CV3.5

SWS Line No. 1A
See Sheet No. CV3.5

SWS Line No. 2C
See Sheet No. CV3.9

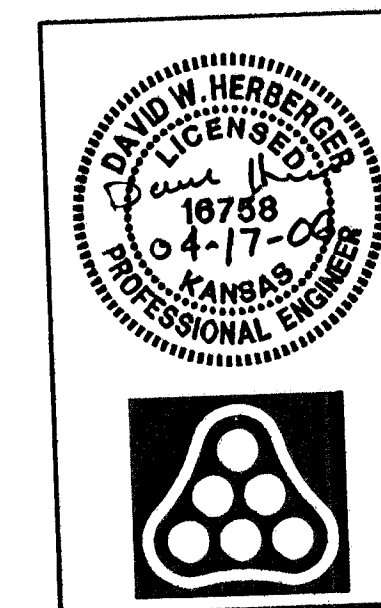
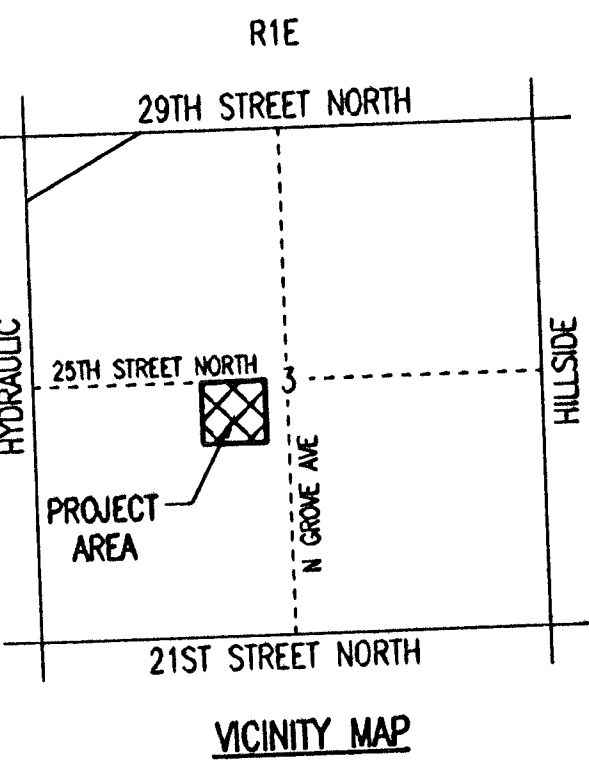
SWS Line No. 2
See Sheet No. CV3.6-3.7

SWS Line No. 2B
See Sheet No. CV3.9

SWS Line No. 2A
See Sheet No. CV3.8

LEGEND

- EXISTING STORM SEWER
- PROPOSED STORM SEWER
- PROPOSED STORM SEWER w/MANHOLE
- PROPOSED STORM SEWER AREA INLET
- EXISTING STORM SEWER AREA INLET
- PROPOSED RAIN LEADER
- EXISTING STORM SEWER CURB INLET
- PROPOSED STORM SEWER CURB INLET



DESIGNED BY	DWH	JOB NO.	05664	SHEET	CV3.2
DRAWN BY	SAW	DATE	February 2006		
CITY OF WICHITA PROJECT NO. 1653 PPS (607861) Professional Engineering Consultants, P.A. 303 S. TOPEKA • WICHITA, KANSAS 67202 316-262-2691 • FAX 316-262-3003					

Saved: 04-12-2006 9:41:00 AM by SAW
 Plot Scale: 1"=40'-04-12-2006 9:41:21 AM by SAW
 G:\2005\05664\Private Plans\CVS\05664-03.2-KCTMAP

N-6,709.8972, E-4,267.9549
Sta. 10+18.9, SWS Line No. 2
Remove temporary plug and install
REP-coupling.
E Out=124.24
Install 20.0 L.F. 12" RCP (NW)
See Detail Sheet No. CV3.8

SWS Line No. 2B
See Sheet CV3.9

N-6,805.2305, E-4,261.6107
Sta. 11+45.5, SWS Line No. 2=
Sta. 18+00.0, SWS Line No. 2B
Const. Shallow Type 'P' Manhole
Diameter = 4'-0"
Top Elev.=130.45
Install 92.0 L.F. 12" RCP (N)
Install 102.1 L.F. 12" RCP (NW)
See Sheet No. CV3.12

SWS Line No. 2C
See Sheet CV3.9

CAUTION!!!
Proposes Gas Service

N-6,691.3967, E-4,271.7231
Sta. 10+00.0, SWS Line No. 2
Existing Curb Inlet
Top Elev.=130.06
E Out=124.17

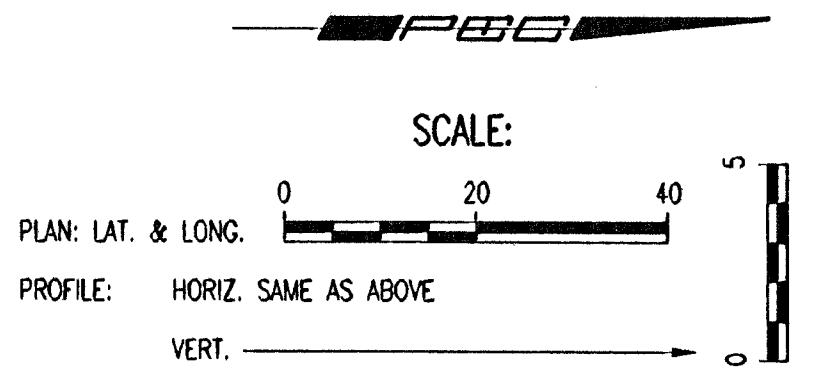
N-6,729.3853, E-4,263.4590
Sta. 10+38.9, SWS Line No. 2=
Sta. 16+00.0 SWS Line No. 2A
Const. Shallow Type 'P' Manhole
Diameter = 4'-0"
Top Elev.=130.45
Install 30.6 L.F. 12" RCP (W)
Install 102.0 L.F. 12" RCP (NE)
See Sheet No. CV3.12

SWS Line No. 2A
See Sheet CV3.8

N-6,729.3853, E-4,233.4590
Sta. 10+69.5, SWS Line No. 2
Const. Shallow Type 'P' Manhole
Diameter = 4'-0"
Top Elev.=130.31
Install 76.0 L.F. 12" RCP (N)
See Sheet No. CV3.12

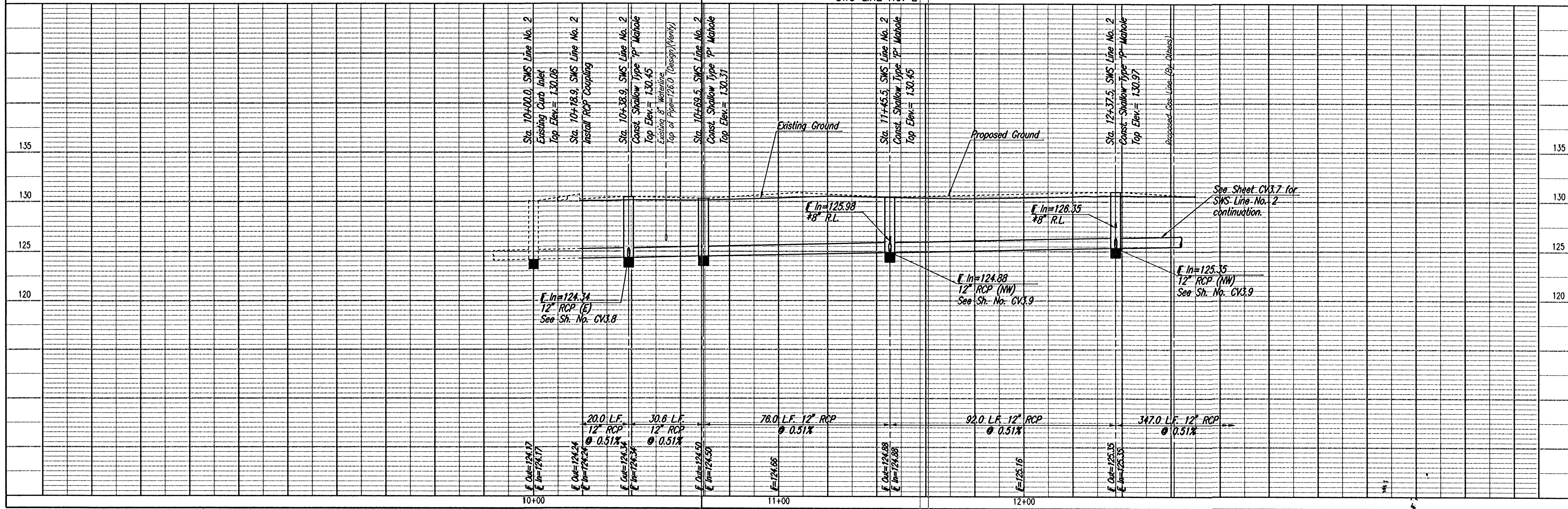
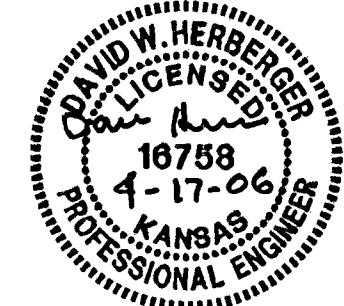
N-6,888.2305, E-4,261.6107
Sta. 12+37.5, SWS Line No. 2=
Sta. 20+00.0, SWS Line No. 2C
Const. Shallow Type 'P' Manhole
Diameter = 4'-0"
Top Elev.=130.97
Install 347.0 L.F. 12" RCP (N)
Install 134.7 L.F. 12" RCP (NW)
See Sheet No. CV3.12

* ALL RAIN LEADERS AND SWS PIPE LESS THAN 12" SHALL
BE UNDER THE OFFICE OF CENTRAL INSPECTION'S PERMIT
AND NOT PART OF CITY OF WICHITA STORM SEWER PROJECT.



1 Connect to Building Rainleader.
6" RL FL= 29.75
8" RL FL= 29.58
See Mechanical Sheets.

2 Construct PVC Rainleader
Per City Requirements



BOYS AND GIRLS CLUB
SWS LINE NO. 2
STA. 10+00.0 TO STA. 12+37.5

Professional Engineering Consultants, P.A.
303 S. TOPICKA • WICHITA, KANSAS 67202
316-262-2691 • FAX 316-262-3000

Designed by: DMH
Drawn by: SWW

Job No.: 05664
Date: FEBRUARY 2006

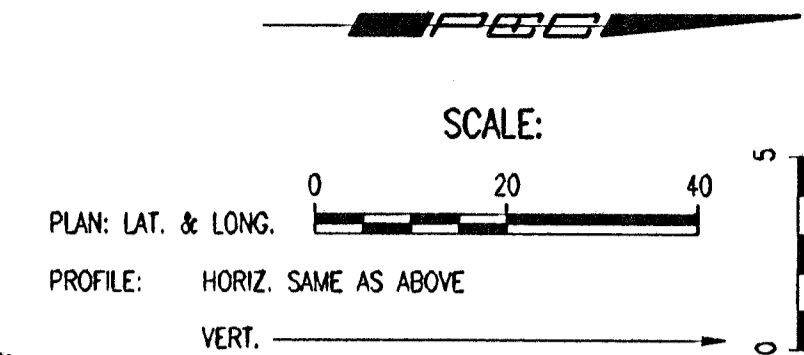
City of Wichita Private Project No. 1653 PPS (607861)

Sheet CV3.6

N-6,888.2305, E-4,261.6107
 Sta. 12+37.5, SWS Line No. 2=
 Sta. 20+00.0, SWS Line No. 2C
 Shallow Type "P" Manhole
 Top Elev.=130.97

CAUTION!!!
 Gas Service

CAUTION!!!
 8" Sanitary Sewer



BOYS & GIRLS CLUB

LOT 3 BLOCK

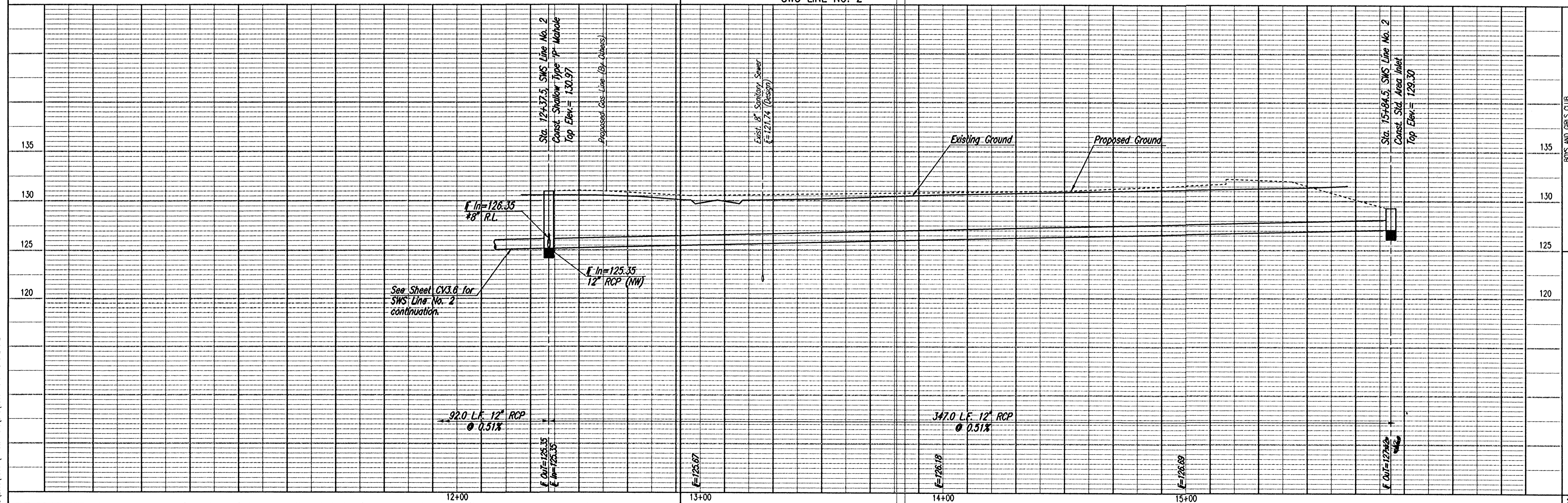
21ST STREET KIDS AND FAMILY EMPOWERMENT

21ST STREET KIDS AND FAMILY EMPOWERMENT

SWS LINE NO. 2

N-7,244.3972, E-4,233.4590
 Sta. 15+84.5, SWS Line No. 2
 Const. Std. Area Inlet
 L=5'-0", W=3'-0"
 Top Elev.=129.30
 See Sheet No. CV3.10.

* ALL RAIN LEADERS AND SWS PIPE LESS THAN 12" SHALL
 BE UNDER THE OFFICE OF CENTRAL INSPECTION'S PERMIT
 AND NOT PART OF CITY OF WICHITA STORM SEWER PROJECT.



BOYS AND GIRLS CLUB
 SWS LINE NO. 2
 STA 12+37.5 TO STA. 15+86.0

Professional Engineering Consultants, P.A.
 303 S. TORRECA - WICHITA, KANSAS 67202
 316-262-2691 • FAX 316-262-3003

Job No. 05664
 Date FEBRUARY 2006

Designed by DMH
 Drawn by SW

Sheet CV3.7

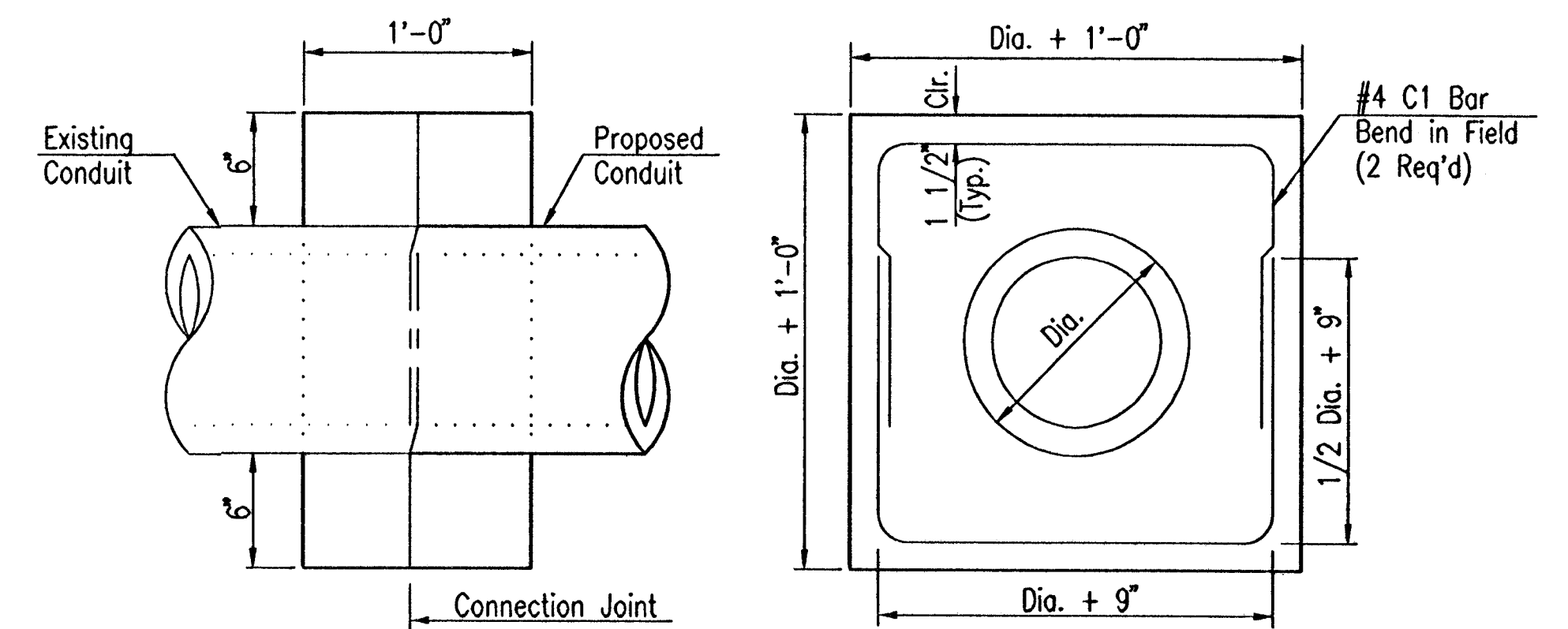
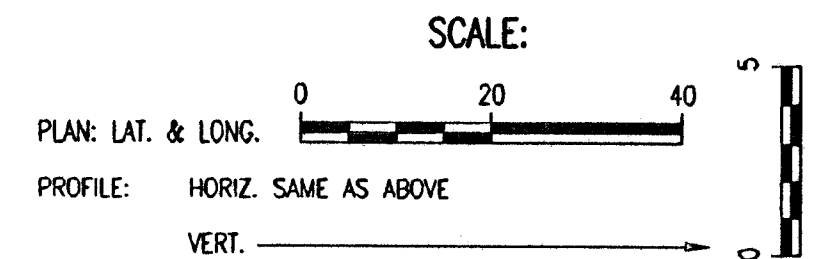
Sheet CV3.7 of 2006, 4:16:18 PM by JWH
 Plot Scale 1:20, 04-10-2006, 4:47:00 PM by SWH
 C:\2005\05664\Private Plans\SWS\05664-CV3.7-SWS Line 2

SWS Line No. 2
See Sh. No. CV3.6

N-6,729.3853, E-4,263.4590
Sta. 16+00.0, SWS Line No. 2A=
Sta. 10+38.9 SWS Line No. 2
Shallow Type 'P' Manhole
Top Elev.=130.45

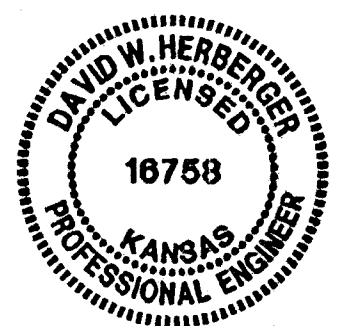
N-6,764.4852, E-4,359.2296
Sta. 17+02.0, SWS Line No. 2A
Const. Std. Area Inlet
L=5'-0", W=3'-0"
Top Elev.=130.80
See Sheet No. CV3.12

- ① Connect to Building Rainleader.
6" RL FL= 29.75
8" RL FL= 29.58
See Mechanical Sheets.
- ② Construct PVC Rainleader
Per City Requirements

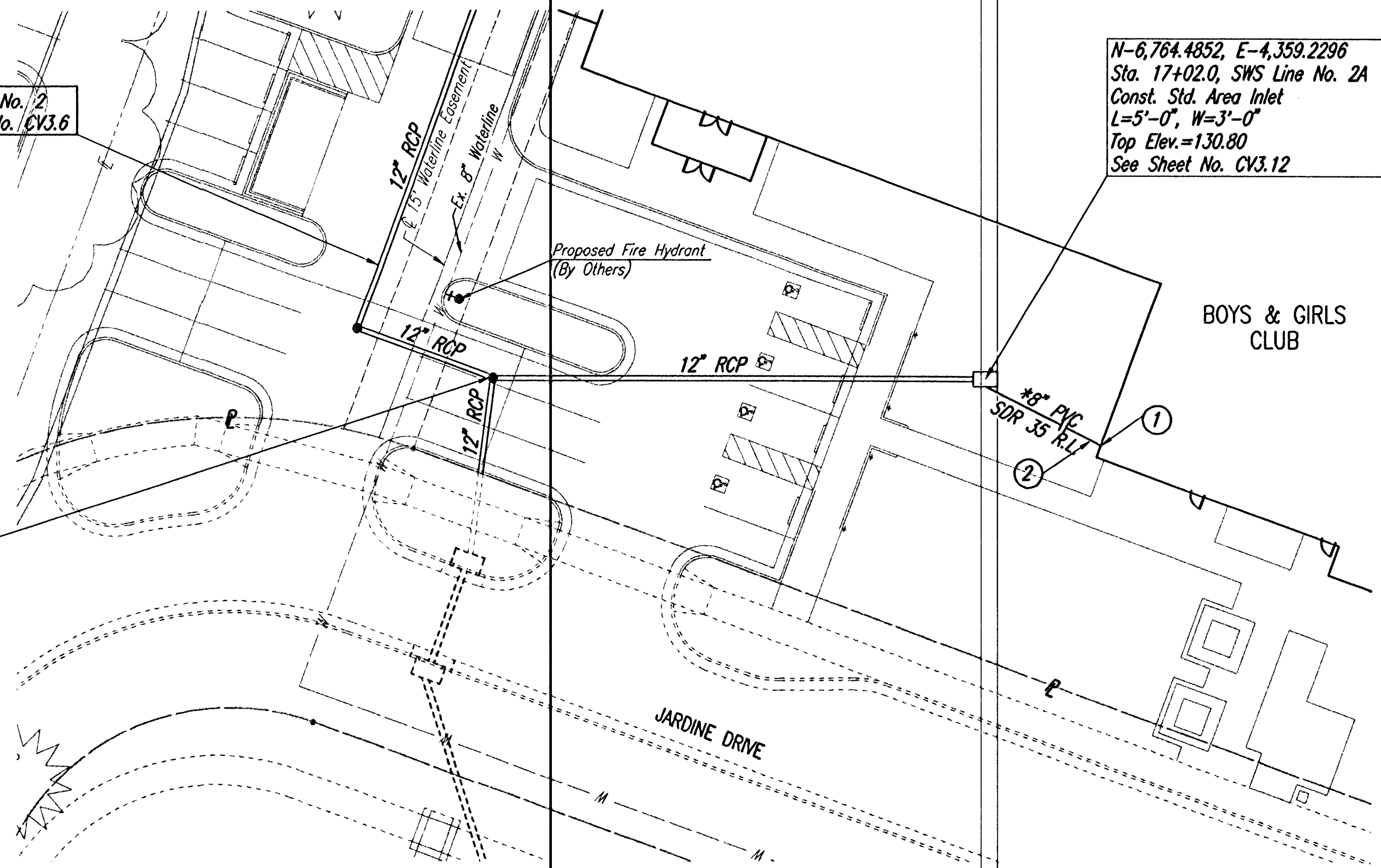


CONCRETE COLLAR DETAIL

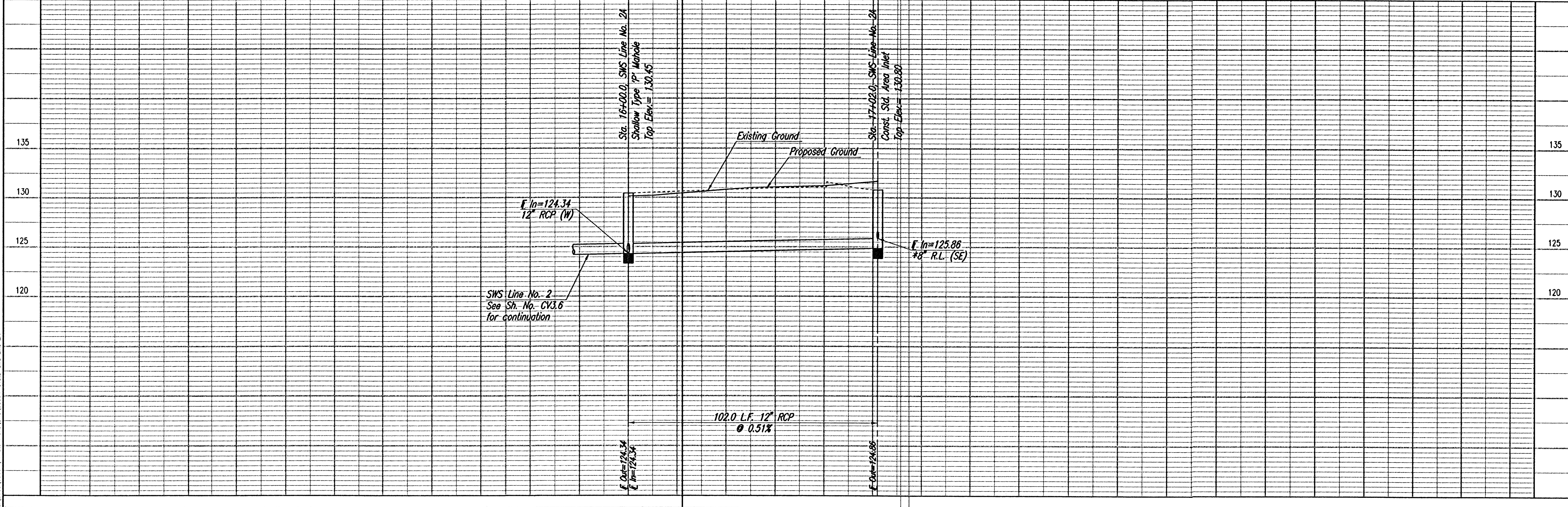
Concrete collars shall be provided at connection to existing conduits where, in the opinion of the Architect, a collar is required for a satisfactory connection. 3,000 P.S.I. Concrete, or the mix used in concrete pavement, at the Contractors option, shall be used throughout. See Bending Diagram and views above for reinforcing steel.



* ALL RAIN LEADERS AND SWS PIPE LESS THAN 12" SHALL BE UNDER THE OFFICE OF CENTRAL INSPECTION'S PERMIT AND NOT PART OF CITY OF WICHITA STORM SEWER PROJECT.



SWS LINE NO. 2A



BOYS AND GIRLS CLUB
SWS LINE NO. 2A
STA. 16+00.0 TO STA. 17+02.0

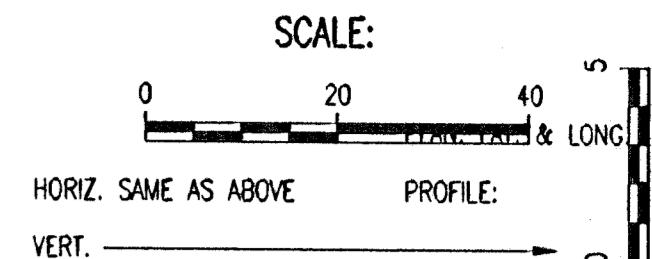
CITY OF WICHITA PRIVATE PROJECT NO. 1655 PPS (607861)

Professional Engineering Consultants, P.A.
303 S. TOPEKA • WICHITA, KANSAS 67202
316-262-2691 • FAX 316-262-3003

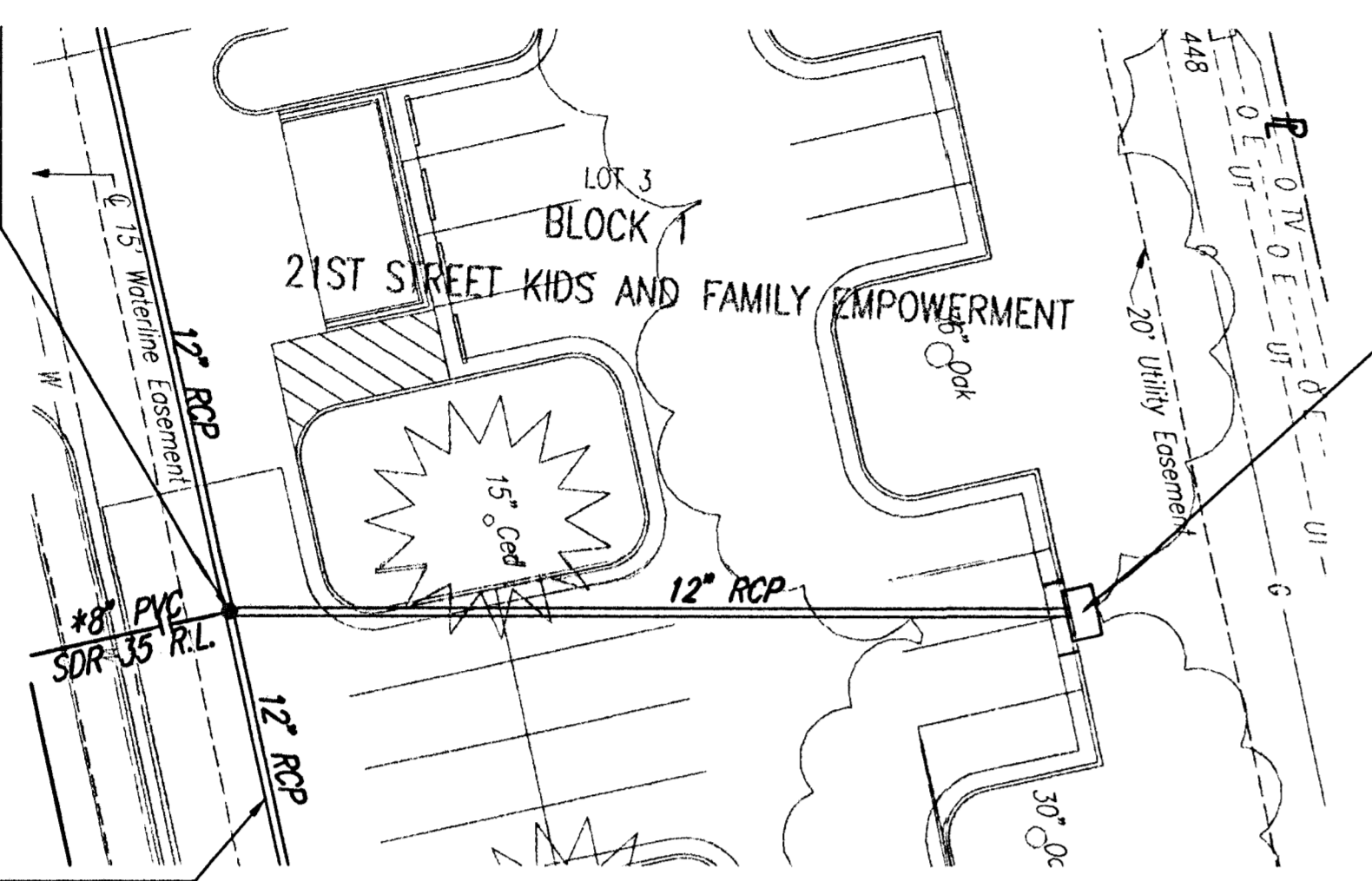
Designed by: DMH
Drawn by: SAW
Job No.: 0566A
Date: FEBRUARY 2006

Sheet CV3.8

Sheet 04-10-2006 5:17:35 PM by SAW
Plot Scale 1/2" = 1'-0" 04-12-2006 6:47:27 AM by SAW
C:\2005\0566A\Private Plans\SWS\0566A-CV3.8-SWS Line 2A



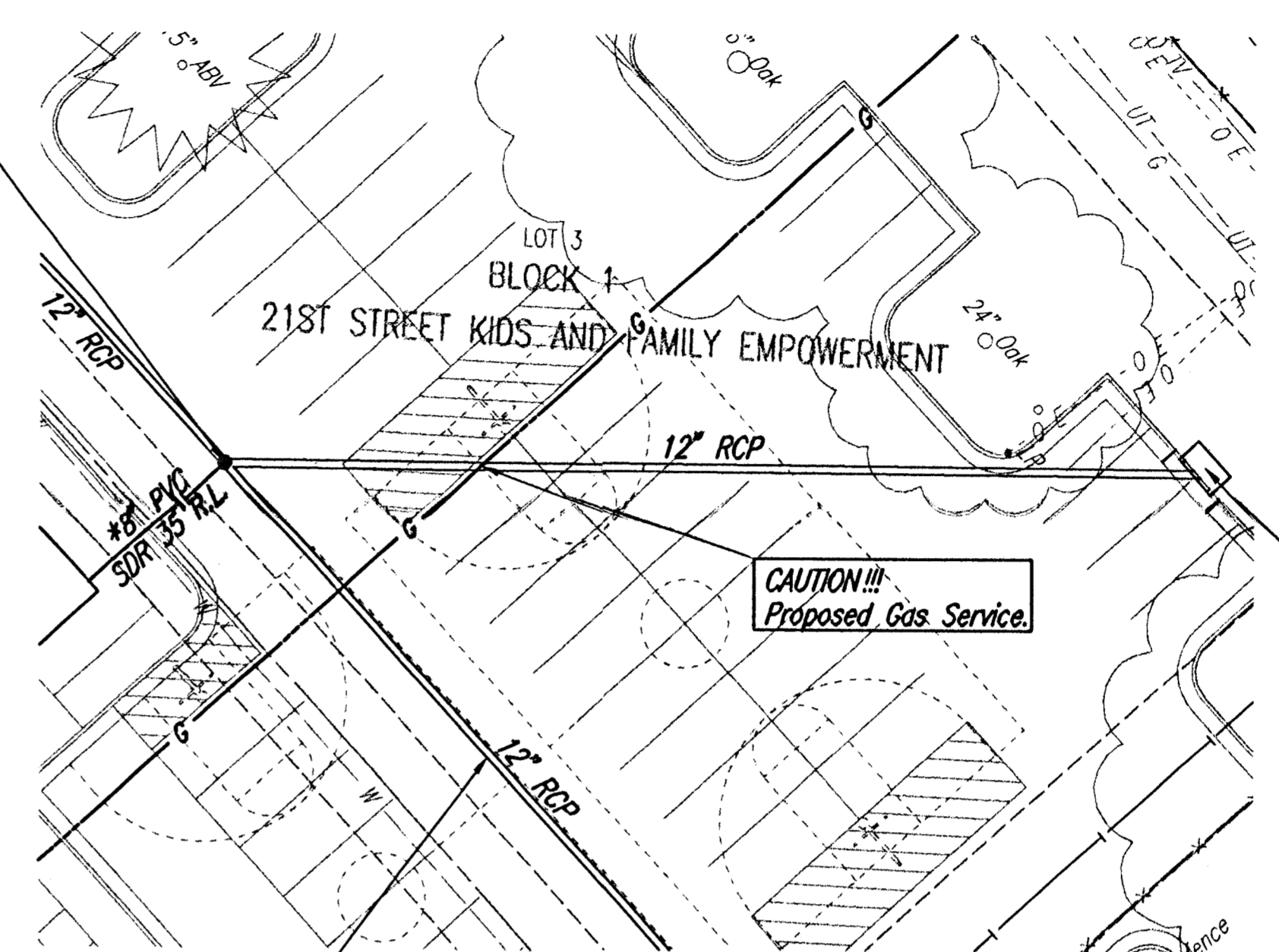
N-6,805.3853, E-4,233.4590
Sta. 18+00.0, SWS Line No. 2B=
Sta. 11+45.5 SWS Line No. 2
Shallow Type 'P' Manhole
Top Elev.=130.45



N-6,827.3972, E-4,133.7113
Sta. 19+02.1, SWS Line No. 2B=
Const. Std. Type I Curb Inlet
L=6'-4", W=4'-4"
Top Elev.=128.90
See Sheet No. CV3.11

See Sheet No. CV3.6
for SWS Line No. 2

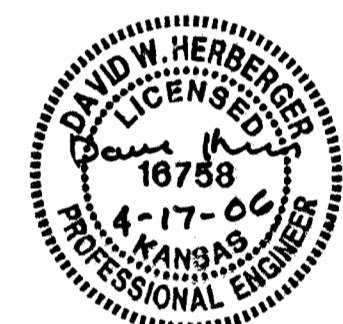
N-6,897.3853, E-4,233.4590
Sta. 20+00.0, SWS Line No. 2C=
Sta. 12+37.5 SWS Line No. 2
Shallow Type 'P' Manhole
Top Elev.=130.97



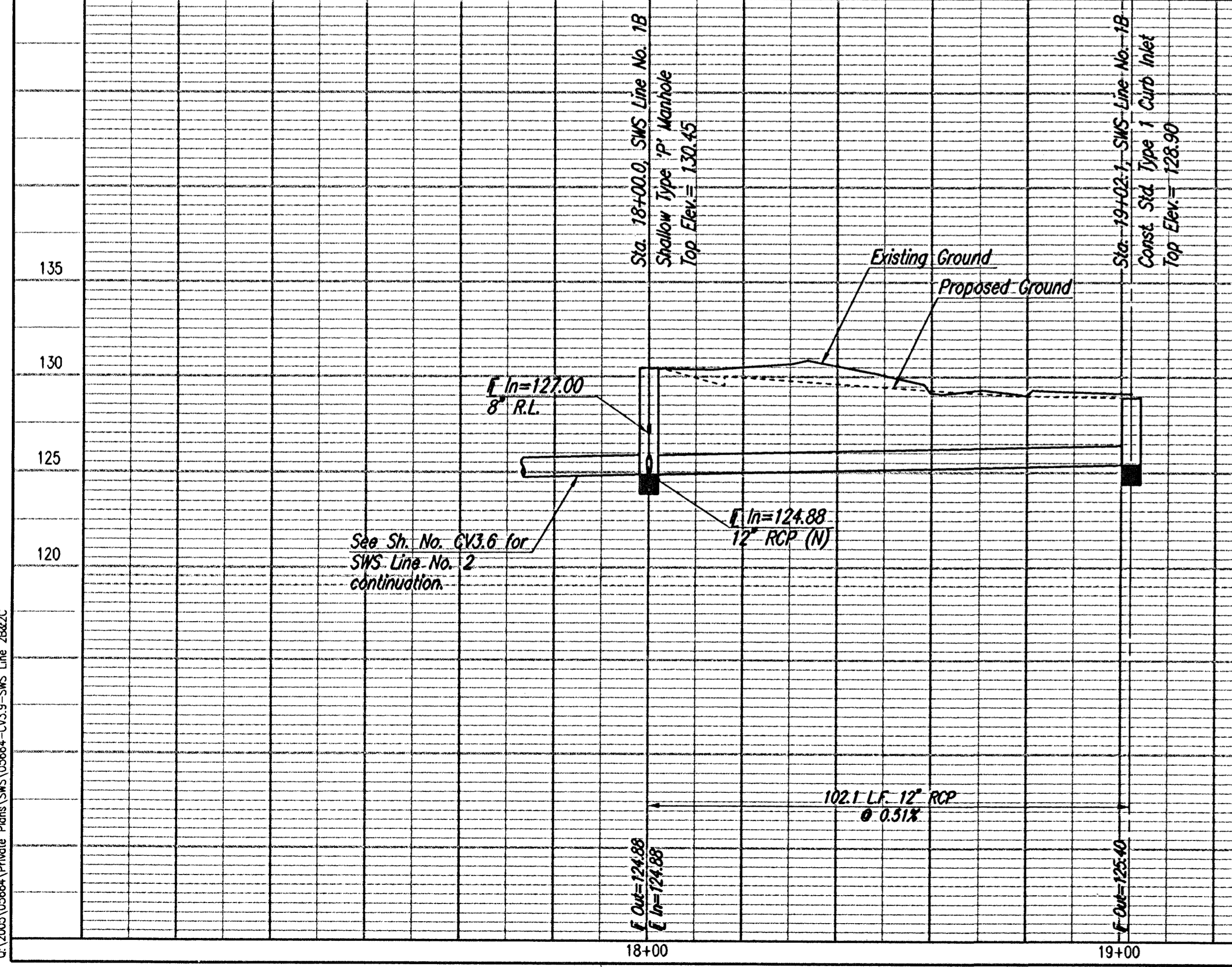
N-6,987.8972, E-4,133.7113
Sta. 21+34.7, SWS Line No. 2C=
Const. Std. Type I Curb Inlet
L=6'-4", W=4'-4"
Top Elev.=128.90
See Sheet No. CV3.11

See Sheet No. CV3.7
for SWS Line No. 2

* ALL RAIN LEADERS AND SWS PIPE LESS THAN 12" SHALL
BE UNDER THE OFFICE OF CENTRAL INSPECTION'S PERMIT
AND NOT PART OF CITY OF WICHITA STORM SEWER PROJECT.

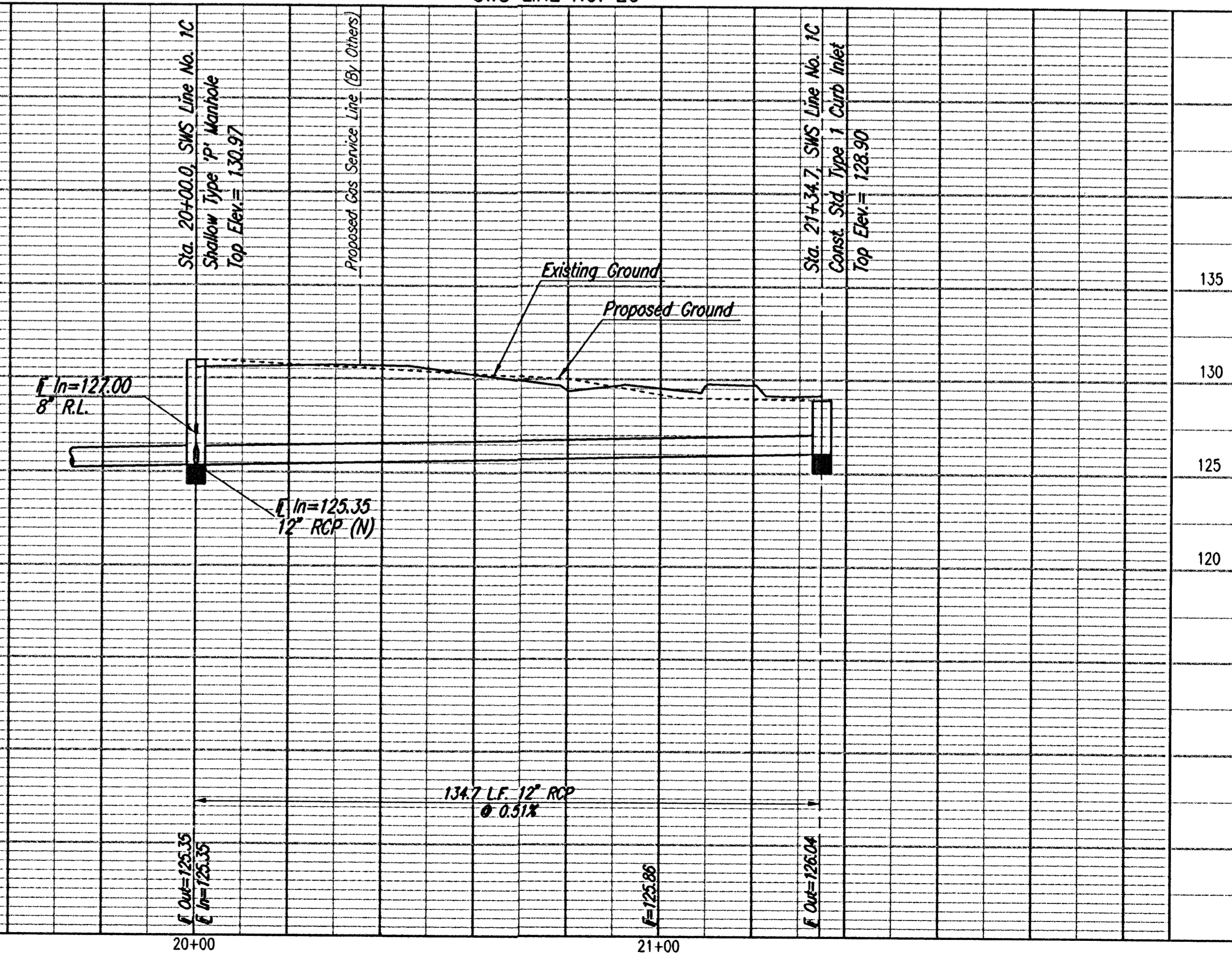


SWS LINE NO. 2B



See Sh. No. CV3.6 for
SWS Line No. 2
continuation.

SWS LINE NO. 2C



BOYS AND GIRLS CLUB
SWS LINE NO. 2B
STA. 18+00.0 TO STA. 19+02.1
SWS LINE NO. 2C
STA. 20+00.0 TO STA. 21+34.7
CITY OF WICHITA PRIVATE PROJECT NO. 1653 PPS (607861)

Professional Engineering Consultants, P.A.
303 S. TOPEKA • WICHITA, KANSAS 67202
316-262-2691 • FAX 316-262-3003

Designed by: DWH
Drawn by: SWW
Job No.: 05664
Date: FEBRUARY 2006

Sheet CV3.9

Save: 04-10-2006 4:46:22 PM by SWW
File Name: 1520 04-10-2006 5:02:41 PM by SWW
C:\Users\Private\Projects\SWW\05664-CV3.9-SWS Line 2B.C3D

N-6,691.3967, E-4,571.7231
Sta. 0+00.0, SWS Line No. 1
Existing Curb Inlet
Top Elev.=130.32
F Out=124.16

N-6,709.8972, E-4,571.7231
Sta. 0+18.5, SWS Line No. 1
Const. Std. Area Inlet
RCP coupling
F Out=124.21
Install 37.0 L.F. 12" RCP
See Detail Sheet No. CV3.8

N-6,784.9395, E-4,584.0838
Sta. 0+95.5, SWS Line No. 1
Const. Std. Area Inlet
L=5'-0", W=3'-0"
Top Elev.=131.00
Install 53.8 L.F. 12" RCP (N)
See Sheet No. CV3.10

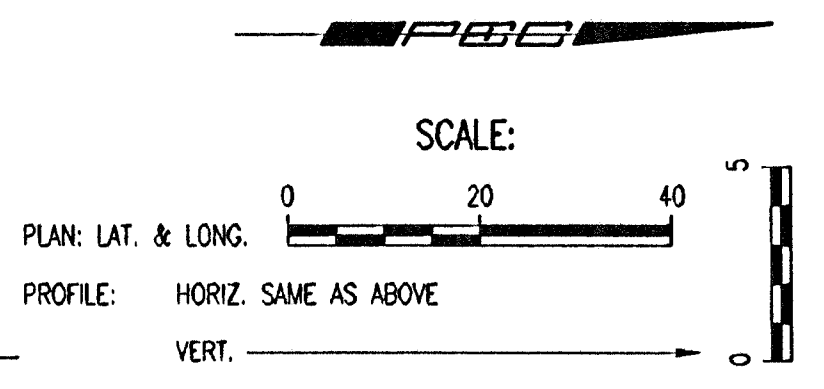
N-6,836.0639, E-4,600.7487
Sta. 1+49.3, SWS Line No. 1=
Sta. 7+00.0 SWS Line No. 1A
Const. Shallow Type 'P' Manhole
Diameter = 4'-0"
Top Elev.=131.19
Install 149.6 L.F. 12" RCP (N)
Install 45.0 L.F. 12" RCP (E)
See Sheet No. CV3.12-CV3.13

SWS Line No. 1B
See Sheet CV3.5

N-6,985.5420, E-4,547.4157
Sta. 3+44.9, SWS Line No. 1=
Sta. 8+00.0, SWS Line No. 1B
Const. Std. Area Inlet
L=5'-0", W=3'-0"
Top Elev.=129.00
Install 263.7 L.F. 12" RCP (N)
Install 110.0 L.F. 12" (W)
See Sheet No. CV3.10

N-6,746.8972, E-4,571.7231
Sta. 0+55.5, SWS Line No. 1
Const. Std. Area Inlet
L=5'-0", W=3'-0"
Top Elev.=130.00
Install 40.0 L.F. 12" RCP (N)
See Sheet No. CV3.10

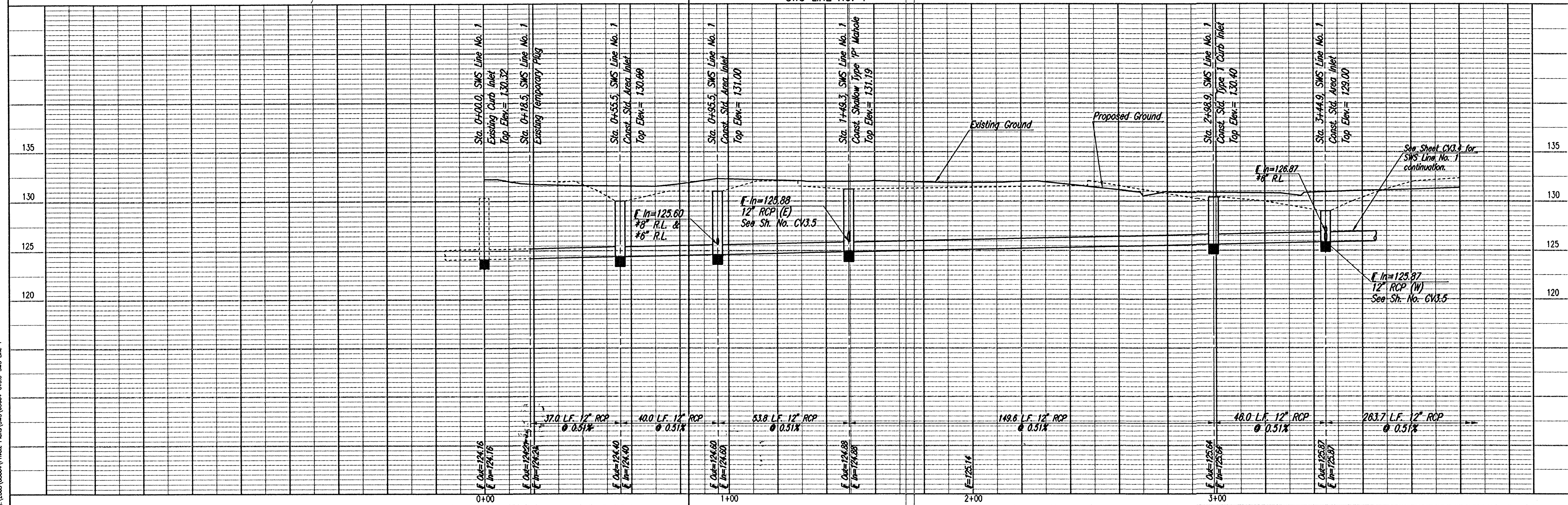
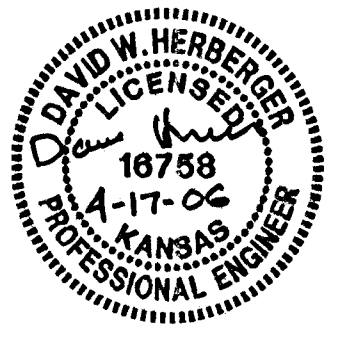
N-6,985.5420, E-4,593.4157
Sta. 2+98.9, SWS Line No. 1=
Const. Std. Type I Curb Inlet
L=6'-4", W=4'-4"
Top Elev.=130.40
Install 46.0 L.F. 12" RCP (W)
See Sheet No. CV3.11



- ① Connect to Building Rainleader.
6" RL FL= 29.75
8" RL FL= 29.58
See Mechanical Sheets.
- ② Construct PVC Rainleader
Per City Requirements

See Sheet CV3.4
for SWS Line No. 1
continuation

* ALL RAIN LEADERS AND SWS PIPE LESS THAN 12" SHALL
BE UNDER THE OFFICE OF CENTRAL INSPECTION'S PERMIT
AND NOT PART OF CITY OF WICHITA STORM SEWER PROJECT.



SWS LINE NO. 1
STA. 0+00.0 TO STA. 3+44.9

BOYS AND GIRLS CLUB

Professional Engineering Consultants, P.A.
303 S. TOPEKA • WICHITA, KANSAS 67202
316-262-2691 • FAX 316-262-3003

Job No. 05664 Date FEBRUARY, 2006
Designed by DMH
Drawn by SWM

Sheet CV3.3

SWS Line No. 1
 Drawn by SWM
 Date FEBRUARY, 2006
 Job No. 05664
 Professional Engineering Consultants, P.A.
 303 S. TOPEKA • WICHITA, KANSAS 67202
 316-262-2691 • FAX 316-262-3003

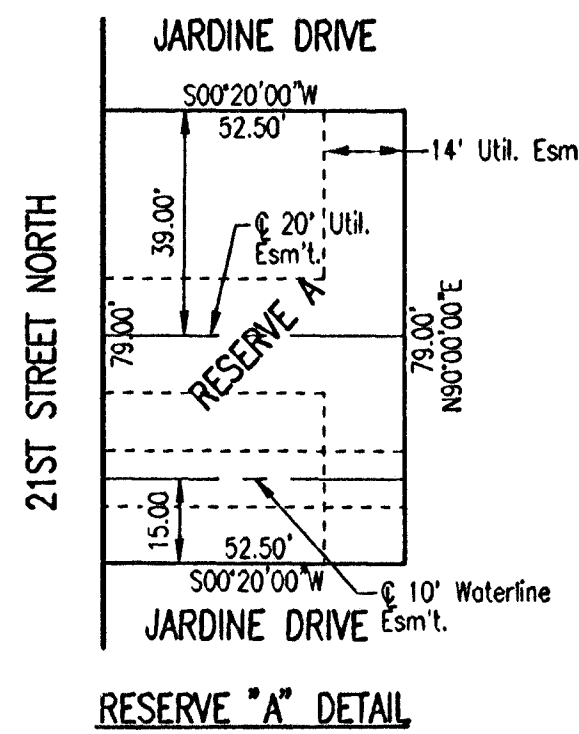
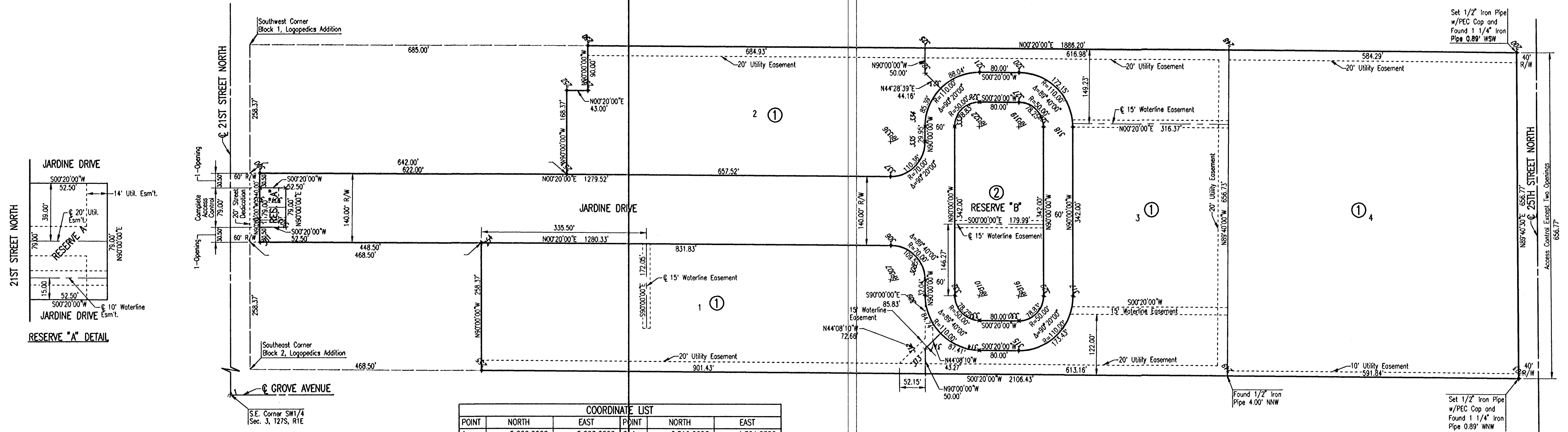
21ST STREET KIDS AND FAMILY EMPOWERMENT

AN ADDITION TO WICHITA, SEDGWICK COUNTY, KANSAS

PBB
SCALE: 1" = 100'

LEGEND

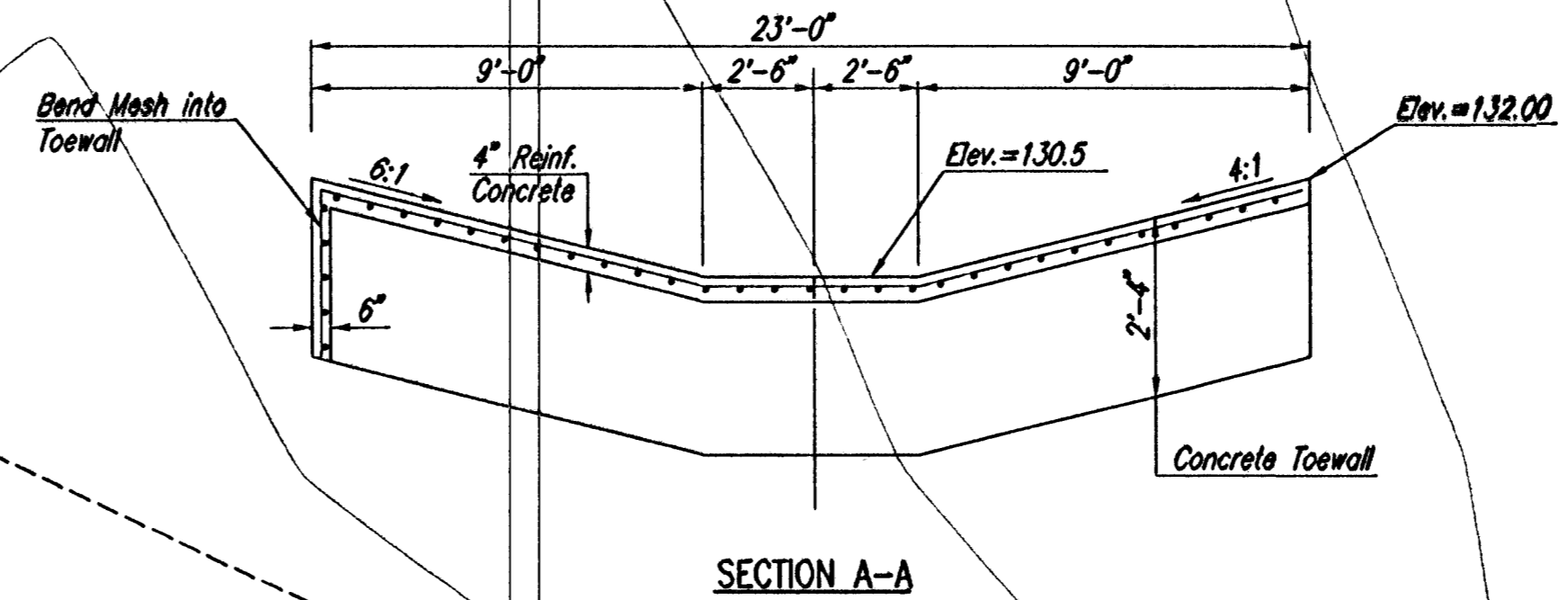
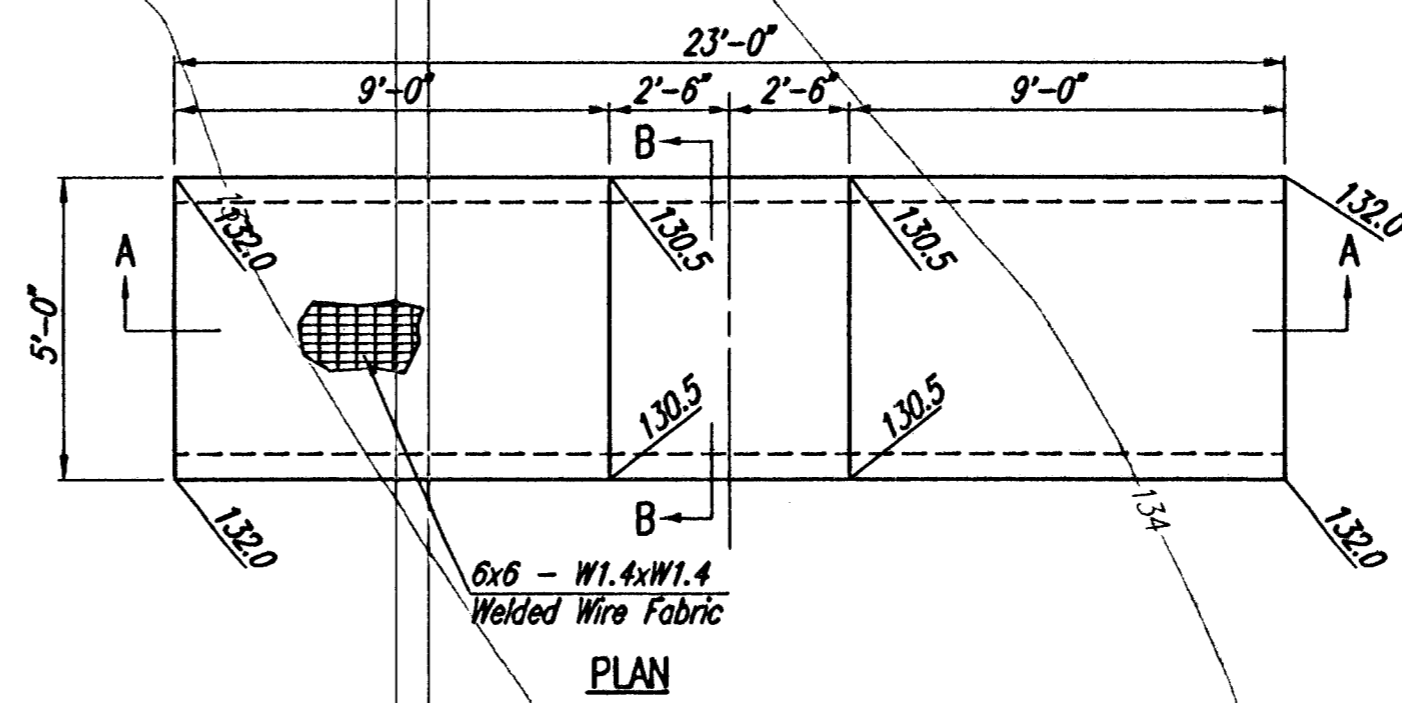
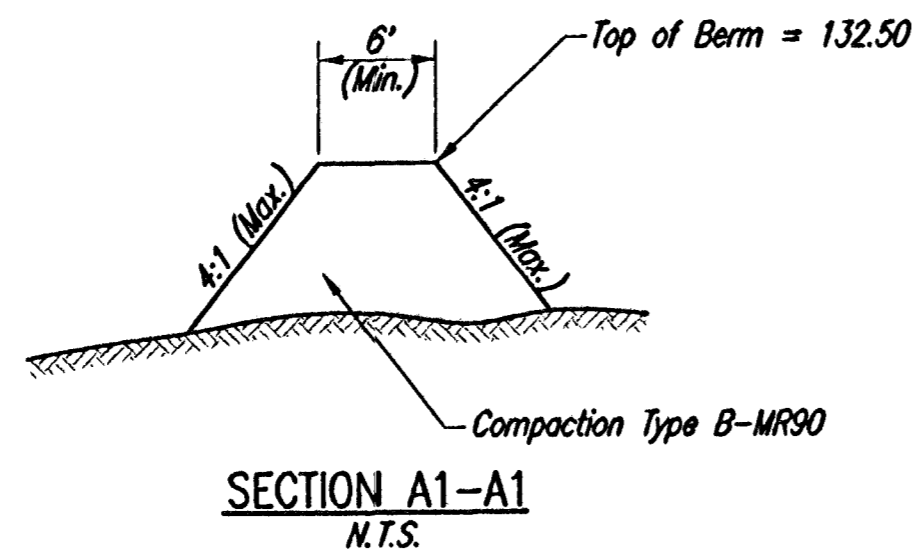
- SET 1/2" REBAR W/PEC CAP UNLESS OTHERWISE NOTED



COORDINATE LIST					
POINT	NORTH	EAST	POINT	NORTH	EAST
1	5,000.0000	5,000.0000	34	6,519.2623	4,704.5758
200	7,611.1565	4,101.5586	35	6,599.2573	4,705.0412
203	7,614.8819	4,758.3202	36	6,599.8972	4,595.0431
249	7,023.0561	4,754.8771	37	6,709.8972	4,595.0431
248	7,026.8767	4,098.1593	38	6,709.8972	4,253.0468
250	5,724.9884	4,090.5851	39	6,599.8972	4,253.0468
251	5,724.9884	4,180.5851	30	6,600.5372	4,143.0487
252	5,681.9891	4,180.3350	31	6,520.5422	4,142.5833
253	5,681.9891	4,348.7043	32	6,519.9023	4,252.5814
254	5,508.4921	4,487.6961	33	6,441.4144	4,175.5123
255	5,508.4921	4,746.0656	34	6,409.9023	4,144.5699
300	5,060.0000	4,345.0863	35	6,409.9023	4,094.5699
301	5,060.0000	4,485.0887	36	6,520.1932	4,202.5823
302	5,060.0000	4,454.5875	37	6,600.1881	4,203.0476
303	5,112.5000	4,454.8929	38	6,649.8972	4,253.0468
304	5,112.5000	4,375.8929	39	6,649.8972	4,595.0431
305	5,060.0000	4,375.5875	30	6,599.8972	4,645.0422
306	6,340.3094	4,492.5360	31	6,519.6114	4,644.5768
307	6,339.9023	4,562.5348	32	6,469.9023	4,594.5777
308	6,409.9023	4,562.5348	33	6,469.9023	4,252.5814
309	6,409.9023	4,594.5777	34	6,409.9023	4,252.5814
310	6,519.9023	4,594.5777	35	6,409.9023	4,282.5300
311	6,440.9567	4,671.1780	36	6,339.9023	4,282.5300
312	6,409.9023	4,701.3099	37	6,339.4951	4,352.5289
313	6,409.9023	4,751.3099			

	Revision No. _____ By _____ Date _____	
CITY OF WICHITA, KANSAS JAMES L. ARMOUR, P.E. - CITY ENGINEER BOYS AND GIRLS CLUB		
PLAT CITY OF WICHITA PROJECT NO. 1653 PPS (607861)		
Professional Engineering Consultants, P.A. 303 S. TOPEKA • WICHITA, KANSAS 67202 316-262-2691 • FAX 316-262-3003		
Designed by	DWH	Job No. 05664
Drawn by	SAW	Date February 2006
		Sht. CV4.1

Solved 03-24-2006 3:12:12 PM by JAW
 Plot Scale: 1:100, 04-10-2006 4:45:59 PM by SWM
 C:\2005\05664\Private Plans\05664-04.1-PL1

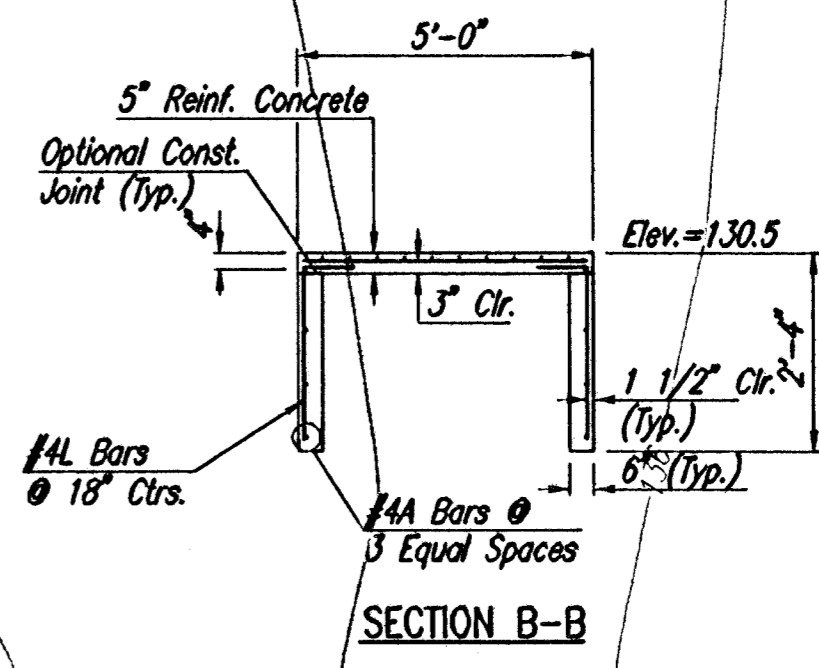


GENERAL NOTES

UNIT STRESSES:
 CONCRETE: $F'_c=4,000$ P.S.I., $F_y=60,000$ P.S.I.
 $F_c=1,600$ P.S.I., $F_s=24,000$ P.S.I.

CONCRETE: Concrete shall have a minimum 28 day compressive strength of 4,000 P.S.I. Bevel all exposed edges with a 3/4" triangular moulding unless otherwise noted.

REINFORCING: Welded wire fabric shall conform to ASTM A185.



CONCRETE WEIR DETAILS

DRY DETENTION
 0.70 AC. @ 130.5
 1.00 AC. @ 131.0
 1.20 AC. @ 132.0
 Hw100=131.5

Construct Berm
See Section A1-A1
this sheet.

Construct Concrete
Overflow Weir. See
Detail this sheet.

LEASE LIMITS

LEASE LIMITS



REVISD PER CITY COMMENTS		DWH	4-17-06
No.	Revision	By	Date
CITY OF WICHITA, KANSAS JAMES L. ARMOUR, P.E. - CITY ENGINEER BOYS AND GIRLS CLUB			
DRY DETENTION PLAN			
CITY OF WICHITA PROJECT NO. 1653 PPS (607861)			
Professional Engineering Consultants, P.A.			
303 S. TOPEKA • WICHITA, KANSAS 67202 316-262-2691 • FAX 316-262-3003			
Designed by	DWH	Job No.	05664
Drawn by	SAW	Date	February 2006

Saved 04-17-2006 9:38:52 AM by SAW
 Plot Scale 1/32"=1'-0" 04-17-2006 9:42:05 AM by SAW
 C:\Users\jherber\My Documents\Projects\1653 PPS\1653 PPS Dry Detention