

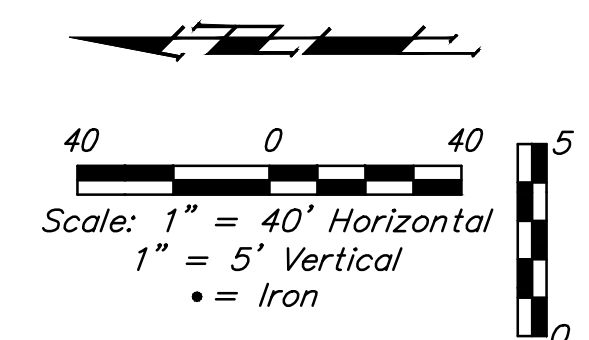
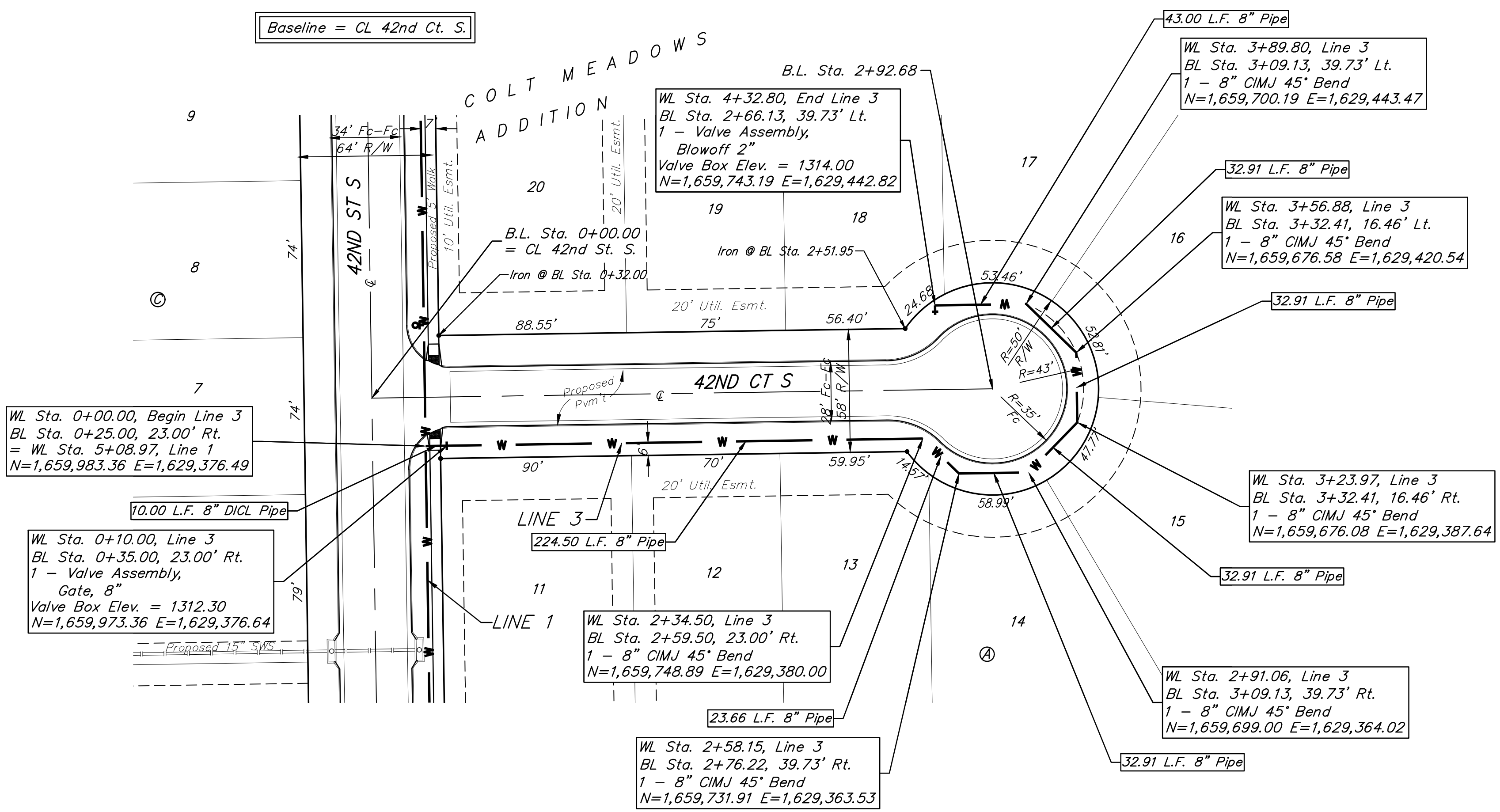
BENCHMARKS:
 BM #1: TOP OF 1 1/2" ALUMINUM MKEC DISC SOUTH SIDE OF FIELD ENTRANCE. 35' WEST OF HOOVER ROAD. 17' NNE OF POWER POLE. 28' SOUTH AND 35' WEST OF NE CORNER, SE1/4, SEC. 15, T28S, R1W. ELEV. = 1313.55 NAVD88

BM #2: CROSS CUT TOP OF CURB NORTH SIDE OF NORTH CIRCLE DRIVE TO OATVILLE ELEMENTARY. 3' WEST OF FIRE HYDRANT. 7' EAST OF FENCE CORNER. 373' NORTH AND 48' WEST OF NE CORNER, SE1/4, SEC. 15, T28S, R1W. ELEV. = 1315.78 NAVD88

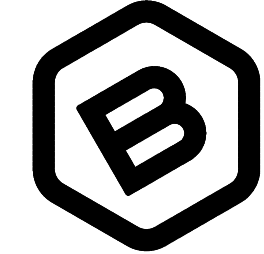
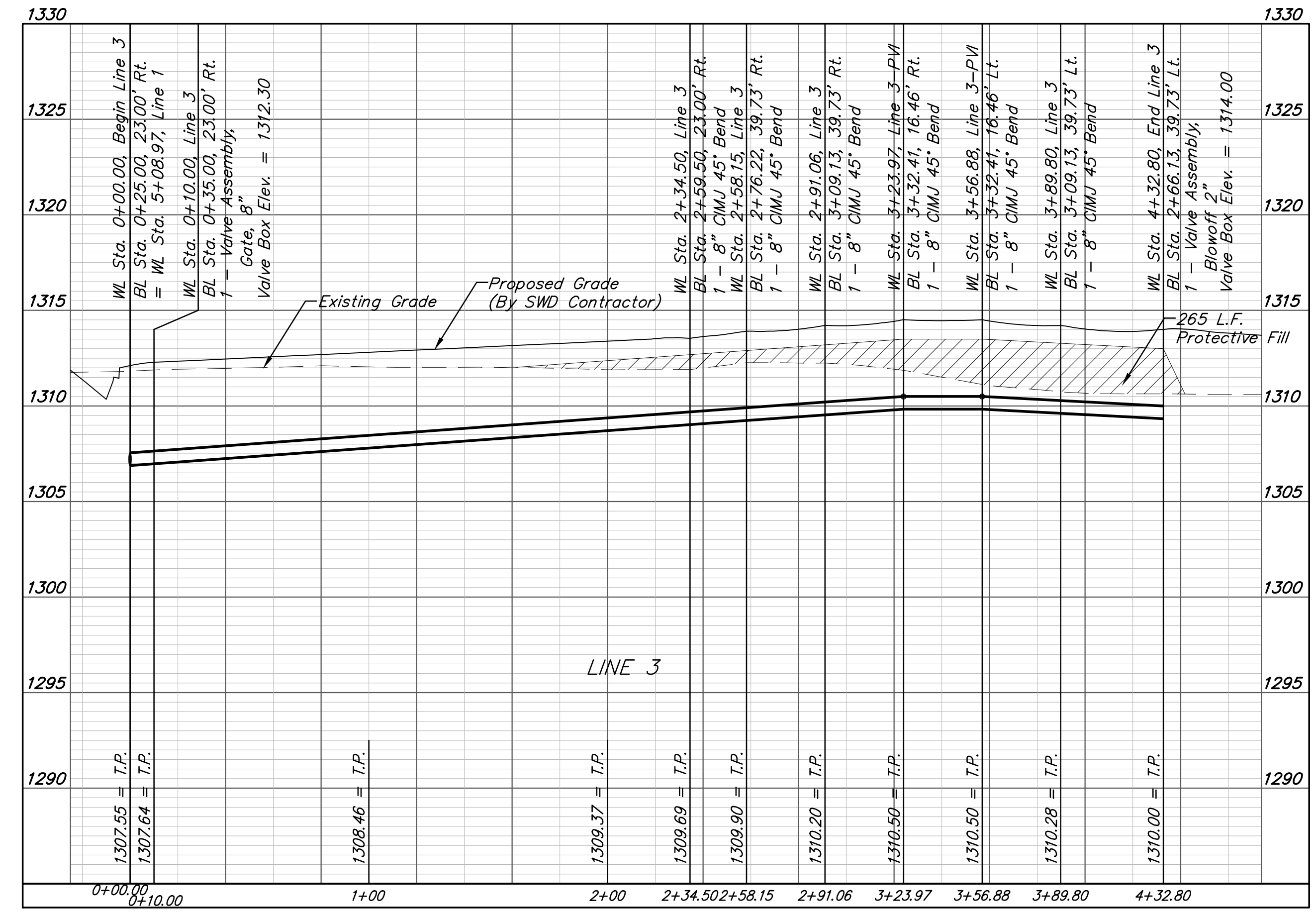
Trees in conflict with water line construction to be removed by contractor. To be paid for as lump sum bid item "Site Clearing"

All other trees shall remain and be protected from damage during construction. Overhanging limbs shall be trimmed by the Contractor using a chain saw only as necessary for construction and with approval of the Engineer. Cost of tree trimming to be included in bid item "Site Clearing"

Baseline = CL 42nd Ct. S.



Pipe layout is shown with horizontal and vertical deflections. Contractor to use short pipe lengths, high deflection couplers, and manufacturer recommended pipe deflections to meet planned alignment.



BAUGHMAN COMPANY
 315 Ellis St.
 Wichita, KS 67211
 316-262-7271
 BaughmanCo.com

COLT MEADOWS ADD.
 Phase 1

LINE 3

WATER DISTRIBUTION SYSTEM

PROJECT NUMBER:
 22-04-E165

DESIGN: NBW DRAWN: TMS

DATE: April 27, 2022

SHEET OF
5 16