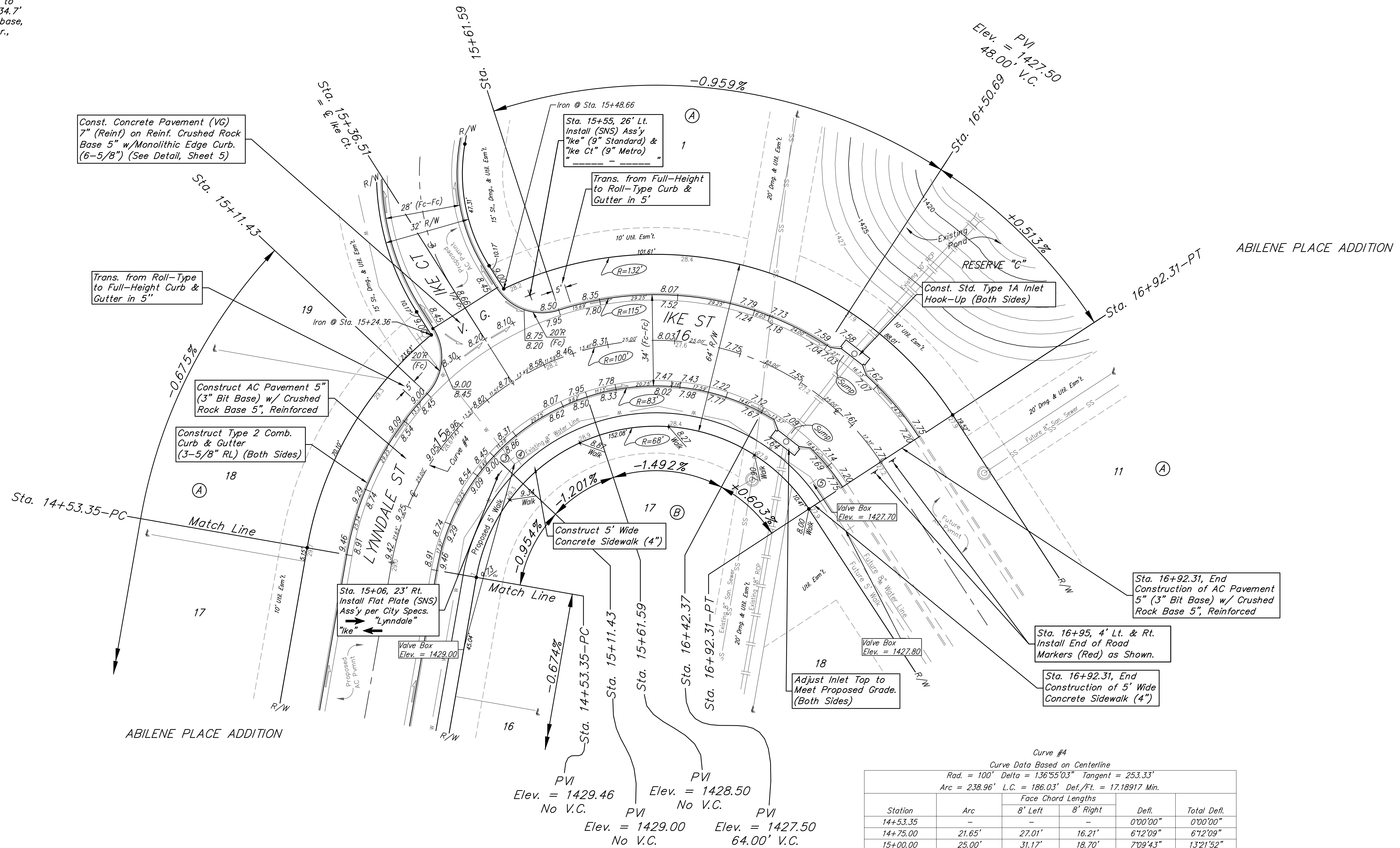
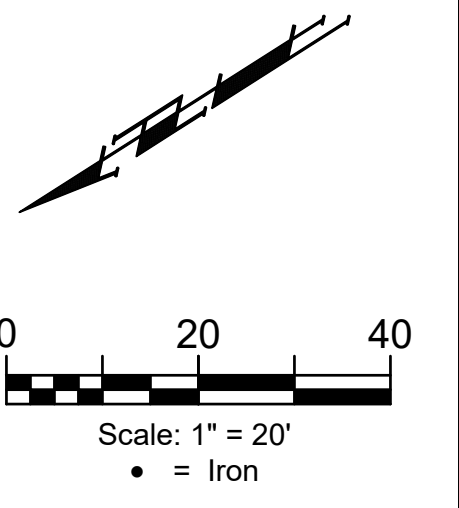


**BENCHMARK #1:**  
Chiseled plus cut inside chiseled square, SE Cor. of catch basin on S. side of Apollo St., 32.5' W. to line of back of east curb of drive north, 11' E. to line of end of curb north, 103.2' ENE. of deflection cor., N. Line. Lot 9, Block A, Abilene Place Add. Elev. = 1432.98 NAVD88

**BENCHMARK #2:**  
Chiseled plus cut inside chiseled square, top of curb, most southerly SW Cor. of parking lot, 17.6' S. to back of N. curb of Apollo St., 34.7' WSW to centerline of light pole base, 114.3' E. & 143.5' N. of NW Cor., Reserve "A", Abilene Place Add. Elev. = 1435.32 NAVD88



Curve #4  
Curve Data Based on Centerline  
Rad. = 100' Delta = 136°55'03" Tangent = 253.33'  
Arc = 238.96' L.C. = 186.03' Def./Ft. = 17.18917 Min.

Station	Arc	Face Chord Lengths		Defl.	Total Defl.
		8' Left	8' Right		
14+53.35	-	-	-	0'00'00"	0'00'00"
14+75.00	21.65'	27.01'	16.21'	6'12'09"	6'12'09"
15+00.00	25.00'	31.17'	18.70'	7'09'43"	13'21'52"
15+11.43	11.43'	14.28'	8.57'	3'16'29"	16'38'21"
15+25.00	13.57'	16.95'	10.17'	3'53'15"	20'31'36"
15+50.00	25.00'	31.17'	18.70'	7'09'44"	27'41'20"
15+61.59	11.59'	14.48'	8.69'	3'19'13"	31'00'33"
15+75.00	13.41'	16.75'	10.05'	3'50'31"	34'51'04"
16+00.00	25.00'	31.17'	18.70'	7'09'44"	42'00'48"
16+25.00	25.00'	31.17'	18.70'	7'09'43"	49'10'31"
16+50.00	25.00'	31.17'	18.70'	7'09'44"	56'20'15"
16+75.00	25.00'	31.17'	18.70'	7'09'44"	63'29'59"
16+92.31	17.31'	21.61'	12.97'	4'57'32"	68'27'31"

Roll type curb & gutter to be constructed on the pavement on this sheet.  
Top of curb elevation are given for full height curb.

**BAUGHMAN COMPANY**  
315 Ellis St.  
Wichita, KS 67211  
316-262-7271  
BaughmanCo.com

ABILENE PLACE ADDITION  
PHASE I

**LYNNDALE**

Sta. 14+53.35 to Sta. 16+92.31  
Street Paving Improvements

PROJECT NUMBER:  
472-2021-085724

DESIGN: DMV DRAWN: JAK  
DATE: March 6, 2023

SHEET OF  
**11 25**

File: E:\Projects\Abilene Place Addition\_20-03-P540\Engineering\Phase 1\STR\_21-03-EB77\STR\_21-03-EB77.dwg