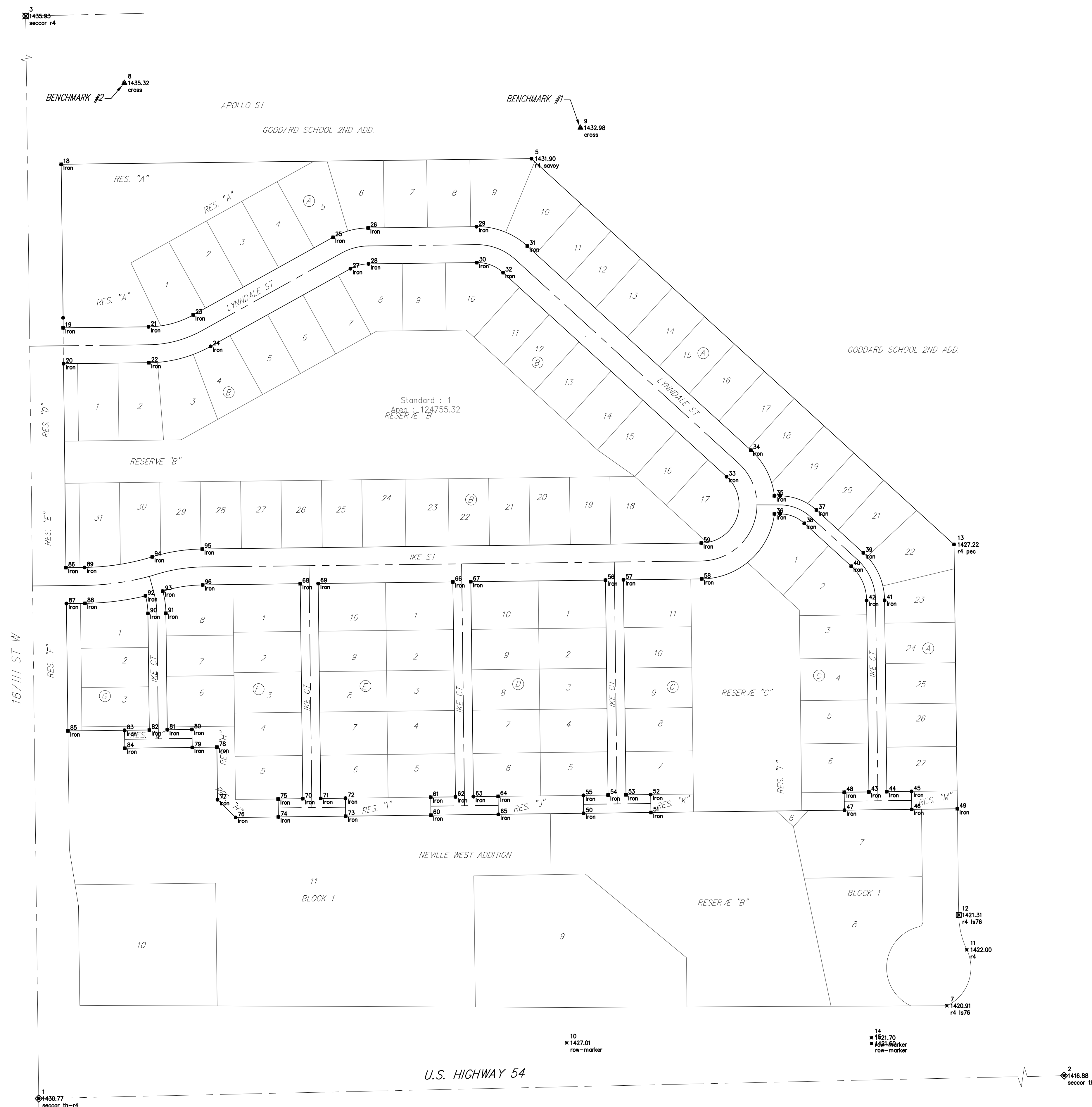
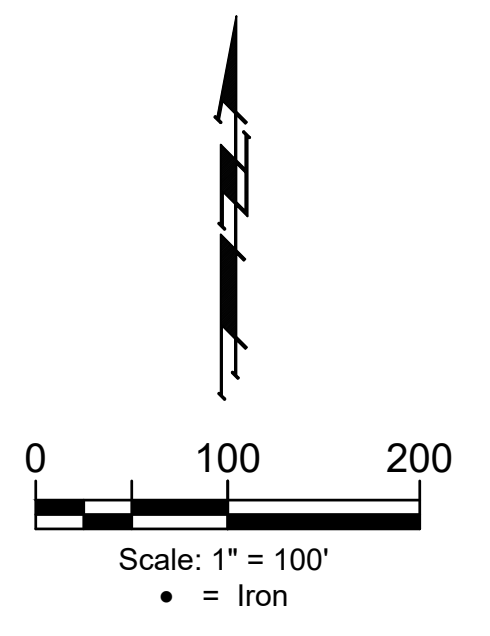


BENCHMARK #1:
Chiseled plus cut inside chiseled square, SE Cor. of catch basin on S. side of Apollo St., 32.5' W. to line of back of east curb of drive north, 11' E. to line of end of curb north, 103.2' ENE. of deflection cor., N. Line. Lot 9, Block A, Abilene Place Add. Elev. = 1432.98 NAVD88

BENCHMARK #2:
Chiseled plus cut inside chiseled square, top of curb, most southerly SW Cor. of parking lot, 17.6' S. to back of N. curb of Apollo St., 34.7' WSW to centerline of light pole base, 114.3' E. & 143.5' N. of NW Cor., Reserve "A", Abilene Place Add. Elev. = 1435.32 NAVD88



Point #	Northing	Easting	Description
1	1,676,957.80	1,591,694.91	seccor th-r4
2	1,677,016.42	1,594,327.73	seccor th-r4
3	1,679,598.84	1,591,663.25	seccor r4
9	1,678,687.37	1,592,660.29	cross
10	1,677,056.97	1,592,635.81	row-marker
20	1,678,266.95	1,591,739.22	Iron
21	1,678,332.77	1,591,890.64	Iron
22	1,678,268.77	1,591,891.41	Iron
23	1,678,353.89	1,591,970.20	Iron
24	1,678,297.94	1,592,001.27	Iron
30	1,678,447.19	1,592,475.72	Iron
56	1,677,881.49	1,592,704.91	Iron
57	1,677,881.87	1,592,736.91	Iron
58	1,677,883.55	1,592,876.42	Iron
59	1,677,947.54	1,592,875.65	Iron
60	1,677,462.73	1,592,393.90	Iron
61	1,677,494.73	1,592,393.52	Iron
62	1,677,495.26	1,592,437.52	Iron
63	1,677,495.64	1,592,469.52	Iron
64	1,677,496.17	1,592,513.51	Iron
66	1,677,878.23	1,592,432.93	Iron
67	1,677,878.62	1,592,464.93	Iron
68	1,677,874.97	1,592,160.95	Iron
69	1,677,875.36	1,592,192.95	Iron
70	1,677,492.00	1,592,165.54	Iron
71	1,677,492.38	1,592,197.54	Iron
72	1,677,492.91	1,592,241.53	Iron
73	1,677,460.91	1,592,241.92	Iron
74	1,677,459.47	1,592,121.92	Iron
75	1,677,491.47	1,592,121.54	Iron
76	1,677,458.56	1,592,045.93	Iron
77	1,677,490.18	1,592,013.55	Iron
78	1,677,583.89	1,592,012.43	Iron
79	1,677,583.37	1,591,968.43	Iron
80	1,677,615.36	1,591,968.05	Iron
81	1,677,614.84	1,591,924.05	Iron
82	1,677,614.45	1,591,892.05	Iron
83	1,677,613.93	1,591,848.05	Iron
84	1,677,581.93	1,591,848.44	Iron
85	1,677,612.72	1,591,747.06	Iron
86	1,677,903.70	1,591,743.57	Iron
87	1,677,839.70	1,591,744.34	Iron
88	1,677,840.10	1,591,777.43	Iron
89	1,677,904.09	1,591,776.66	Iron
90	1,677,822.12	1,591,889.56	Iron
91	1,677,822.50	1,591,921.56	Iron
92	1,677,853.37	1,591,885.19	Iron
93	1,677,861.78	1,591,916.07	Iron
94	1,677,922.95	1,591,897.26	Iron
95	1,677,936.88	1,591,986.35	Iron
96	1,677,872.89	1,591,987.12	Iron



BAUGHMAN COMPANY
315 Ellis St.
Wichita, KS 67211
316-262-7271
BaughmanCo.com

ABILENE PLACE ADDITION
PHASE I

COORDINATES

Street Paving Improvements
PROJECT NUMBER: 472-2021-085724
DESIGN: DMV DRAWN: JAK
DATE: March 6, 2023
SHEET OF 24 25

File: E:\Projects\Abilene Place Addition_20-03-P540\Engineering\Phase 1\STR_21-03-EB77.dwg