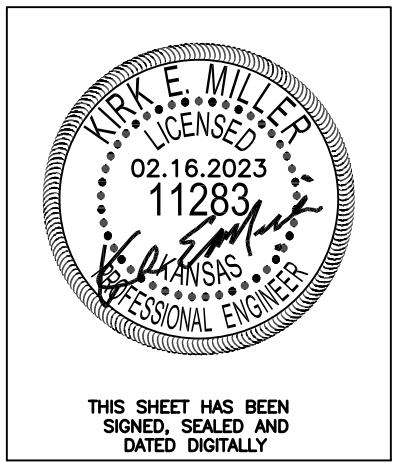
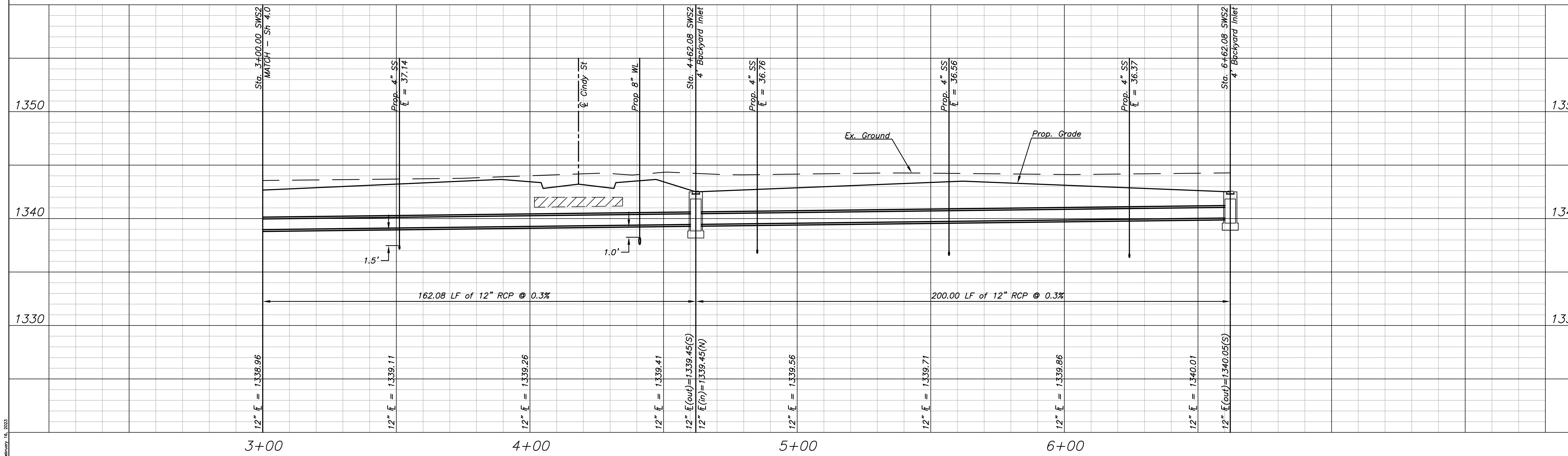
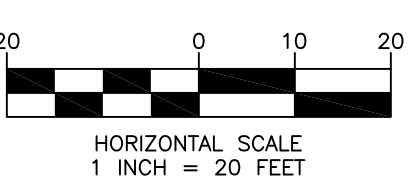
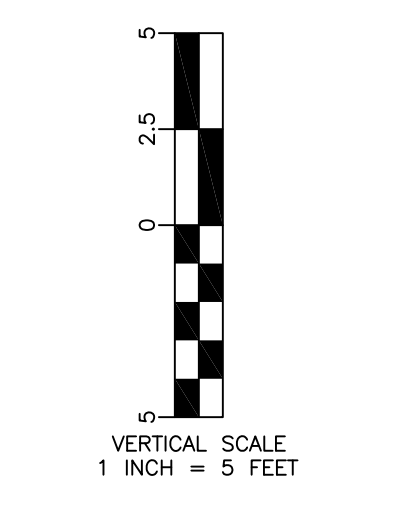


LINE 2



THIS SHEET HAS BEEN  
SIGNED, SEALED AND  
DATED DIGITALLY



Cedar Dale Addition  
SWS2 Plan & Profile  
Wichita, Kansas

**KEMILLER**  
ENGINEERING  
117 E. Lewis, Wichita, KS 67202 (316)264-0242

|                    |                 |              |
|--------------------|-----------------|--------------|
| KEM PROJ.<br>20130 | DATE<br>02.2023 | SHEET<br>4.1 |
| DESIGN<br>KEM      | DRAWN<br>ZJS    |              |

February 15, 2023