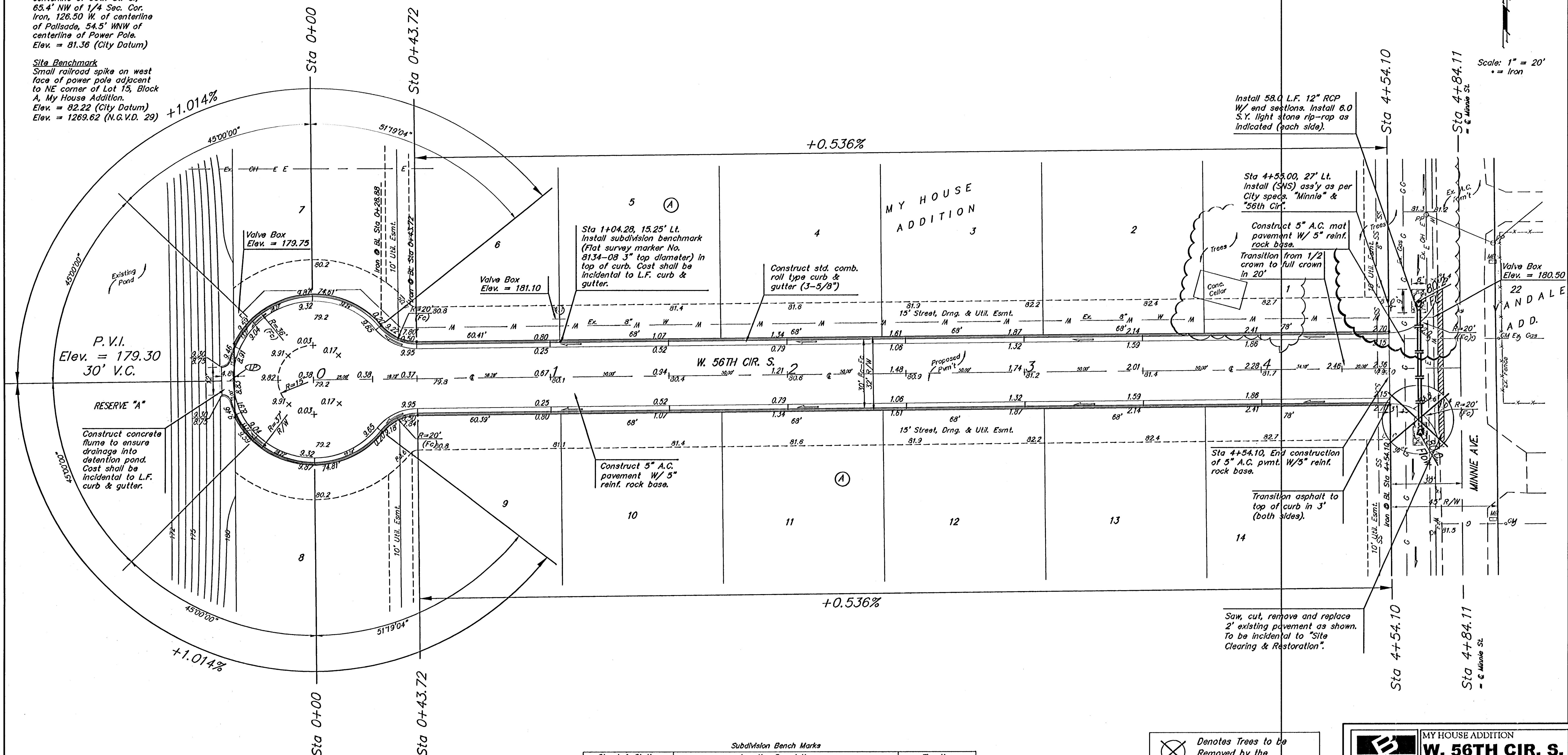


BENCHMARKS:
 City of Wichita Benchmark
 Disc, located at Gold and 55th
 Street South.
 45' W. and 48' N. of 1/4 Sec.
 Cor. Iron, 44.5' N. of
 centerline of 55th St. S.,
 65.4' NW of 1/4 Sec. Cor.
 Iron, 126.50' W. of centerline
 of Palsade, 54.5' WNW of
 centerline of Power Pole.
 Elev. = 81.36 (City Datum)

Site Benchmark
 Small railroad spike on west
 face of power pole adjacent
 to NE corner of Lot 15, Block
 A, My House Addition.
 Elev. = 82.22 (City Datum)
 Elev. = 1269.62 (N.G.V.D. 29)

Scale: 1" = 20'
 = Iron



P.V.I.
 Elev. = 179.30
 30' V.C.

RESERVE "A"

Construct concrete
 flume to ensure
 drainage into
 detention pond.
 Cost shall be
 incidental to L.F.
 curb & gutter.

Sta 1+04.28, 15.25' Lt.
 Install subdivision benchmark
 (Flat survey marker No.
 8134-08 3" top diameter) in
 top of curb. Cost shall be
 incidental to L.F. curb &
 gutter.

Construct std. comb.
 roll type curb &
 gutter (3-5/8")

Construct 5" A.C.
 pavement W/ 5"
 reinf. rock base.

Install 58.0 L.F. 12" RCP
 W/ end sections. Install 6.0
 S.Y. light stone rip-rap as
 indicated (each side).

Sta 4+53.00, 27' Lt.
 Install (SNS) ass'y as per
 City specs. "Minnie" &
 "56th Cir."

Construct 5" A.C. mat
 pavement W/ 5" reinf.
 rock base.
 Transition from 1/2
 crown to full crown
 in 20'

Sta 4+54.10, End construction
 of 5" A.C. pmt. W/ 5"
 reinf. rock base.

Transition asphalt to
 top of curb in 3'
 (both sides).

Saw, cut, remove and replace
 2' existing pavement as shown.
 To be incidental to "Site
 Clearing & Restoration".

Subdivision Bench Marks

Street & Station	Location Description	Elevation
W. 56th Cir. S. 1+04.28, 15.25' Lt.	Adjacent to Fire Hydrant near common lot line of Lots 5 & 6, Block A.	
Wayne Cir. 2+14.61, 15.25' Lt.	Adjacent to Fire Hydrant near common lot line of Lots 19 & 20, Block A.	

⊗ Denotes Trees to be
 Removed by the
 Sanitary Sewer Contractor

NOTE:
 ROLL TYPE CURB & GUTTER TO
 BE CONSTRUCTED ON THE
 PAVEMENT SHOWN ON THIS SHEET.
 TOP OF CURB ELEVATIONS ARE
 GIVEN FOR FULL HEIGHT CURB.

Baughman MY HOUSE ADDITION
W. 56TH CIR. S.
 STA 0+00 TO STA 4+84.11

Boughman Company, P.A. 315 Ellis St. Wichita, KS 67211 P:316-261-7701 F:316-261-0149
 ENGINEERING | SURVEYING | PLANNING | LANDSCAPE ARCHITECTURE

PROJECT NUMBER 47284049	DESIGN TMS
REVISIONS	APPROVED DATE 11/04
	SCALE Noted SHEET

4 OF 16

MyHouse/Sat 0405-E879