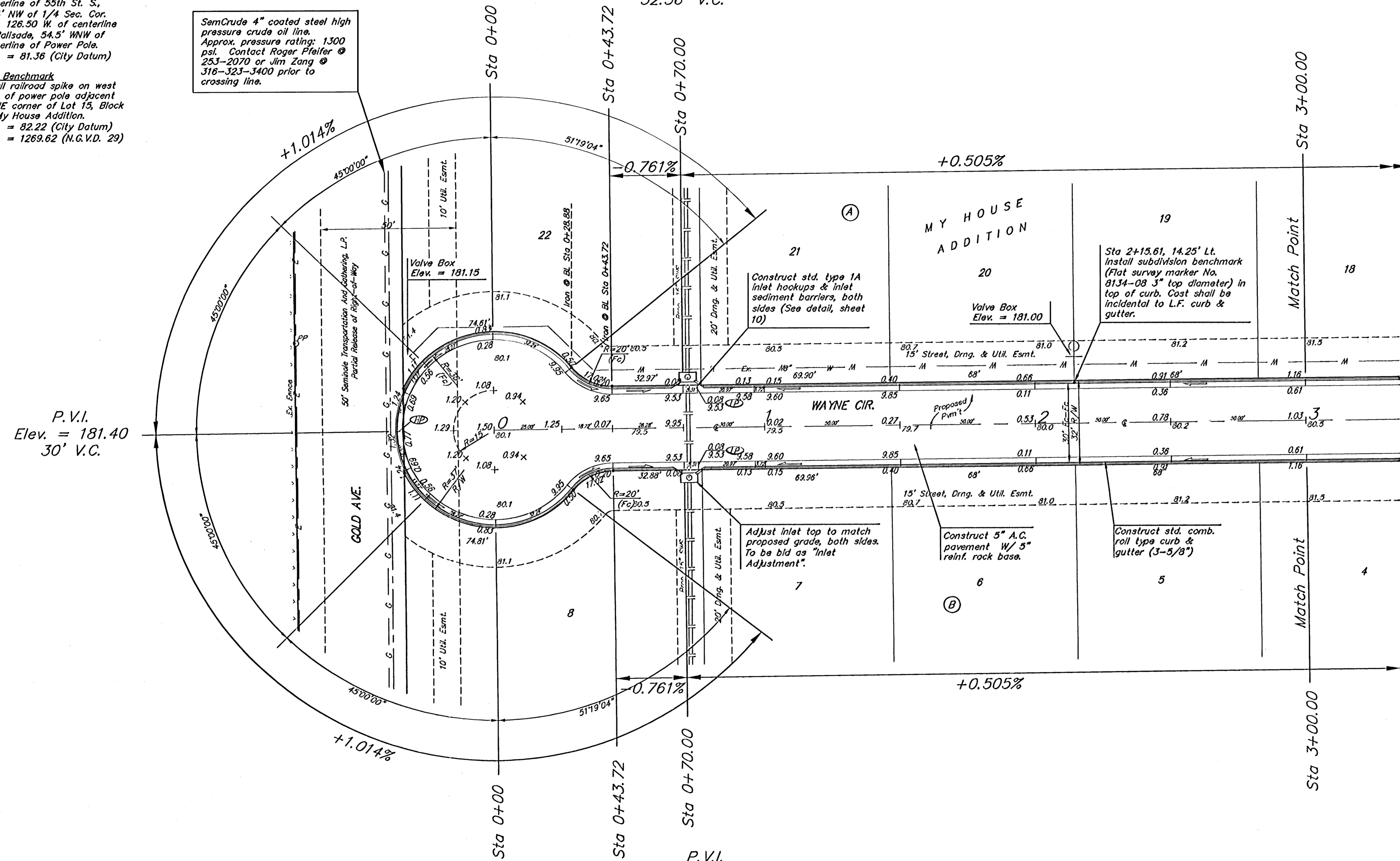


BENCHMARKS:
 City of Wichita Benchmark
 Disc, located at Gold and 55th
 Street South.
 45' W. and 48' N. of 1/4 Sec.
 Cor. Iron, 44.5' N. of
 centerline of 55th St. S.,
 65.4' NW of 1/4 Sec. Cor.
 Iron, 126.50 W. of centerline
 of Pallsade, 54.5' WNW of
 centerline of Power Pole.
 Elev. = 81.36 (City Datum)

Site Benchmark
 Small railroad spike on west
 face of power pole adjacent
 to NE corner of Lot 15, Block
 A, My House Addition.
 Elev. = 82.22 (City Datum)
 Elev. = 1269.62 (N.G.V.D. 29)

SemCrude 4" coated steel high
 pressure crude oil line.
 Approx. pressure rating: 1300
 psi. Contact Roger Pfeifer @
 253-2070 or Jim Zang @
 316-323-3400 prior to
 crossing line.

P.V.I.
 Elev. = 180.00
 52.56' V.C.



P.V.I.
 Elev. = 181.40
 30' V.C.

P.V.I.
 Elev. = 180.00
 52.56' V.C.

NOTE: ROLL TYPE CURB & GUTTER TO BE CONSTRUCTED ON THE PAVEMENT SHOWN ON THIS SHEET. TOP OF CURB ELEVATIONS ARE GIVEN FOR FULL HEIGHT CURB.

	MY HOUSE ADDITION	
	WAYNE CIR.	
STA 0+00 TO STA 3+00.00		
<small>Baughman Company, P.A., 315 E. 15th St., Wichita, KS 67211 P 316-262-7171 F 316-262-0149 ENGINEERING SURVEYING PLANNING LANDSCAPE ARCHITECTURE</small>		
PROJECT NUMBER 472-84049	DESIGN MWS	DRAWN TMS
REVISIONS	APPROVED	DATE 11/04
	SCALE Noted	SHEET
		5 OF 16
MyHouse/Str2		04-05-E879