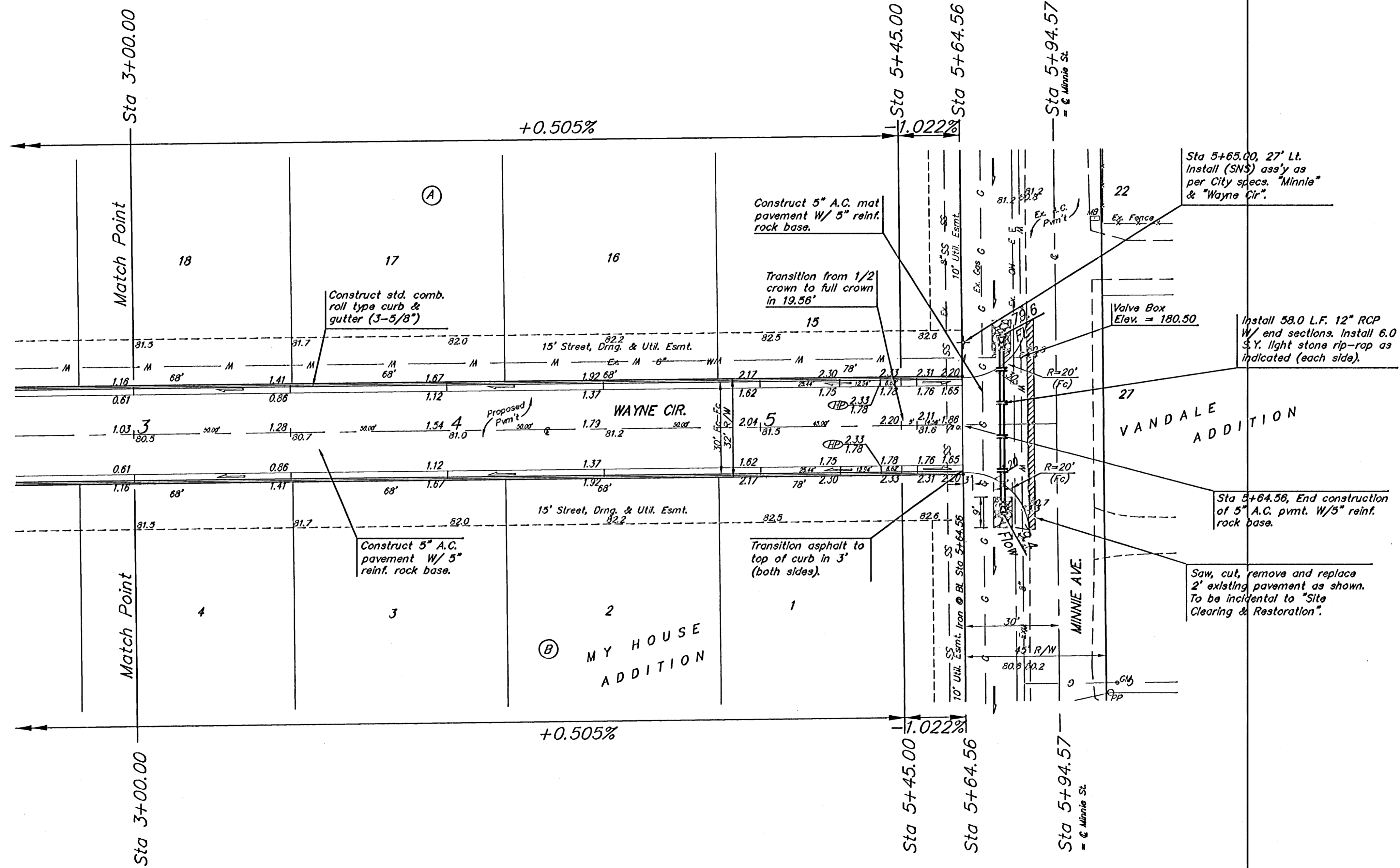
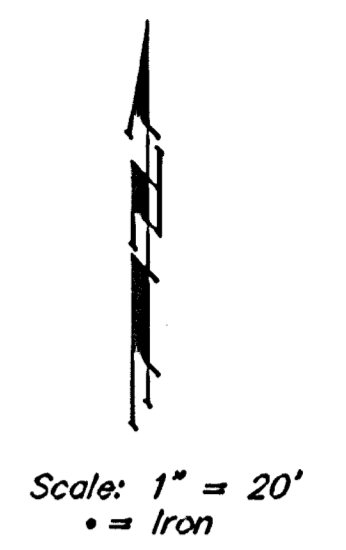


BENCHMARKS:
 City of Wichita Benchmark
 Disc, located at Gold and 55th
 Street South.
 45' W. and 48' N. of 1/4 Sec.
 Cor. Iron, 44.5' N. of
 centerline of 55th St. S.,
 65.4' NW of 1/4 Sec. Cor.
 Iron, 128.50 W. of centerline
 of Palsade, 54.5' WNW of
 centerline of Power Pole.
 Elev. = 81.36 (City Datum)

Site Benchmark
 Small railroad spike on west
 face of power pole adjacent
 to NE corner of Lot 15, Block
 A, My House Addition.
 Elev. = 82.22 (City Datum)
 Elev. = 1269.62 (N.G.V.D. 29)

P.V.I.
 Elev. = 182.40
 39.12' V.C.



P.V.I.
 Elev. = 182.40
 39.12' V.C.

NOTE:
 ROLL TYPE CURB & GUTTER TO
 BE CONSTRUCTED ON THE
 PAVEMENT SHOWN ON THIS SHEET.
 TOP OF CURB ELEVATIONS ARE
 GIVEN FOR FULL HEIGHT CURB.

Baughman		MY HOUSE ADDITION	
		WAYNE CIR.	
		STA 3+00.00 TO STA 5+94.57	
<small>Baughman Company, P.A. 315 E. St. Wichita, KS 67211 P 316-267211 F 316-262049</small>			
<small>ENGINEERING SURVEYING PLANNING LANDSCAPE ARCHITECTURE</small>			
PROJECT NUMBER 472-84049	DESIGN MWS	DRAWN TMS	DATE 11/04
REVISIONS	APPROVED	SCALE Noted	SHEET
			6 OF 16
<small>MyHouse/St3</small>		<small>04-05-E879</small>	