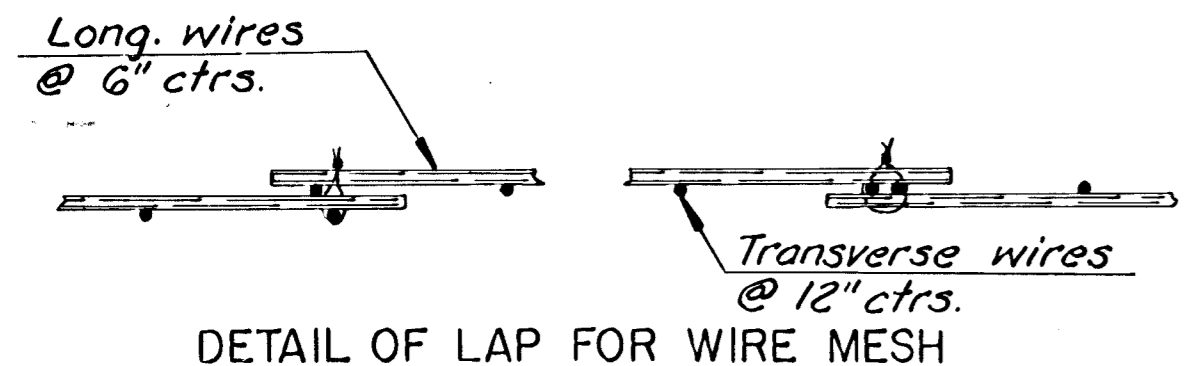


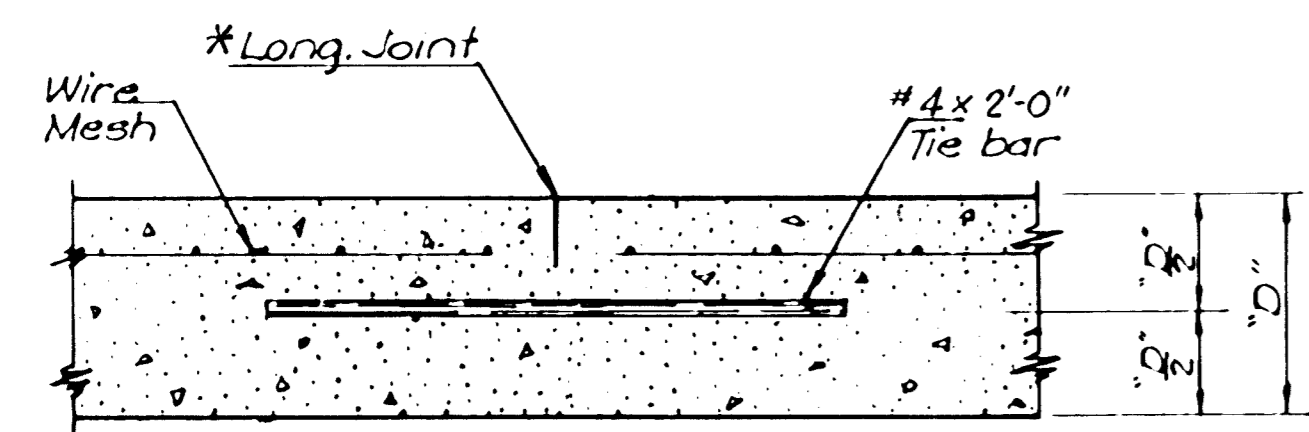
CITY	STATE	PROJECT NO.	FISCAL YEAR	SHEET NO.	TOTAL SHEETS
WICHITA	KANSAS	*	1982	11	22

\* 472-76-245-81101-000-000-001



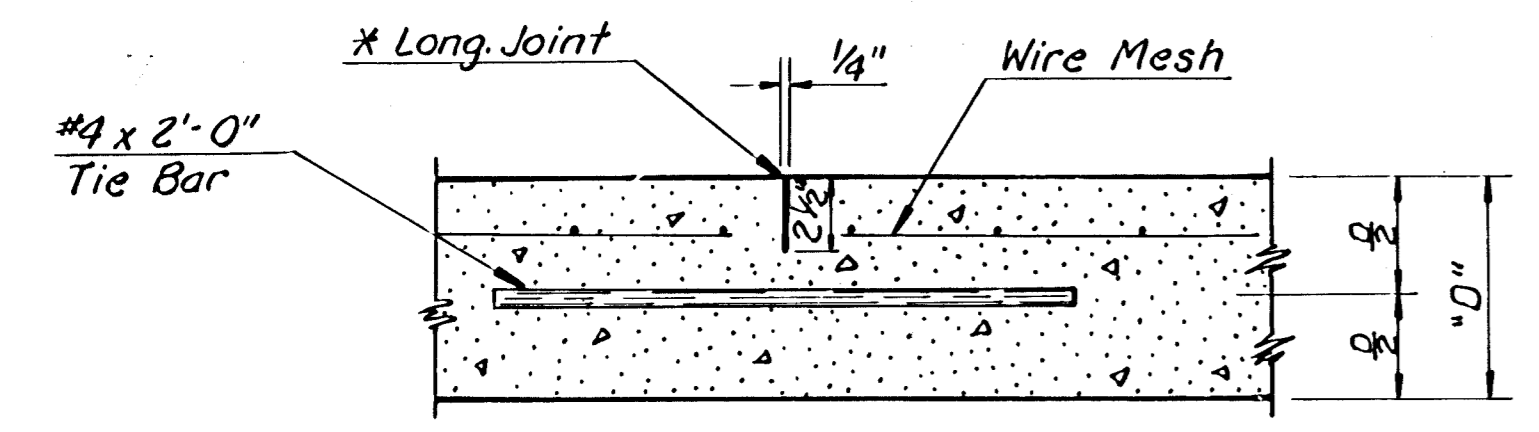
NOTE: The lap shall extend beyond the first transverse wire of each sheet.  
The sheets shall be wired securely at the edges and at intervals not to exceed 2'-6" for the full width of the sheet. Approx. weight of wire mesh = 44 lbs. per 100 sq. ft.  
Other methods for fastening the sheets of wire mesh at the laps may be used with the approval of the Engineer.

\* See special provisions for type of longitudinal joint for each project.



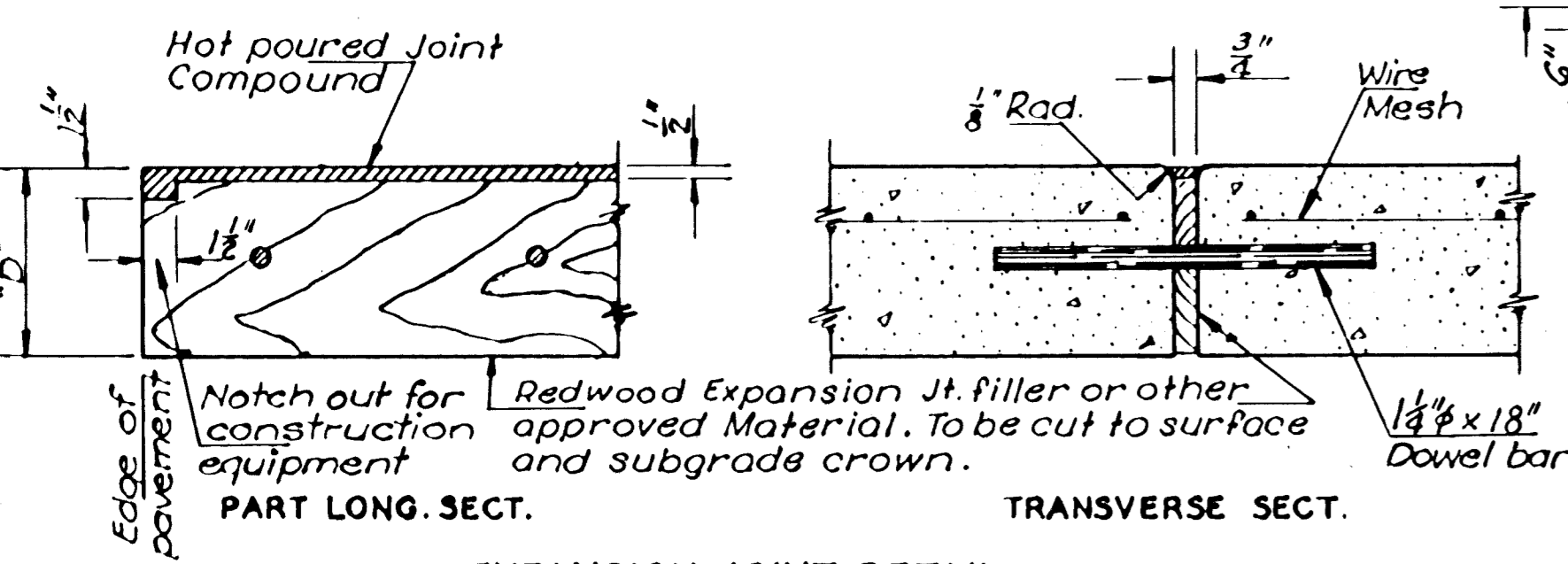
LONGITUDINAL JOINT DETAIL TRANSVERSE SECTION

NOTE: A lineal polyethylene or polyolefin (semi-rigid) 3" (nominal), 20 mil. (.020"), strip shall be inserted vertically into the fresh concrete pavement by approved methods.



LONGITUDINAL JOINT DETAIL TRANSVERSE SECTION

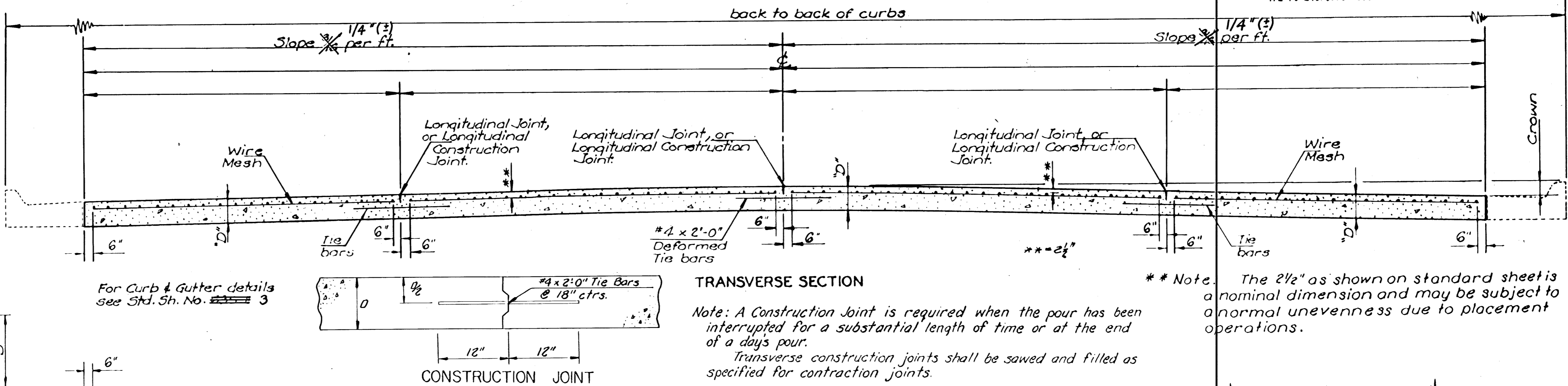
NOTE: Longitudinal joint formed by sawing 2 1/2" deep and 1/4" wide and filled as specified in special provisions.  
There may be a tolerance of 10 feet in setting the basket at the end of the pour; that is, the contraction joint may be not less than 20'-0" or more than 40'-0" at the end of the pour.  
See Std. No. 720.1 & 735.1 for Contraction Joint Details.



EXPANSION JOINT DETAIL (Except for load transfer devices)

NOTE: Pressure Relief Joints (without load transfer devices) shall be placed at the ends of the pavement slab where the new pavement abuts the ends of bridges or other rigid structures. For details of Pressure Relief Joint at bridge ends, see Std. No. 718A, 718B or 719.  
Unless otherwise noted, load transfer devices as shown in detail on other standard sheets in the plans, shall be used at all expansion & contraction joints.

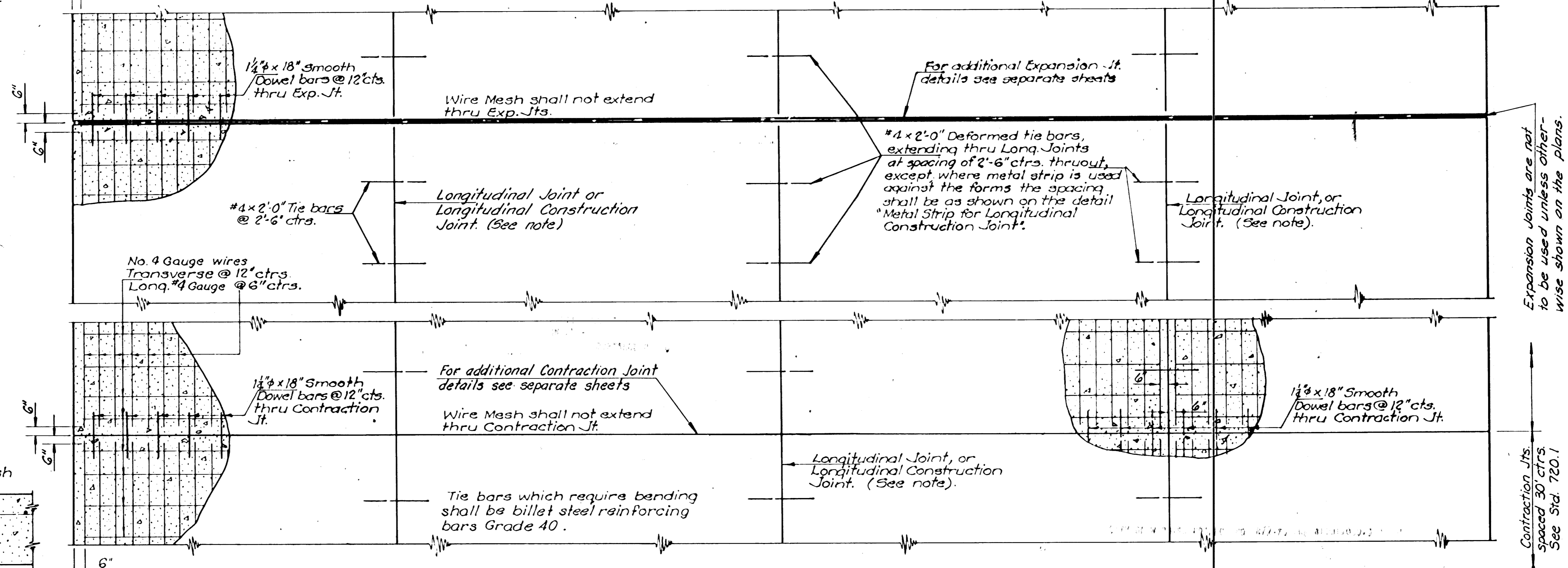
NOTE: Traffic Markers to be painted by the State City



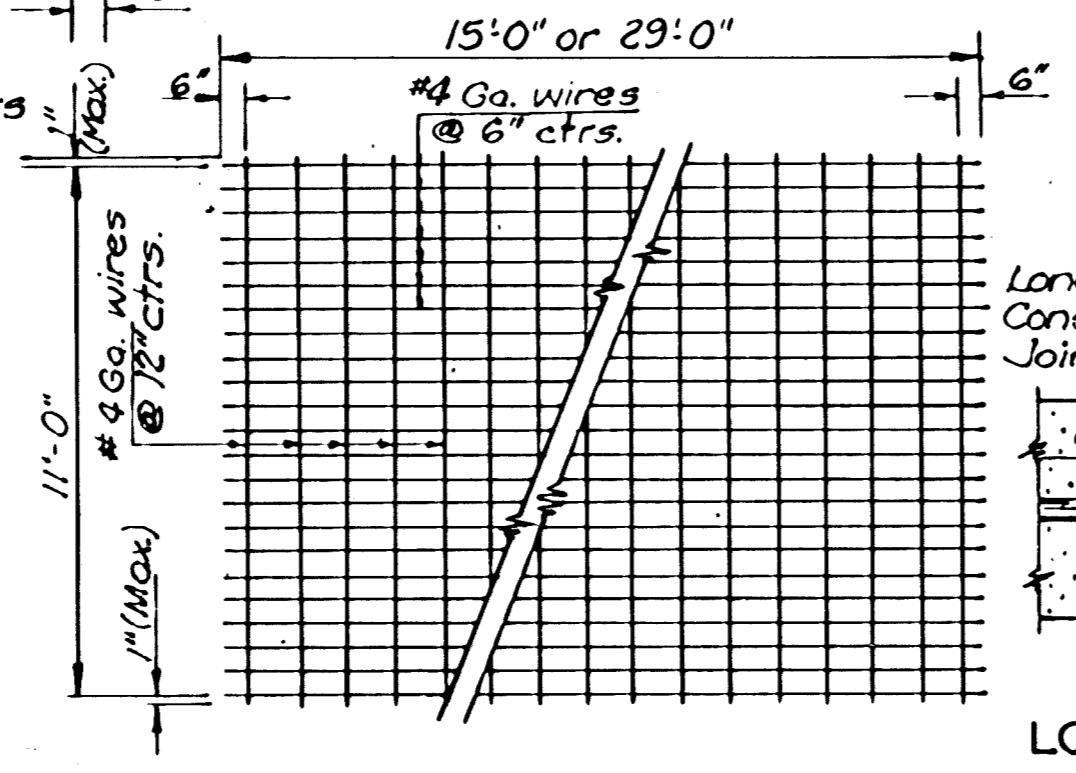
TRANSVERSE SECTION

Note: A Construction Joint is required when the pour has been interrupted for a substantial length of time or at the end of a days pour.  
Transverse construction joints shall be sawed and filled as specified for contraction joints.

\*\* Note. The 2 1/2" as shown on standard sheet is a nominal dimension and may be subject to a normal unevenness due to placement operations.



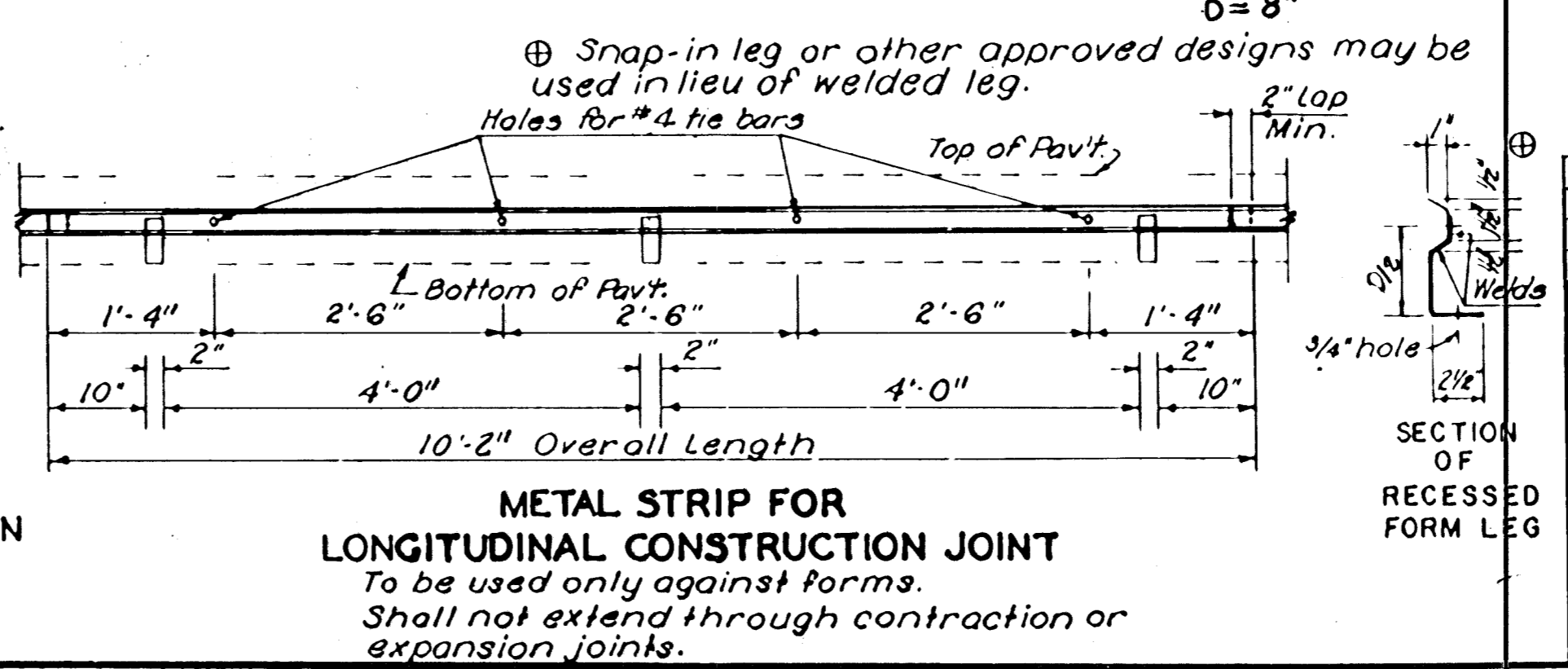
PLAN



TYPICAL SHEET OF WELDED WIRE MESH (See note)



LONGITUDINAL CONSTRUCTION JOINT DETAIL TRANSVERSE SECTION



METAL STRIP FOR LONGITUDINAL CONSTRUCTION JOINT To be used only against forms. Shall not extend through contraction or expansion joints.

NO.	DATE	REVISIONS	BY	APP'D.
34	8-5-81	Added Const Joint Detail & Note	W.L.H.	L.R.P.
33	3-10-81	Changed length of metal strip 10'-2"	W.L.H.	L.R.P.
32	9-25-80	Added sawed longitudinal joint	W.L.H.	L.R.P.
31	6-4-80	Polyethylene or polyolefin strips	W.L.H.	L.R.P.

KANSAS DEPARTMENT OF TRANSPORTATION  
**CONCRETE PAVEMENT**

FOUR LANE WIDTH

DESIGNED BY: WAB  
CHECKED BY: CAR  
QUANTITIES BY: WAB  
TRACE CR