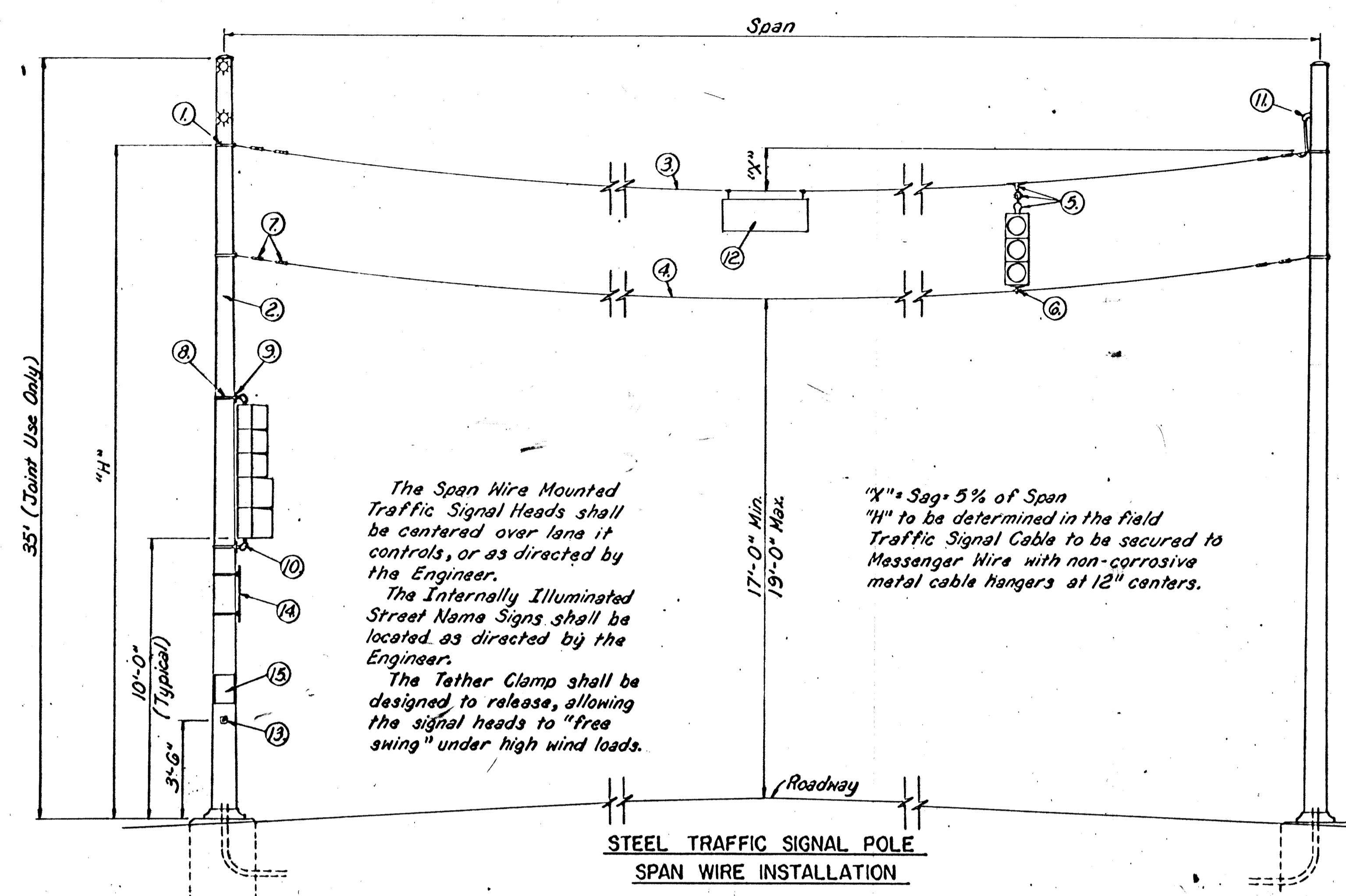


PROJECT NO.	FISCAL YEAR	SHEET NO.	TOTAL SHEETS
#	1982	15	22

* 472-76-245-81101-000-000-001



The Span Wire Mounted Traffic Signal Heads shall be centered over lane it controls, or as directed by the Engineer.

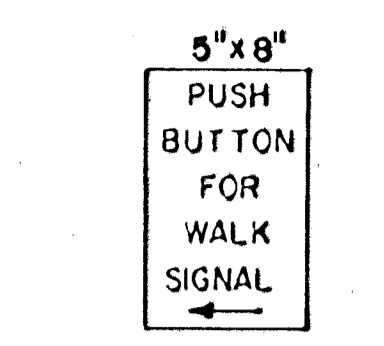
The Internally Illuminated Street Name Signs shall be located as directed by the Engineer.

The Tether Clamp shall be designed to release, allowing the signal heads to "free swing" under high wind loads.

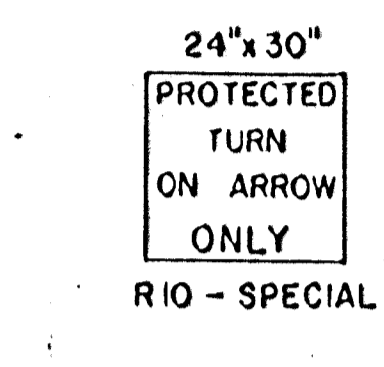
"X" = Sag 5% of Span
 "H" to be determined in the field
 Traffic Signal Cable to be secured to Messenger Wire with non-corrosive metal cable hangers at 12" centers.

STEEL TRAFFIC SIGNAL POLE
SPAN WIRE INSTALLATION

See Detail this sheet for Concrete Base



5" x 8"
PUSH
BUTTON
FOR
WALK
SIGNAL
RIO-4
SIGN DETAIL



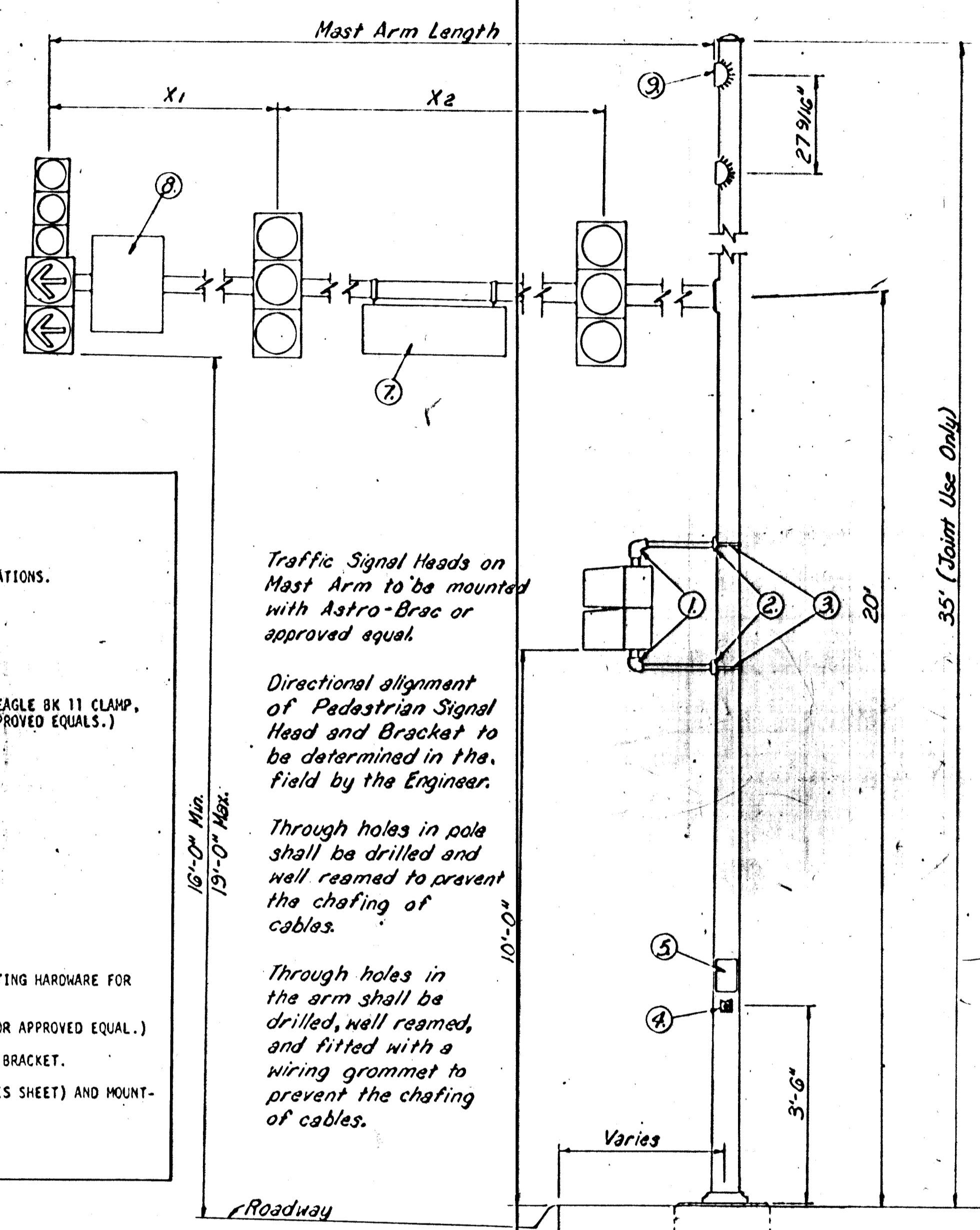
24" x 30"
PROTECTED
TURN
ON
ARROW
ONLY
RIO-SPECIAL
SIGN DETAIL
Note: These signs to be furnished by the City of Wichita & installed by the Contractor.

SPAN WIRE INSTALLATION

1. STEEL POLE CLAMP FOR SPAN WIRE.
2. STEEL TRAFFIC SIGNAL POLE (GALV.) AS PER SPECIFICATIONS.
3. 3/8" DOUBLE GALV. STEEL MESSENGER WIRE SEVEN STRAND - HIGH STRENGTH.
4. 1/4" DOUBLE GALV. STEEL TETHER WIRE SEVEN STRAND - STD. STRENGTH.
5. TRAFFIC SIGNAL HEAD SPAN WIRE MOUNTING HARDWARE (EAGLE BK 11 CLAMP, BK 12 BALANCE ADJUSTER, BK 13 WIRE ENTRANCE OR APPROVED EQUALS.)
6. TETHER WIRE CLAMP.
7. 3-BOLT, GALV. WIRE CLAMP (6").
8. 3/4" STAINLESS STEEL BANDING.
9. POLE MOUNTING BRACKET. (EAGLE U-1169 OR APPROVED EQUAL.)
10. TRAFFIC SIGNAL HEAD VERTICAL BRACKET. (EAGLE FR1J OR APPROVED EQUAL.)
11. WEATHERHEAD
12. INTERNALLY ILLUMINATED STREET NAME SIGN WITH MOUNTING HARDWARE FOR SPAN WIRE MOUNT. (SEE SPECIFICATIONS)
13. PEDESTRIAN ACTUATED PUSHBUTTON (VEPED NO. 0-PD-1 OR APPROVED EQUAL.)
14. "PROTECTED TURN ON ARROW ONLY" SIGN WITH MOUNTING BRACKET.
15. "PUSH BUTTON FOR WALK SIGNAL" SIGN (SEE DETAIL THIS SHEET) AND MOUNTING HARDWARE.

MAST ARM INSTALLATION

1. TRAFFIC SIGNAL HEAD VERTICAL BRACKET FOR SIDE-OF-POLE MOUNTING. (EAGLE TYP: FR2J FOR MOUNTING 2 PEDESTRIAN SIGNAL HEADS OR APPROVED EQUAL.)
2. POLE MOUNTING BRACKET. (EAGLE TYPE U-1169 OR APPROVED EQUAL.)
3. 3/4" STAINLESS STEEL BANDING.
4. PEDESTRIAN ACTUATED PUSHBUTTON (VEPED NO. 0-PD-1 OR APPROVED EQUAL.)
5. "PUSH BUTTON FOR WALK SIGNAL" SIGN (SEE DETAIL THIS SHEET) AND MOUNTING HARDWARE.
6. TRAFFIC SIGNAL HEAD BRACKET FOR MAST ARM MOUNTING. (VEPED ASTRO-BRAC OR APPROVED EQUAL.) (THE ASTRO-BRAC MOUNT FOR THE 5 SECTION SIGNAL HEAD SHALL BE ABLE TO ACCOMMODATE A STACK HEIGHT OF 60".)
7. INTERNALLY ILLUMINATED STREET NAME SIGN WITH MOUNTING HARDWARE (SEE SPECIFICATION).
8. "PROTECTED TURN ON ARROW ONLY" SIGN WITH MOUNTING HARDWARE.
9. LUMINAIRE MOUNTING BRACKET AS PER SPECIFICATIONS. (SIMPLEX FITTING)



STEEL TRAFFIC SIGNAL POLE
WITH MAST ARM

See Detail this sheet for Concrete Base.

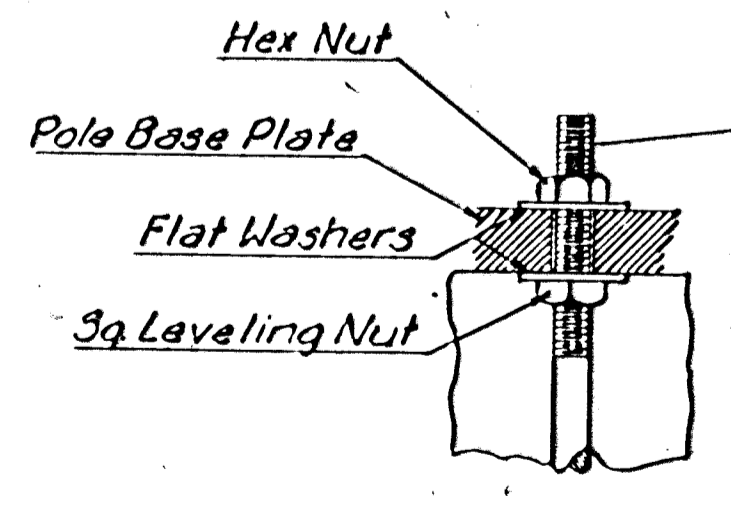
Use Keystone "No-weld Number 1 Anti-seize Compound" on all mounting & anchor bolts.

The Contractor shall contact the Engineer 24 hours prior to pouring any pole base or controller pad.

Conduit extensions above base shall have a plastic or metal rim bushing to prevent the chafing of cables.

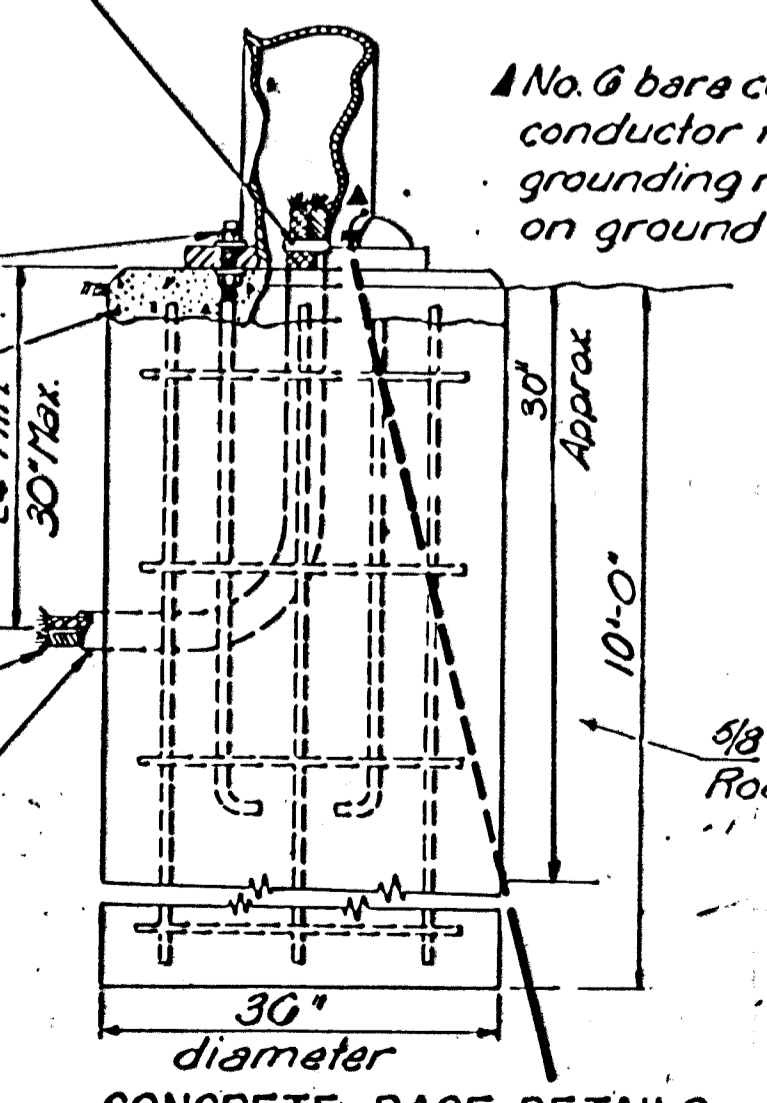
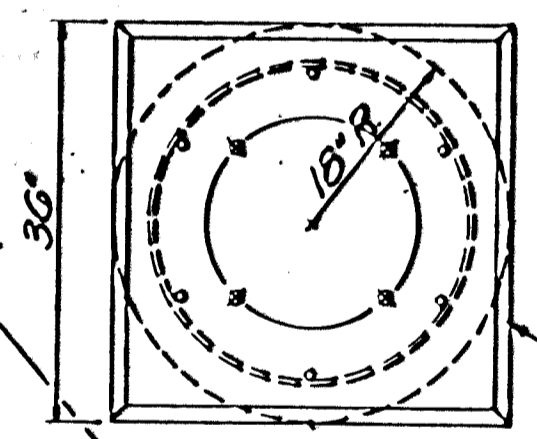
Place 6" thick square concrete cap after pole has been erected and plumbed.

No. 6 bare copper ground conductor from internal grounding nut to clamp on ground rod.

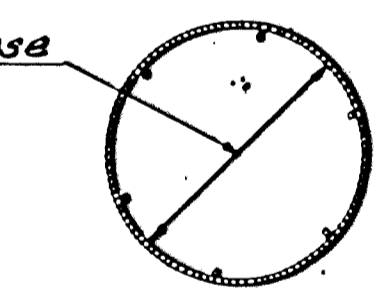


ANCHOR BOLT
DETAIL

Note: The anchor bolts for the signal pole shall be welded to the rebar cage to secure them in a vertical position while the base is being poured. Class I Concrete shall be used to construct the concrete base.



CONCRETE BASE DETAILS



REBAR CAGE
DETAIL

STEEL TRAFFIC SIGNAL POLE
& CONCRETE BASE DETAILS

DEPARTMENT OF ENGINEERING
TRAFFIC ENGINEERING SECTION

Designed by	Checked by
Drawn by	Date
	Job No.