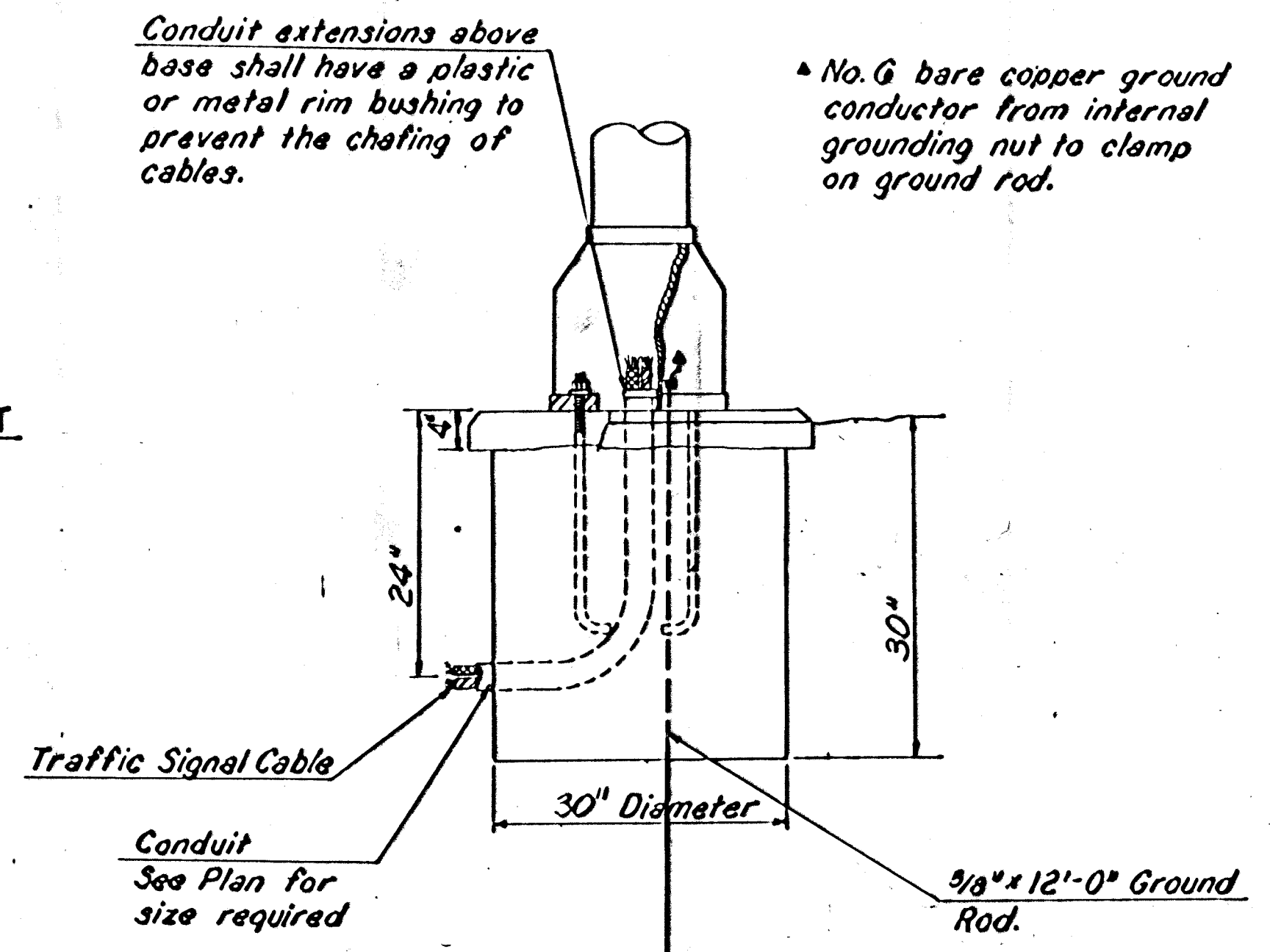
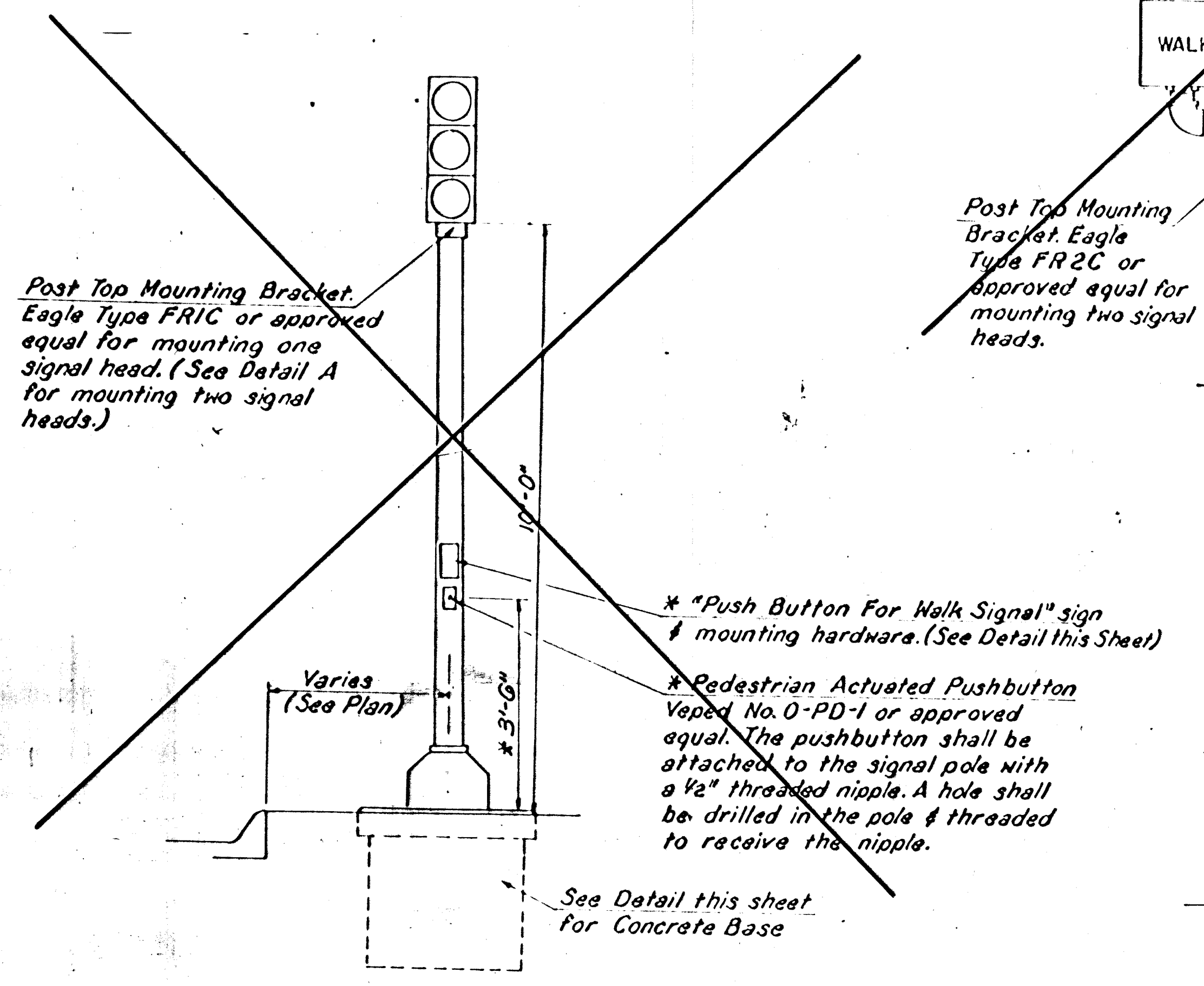


ANCHOR BOLT
DETAIL

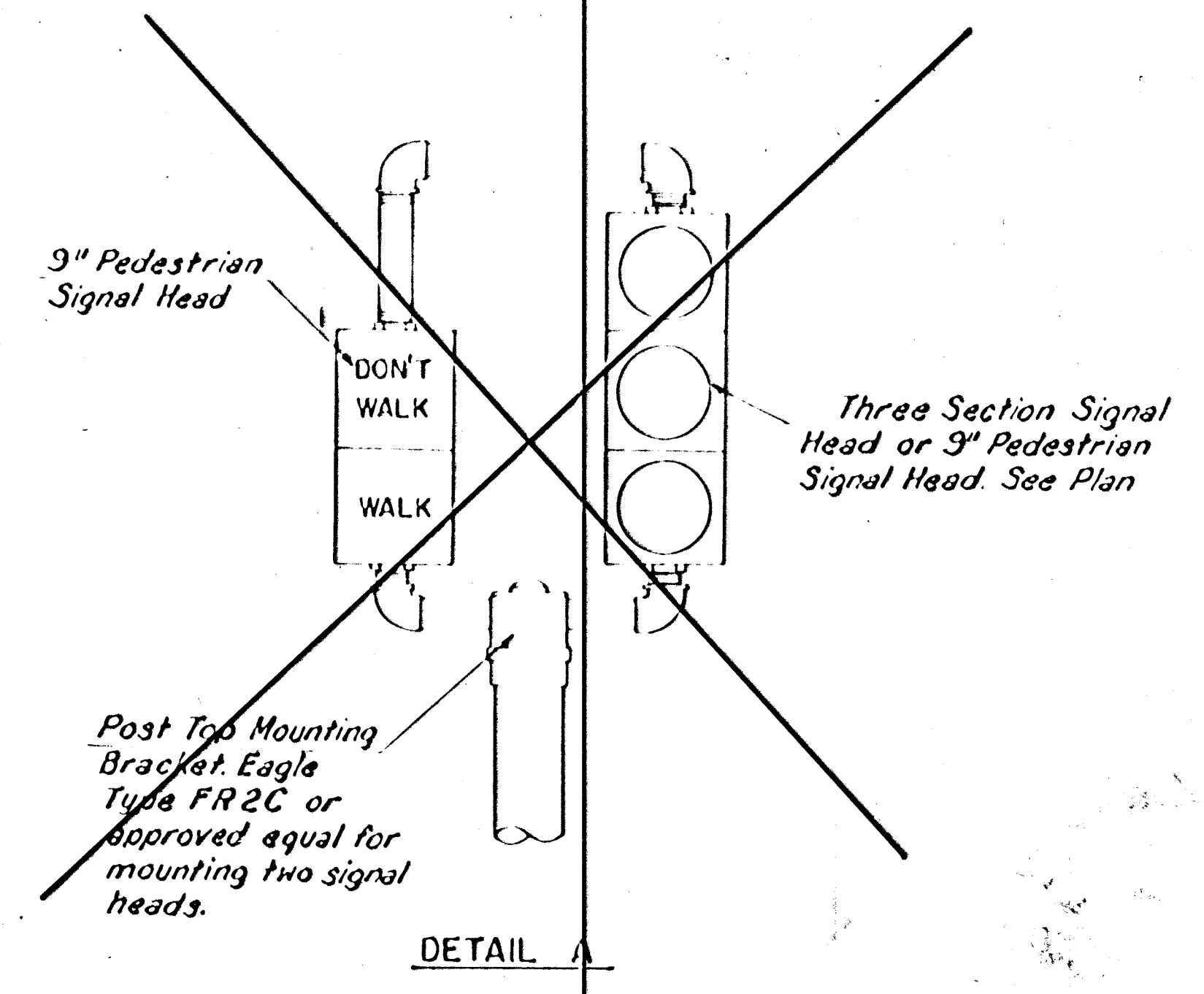


CONCRETE BASE DETAILS

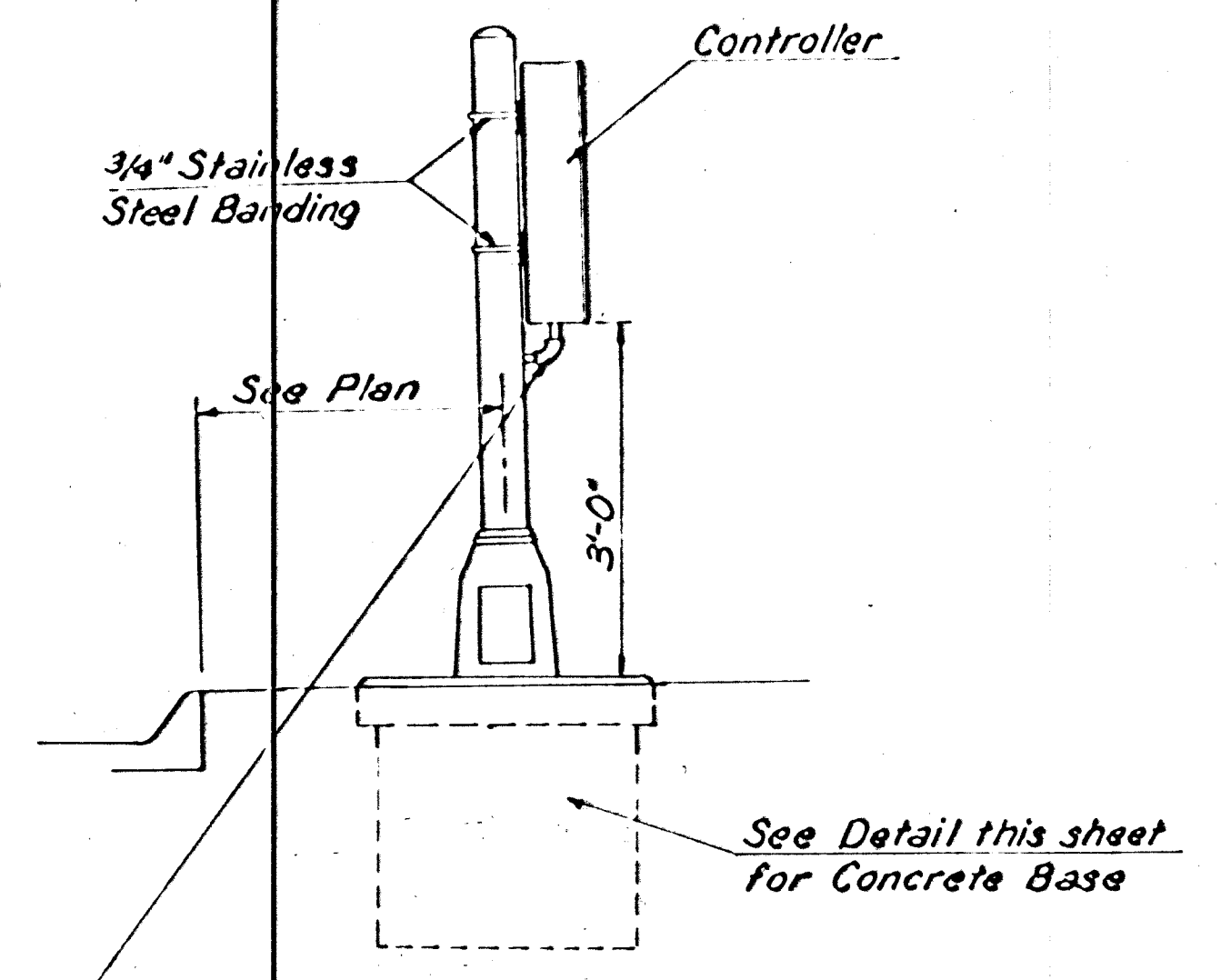
Class I Concrete shall be used to construct the concrete base.
Use Keystone "No-Weld Number 1 Anti-Seize Compound" on all anchor bolts & nuts.



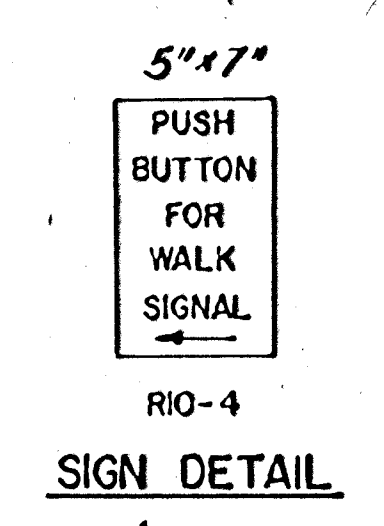
TRAFFIC SIGNAL PEDESTAL



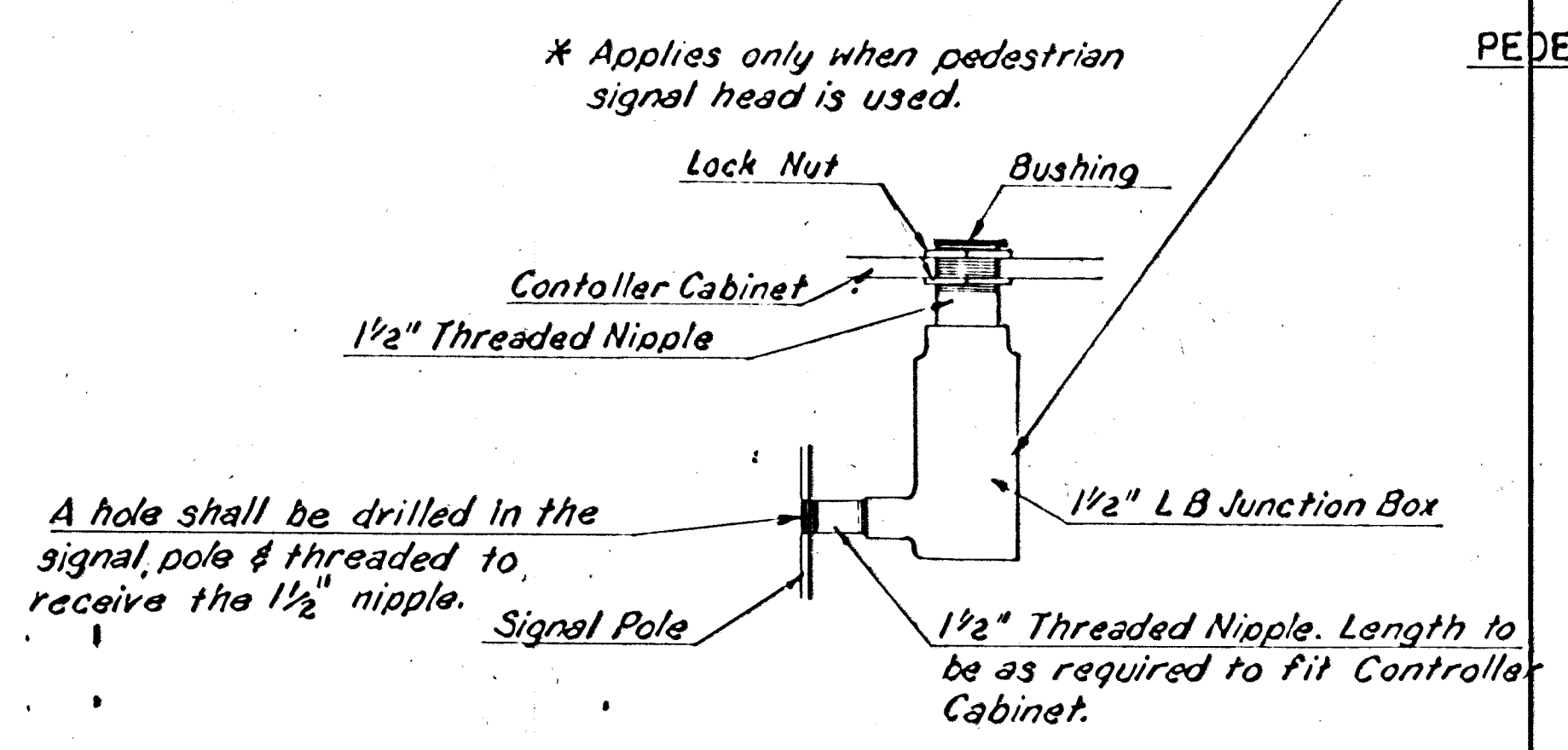
DETAIL A



PEDESTAL MOUNTED CONTROLLER



Sign shall be mounted with 2-1/2" 1/4" x 20 "vandal proof" screws. A hole shall be drilled in the pole & threaded to receive each screw.



TRAFFIC SIGNAL PEDESTAL & CONCRETE BASE DETAILS

DEPARTMENT OF ENGINEERING
TRAFFIC ENGINEERING SECTION

Designed by	Checked by
Drawn by	Date
	Job No.