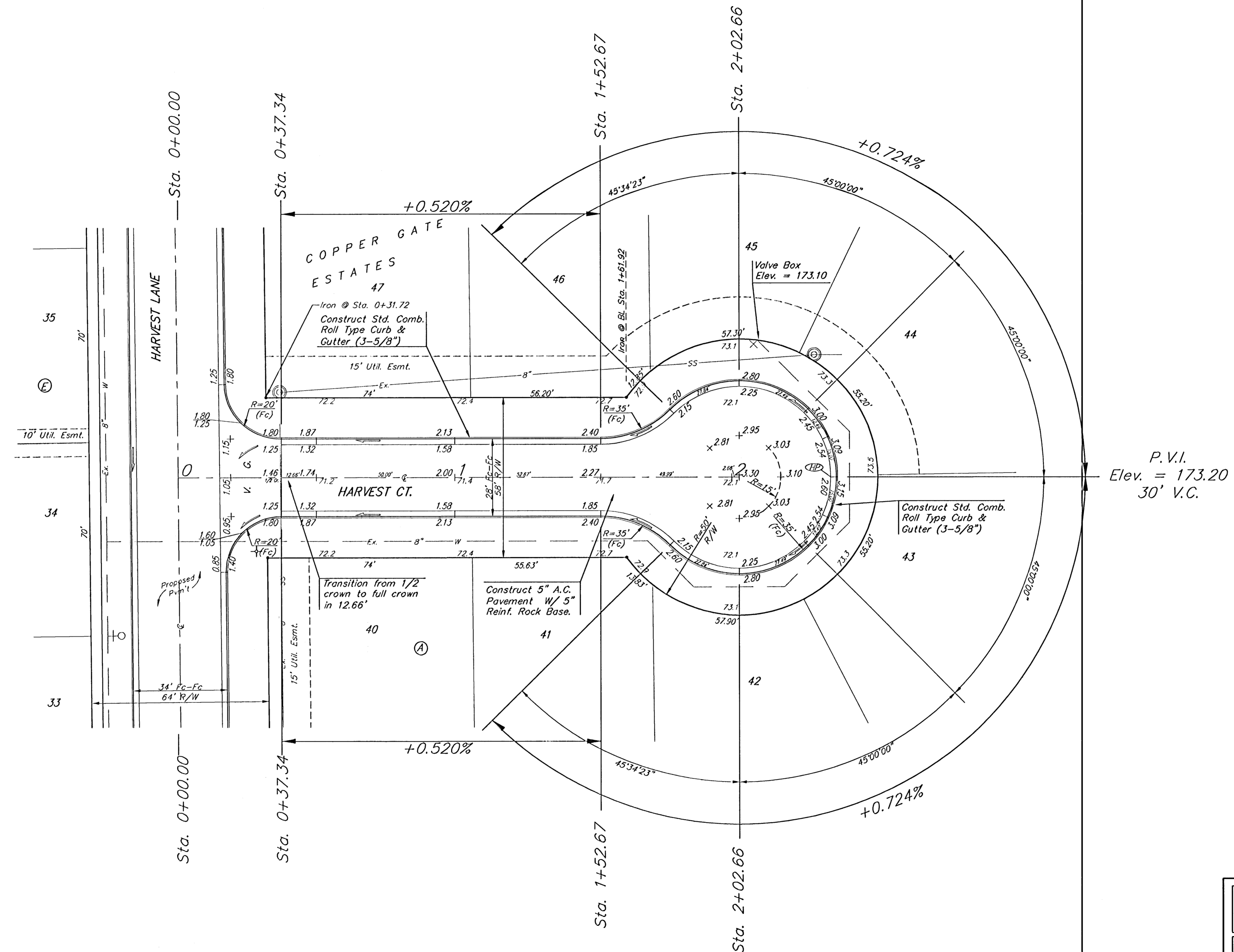
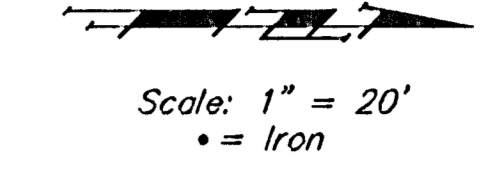


BENCHMARK:
 City of Wichita benchmark at
 the SE corner of intersection
 of 135th Street West and 13th
 Street North.
 Elev. = 167.83 (City Datum)

Brass Benchmark Disc
 Adjacent to Fire Hydrant at E.
 End of E. Curb Return of
 Ponderosa & Ponderosa Ct.
 Elev. = 170.96 (City Datum)



NOTE: ROLL TYPE CURB & GUTTER TO BE CONSTRUCTED ON THE PAVEMENT SHOWN ON THIS SHEET. TOP OF CURB ELEVATIONS ARE GIVEN FOR FULL HEIGHT CURB.

Baughman		Copper Gate Estates - Phase III	
HARVEST CT.		STA. 0+00 TO STA. 2+02.66	
Baughman Company, P.A. 315 E. 10th St. Wichita, KS 67211 P 316-262-7771 F 316-262-0149			
ENGINEERING SURVEYING PLANNING LANDSCAPE ARCHITECTURE			
PROJECT NUMBER 472-83671	DESIGN NBW	DRAWN TMS	DATE 4/13/05
REVISIONS:	APPROVED	DATE	4/13/05
	SCALE Noted	SHEET	
	10 OF 30		
CopperGatePhase3\Sta5.dwg		04-06-E956	