

**GENERAL NOTES:**

- Contractor will be required to provide notice to utility companies a minimum of twenty-four (24) hours prior to any excavation, as follows:  
 Kansas One-Call 687-2470  
 The Contractor must notify the following in case of an emergency:  
 Cox Communications 262-4270  
 Kansas Gas Service 1-888-482-4950  
 Westar Energy 383-8650  
 Aquila Energy 1-800-303-0357  
 SBC 268-2245  
 City of Wichita Water Dept. 268-4563  
 City of Wichita Sewer Maint. 268-4024  
 City of Wichita Storm Sewer Maint. 268-4030  
 City of Wichita Traffic Maint. 268-4034  
 Conoco Pipeline Co. 1-800-231-2851  
 Southern Star Pipeline Co. 529-6600  
 Phillips Pipeline Co. 1-800-766-8230  
 Jayhawk Pipeline Co. 1-888-542-9575
- Utility service lines, poles, valve boxes, meters, and etcetera are to be adjusted as necessary by others prior to construction unless the plans specifically call for their adjustment by the Contractor or unless the plans specifically identify a utility to be adjusted by its owner during construction. Existing utilities and their location, as shown on the plans, represent the best information obtainable for design. The contractor will be required to work around existing utilities within the right-of-way which do not conflict with proposed construction.
- Trees and shrubs in public right-of-way which are in direct conflict with proposed new construction shall be removed by the Contractor with the Engineer's approval. Trees and shrubs which are not in direct conflict with proposed new construction shall be saved and protected from damage.
- All areas disturbed during construction within Reserves and Street R/W's adjacent to existing pavement shall be seeded, mulched, and fertilized as follows unless otherwise noted (Permanent Seeding):  
 Seed: Kansas Premium Fescue Blend: 8 lbs./1000 sq. ft.  
 Mulch: Prairie Hay: 2 tons/acre  
 Fertilizer: 12-24-12: 850 lbs./acre  
 All other areas disturbed during construction shall be seeded and mulched as follows (Temporary Seeding):  
 Seed: Rye Grass: 5 lbs./1000 Sq. Ft.  
 Mulch: Prairie Hay: 2 tons/acre  
 All costs associated with seeding, mulching, and fertilizing shall be included in bid item "Project Seeding." All seeding operations shall conform to City of Wichita Standard Specifications.
- Rubble from the removal of miscellaneous structures and excess excavation which is to be wasted shall be disposed of on sites to be provided by the Contractor. These sites shall be approved by the Engineer as to suitability, appearance and site location. Locations that, in the opinion of the Engineer, will leave an unsightly appearance will not be approved. All disposal sites must be approved by the Kansas Department of Health and Environment. Material either stockpiled or disposed of in a flood plain would a Kansas State Board of Agriculture permit. Any material dumped in waters of the United States or wetlands is subject to U.S. Corps. of Engineers permitting regulations. Any material buried or stockpiled beyond approved construction limits would require additional archaeological investigations unless buried in a previously approved borrow location.
- The Contractor shall be responsible for preserving property irons. The Contractor will be required to re-establish any property irons which are damaged or destroyed by his construction operations. Such irons shall be re-established by a licensed land surveyor in accordance with state law.
- A saw cut of at least one-half the depth of existing surface courses of one-fourth the depth of the existing total pavement thickness shall be provided at locations where proposed construction abuts an existing surface course or pavement for which partial removal of that surface or pavement is required. Sawed joint to facilitate removal within three (3) feet of existing joints will not be permitted and for such instances the limits of removal shall extend to the existing joint. Such saw cuts will not be paid for directly and this cost shall be considered as subsidiary to the removal of the surface or pavement.
- All existing and proposed erosion control measures including silt fencing, erosion control mat, straw bales, inlet barriers, and const. entrance shall be maintained throughout construction by the contractor and until project is accepted by the City of Wichita. The on-site engineer shall complete weekly reports on the status of erosion control measures. The contractor shall be required to comply with maintenance and/or replacement of erosion control measures as determined by the on-site engineer until project is accepted by City of Wichita. Maintenance and/or replacement of erosion control measures to be paid by L.S. bid item "Erosion Control BMP's."
- The developer for this project is Ritchie Associates, Inc. Rob Ramsayer, V.P., may be reached at (316) 684-7300.

**STREET PAVING FOR N. 127TH CT. E.**  
to serve

**THE FAIRMONT 3RD ADD. - PH. I**

N. 127th Ct. E. from the east line of the plat west to and including the cul-de-sac

**CITY OF WICHITA, KANSAS**

James L. Armour, P.E. Acting City Engineer

Project Number

**472-84136**

O.C.A. Number

**765919**

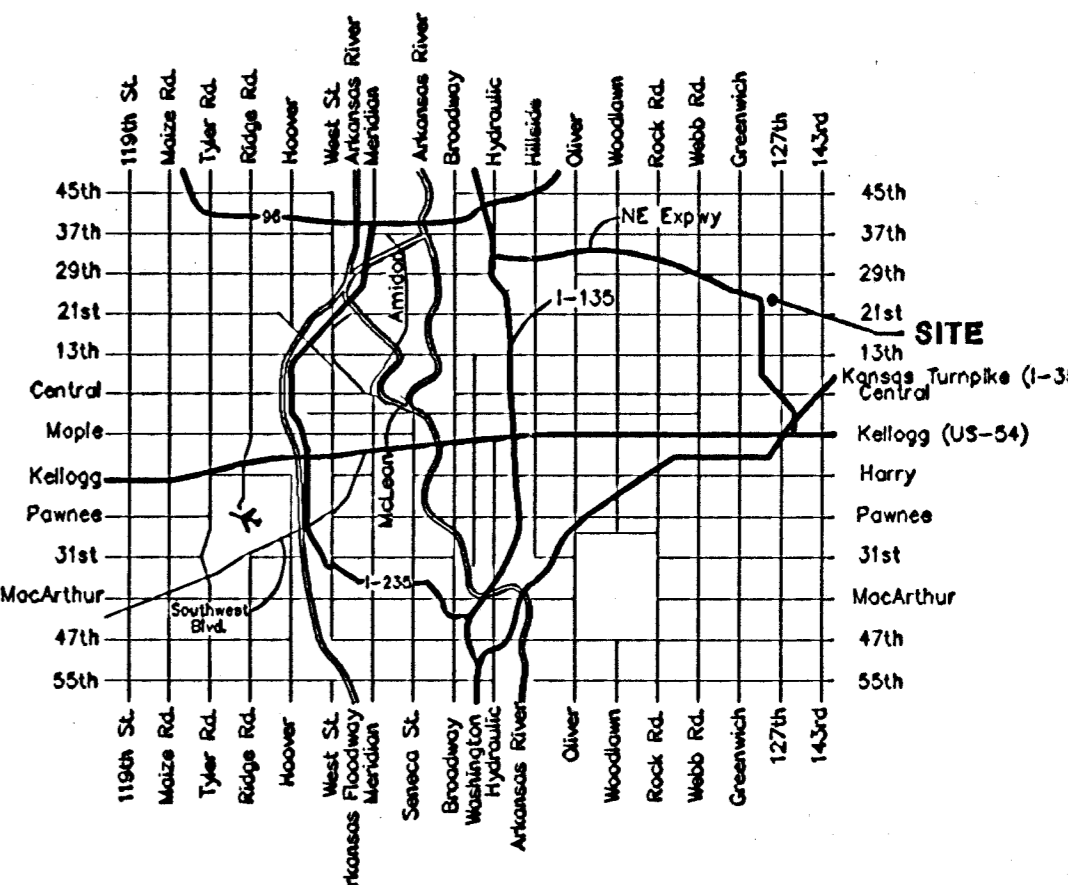
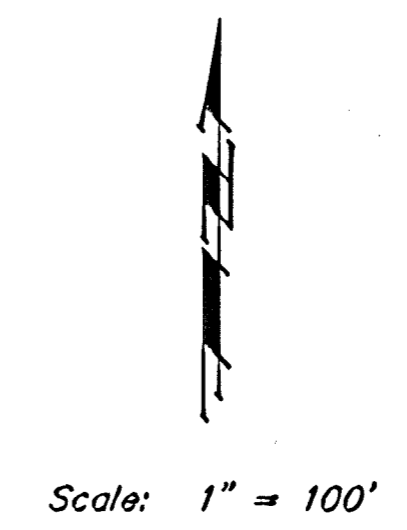
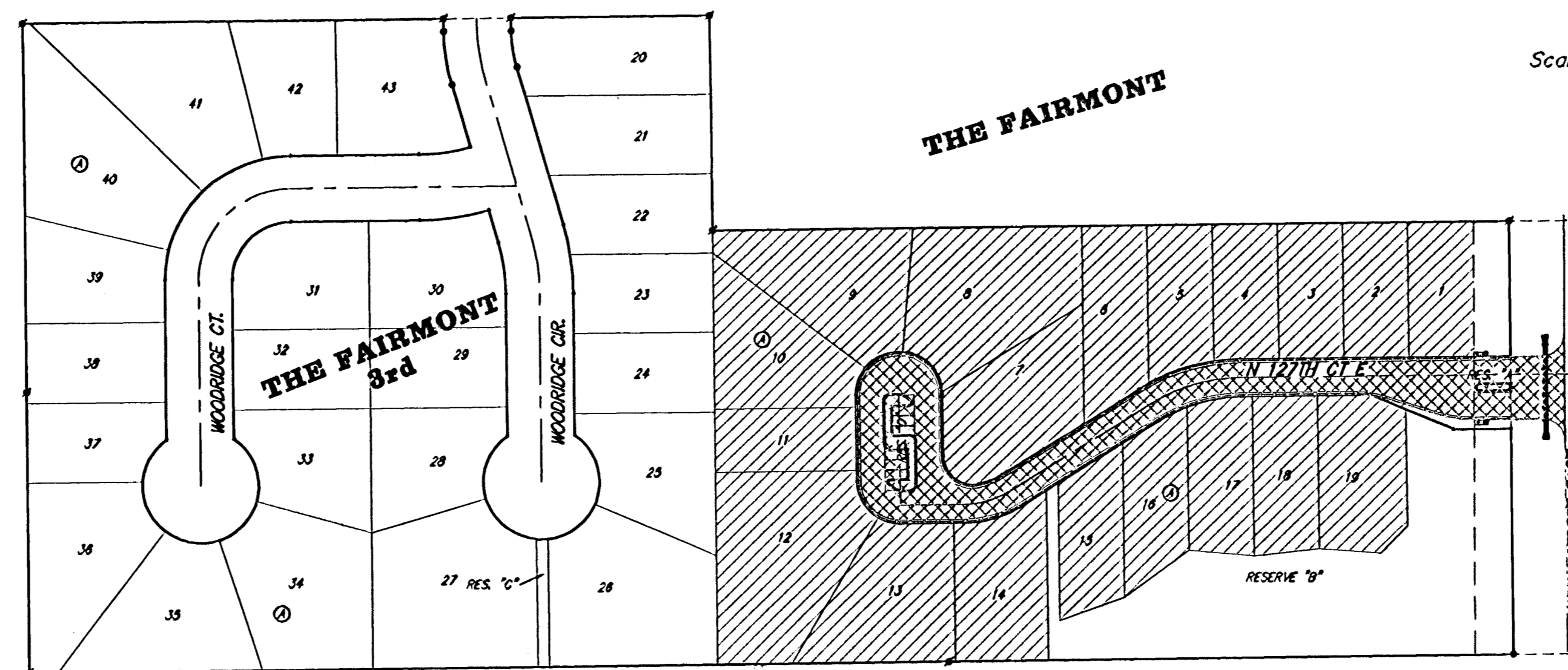
**Benchmark**

BM #1: Cross on South West Corner of Lot 25 Block H, The Fairmont Addition.  
Elev. = 204.61 (City Datum)

BM #2: "a" Cut on Curb at North East Entrance to Church of the Magdalen 2nd Addition.  
Elev. = 190.48 (City Datum)

**Sheet Index**

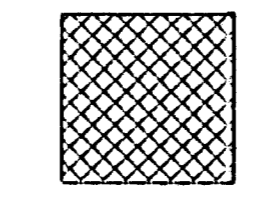
Title Sheet	1
31' Pavement Detail	2
Sign Detail	3
Entrance Detail	4
N. 127th Ct. E.	5-6
Erosion Control Plan	7
Erosion Control BMP's	8-11
Earthwork Cross Sections	12-14
Copy of Plat	15



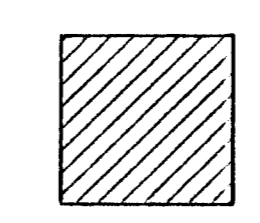
**CHURCH OF THE MAGDALEN 2ND ADDITION**

*Project Earthwork Totals*  
Excavation = 320 C.Y.  
Loose Fill = 167 C.Y.  
Compacted Fill = 16 C.Y.  
*Total Project Length*  
614 L.F. = 0.12 Miles

**Proposed Streets:**



**Benefit District:**



**Vicinity Map**

As Built 6/21/13 K.K.



Baughman Company, P.A. 315 Ellis St. Wichita, KS 67211 P 316-262-7271 F 316-262-0144  
ENGINEERING | SURVEYING | PLANNING | LANDSCAPE ARCHITECTURE