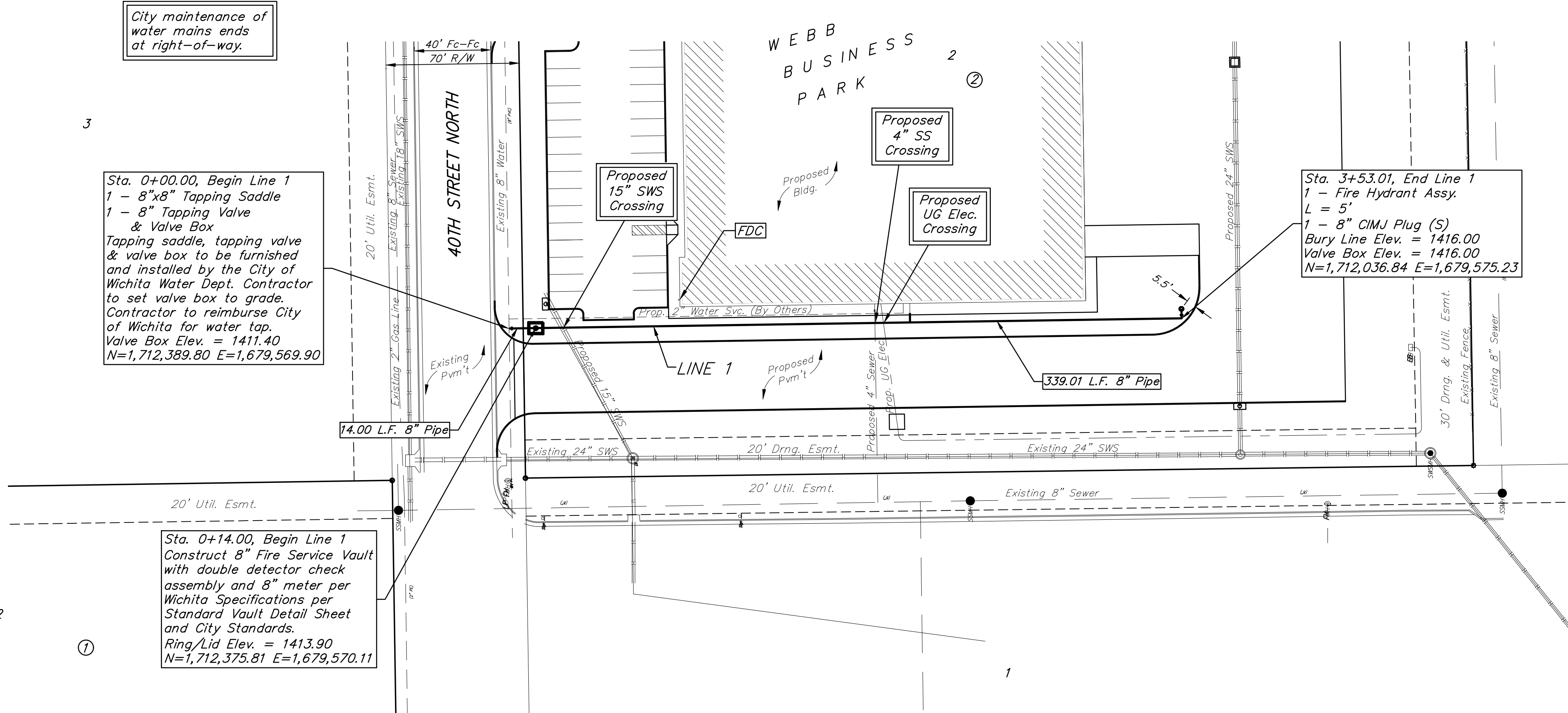
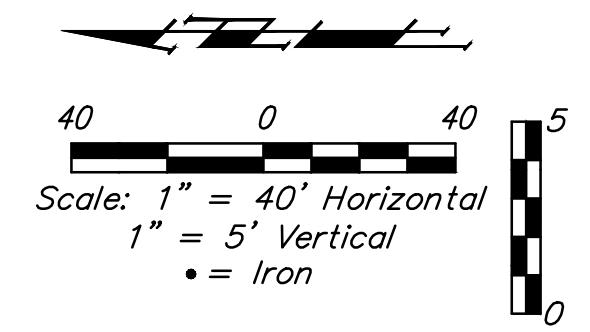




**BENCHMARKS:**  
 BM #1: Disc on Top of Curb, approximately 166.4' west and 67.1' north of the northeast corner of Lot 3, Block 2, Webb Business Park.  
 Elev. = 1420.32 (NAVD88)

BM #2: Disc on Top of Curb, approximately 230.9' west and 52.2' north of the northwest corner of Lot 2, Block 2, Webb Business Park.  
 Elev. = 1405.30 (NAVD88)

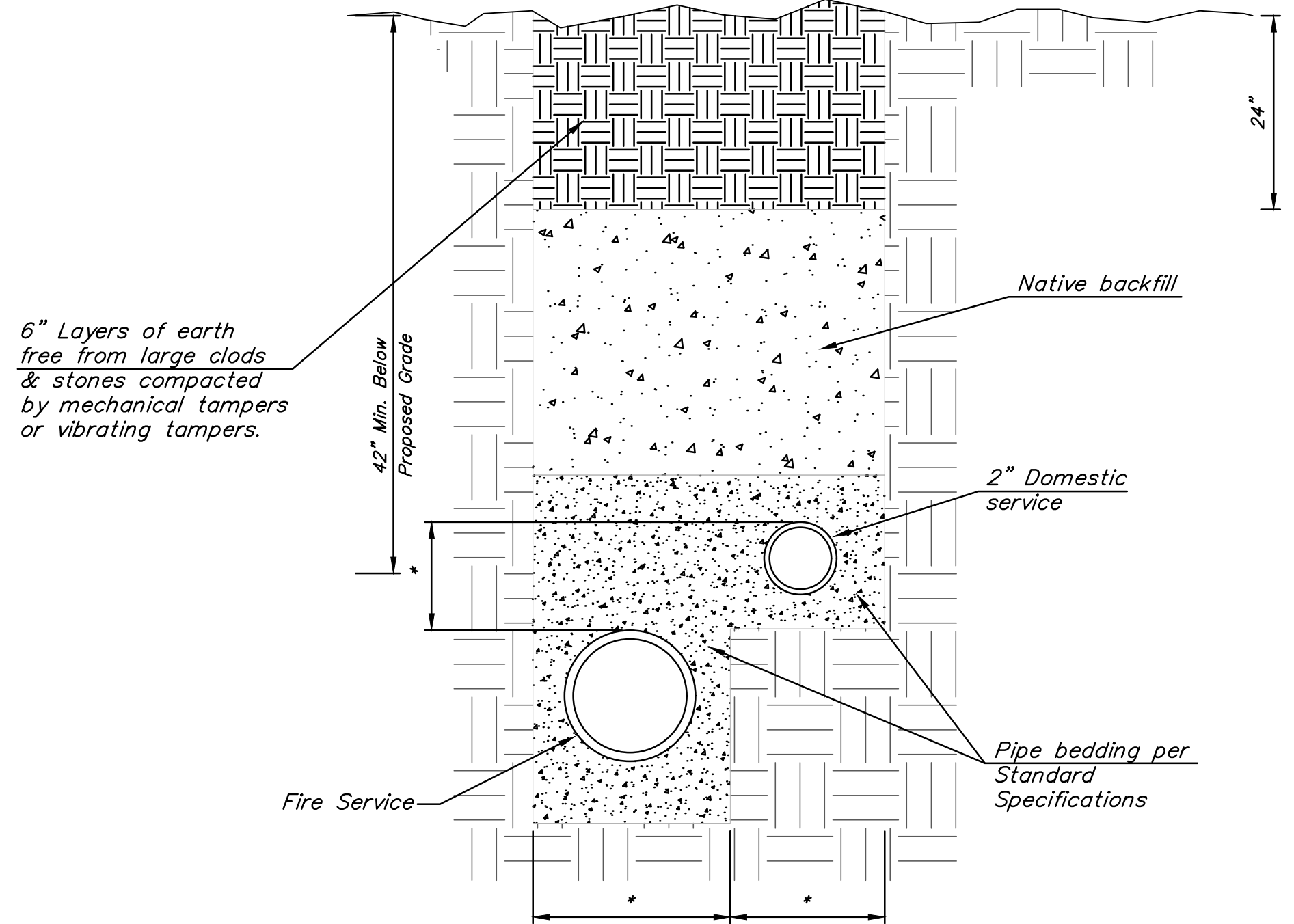
City maintenance of water mains ends at right-of-way.



When fire service and domestic water line installed in same trench, trench shall be compacted per detail, this sheet.

Sta. 0+00.00, Begin Line 1  
 1 - 8"x8" Tapping Saddle  
 1 - 8" Tapping Valve & Valve Box  
 Tapping saddle, tapping valve & valve box to be furnished and installed by the City of Wichita Water Dept. Contractor to set valve box to grade. Contractor to reimburse City of Wichita for water tap.  
 Valve Box Elev. = 1411.40  
 N=1,712,389.80 E=1,679,569.90

Sta. 0+14.00, Begin Line 1  
 Construct 8" Fire Service Vault with double detector check assembly and 8" meter per Standard Vault Detail Sheet and City Standards.  
 Ring/Lid Elev. = 1413.90  
 N=1,712,375.81 E=1,679,570.11



**COMBINED TRENCH SECTION & COMPACTION**

\*TRENCH SIZE AND STAIR STEP SHALL BE BASED ON THRUST BLOCK REQUIREMENTS AGAINST VIRGIN SOIL OR CONTRACTOR MAY OPT TO USE RESTRAINED JOINT PIPE MATERIAL.

DEPTH UNKNOWN  
 Contractor to Verify Depth & Location of Existing Water Line Prior to Construction.

Station	Description	Elevation
0+00.00	Begin Line 1	1435
0+00.00	1 - 8"x8" Tapping Saddle	1430
0+00.00	1 - 8" Tapping Valve & Valve Box	1425
0+00.00	Tapping saddle, tapping valve & valve box to be furnished and installed by the City of Wichita Water Dept. Contractor to set valve box to grade. Contractor to reimburse City of Wichita for water tap.	1420
0+00.00	Valve Box Elev. = 1411.40	1415
0+14.00	Begin Line 1	1410
0+14.00	Construct 8" Fire Service Vault with double detector check assembly and 8" meter per Standard Vault Detail Sheet and City Standards.	1405
0+14.00	Ring/Lid Elev. = 1413.90	1400
0+30.00	Line 1-PV	1395
1+00	Line 1-PV	1405
1+20.00	Line 1-PV	1410
2+00	Line 1	1415
3+00.00	Line 1-PV	1420
3+53.01	End Line 1	1425
3+53.01	1 - Fire Hydrant Assy.	1430
3+53.01	L = 5'	1435
3+53.01	1 - 8" CIMJ Plug (S)	1430
3+53.01	Bury Line Elev. = 1416.00	1425
3+53.01	Valve Box Elev. = 1416.00	1420

**BAUGHMAN COMPANY**  
 315 Ellis St.  
 Wichita, KS 67211  
 316-262-7271  
 BaughmanCo.com

WEBB BUSINESS PARK  
 Bldg. #3

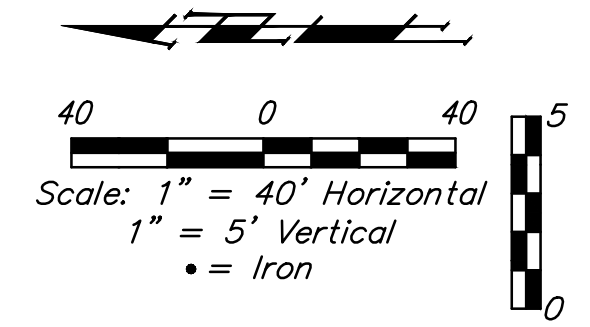
**LINE 1**

WATER DISTRIBUTION SYSTEM  
 PROJECT NUMBER:  
 DESIGN: TJW DRAWN: TMS  
 DATE: April 14, 2022  
 SHEET 2 OF 13

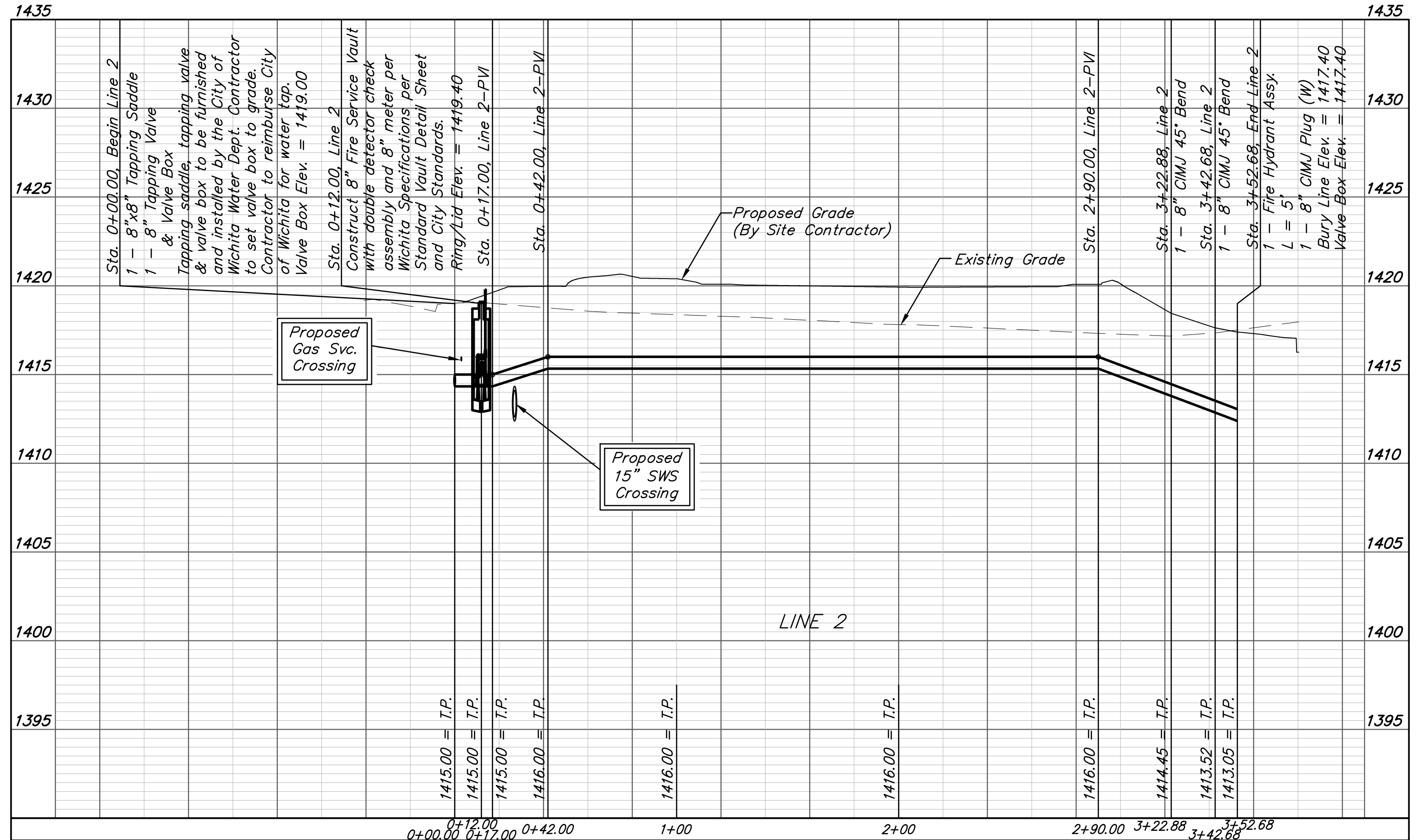
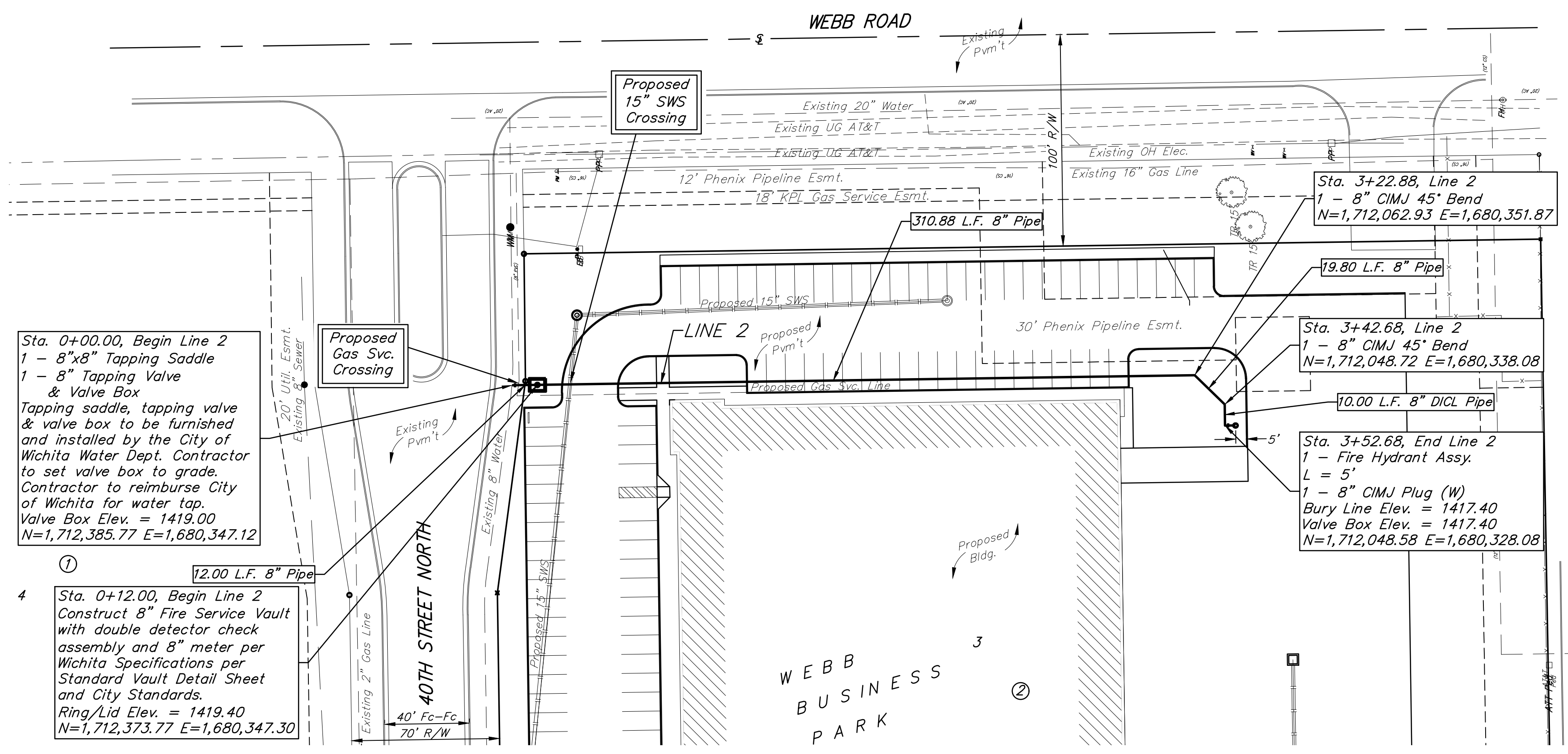
File: E:\Projects\Webb Business Park #3 - Lot 2 & 3\Engineering\Phase 1\PPWP\PPWP.dwg

**BENCHMARKS:**  
 BM #1: Disc on Top of Curb, approximately 166.4' west and 67.1' north of the northeast corner of Lot 3, Block 2, Webb Business Park.  
 Elev. = 1420.32 (NAVD88)

BM #2: Disc on Top of Curb, approximately 230.9' west and 52.2' north of the northwest corner of Lot 2, Block 2, Webb Business Park.  
 Elev. = 1405.30 (NAVD88)



City maintenance of water mains ends at right-of-way.



**DEPTH UNKNOWN**  
 Contractor to Verify Depth & Location of Existing Water Line Prior to Construction.

**BAUGHMAN COMPANY**  
 315 Ellis St.  
 Wichita, KS 67211  
 316-262-7271  
 BaughmanCo.com

WEBB BUSINESS PARK Bldg. #3

**LINE 2**

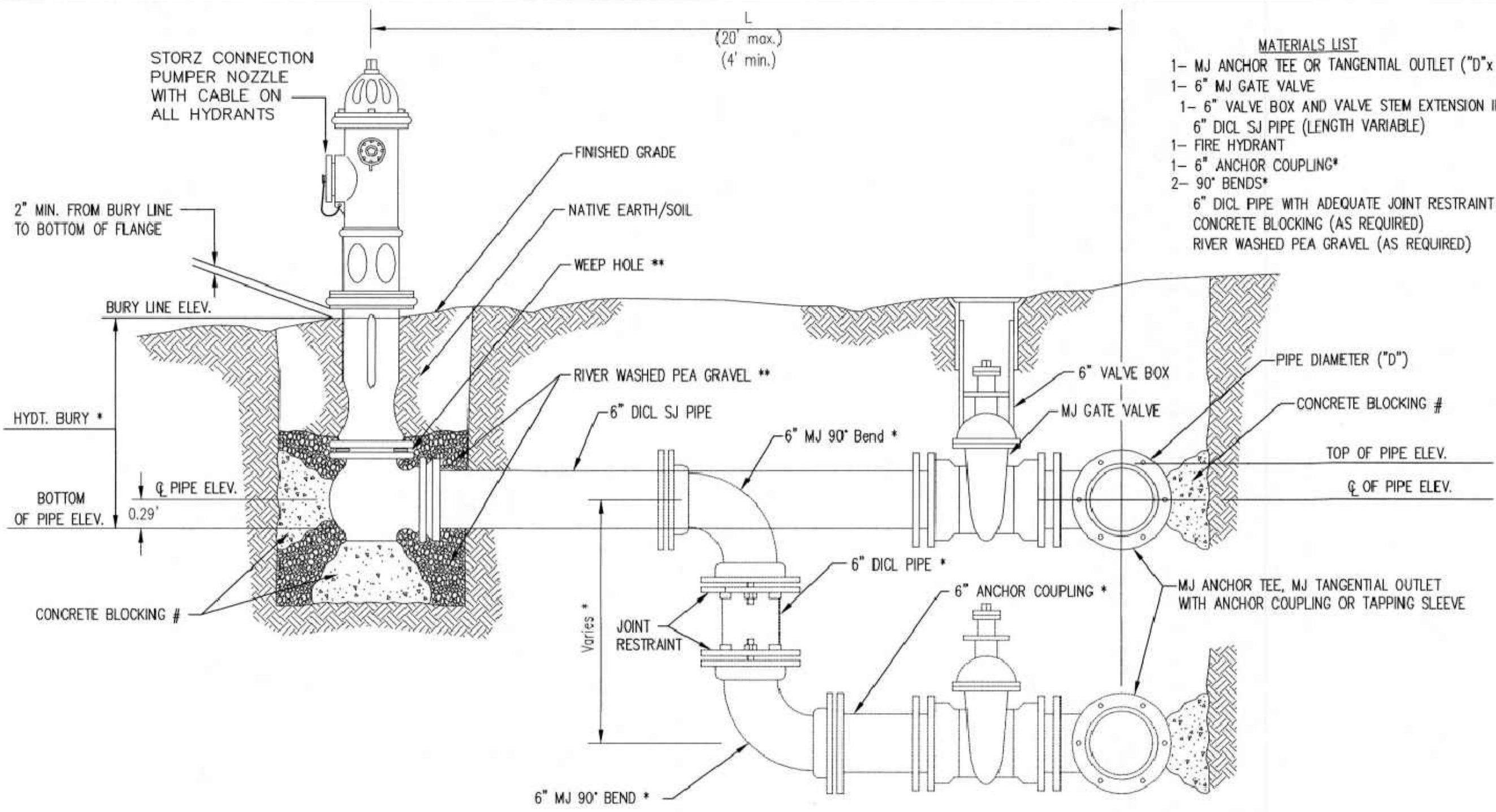
WATER DISTRIBUTION SYSTEM

PROJECT NUMBER:

DESIGN: TJW DRAWN: TMS  
 DATE: April 14, 2022

SHEET **3** OF **13**

File: E:\Projects\Webb Business Park #3 - Lot 2 & 3\Engineering\Phase 1\PPWPPW.dwg



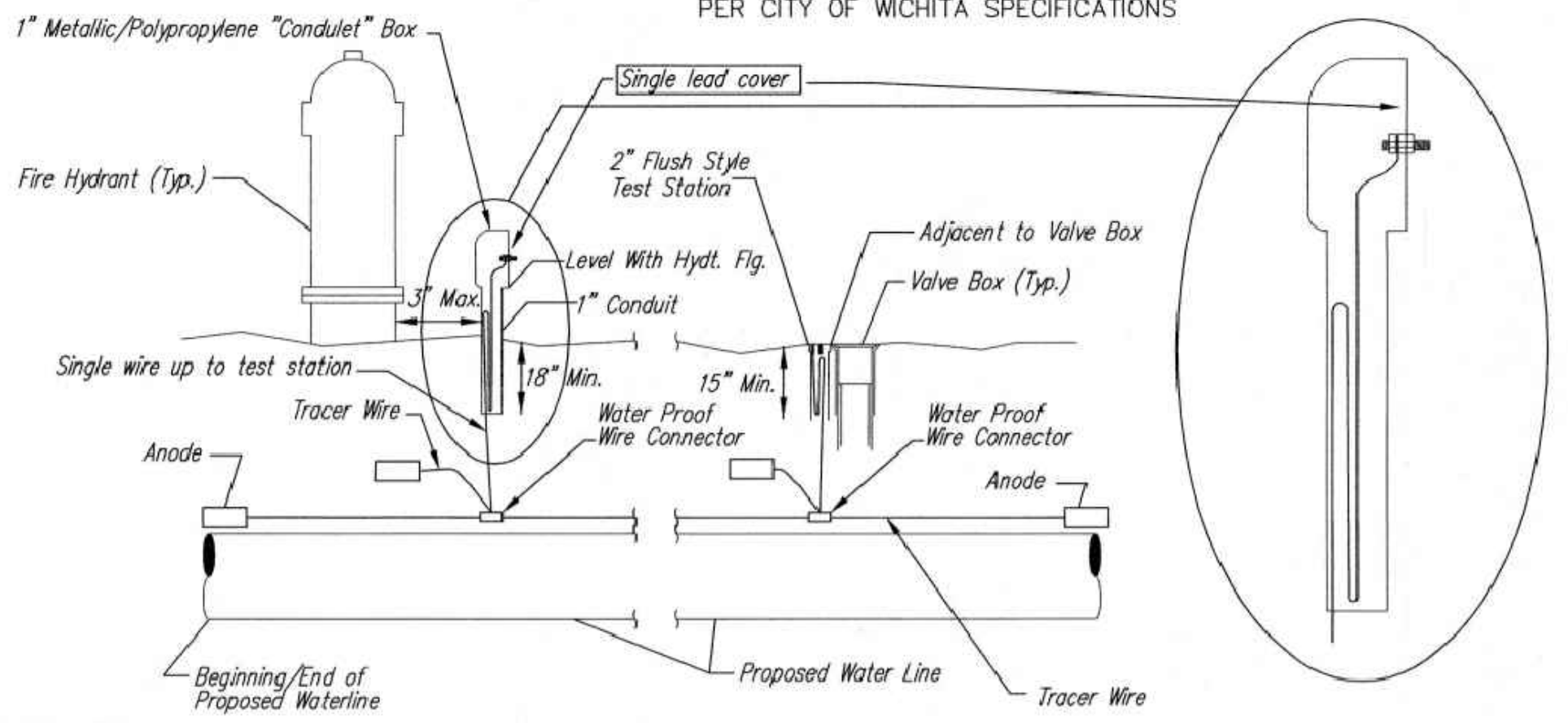
- MATERIALS LIST**
- 1- MJ ANCHOR TEE OR TANGENTIAL OUTLET ("D"x 6")
  - 1- 6" MJ GATE VALVE
  - 1- 6" VALVE BOX AND VALVE STEM EXTENSION IF REQUIRED \*
  - 6" DI CL SJ PIPE (LENGTH VARIABLE)
  - 1- FIRE HYDRANT
  - 1- 6" ANCHOR COUPLING\*
  - 2- 90° BENDS\*
  - 6" DI CL PIPE WITH ADEQUATE JOINT RESTRAINT \*
  - CONCRETE BLOCKING (AS REQUIRED)
  - RIVER WASHED PEA GRAVEL (AS REQUIRED)

\* IF THE REQUIRED HYDRANT BURY IS IN EXCESS OF 5', BUT LESS THAN 7', CONTRACTOR SHALL USE STANDARD 5' HYDRANT BURY AND HYDRANT BARREL EXTENSIONS AS NECESSARY. IF THE REQUIRED HYDRANT BURY IS GREATER THAN 7', CONTRACTOR SHALL USE 5' HYDRANT BURY, 2-MJ 90° BENDS, 6" ANCHOR COUPLING AND 6" DI CL PIPE AS NECESSARY FOR VERTICAL ADJUSTMENT. THE CONTRACTOR SHALL PROVIDE ADEQUATE THRUST BLOCKING AT HYDRANT AND MEGALUGS, OR SIMILAR RESTRAINT BETWEEN 90° BENDS TO SECURE ALL FITTINGS DURING TESTING AND OPERATION. THE CONTRACTOR SHALL PROVIDE A VALVE STEM EXTENSION PER DETAIL THIS SHEET.

\*\* CAUTION: WEEP HOLES TO BE KEPT CLEAR DURING CONSTRUCTION AND BACKFILL. CONCRETE FOR THRUST BLOCKING SHALL NOT OBSTRUCT WEEP HOLES. PLACE 1 CUBIC FOOT OF RIVER WASHED PEA GRAVEL AROUND EACH WEEP HOLE.

# CONCRETE THRUST BLOCKING SHALL BE KEPT CLEAR OF BOLTS, NUTS, AND MJ ACCESSORIES.

**FIRE HYDRANT ASSEMBLY**  
PER CITY OF WICHITA SPECIFICATIONS



**TRACER WIRE**  
Conductive type pipe locator/tracer wire shall be installed to locate all waterline pipe regardless of pipe material. The wire shall extend the entire length of the proposed pipe. The wire shall be taped to the waterline and pulled with the pipe. A waterproof connector shall be used at splice locations. A complete list of approved tracer wire and waterproof connectors can be found on the City of Wichita's website at [www.wichita.gov](http://www.wichita.gov).

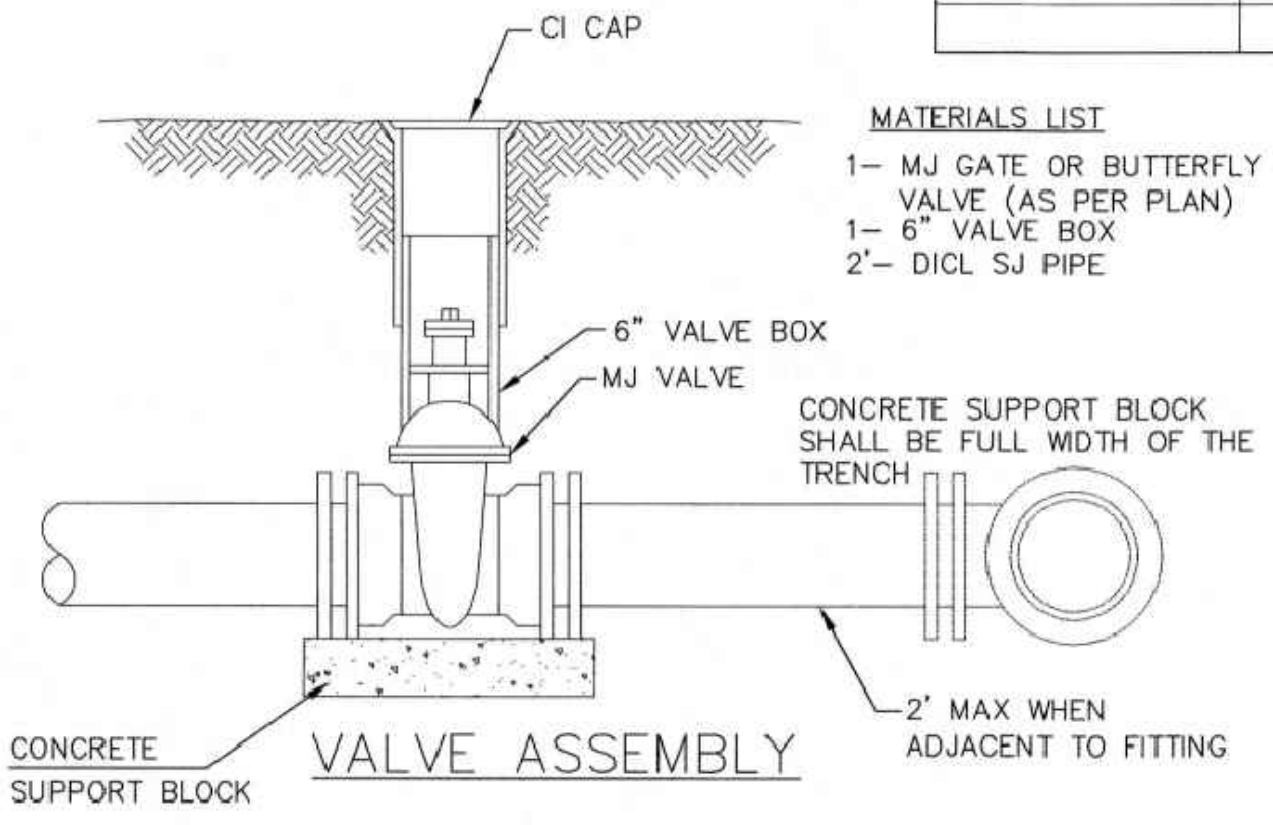
**WIRES**  
The tracer wire shall be Blue No. 12 AWG CCS with 45 mil HDPE insulation. To allow for grade adjustment, a minimum of 12" of excess wire shall be coiled at the bottom of the test station for all wires. Wire connectors shall be installed per manufacturer recommendations. Contractor shall attach wire being installed with proposed water main to any tracer wire installed with adjacent waterline projects.

**TEST STATIONS**  
The test station for fire hydrant application shall be a 1" "conduit" style station as manufactured by AGRA Industries with a removable solid cover having a single lead extending from the face or approved equal. The "conduit" style test station shall be attached to a 1" rigid galvanized conduit with a minimum length of 36" and plastic end bushing. The flush style shall have the word "WATER" stamped or molded into the lid. The test station for valve applications shall be a 2" flush style test station with wire connector on lid. Model # T2PH7B1LP Handley Industries or CD14\*TP SnakePit as manufactured by Copperhead Industries or approved equal. The flush style shall have the word "WATER" stamped or molded into the lid. All test stations shall be manufactured using molded blue tops or sufficiently coated with blue enamel paint. The tracer wire and the anode wire shall be installed to allow 12" of wire within the test station. The location of all test stations shall be recorded, and shown in the as-built drawings. Flush style test stations shall not be installed in pavement or sidewalk unless approved by the Engineer. Contractor shall extend tracer wire & move flush mount test station to nearest location out of pavement or sidewalk.

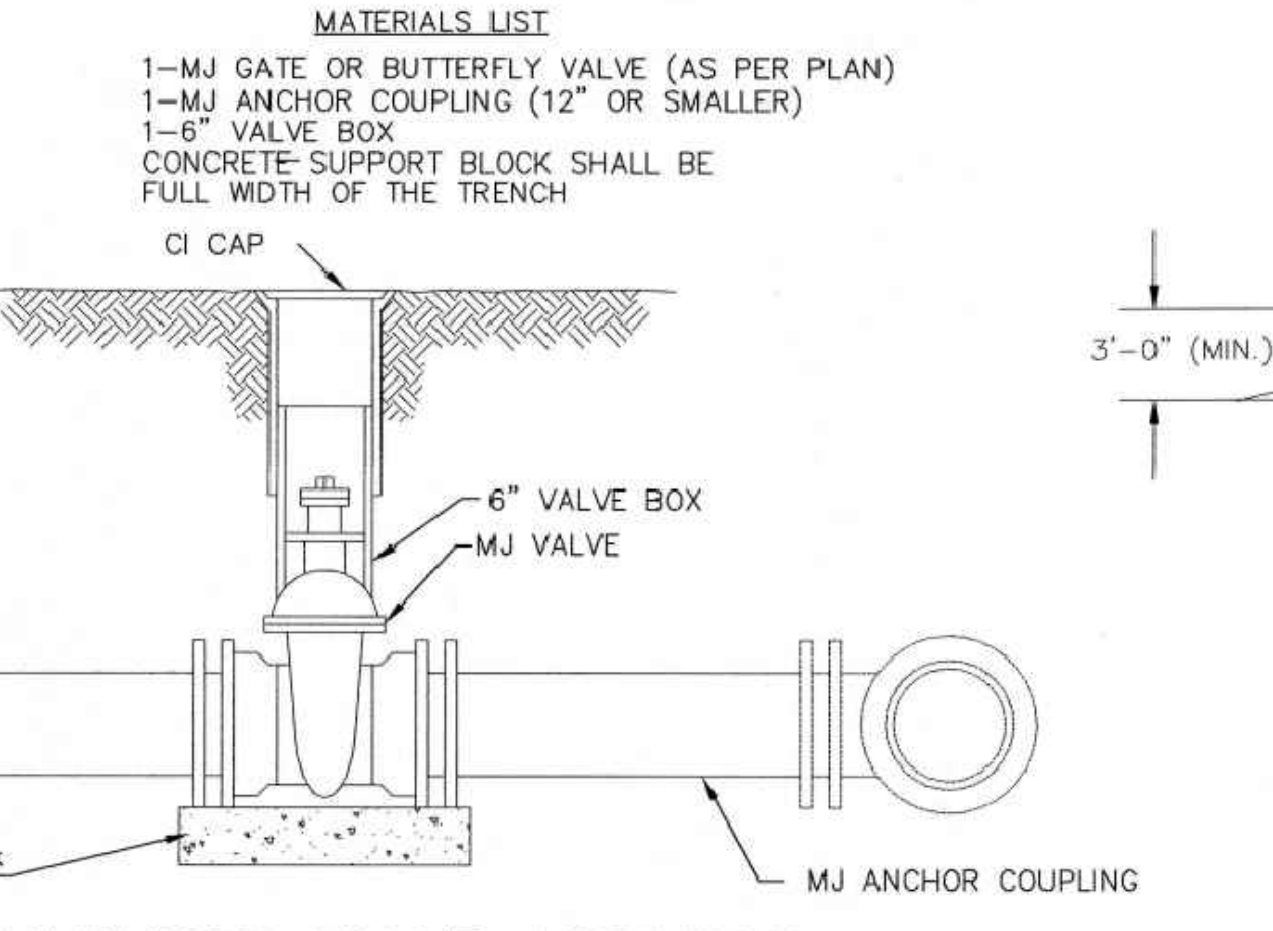
**ANODES**  
The anodes shall be 3 lb. bare zinc or magnesium. The anodes shall be buried at the same elevation as the waterline at each test station. The anodes shall be connected to 12 AWG CCS which shall be extended to the test station.

**TRACER WIRE DETAIL**  
COST IS SUBSIDIARY TO PIPE INSTALLATION

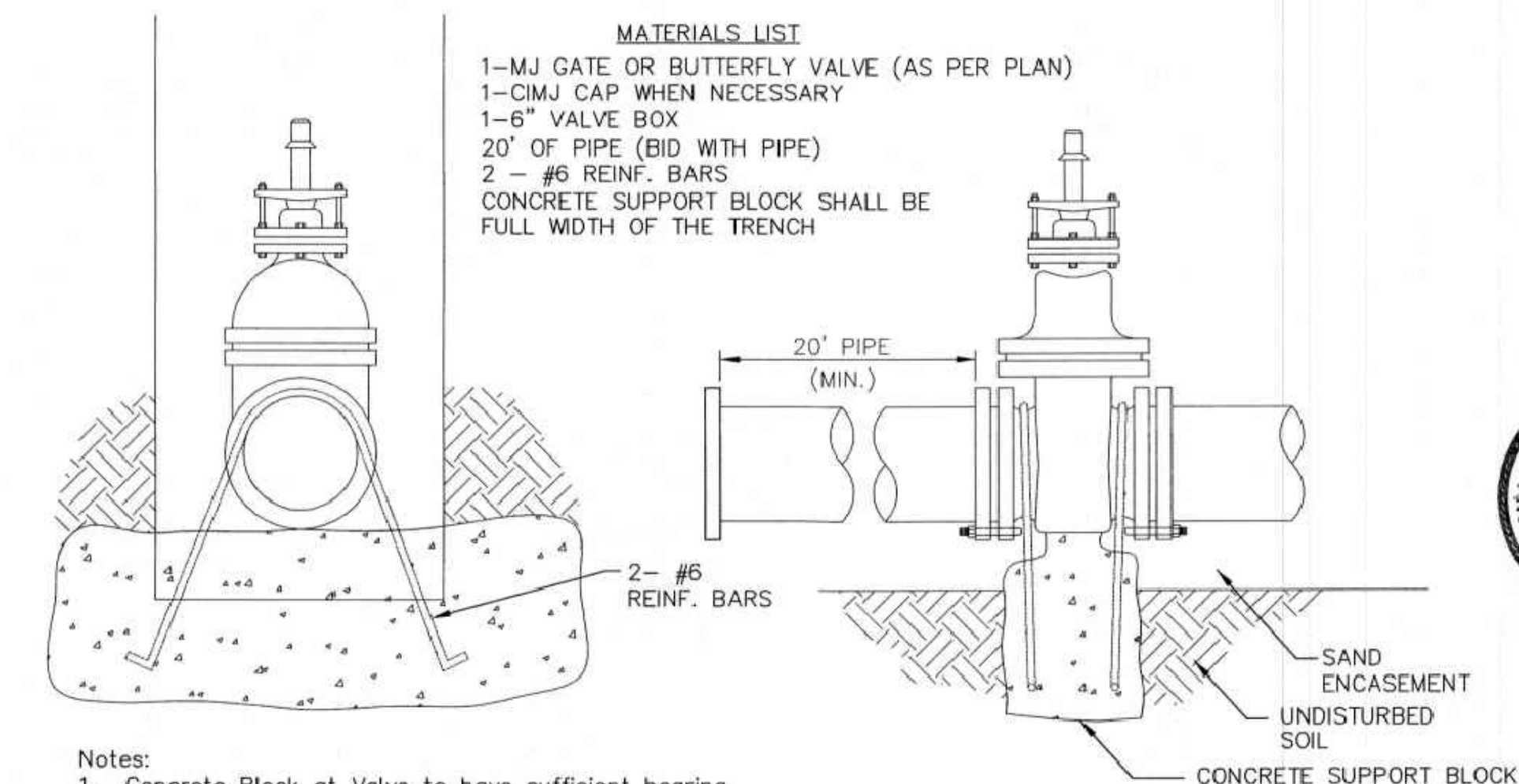
FIRE HYDRANTS REQUIRED				
STATION	BURY LINE ELEVATION	TOP OF PIPE ELEVATION	FIRE HYDRANT BURY REQUIRED*	VALVE STEM EXT. REQUIRED (ft)*
3+53.01	1416.00	1411.65	5.0'	-
3+52.68	1417.40	1413.05	5.0'	-



- MATERIALS LIST**
- 1- MJ GATE OR BUTTERFLY VALVE (AS PER PLAN)
  - 1- 6" VALVE BOX
  - 2'- DI CL SJ PIPE



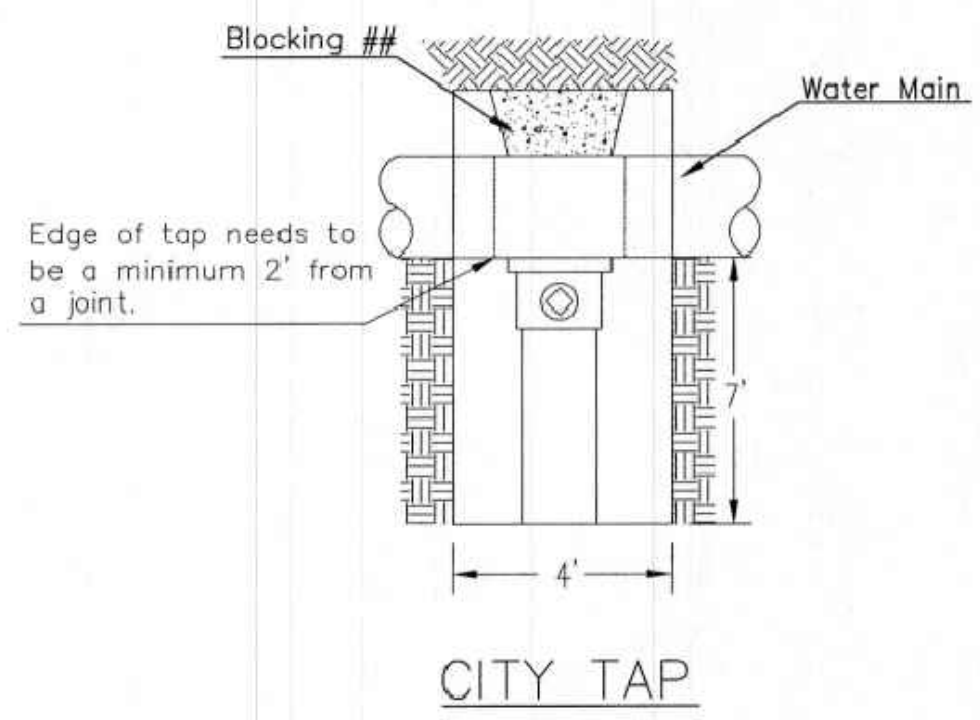
**ANCHORED VALVE ASSEMBLY**



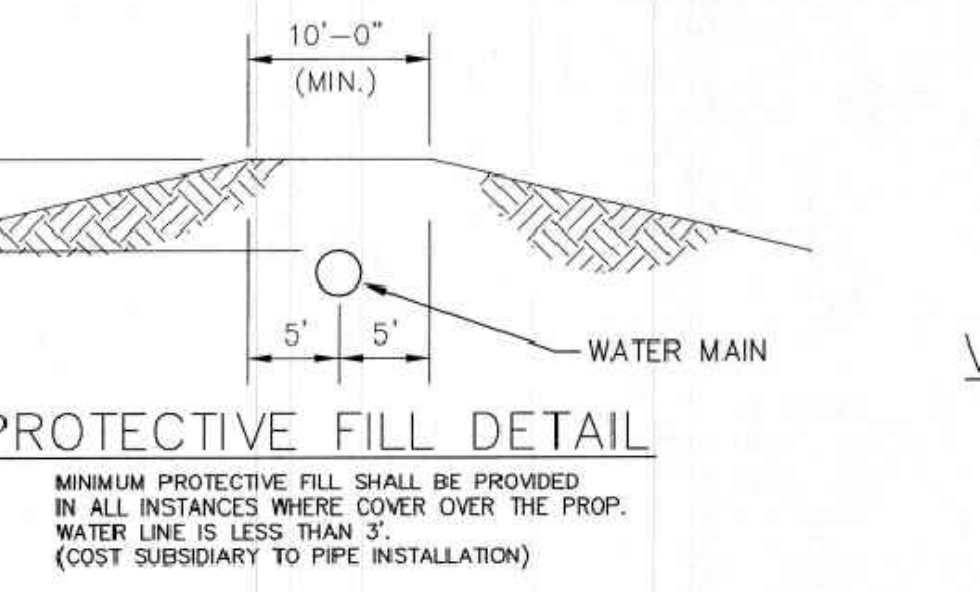
- Notes:**
- Concrete Block at Valve to have sufficient bearing in undisturbed soil to prevent thrust movement as shown in table at right. Field Engineer to determine thrust loading of undisturbed soil and final size of thrust block.
  - The thrust block shall be constructed such that bolts, nuts, and other MJ accessories are kept clear of concrete.
  - All valves at dead ends and at other locations as called out on the plans shall be blocked as shown here.

THRUST AT VALVES	
VALVE	THRUST AT 150 #/sq ft
4"	1809 lbs.
6"	4245 lbs.
8"	7540 lbs.
12"	16965 lbs.

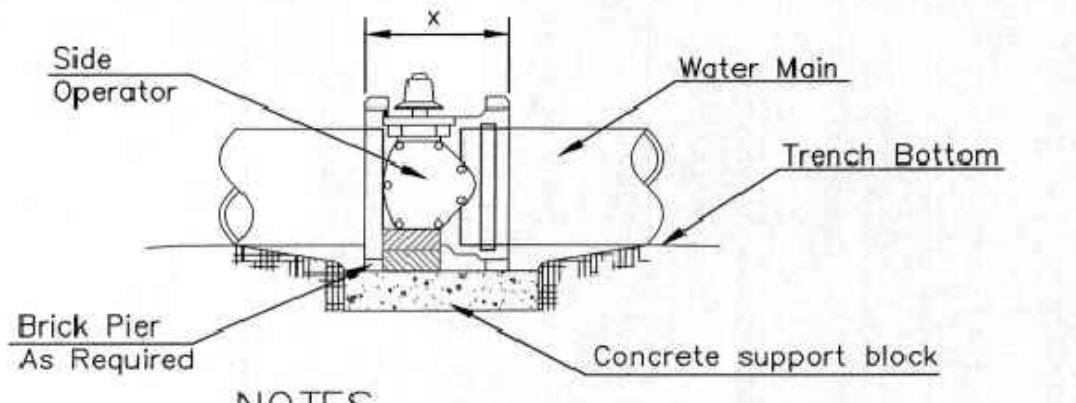
**ANCHORED VALVE ASSEMBLY, SPECIAL**



## When the City of Wichita makes tap, blocking is to be done by Contractor

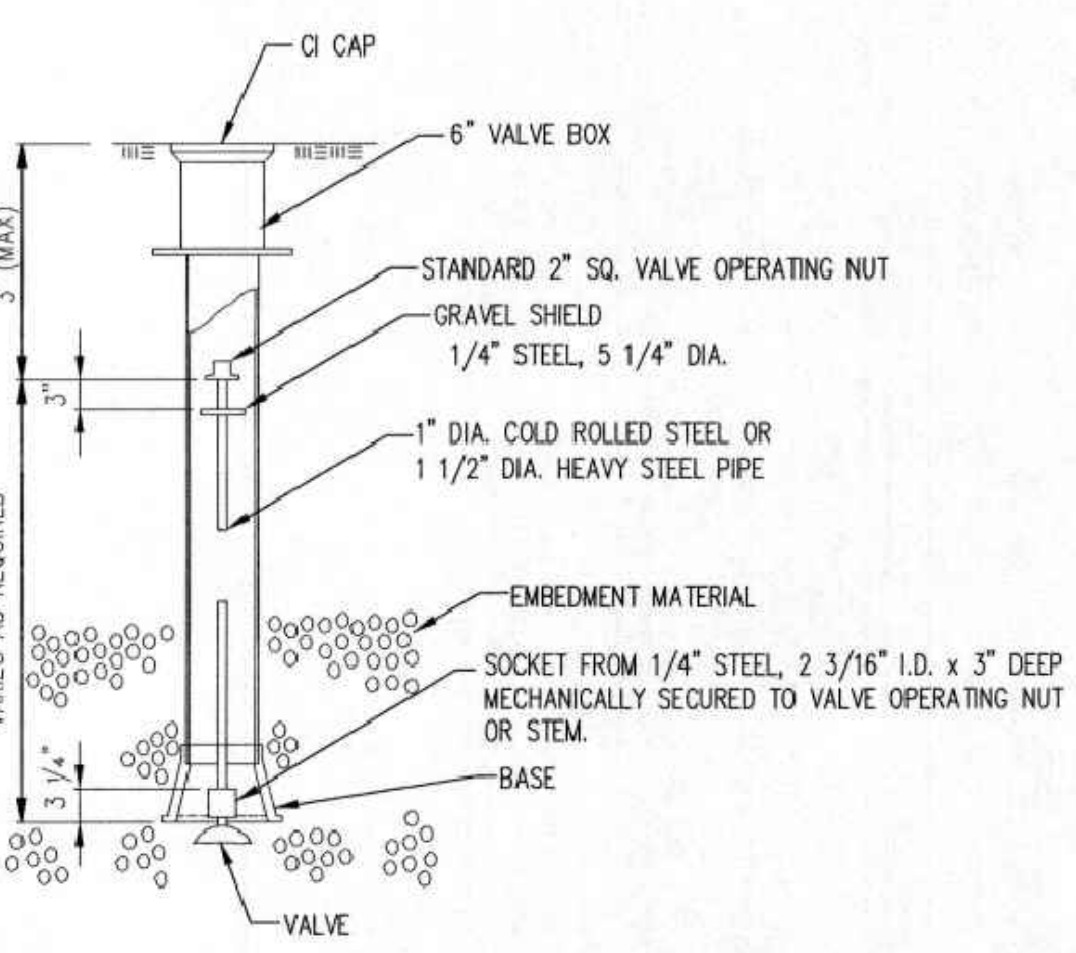


**PROTECTIVE FILL DETAIL**

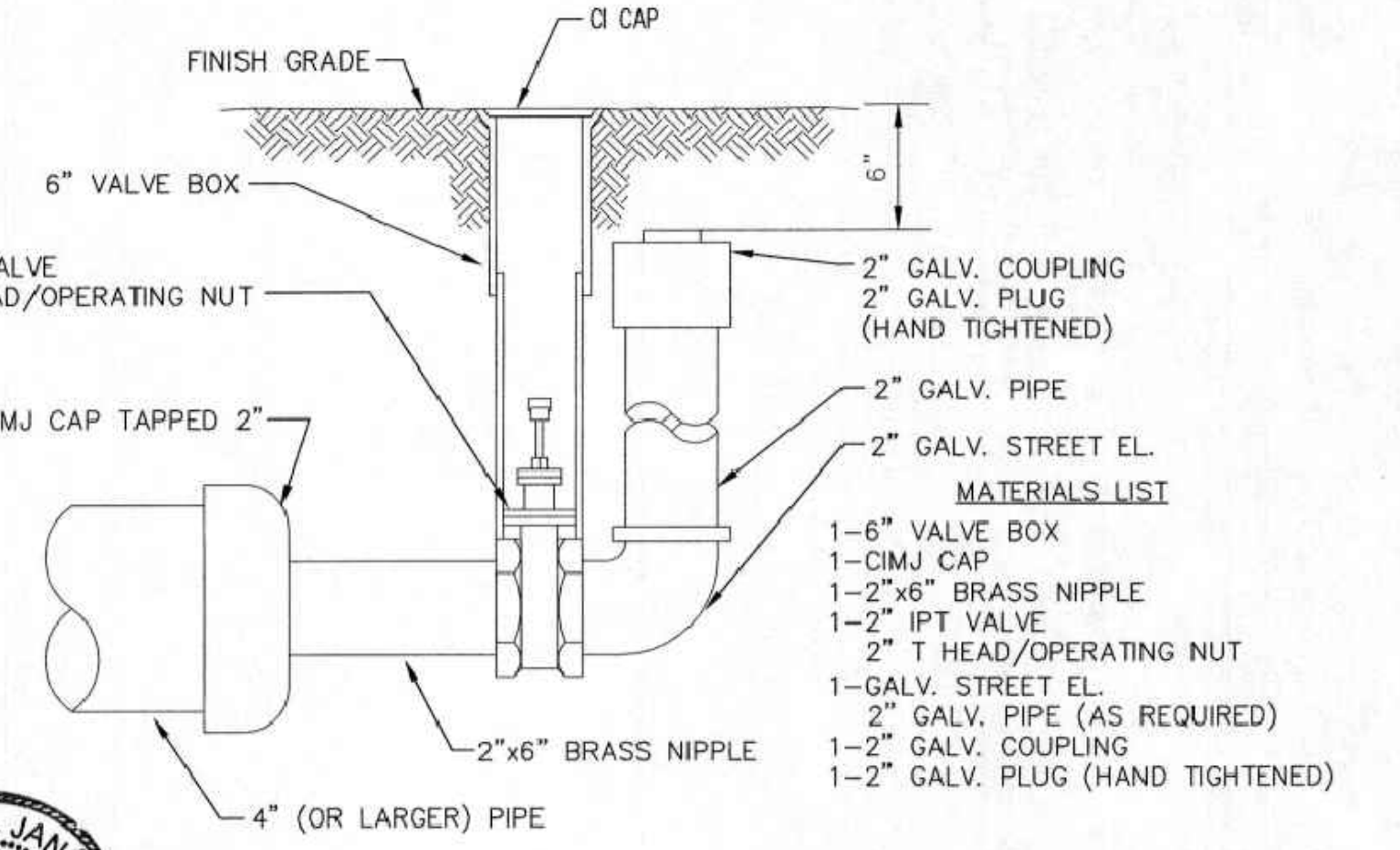


- NOTES**
- This detail covers Butterfly Valve installation, inclusive, regardless of type of pipe or joint used. 24" and larger lines to be detailed on plans.
  - 6" Valve Box and Cover required per City of Wichita Std. Specifications.
  - Conc. Support Block to be full width of trench.

**CONCRETE SUPPORT BLOCKING FOR BUTTERFLY VALVE INSTALLATION**



**VALVE STEM EXTENSION DETAIL**  
NOTE: ONE VALVE STEM EXTENSION FOR EACH VALVE BURIED GREATER THAN 5'.



**2" BLOWOFF ASSEMBLY**



**STANDARD WATER ASSEMBLY DETAIL**

CITY ENGINEER  
**GARY JANZEN, P.E.**

PROJECT NUMBER	OCA NUMBER	DATE
----------------	------------	------

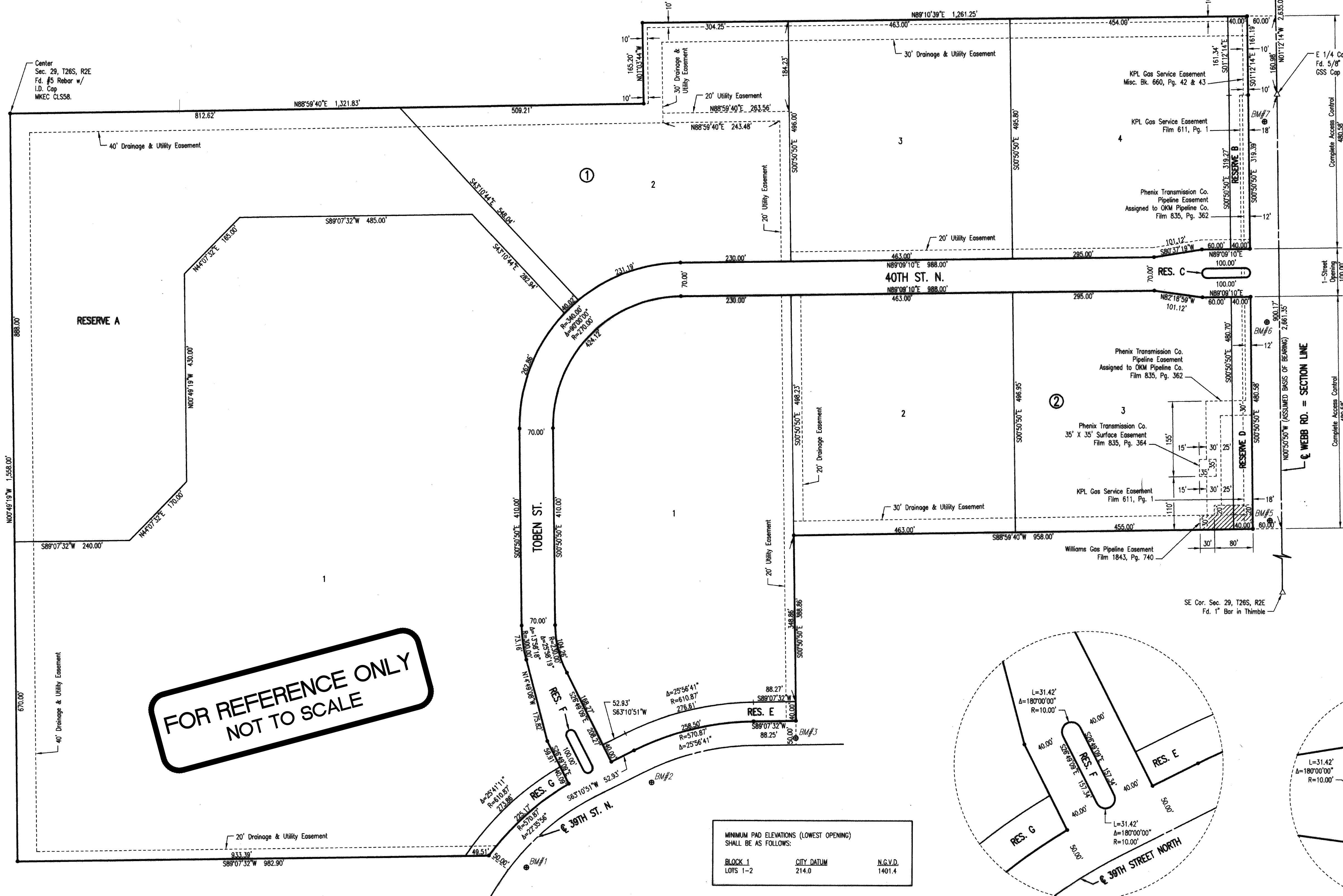
CITY ENGINEER'S OFFICE  
CITY HALL - SEVENTH FLOOR  
455 NORTH MAIN STREET  
WICHITA, KANSAS 67202-1620  
(316) 268-4501

SHEET  
**5 of 13**

REVISED: OCTOBER 2016

# WEBB BUSINESS PARK

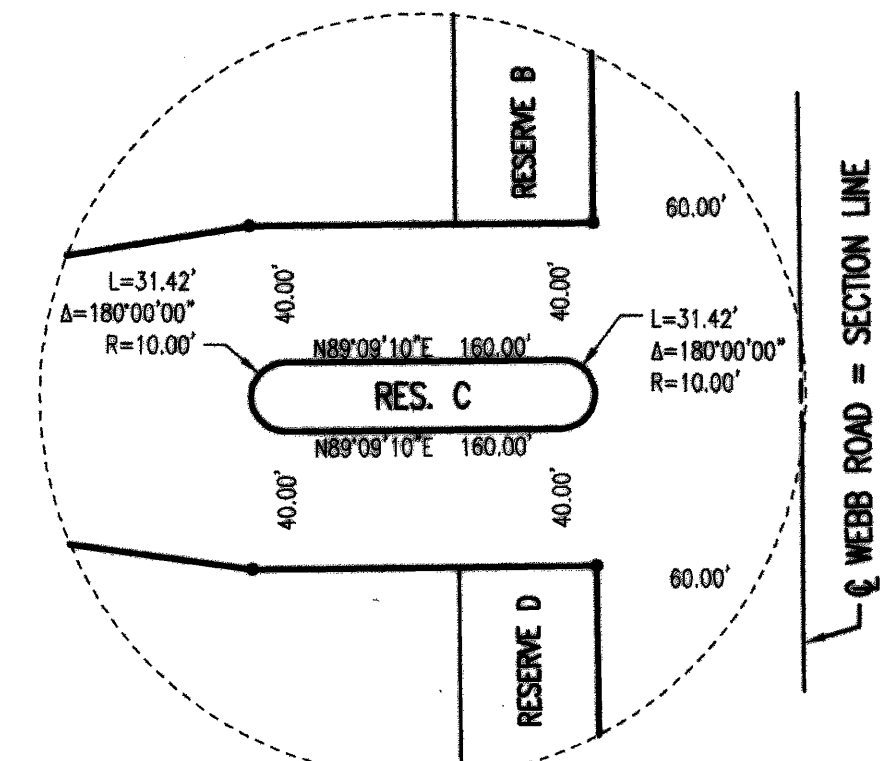
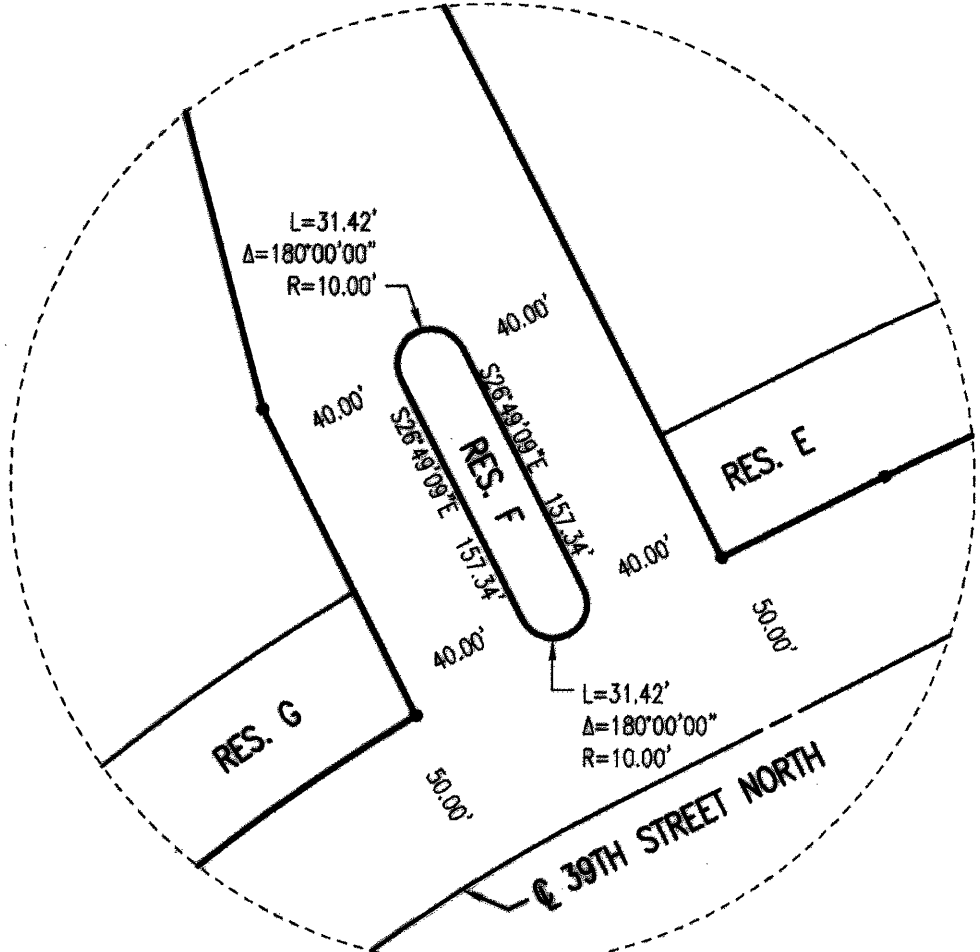
AN ADDITION TO WICHITA, SEDGWICK COUNTY, KANSAS



**FOR REFERENCE ONLY  
NOT TO SCALE**

MINIMUM PAD ELEVATIONS (LOWEST OPENING) SHALL BE AS FOLLOWS:		
BLOCK 1 LOTS 1-2	CITY DATUM 214.0	N.G.V.D. 1401.4

- = 1/2" REBAR W/PEC CAP UNLESS OTHERWISE NOTED  
 Δ = SECTION CORNER
- BENCHMARKS** BM#999
- BM#1  
 DATUM BENCH MARK FROM TOBEN FIFTH ADDITION BY MKEC ENGINEERING CONSULTANTS. A CHISELED SQUARE ON THE WEST SIDE OF THE CENTER OF THREE CURB INLETS ON THE SOUTHEAST SIDE OF 39TH STREET NEAR THE SOUTHWEST CORNER OF THE PROPOSED PLAT FOR WEBB BUSINESS PARK ADDITION.  
 ELEV. = 224.96
- BM#2  
 CHISELED SQUARE ON NORTHEAST CORNER CURB INLET ON THE SOUTHEAST SIDE OF 39TH STREET NEAR ADDRESS 38.30.  
 ELEV. = 227.65
- BM#3  
 CHISELED SQUARE ON THE NORTH TOP OF CURB ON 39TH STREET NEAR THE SOUTHWEST CORNER OF PROPOSED WEBB BUSINESS PARK ADDITION.  
 ELEV. = 232.98
- BM#4  
 CHISELED SQUARE ON THE NORTHEAST CORNER OF CURB INLET ON THE SOUTH SIDE OF 39TH STREET WEST OF WEBB ROAD.  
 ELEV. = 227.89
- BM#5  
 CHISELED SQUARE ON THE WEST TOP OF CURB OF WEBB ROAD EAST OF A FIRE HYDRANT LOCATED AT 884' SOUTH OF THE EAST QUARTER CORNER OF SECTION 29.  
 ELEV. = 227.92
- BM#6  
 CHISELED SQUARE ON WEST TOP CURB ON WEBB ROAD SOUTHWEST OF A PIPELINE MARKER AND 474' SOUTH OF THE EAST QUARTER CORNER OF SECTION 29.  
 ELEV. = 228.49
- BM#7  
 CHISELED SQUARE ON THE EAST SIDE OF A CURB INLET ON THE WEST SIDE OF WEBB ROAD LOCATED 26' WEST AND 57' SOUTH OF THE EAST QUARTER CORNER OF SECTION 29.  
 ELEV. = 230.32



SCALE: 1" = 100'



**BAUGHMAN  
COMPANY**

315 Ellis St.  
Wichita, KS 67211  
316-262-7271  
BaughmanCo.com

WEBB BUSINESS PARK  
Bldg. #3

**COPY OF  
PLAT**

WATER DISTRIBUTION  
SYSTEM

PROJECT NUMBER:

DESIGN: DRAWN:

DATE: January 28, 2022

SHEET **13** OF **13**

G:\2007\07307\Plan\07307 Final Plat 2 of 2

File: E:\Projects\Webb Business Park #3 - Lot 2 & 3\Engineering\Phase 1\PPWP\PPW.dwg