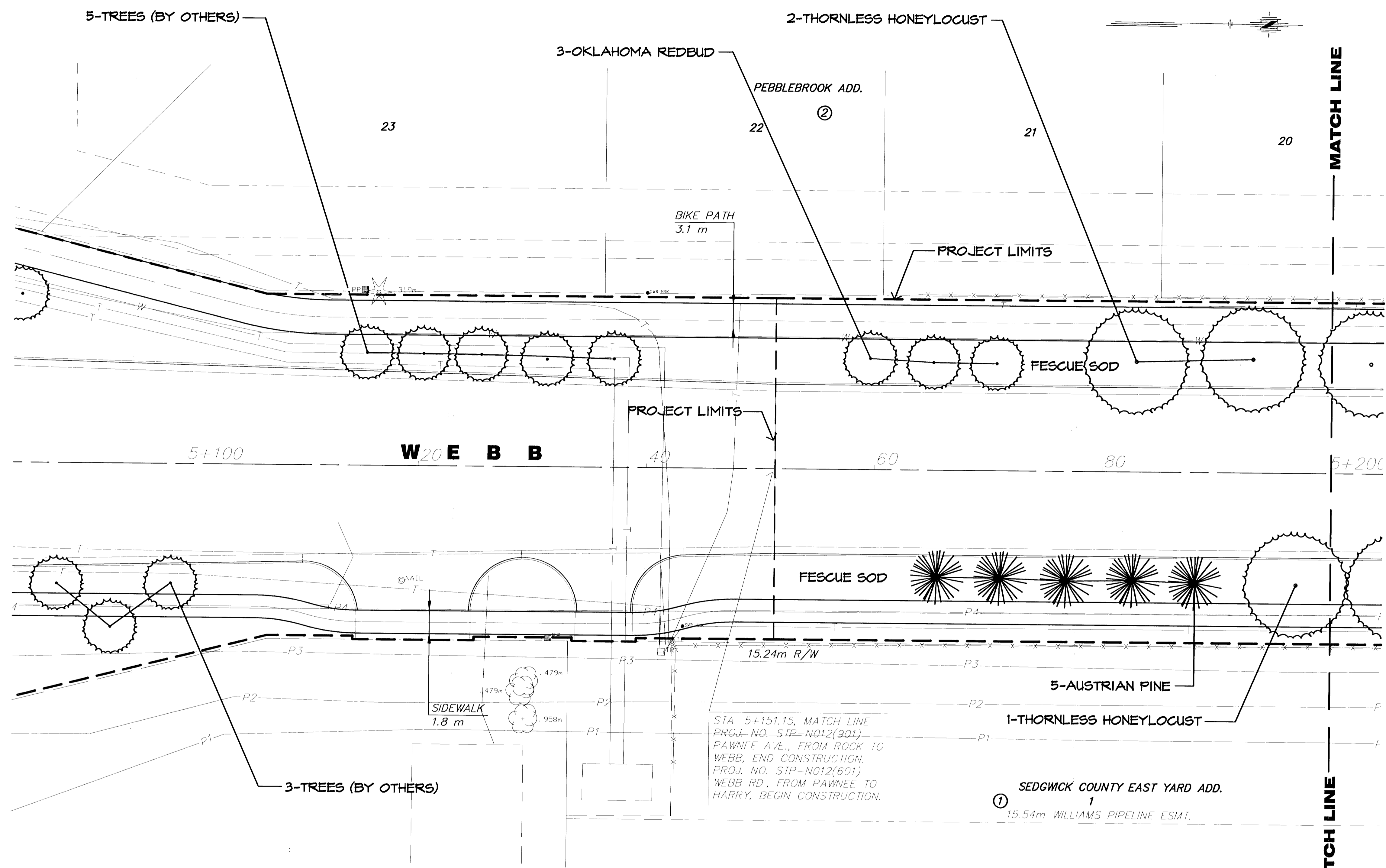
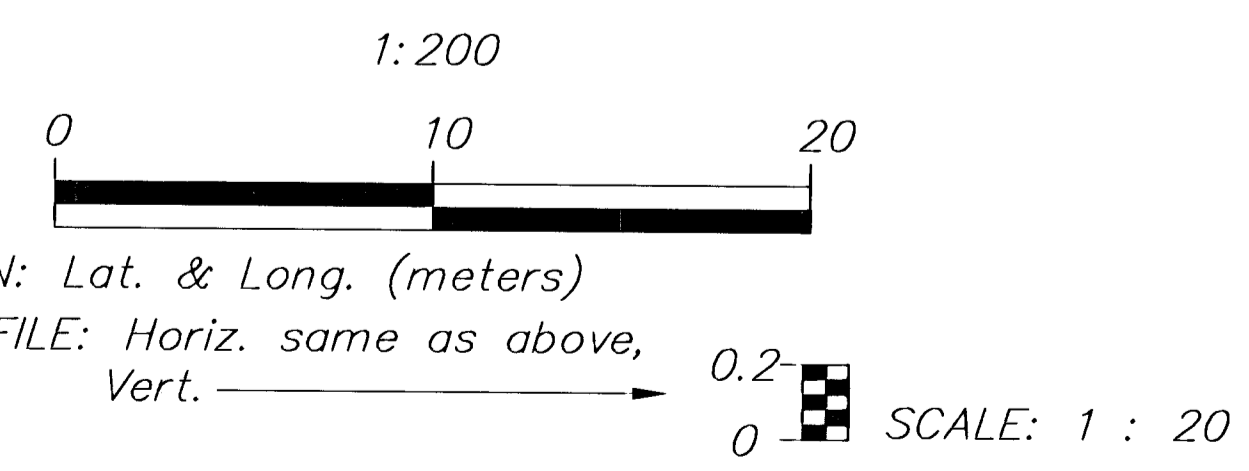


FHWA REG. NO.	STATE	PROJECT NO.	YEAR	SHEET NO.	TOTAL SHEETS
7	KANSAS	STP-N012(601)	2001	3	14



PLANT LIST FOR THIS SHEET

QTY.	COMMON NAME	BOTANICAL NAME	SIZE	CONDITION/REMARKS
LARGE DECIDUOUS TREES				
3	THORNLESS HONEYLOCUST	<i>Gleditsia triacanthos 'Shademaster'</i>	25" cal.	Balled-in-Burlap
EVERGREEN TREES				
5	AUSTRIAN PINE	<i>Pinus nigra</i>	8'	Balled-in-Burlap
ORNAMENTAL TREES				
3	OKLAHOMA REDBUD	<i>Cercia reniformis</i>	1.5" cal.	Balled-in-Burlap
LAWN				
-	K-31 FESCUE	<i>Festuca arundinacea 'K-31'</i>	80D	



STA. 5+151.15, MATCH LINE
 PROJ. NO. STP-N012(601)
 PAWNEE AVE., FROM ROCK TO
 WEBB, END CONSTRUCTION.
 PROJ. NO. STP-N012(601)
 WEBB RD., FROM PAWNEE TO
 HARRY, BEGIN CONSTRUCTION.

SEDGWICK COUNTY EAST YARD ADD.
 1
 15.54m WILLIAMS PIPELINE ESMT.

2					
1					
NO.	DATE	REVISIONS	BY	APP'D	
KANSAS DEPARTMENT OF TRANSPORTATION LANDSCAPE IMPROVEMENTS WEBB ROAD STA. 5+100 TO STA. 5+200 PROJ. NO. 87 STP-N-0126-01 MKEC ENGINEERING CONSULTANTS, INC. WICHITA, KANSAS					
DESIGNED BY:	JTC	CHECKED BY:	JTC		
DRAWN BY:	GJR	DATE:	APRIL 2002	SHEET	3 OF 14

G:\CIVIL\PAV-WEBB\98772\ROADSIDE\LANDSCAPE\LAND.DWG Thu Apr 11 16:23:02 2002