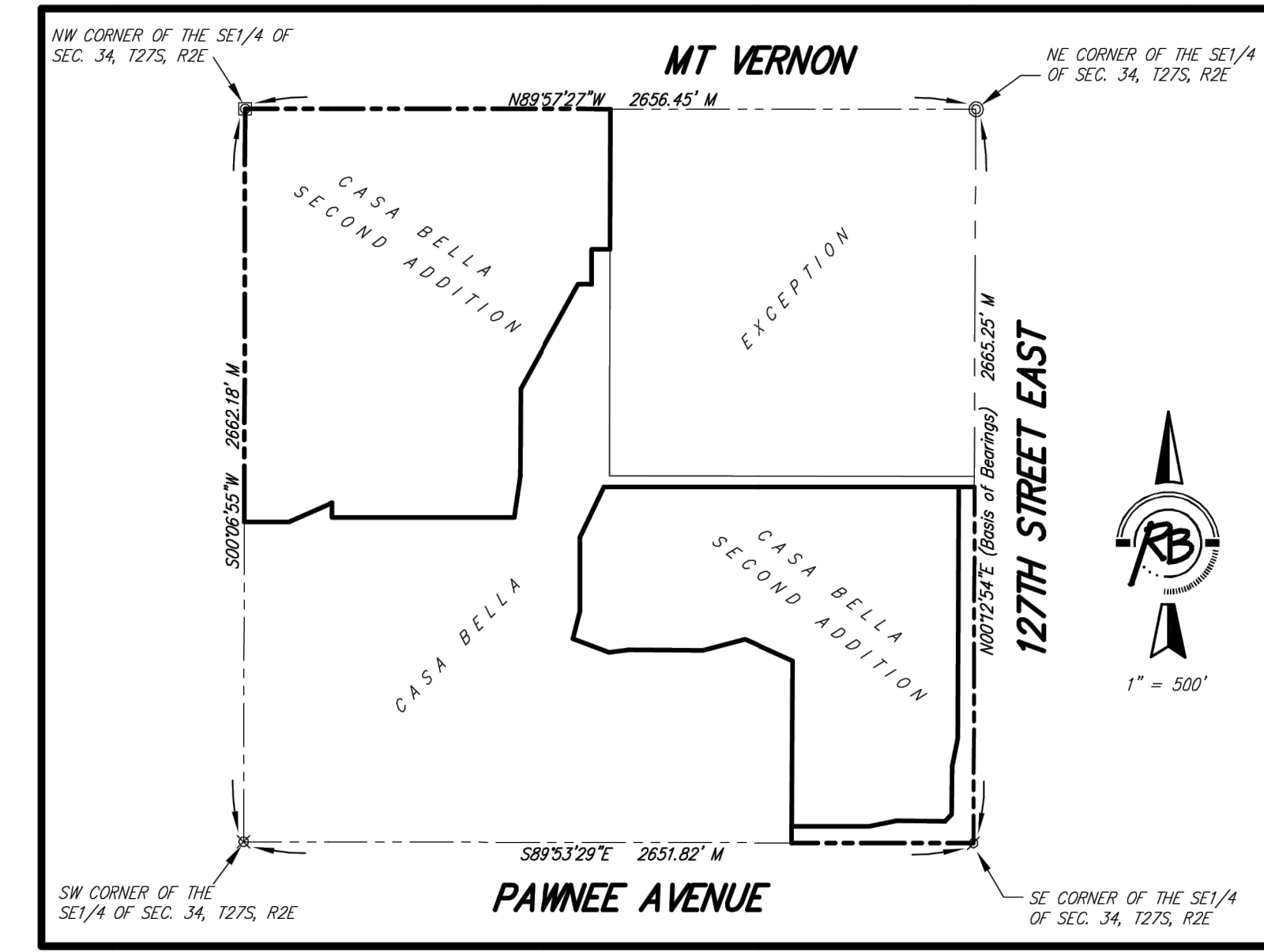


CASA BELLA SECOND ADDITION

Wichita, Sedgwick County, Kansas



1" = 100'
 BENCH MARK: SRB BRASS DISC 55.45' E. & 5.13' S. OF THE N.W. COR., SW 1/4, SEC. 35, T27S, R2E
 ELEVATION = 1348.35 (NGVD29)

- P = Platted (Casa Bella)
 M = Measured
- SURVEY MARKER LEGEND**
- ⊠ PK MAIL IN CONCRETE (FOUND - ORIGIN UNKNOWN)
 - 1/2" IRON PIPE (FOUND - ORIGIN UNKNOWN)
 - ⊙ 3/4" IRON PIPE (FOUND - ORIGIN UNKNOWN)
 - ⊗ 5/8" REBAR W/GARBER CAP (FOUND)
 - ⊗ 1" BAR (FOUND - ORIGIN UNKNOWN)
 - ⊗ 5/8" REBAR W/SRB CAP (FOUND)
 - ⊗ 5/8" REBAR W/R&B CAP (FOUND)
 - 5/8" REBAR W/R&B CAP (SET)

BLOCK	LOT NO.	ELEVATION (NGVD29)
2	1, 2, 3, 4, 5, 6, 7	1345.4
3	10, 11, 12	1345.4
3	1, 2, 3, 4, 5, 6, 7, 8, 9	1339.4
6	1, 2, 3, 4, 5	1336.8

FOR INFORMATION ONLY



Ruggles & Bohm, P.A.
 Engineering, Surveying, Land Planning
 924 North Main (316) 264-8008
 Wichita, Kansas 67203 (316) 264-4621 fax
 www.rbkansas.com E-mail: info@rbkansas.com

DWG FILE: SURVEY BASE
 PROJECT NO. 3253P
 JULY 24, 2008