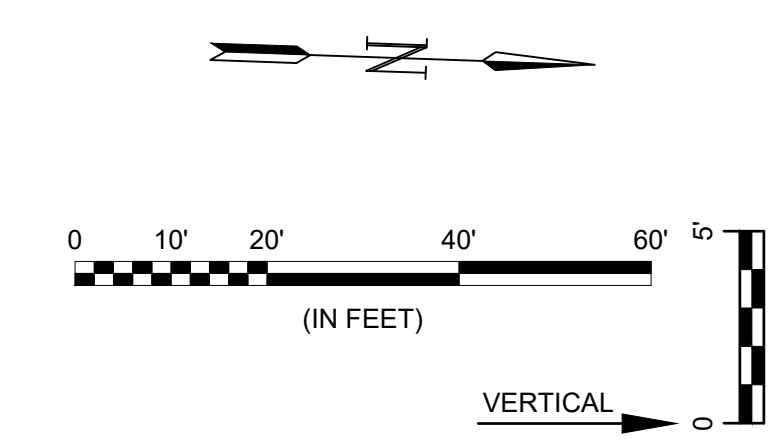
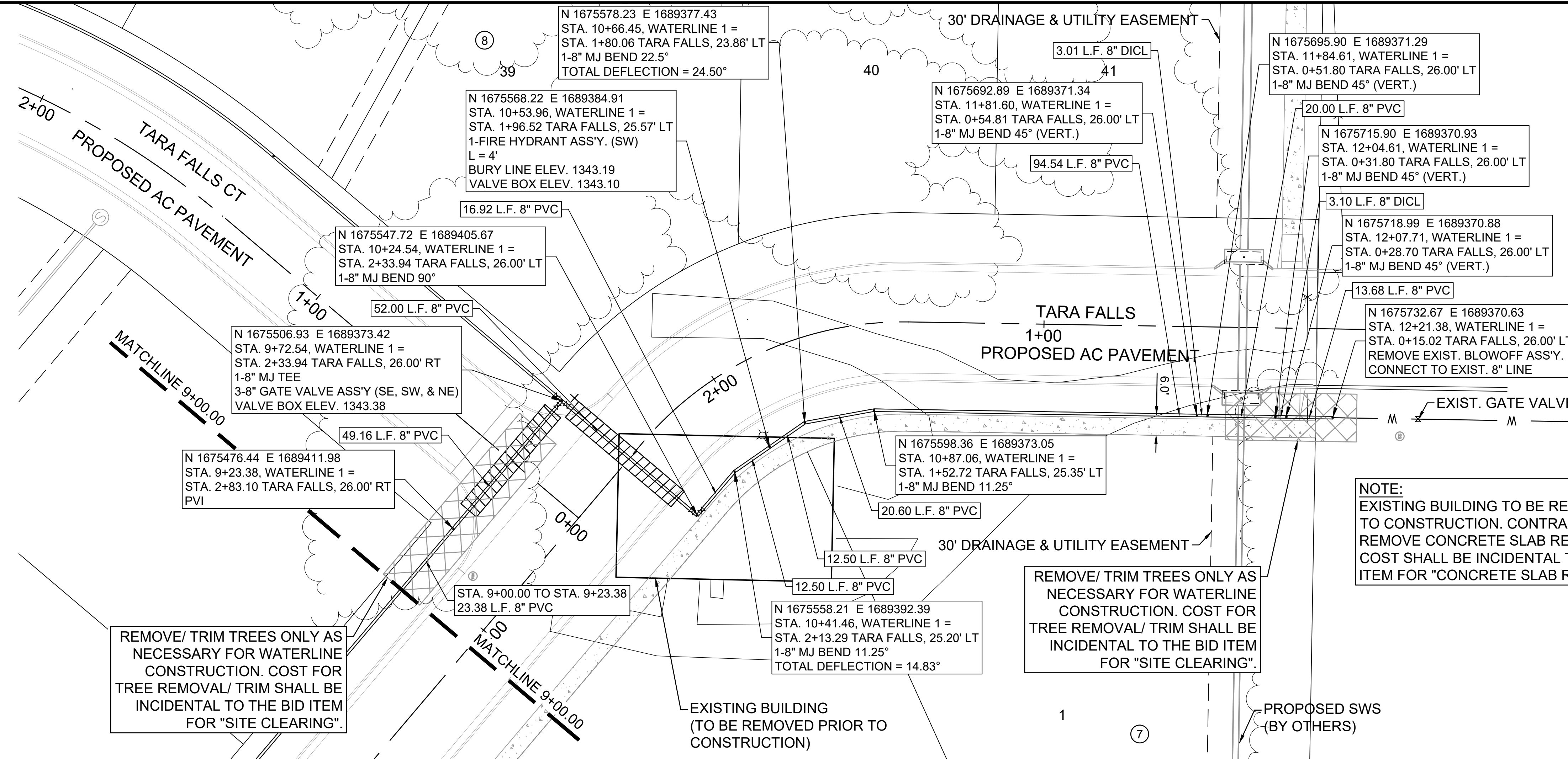


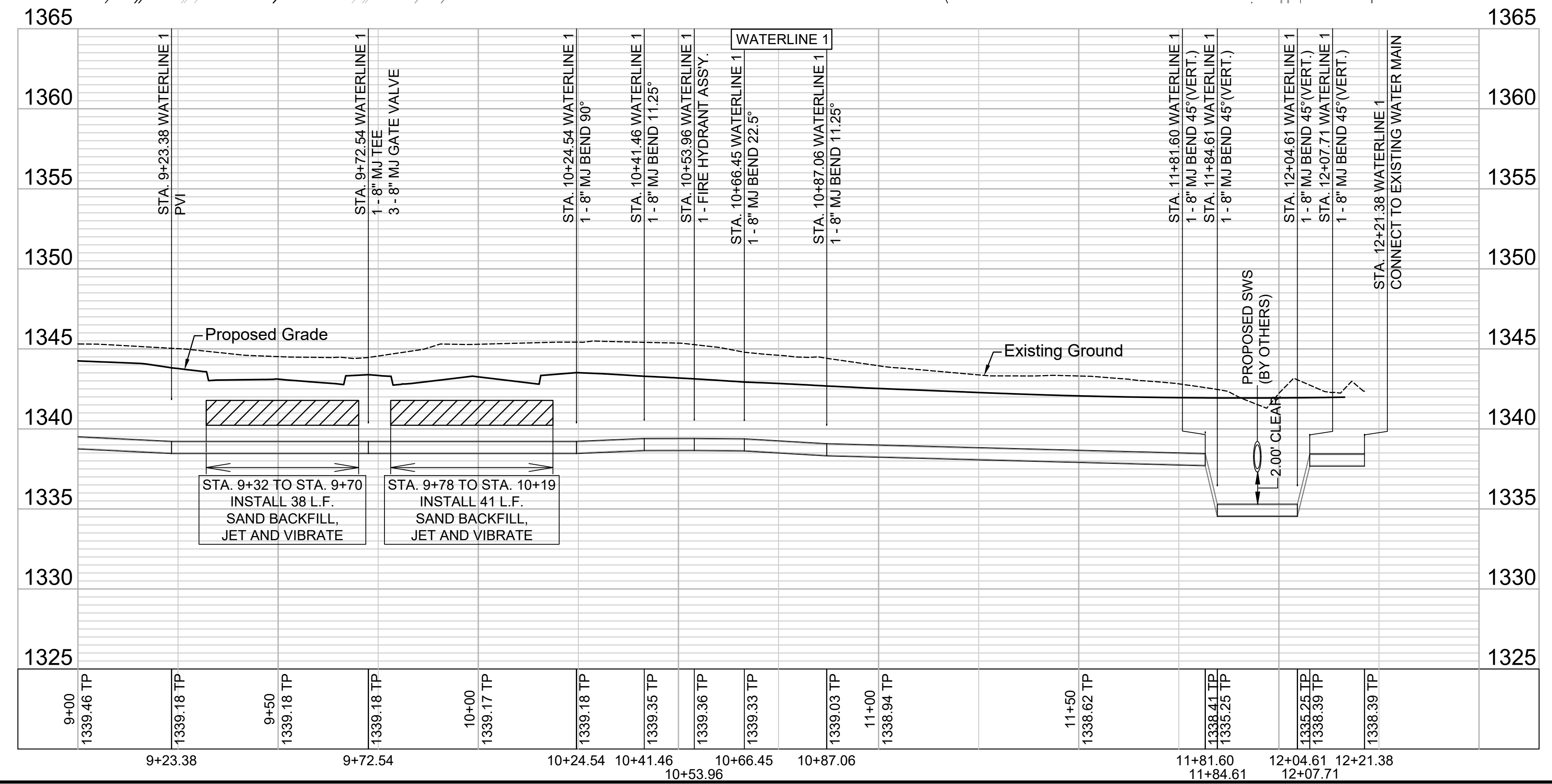
File: L:\2022\22141001 - Casa Bella Addition Ph. 8 Eng\Drawings\C3D\WDS\WATERLINE 1 (3 OF 3).dwg Last Save: 7/27/2023 2:43 PM Last saved by: MCarneraPiedra
 Last plotted by: Carnera-Piedra, Mariela Plot Date: 8/2/2023 10:29 AM Plotter used: None



REMOVE/ TRIM TREES ONLY AS NECESSARY FOR WATERLINE CONSTRUCTION. COST FOR TREE REMOVAL/ TRIM SHALL BE INCIDENTAL TO THE BID ITEM FOR "SITE CLEARING".

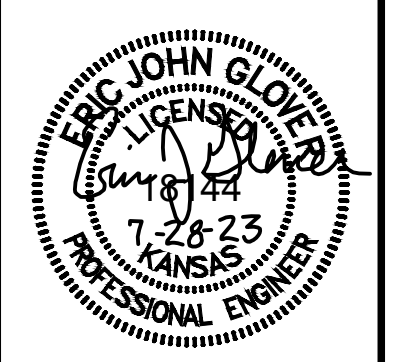
REMOVE/ TRIM TREES ONLY AS NECESSARY FOR WATERLINE CONSTRUCTION. COST FOR TREE REMOVAL/ TRIM SHALL BE INCIDENTAL TO THE BID ITEM FOR "SITE CLEARING".

NOTE:
 EXISTING BUILDING TO BE REMOVED PRIOR TO CONSTRUCTION. CONTRACTOR SHALL REMOVE CONCRETE SLAB REMAINING. COST SHALL BE INCIDENTAL TO THE BID ITEM FOR "CONCRETE SLAB REMOVAL".



© 2023 GARVER, LLC
 THIS DOCUMENT, ALONG WITH THE IDEAS AND DESIGNS CONVEYED HEREIN, SHALL BE CONSIDERED INSTRUMENTS OF PROFESSIONAL SERVICE AND ARE PROPERTY OF GARVER, LLC. ANY USE, REPRODUCTION, OR DISTRIBUTION OF THIS DOCUMENT, ALONG WITH THE IDEAS AND DESIGN CONTAINED HEREIN, IS PROHIBITED UNLESS AUTHORIZED IN WRITING BY GARVER, LLC OR EXPLICITLY ALLOWED IN THE GOVERNING PROFESSIONAL SERVICES AGREEMENT FOR THIS WORK.

1995 Midfield Road
 Wichita, KS 67209
 (316) 264-8008



REV.	DATE	DESCRIPTION	BY



CITY OF WICHITA
 WICHITA, KANSAS
 CASA BELLA SECOND
 ADDITION PHASE 8
 WATERLINE

WATERLINE 1
 (3 OF 3)

JOB NO.: 22T41001
 DATE: JULY 2023
 DESIGNED BY: .
 DRAWN BY: .

BAR IS ONE INCH ON ORIGINAL DRAWING
 IF NOT ONE INCH ON THIS SHEET, ADJUST SCALES ACCORDINGLY.

DRAWING NUMBER

SHEET NUMBER **7** OF **18**