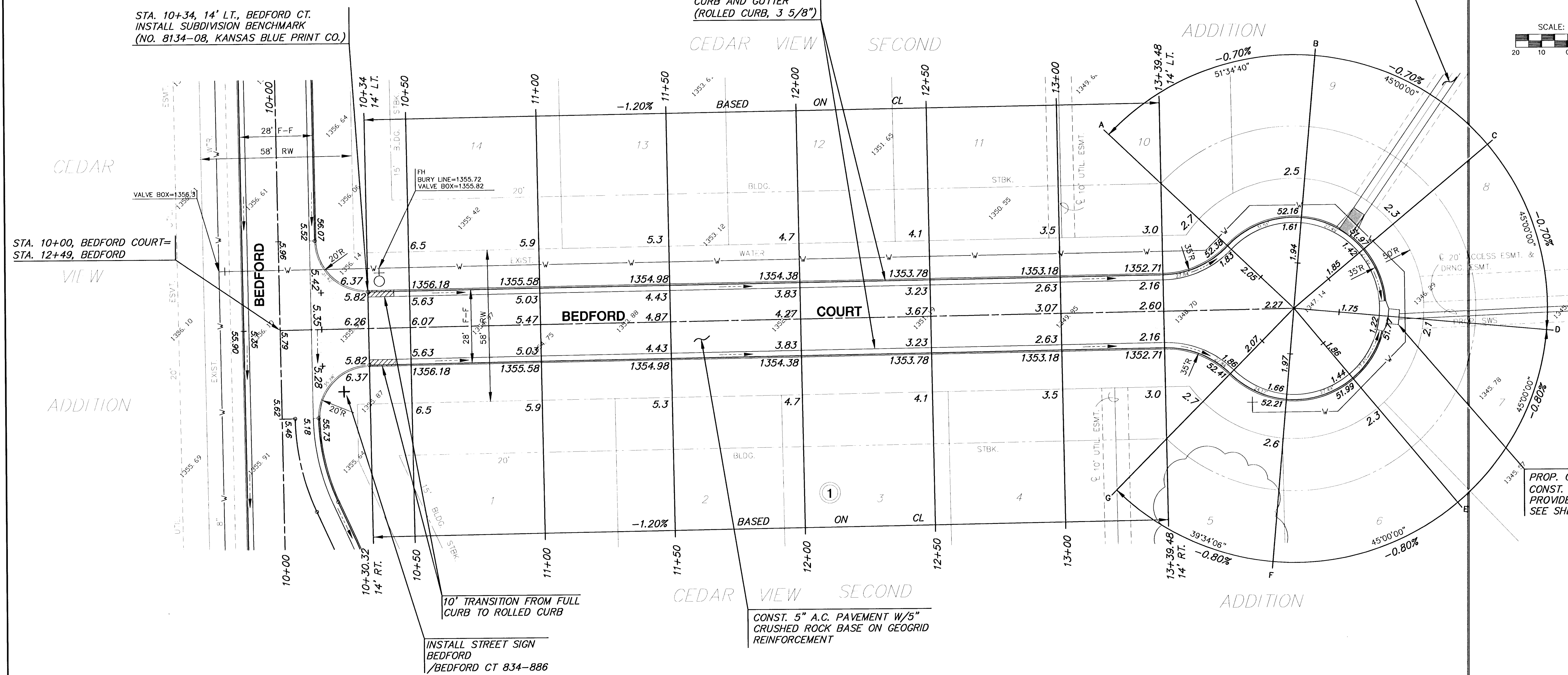
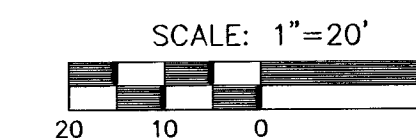


STA. 10+34, 14' LT., BEDFORD CT.
INSTALL SUBDIVISION BENCHMARK
(NO. 8134-08, KANSAS BLUE PRINT CO.)

CONSTRUCT COMBINED
CURB AND GUTTER
(ROLLED CURB, 3 5/8")

PROP. 5' SIDEWALK
W/WHEELCHAIR RAMP
SEE SHEET 4 & 16



PROP. CURB INLET TOP=1351.77
CONST. INLET HOOKUP W/PVMT.
PROVIDE SEDIMENT BARRIER
SEE SHEET 12 & 17

NOTE:
TOP OF CURB ELEVATIONS SHOWN ARE
FOR FULL CURB. CONSTRUCT COMBINED
CURB & GUTTER, ROLLED (3 5/8").

LEGEND
+ STREET SIGN & SIGN LOCATION
(SEE SIGN ASSEMBLY TABLE
FOR TYPE & STATION OF SIGN)

PAVEMENT REMOVAL

SUBDIVISION BENCH MARKS				
NO.	STREET AND STATION	FROM CL	DESCRIPTION	ELEVATIONS
1	BEDFORD CIR. STA., 19+40.80	14' RT	Top of Curb at end of SW return on Bedford Cir. Lot 24	
2	BEDFORD CT. STA., 10+34	14' LT	Top of Curb at end of return on the NE Corner of Bedford & Bedford Ct., 1st Bedford Ct. North of Lincoln. Lot 14	
3	BEDFORD CT. STA., 10+34	14' LT	Top of Curb at end of return on the NE Corner of Bedford & Bedford Ct., 2nd Bedford Ct. North of Lincoln. Lot 22	

NOTE: CONTRACTOR SHALL INSTALL SUBDIVISION BENCH MARKS ("FLAT SURVEY MARKERS NO. 8134-08 3" TOP DIAMETER" PROVIDED BY KANSAS BLUE PRINT CO., INC.) COSTS TO BE CONSIDERED SUBSIDIARY TO CONSTRUCTION OF COMBINED CURB AND GUTTER.

MKEC
ENGINEERING CONSULTANTS
411 N. WEBB ROAD
WICHITA, KS. 67206
316-684-9600

CEDAR VIEW SECOND ADDITION
PROJECT NAME

PAVING PLAN
SHEET TITLE

DFL DESIGN BY: GR DRAWN BY: GJA CHECKED BY:
FEBRUARY 2001 DATE: 00226E3 DRAWING NAME: 8 / 25 SHEET / OF