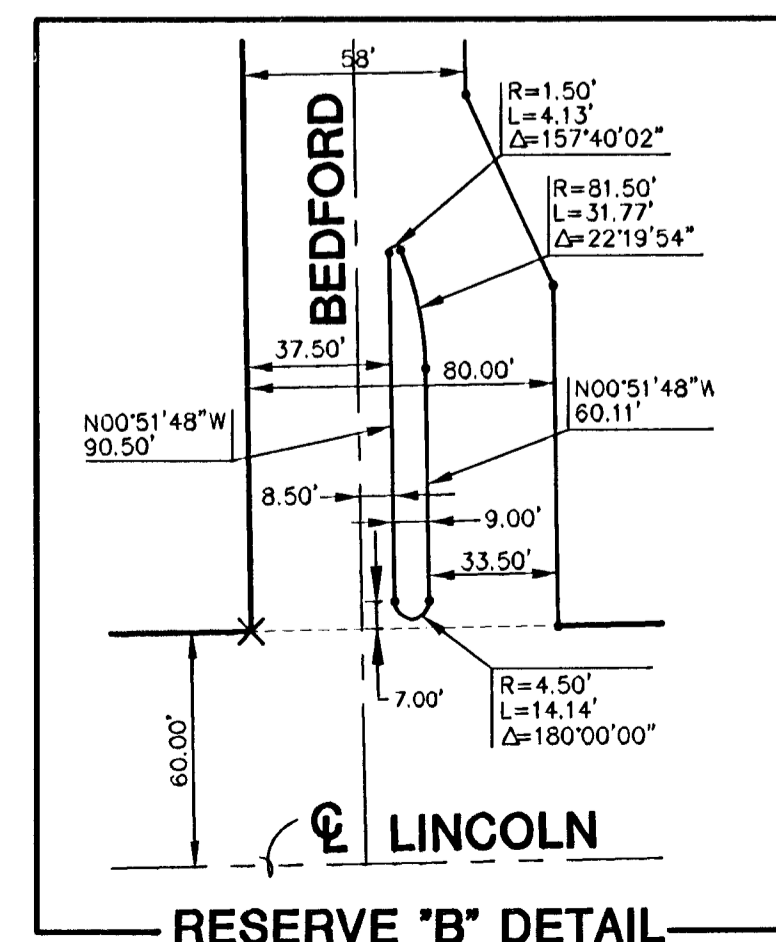
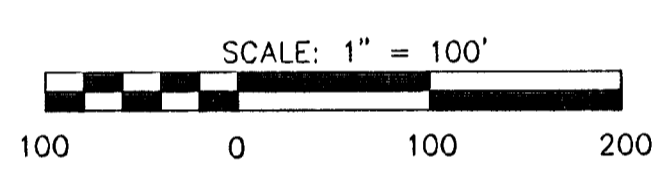
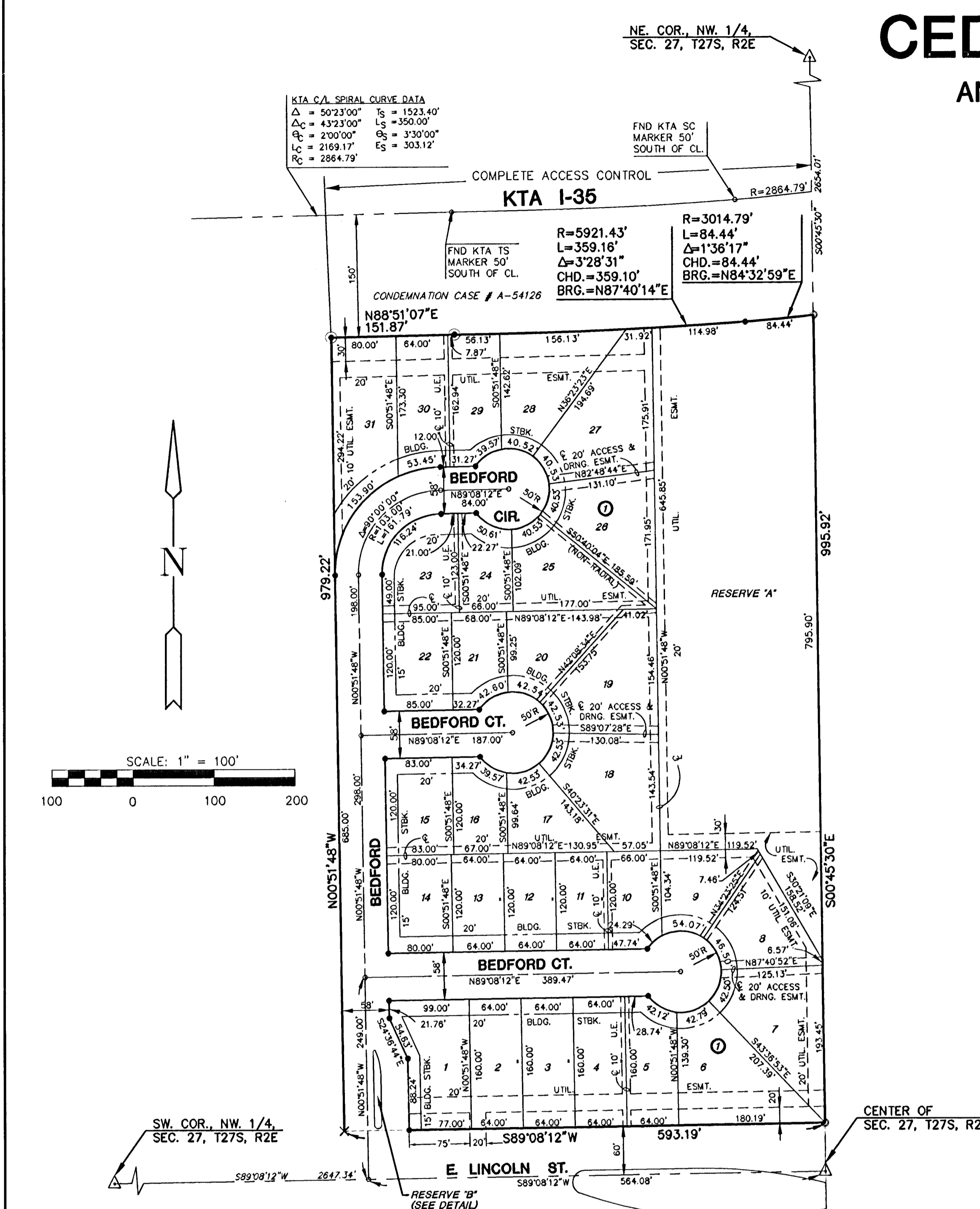


FINAL PLAT

CEDAR VIEW SECOND ADDITION

AN ADDITION TO WICHITA, SEDGWICK COUNTY, KANSAS



MINIMUM PAD ELEVATIONS (LOWEST OPENINGS)			
LOT	BLOCK	ELEVATION (CITY DATUM)	ELEVATION (USGS)
7	1	161.6	1349.0
8	1	161.6	1349.0
9	1	161.6	1349.0
18	1	162.6	1350.0
19	1	162.6	1350.0
26	1	162.6	1350.0
27	1	162.6	1350.0

- LEGEND**
- X = "X" CUT IN CONCRETE FOUND
 - ⊙ = 5/8" BAR/MKEC #755 FOUND
 - = 5/8" REBAR/MKEC CLS #39 FOUND
 - = 5/8" REBAR/MKEC CLS #39 SET
 - B.S. = BUILDING SETBACK
 - U.E. = UTILITY EASEMENT

I, Gregory J. Allison, a Registered Land Surveyor in the State of Kansas, do hereby certify that I have been in responsible charge of surveying and platting of "CEDAR VIEW SECOND ADDITION", an addition to Wichita, Sedgwick County, Kansas, into lots, a block, streets and reserves the same being accurately set forth in the accompanying plat and described herein:

A tract of land lying in the Northwest Quarter, Section 27, Township 27 South, Range 2 East of the 6th P.M., Sedgwick County, Kansas; more particularly described as follows:

A replat of Lot 3, Block 1 and Reserve "E" CEDAR VIEW ADDITION, an addition to Wichita Sedgwick County, Kansas.

All lots, blocks, streets, utility easements, drainage easements, reserves, and building setbacks within the above described property are hereby vacated and replatted by virtue of K.S.A. 12-512(b).

I hereby certify that the details of this plat are correct to the best of my knowledge and belief this ____ day of _____, 2000.

Gregory J. Allison, R.L.S. #1257
 Mid-Kansas Engineering Consultants, Inc.
 411 North Webb Road
 Wichita, Ks. 67206

Know all men by these presents that we the undersigned property owners of the land as above set forth in the Registered Land Surveyor's Certificate, have caused the same to be surveyed and platted into Lots, a Block, Streets and Reserves the same to be known as "CEDAR VIEW SECOND ADDITION", an addition to Wichita, Sedgwick County, Kansas. The streets are hereby dedicated to and for the use of the public. Easements for the construction and maintenance of public utilities, detention, and drainage, are hereby granted to the public. Reserve "A", is platted for drainage, lighting, landscaping, sidewalks, berming, open space, irrigation, utilities, and walkways. Reserve "B" is platted for utilities, lighting, landscaping, irrigation, entry monuments, and open space. Reserves shall be owned and maintained by the homeowners association. A drainage plan has been developed for this plat and all drainage easements right-of-way, or Reserves shall remain at established grades or as modified with the approval of the applicable City or County Engineer, and unobstructed to allow for the conveyance of storm water.

LEEWOOD HOMES, INC.

Joe H. Lee, President

STATE OF KANSAS)
) ss.
 SEDGWICK COUNTY)

BE IT REMEMBERED, that on this ____ day of _____, 2000, before me the undersigned, a Notary Public in and for the County and State aforesaid, came Joe H. Lee, President, Leewood Homes, Inc., to me personally known to be the same person who executed the foregoing instrument of writing and duly acknowledged the execution of the same.

IN WITNESS WHEREOF, I have hereunto set my hand and affixed my official seal, the day and year above written.

Notary Public, Ann Ybarra

My appointment expires: _____

This plat of "CEDAR VIEW SECOND ADDITION", has been submitted to and approved by the Wichita-Sedgwick County Metropolitan Area Planning Commission, Wichita, Kansas.
 Dated this ____ day of _____, 2000.

WICHITA-SEDGWICK COUNTY METROPOLITAN PLANNING COMMISSION

Francis S. Garafalo, Chairman

Marvin S. Krout, Secretary

Consent is hereby given for the formation of a SANITARY SEWER DISTRICT within the boundary of this plat by the board of Sedgwick County Commissions, as they deem necessary to provide sanitary sewer service to this area.

This plat approved and all dedications shown thereon, if any, accepted by the City Council of the City of Wichita, Kansas, this ____ day of _____, 2000.

Bob Knight, Mayor

Pat Burnett, City Clerk

Entered on transfer record this ____ day of _____, 2000.

James Alford, County Clerk

STATE OF KANSAS)
) ss.
 SEDGWICK COUNTY)

This is to certify that this instrument was filed for record in the Register of Deeds office this ____ day of _____, 2000.

Bill Meek, County Clerk

Linda Kizzire, Deputy

Reviewed in accordance with K.S.A. 58-2005 on this ____ day of _____, 2000.

Tricia L. Robello, LS #1246
 Deputy County Surveyor
 Sedgwick County, Kansas