

**GENERAL NOTES**

The Contractor shall be responsible for preserving existing property irons shown on plans. The Contractor will be required to reestablish any shown property irons which are damaged or destroyed by his construction operations. Such irons shall be reestablished by a licensed land surveyor in accordance with state laws.

Utility service lines, poles, valve boxes, meters, etc... are to be adjusted as necessary by others prior to construction unless the plans specifically call for their adjustment by the contractor. The contractor will be required to work around existing utilities within the right-of-way which do not conflict with proposed construction.

Existing utilities and their locations, as shown on the plans represent the best information obtainable for design. Location information has been obtained from the various utility companies and is either from company record drawings or company provided field locations. The plan locations shown are not guaranteed. Additional existing utilities may also be encountered.

A licensed land surveyor shall take field ties to all quarter section corners. The contractor shall set a city survey monument in the required location where such quarter section corners fall within the limits of pavement construction. Survey monuments will be furnished by the city. The surveyor will accurately locate and install the iron at the quarter section corner.

The contractor shall adjust water valve boxes as directed by the engineer at the price bid for said adjustments. The water department shall field locate water valves one time during construction when requested by the contractor. It shall be the contractor's responsibility to preserve such field locations during the construction process. Water valves or water valve boxes damaged during construction shall be repaired by the contractor at his own expense.

All stationing, radii, pavement widths, offset distances, etc... are measured to the Face of the curb unless otherwise noted on the plans. Proposed elevations are at the high edge from Sta. 78+99.39 to Sta. 110+05.62 Lt. and Sta. 78+99.39 to Sta. 111+64.88 Rt. Proposed elevations are at the face of curb from Sta. 110+75.90 to Sta. 144+99.78 Lt. and Sta. 112+54.80 to Sta. 144+99.78 Rt.

Properties within the project limits may have underground sprinkler in public right-of-way which conflict with new construction. Contractor will be required to remove such improvements should they not be removed by the owner at the time of construction of the project. The contractor will be required to lay back all sprinkler heads and/or valves on owners property. Portions of underground sprinkler systems not in conflict with new construction shall be protected from damage and shall remain in place. All work in connection with existing underground sprinkler systems shall be considered as Subsidiary to project.

Connection of existing storm sewers or drainage structures to proposed conduits and/or structures shall include all material, equipment and labor. These connections shall not be paid for directly, but shall be considered Subsidiary to the various proposed conduits or structures. This work shall be as directed by the engineer.

A full depth saw cut of the existing surface shall be provided at locations where proposed new construction abuts an existing concrete or bituminous surface for which at least partial removal of that surface is required. Saw cuts shall not be paid for directly, but shall be considered Subsidiary to various surfacing items involved.

All disposal sites must be approved by the Kansas Department of Health and Environment. Material either stockpiled or disposed of in a flood plain would require a Kansas State board of Agriculture permit. Any material in water of the United States or wetlands is subject to U.S. Corps of Engineers permitting regulations.

Any material buried or stockpiled beyond approved construction limits would require additional archeological investigations unless buried in a previously approved borrow location.

All pipes, casting, signals and other material removed shall become the property of the C.O.W. Contractor shall stock pile on right-of-way. C.O.W. will recover salvageable material and contractor shall remove remaining material.

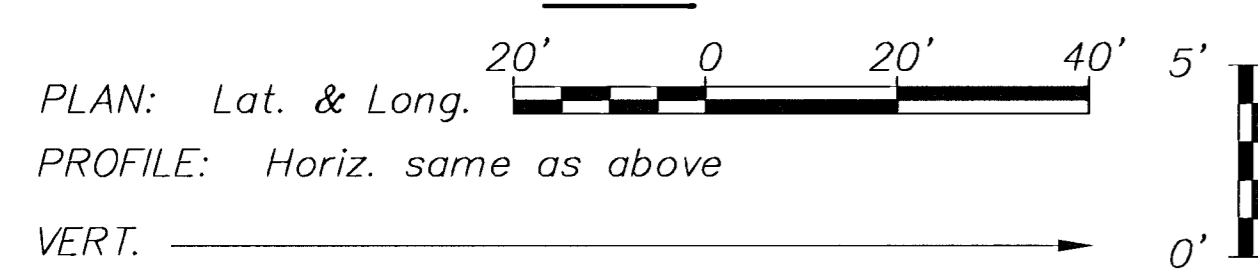
Excavation shown to be wasted shall be wasted on sites provided by the contractor. These sites shall be approved by the engineer as to suitability, appearance, and site location. Locations that, in the opinion of the engineer, will leave an unsightly appearance will not be approved.

All trees 4" Diameter or greater shall be removed to a distance of 6' behind the curb. Costs shall be paid as clearing and grubbing.

Contractor shall remove and stockpile on right-of-way all regulatory signs—street name, stop sign, speed limit sign, etc. during construction. C.O.W. shall reset upon the completion of the project. Cost shall be Subsidiary to "Removal of Existing Structures".

Elevations are in City of Wichita Datum  
U.S.G.S. = C.O.W. Datum + 1187.4

**SCALE**



**PROJECT SURVEY CONTROL**

Vert. Datum: National Geodetic Vertical Datum of 1929

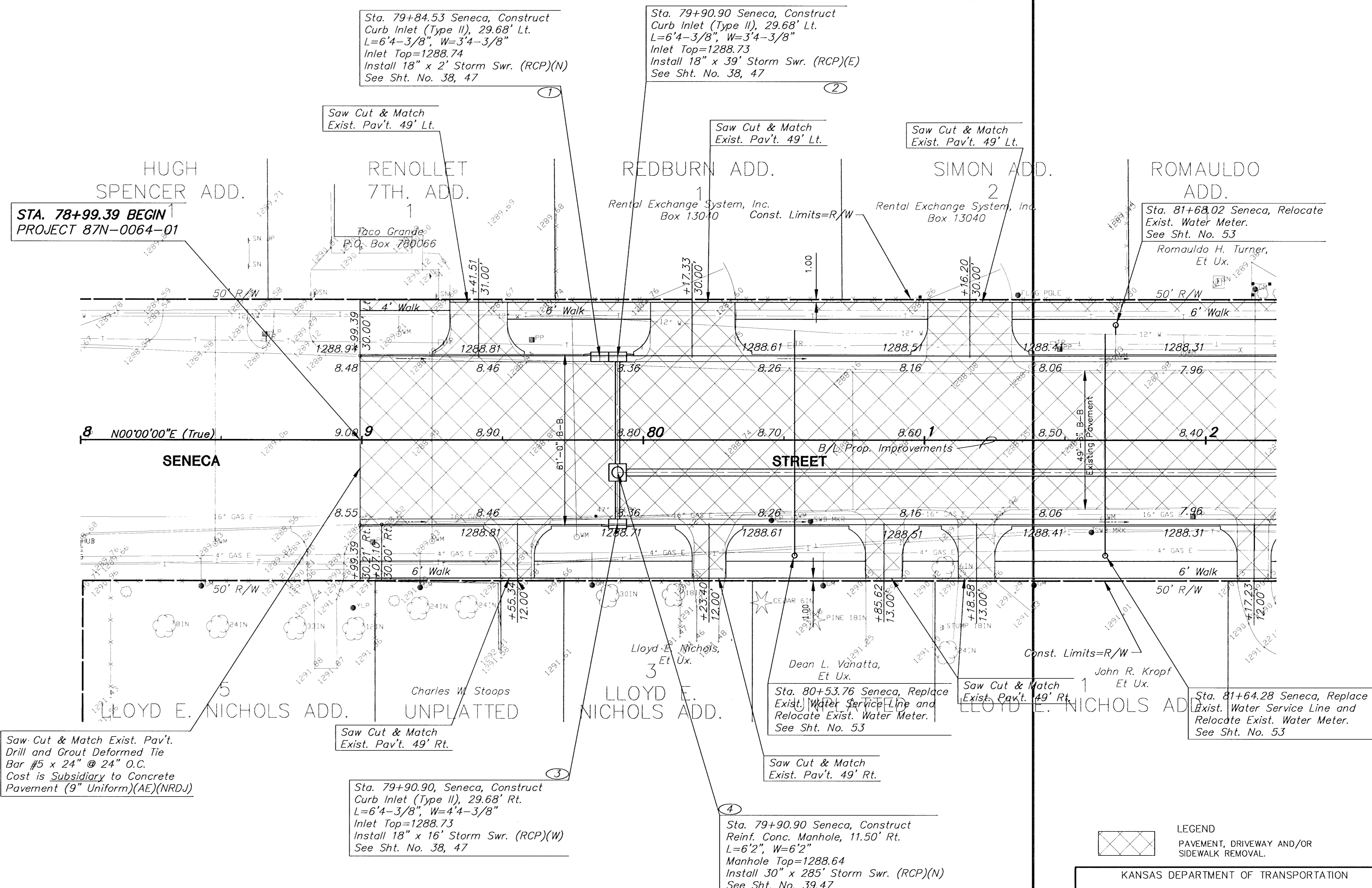
Datum B.M. = "L1" Cut on the NE cor. of inlet @ NE cor. of 30th. St. So. and Seneca. Sta. 24+33.31, 58.58' Rt. Elev.=1282.24

P.I. STA. 70+84.68

S.E. Cor. Sec. 31, T27S, R1E

1. Found Pipe in Thimble @ Seneca & Pawnee
2. SE Cor. Conc. Signal Pole Base 68.3' N.E.
3. NE Cor. Conc. Signal Pole Base 68.7' S.E.
4. NE Cor. Conc. Signal Pole Base 69.1' S.W.
5. SE Cor. Conc. Signal Pole Base 67.1' N.W.

FHWA REG NO.	STATE	PROJECT NO.	YEAR	SHEET NO.	SHEETS
7	KANSAS	87N 0064-01	1997	3	130



**UTILITY OWNERS**

- W - City of Wichita Water & Sewer Department (316)268-4908
- T - Southwestern Bell Telephone Co. 1-571-2115
- E - Kansas Gas and Electric (316)832-3169 or 832-3180
- CATV - Multimedia Cablevision (316)262-4270
- SS - City of Wichita Water & Sewer Department (316)268-4908
- SWS - City of Wichita Water & Sewer Department (316)268-4908

LEGEND  
PAVEMENT, DRIVEWAY AND/OR SIDEWALK REMOVAL

KANSAS DEPARTMENT OF TRANSPORTATION

**SOUTH SENECA STREET  
78+99.39 TO 82+00**

PROJECT NO. 87N 0064-01 SEDGWICK CO.

**MID-KANSAS ENGINEERING CONSULTANTS, INC.**  
WICHITA, KANSAS

DESIGNED BY: GJA	CHECKED BY: GJA
DRAWN BY: WNU	DATE: 8/95 SHEET 3 OF 130

300523