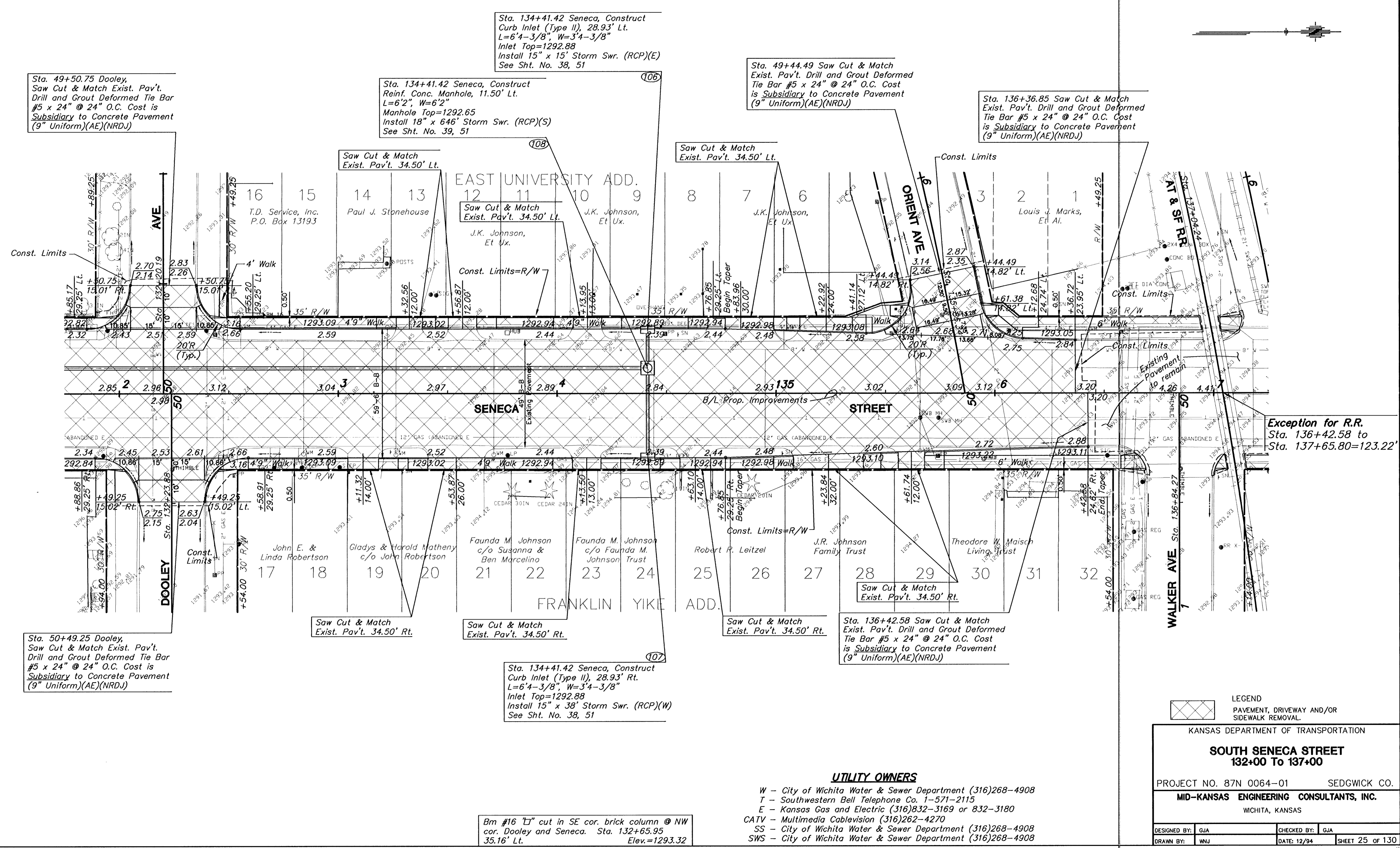
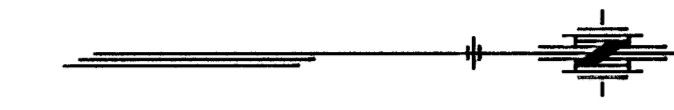


FHWA REG NO.	STATE	PROJECT NO.	YEAR	SHEET NO.	SHEETS
7	KANSAS	87N 0064-01	1997	25	130



Sta. 49+50.75 Dooley, Saw Cut & Match Exist. Pav't. Drill and Grout Deformed Tie Bar #5 x 24" @ 24" O.C. Cost is Subsidiary to Concrete Pavement (9" Uniform)(AE)(NRDJ)

Sta. 134+41.42 Seneca, Construct Curb Inlet (Type II), 28.93' Lt. L=6'-3/8", W=3'-3/8" Inlet Top=1292.88 Install 15" x 15' Storm Swr. (RCP)(E) See Sht. No. 38, 51

Sta. 134+41.42 Seneca, Construct Reinf. Conc. Manhole, 11.50' Lt. L=6'2", W=6'2" Manhole Top=1292.65 Install 18" x 646' Storm Swr. (RCP)(S) See Sht. No. 39, 51

Sta. 49+44.49 Saw Cut & Match Exist. Pav't. Drill and Grout Deformed Tie Bar #5 x 24" @ 24" O.C. Cost is Subsidiary to Concrete Pavement (9" Uniform)(AE)(NRDJ)

Sta. 136+36.85 Saw Cut & Match Exist. Pav't. Drill and Grout Deformed Tie Bar #5 x 24" @ 24" O.C. Cost is Subsidiary to Concrete Pavement (9" Uniform)(AE)(NRDJ)

Sta. 50+49.25 Dooley, Saw Cut & Match Exist. Pav't. Drill and Grout Deformed Tie Bar #5 x 24" @ 24" O.C. Cost is Subsidiary to Concrete Pavement (9" Uniform)(AE)(NRDJ)

Saw Cut & Match Exist. Pav't. 34.50' Rt.

Saw Cut & Match Exist. Pav't. 34.50' Rt.

Sta. 134+41.42 Seneca, Construct Curb Inlet (Type II), 28.93' Rt. L=6'-3/8", W=3'-3/8" Inlet Top=1292.88 Install 15" x 38' Storm Swr. (RCP)(W) See Sht. No. 38, 51

Saw Cut & Match Exist. Pav't. 34.50' Rt.

Sta. 136+42.58 Saw Cut & Match Exist. Pav't. Drill and Grout Deformed Tie Bar #5 x 24" @ 24" O.C. Cost is Subsidiary to Concrete Pavement (9" Uniform)(AE)(NRDJ)

Exception for R.R. Sta. 136+42.58 to Sta. 137+65.80=123.22'

Bm #16 "I" cut in SE cor. brick column @ NW cor. Dooley and Seneca. Sta. 132+65.95 Elev.=1293.32

LEGEND  
 PAVEMENT, DRIVEWAY AND/OR SIDEWALK REMOVAL.

KANSAS DEPARTMENT OF TRANSPORTATION

**SOUTH SENECA STREET**  
 132+00 TO 137+00

PROJECT NO. 87N 0064-01 SEDGWICK CO.

**MID-KANSAS ENGINEERING CONSULTANTS, INC.**  
 WICHITA, KANSAS

DESIGNED BY: GJA CHECKED BY: GJA  
 DRAWN BY: WNJ DATE: 12/94 SHEET 25 OF 130

- UTILITY OWNERS**
- W - City of Wichita Water & Sewer Department (316)268-4908
  - T - Southwestern Bell Telephone Co. 1-571-2115
  - E - Kansas Gas and Electric (316)832-3169 or 832-3180
  - CATV - Multimedia Cablevision (316)262-4270
  - SS - City of Wichita Water & Sewer Department (316)268-4908
  - SWS - City of Wichita Water & Sewer Department (316)268-4908

H:\CIVIL\SENECA\94005\PAVE\94005E20.FPJ May 30 11:12:21 1997

94005E20