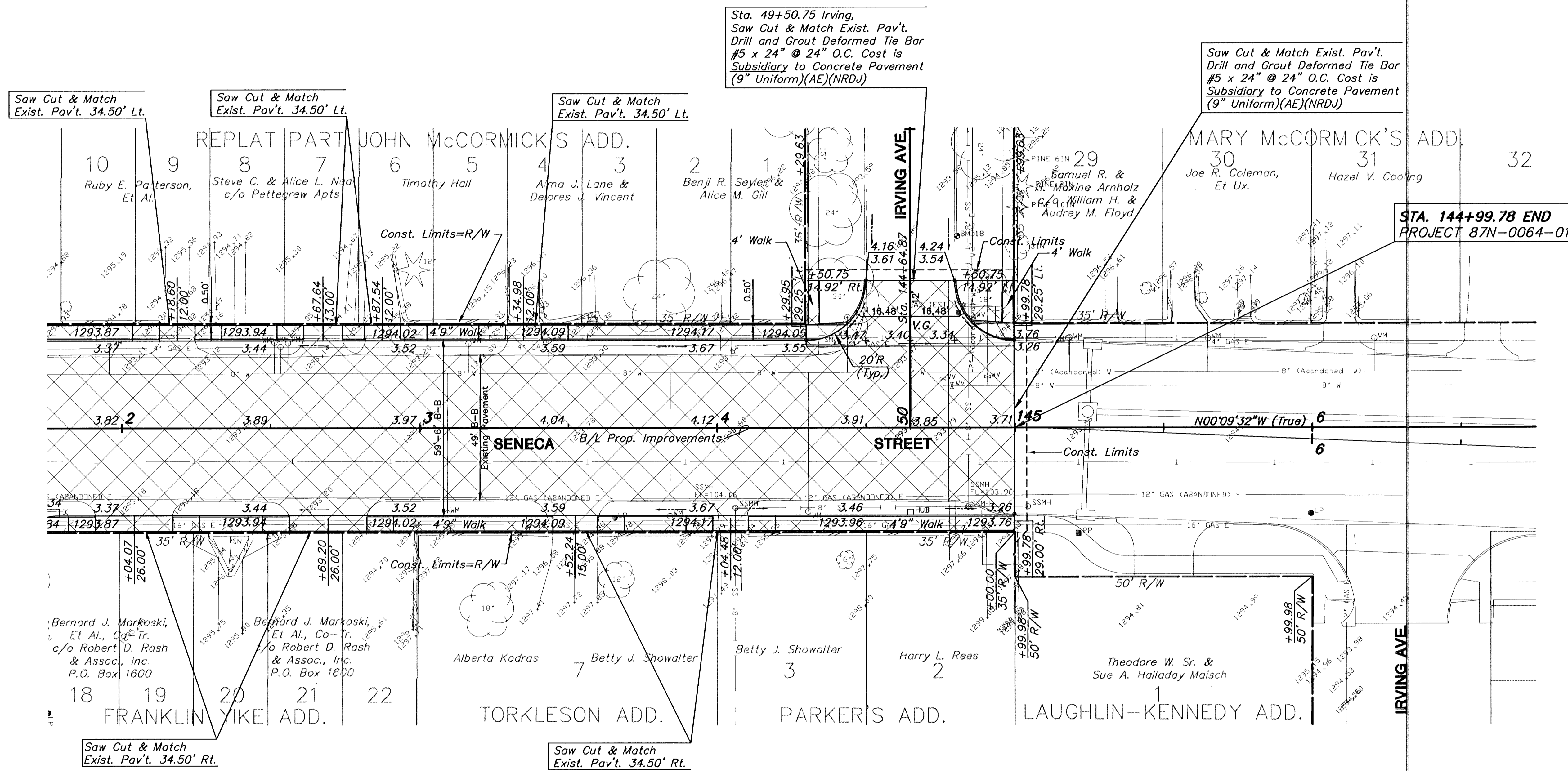


FHWA REG NO.	STATE	PROJECT NO.	YEAR	SHEET NO.	SHEETS
7	KANSAS	87N 0064-01	1997	29	130

P.I. STA. 150+00.00
 E 1/4 Sec. 30, T27S, R1E
 1. Found Pipe in Thimble @ Seneca & McCormick
 2. SW Cor. of Bldg. 123.1' N.E.
 3. SE Cor. of Bldg. 96.0' N.N.W.
 4. NE Cor. of Bldg. 126.4' S.W.
 5. NW Cor. of Bldg. 91.6' S.E.



Sta. 49+50.75 Irving,
 Saw Cut & Match Exist. Pav't.
 Drill and Grout Deformed Tie Bar
 #5 x 24" @ 24" O.C. Cost is
 Subsidiary to Concrete Pavement
 (9" Uniform)(AE)(NRDJ)

Saw Cut & Match Exist. Pav't.
 Drill and Grout Deformed Tie Bar
 #5 x 24" @ 24" O.C. Cost is
 Subsidiary to Concrete Pavement
 (9" Uniform)(AE)(NRDJ)

Saw Cut & Match
 Exist. Pav't. 34.50' Lt.

Saw Cut & Match
 Exist. Pav't. 34.50' Lt.

Saw Cut & Match
 Exist. Pav't. 34.50' Lt.

STA. 144+99.78 END
 PROJECT 87N-0064-01

Bernard J. Markoski,
 Et Al., Co-Tr.
 c/o Robert D. Rash
 & Assoc., Inc.
 P.O. Box 1600

Saw Cut & Match
 Exist. Pav't. 34.50' Rt.

Saw Cut & Match
 Exist. Pav't. 34.50' Rt.

BM #18 "I" cut Top of curb, North side
 of Irving. Sta. 144+80.64
 Elev.=1293.80

UTILITY OWNERS

- W - City of Wichita Water & Sewer Department (316)268-4908
- T - Southwestern Bell Telephone Co. 1-571-2115
- E - Kansas Gas and Electric (316)832-3169 or 832-3180
- CATV - Multimedia Cablevision (316)262-4270
- SS - City of Wichita Water & Sewer Department (316)268-4908
- SWS - City of Wichita Water & Sewer Department (316)268-4908

LEGEND
 [Hatched Box] PAVEMENT, DRIVEWAY AND/OR
 SIDEWALK REMOVAL.

KANSAS DEPARTMENT OF TRANSPORTATION

SOUTH SENECA STREET
142+00 TO 144+99.78

PROJECT NO. 87N 0064-01 SEDGWICK CO.

MID-KANSAS ENGINEERING CONSULTANTS, INC.
 WICHITA, KANSAS

DESIGNED BY: GJA	CHECKED BY: GJA
DRAWN BY: WNJ	DATE: 8/95 SHEET 29 OF 130

H:\CIVIL\SENECA\94005\PAVE\94005E29.F3 May 30 11:44:30 1997

94005E29