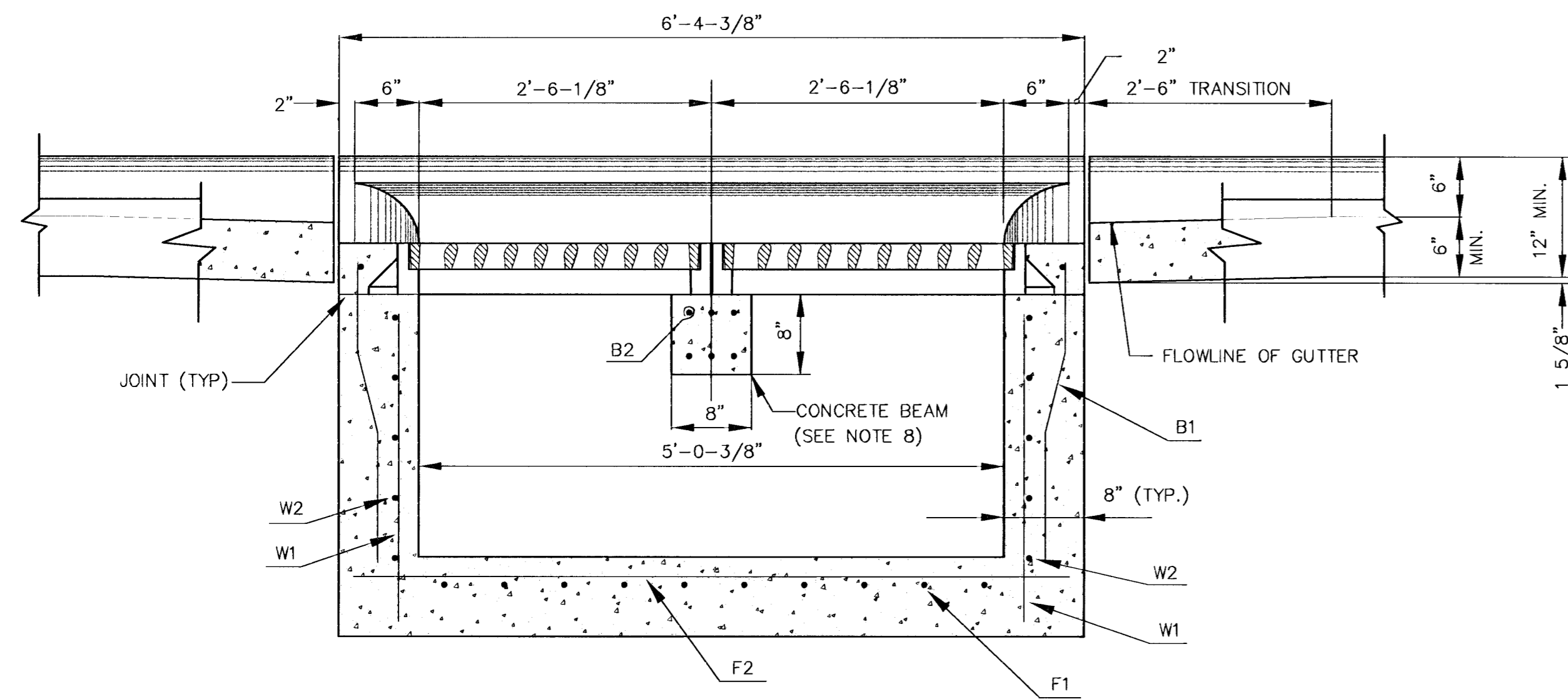
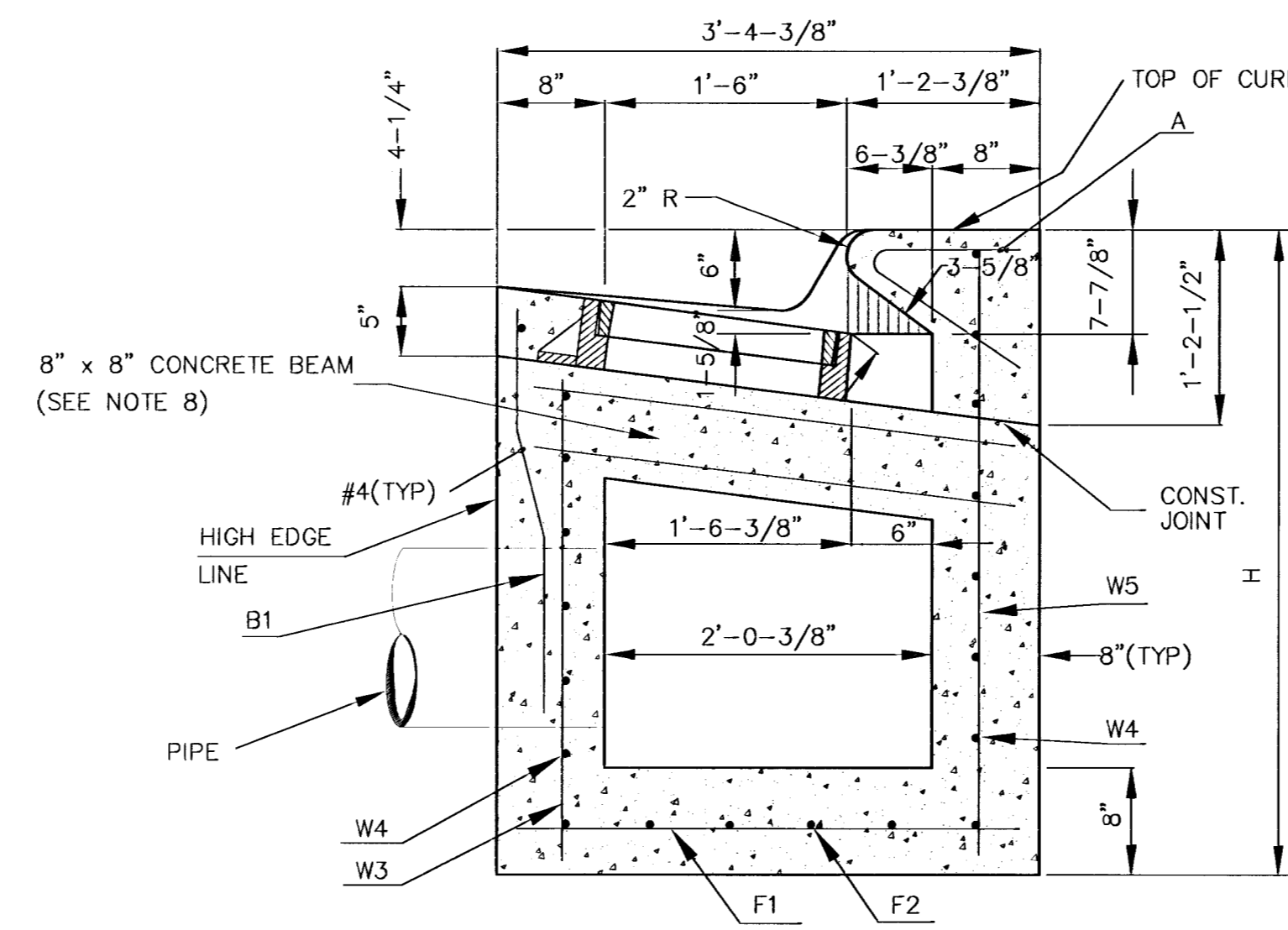


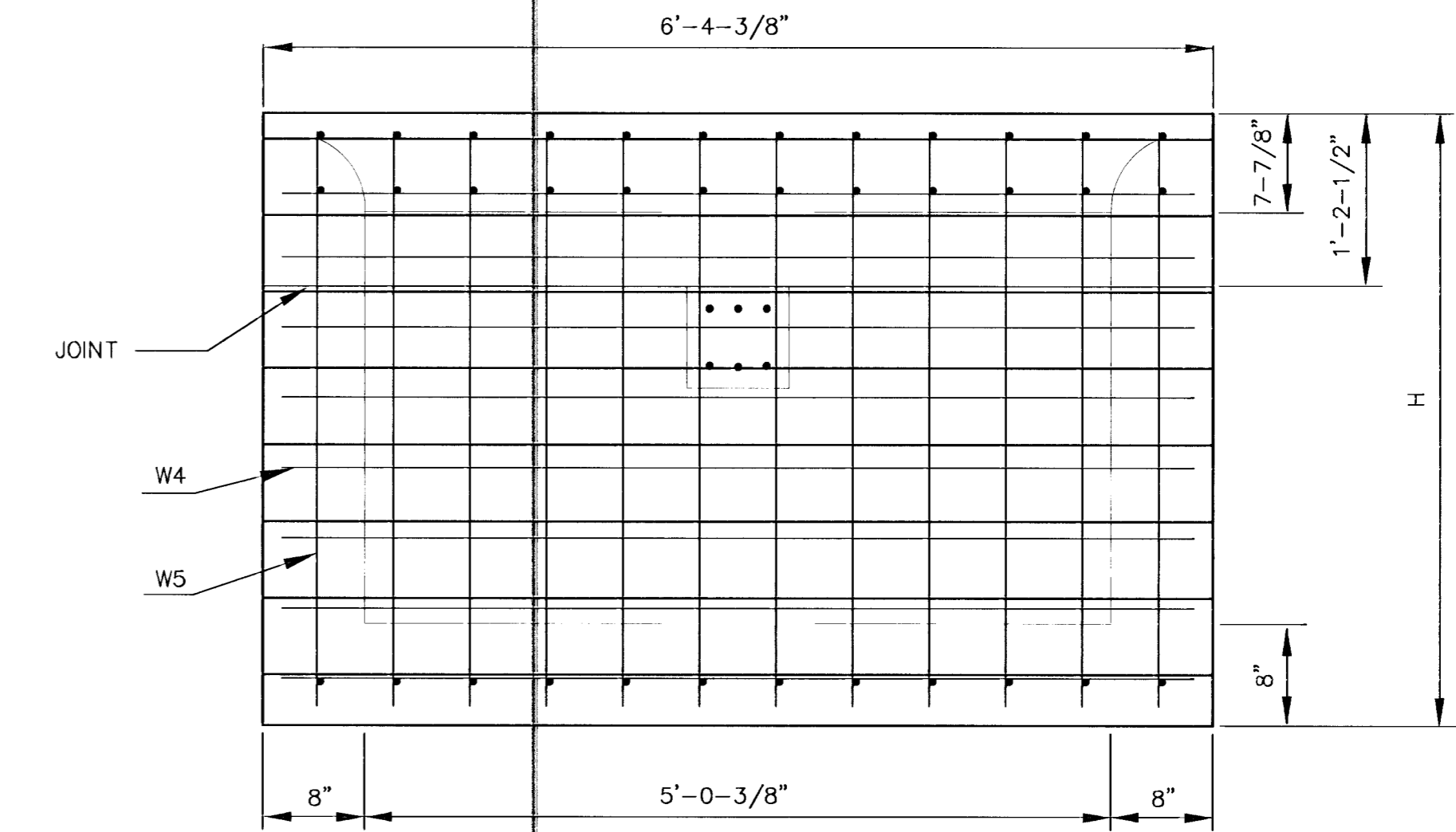
FHWA REG. NO.	STATE	PROJECT NO.	YEAR	SHEET NO.	SHEETS
7	KANSAS	87N 0064-01	1997	38	130



SECTION C - C

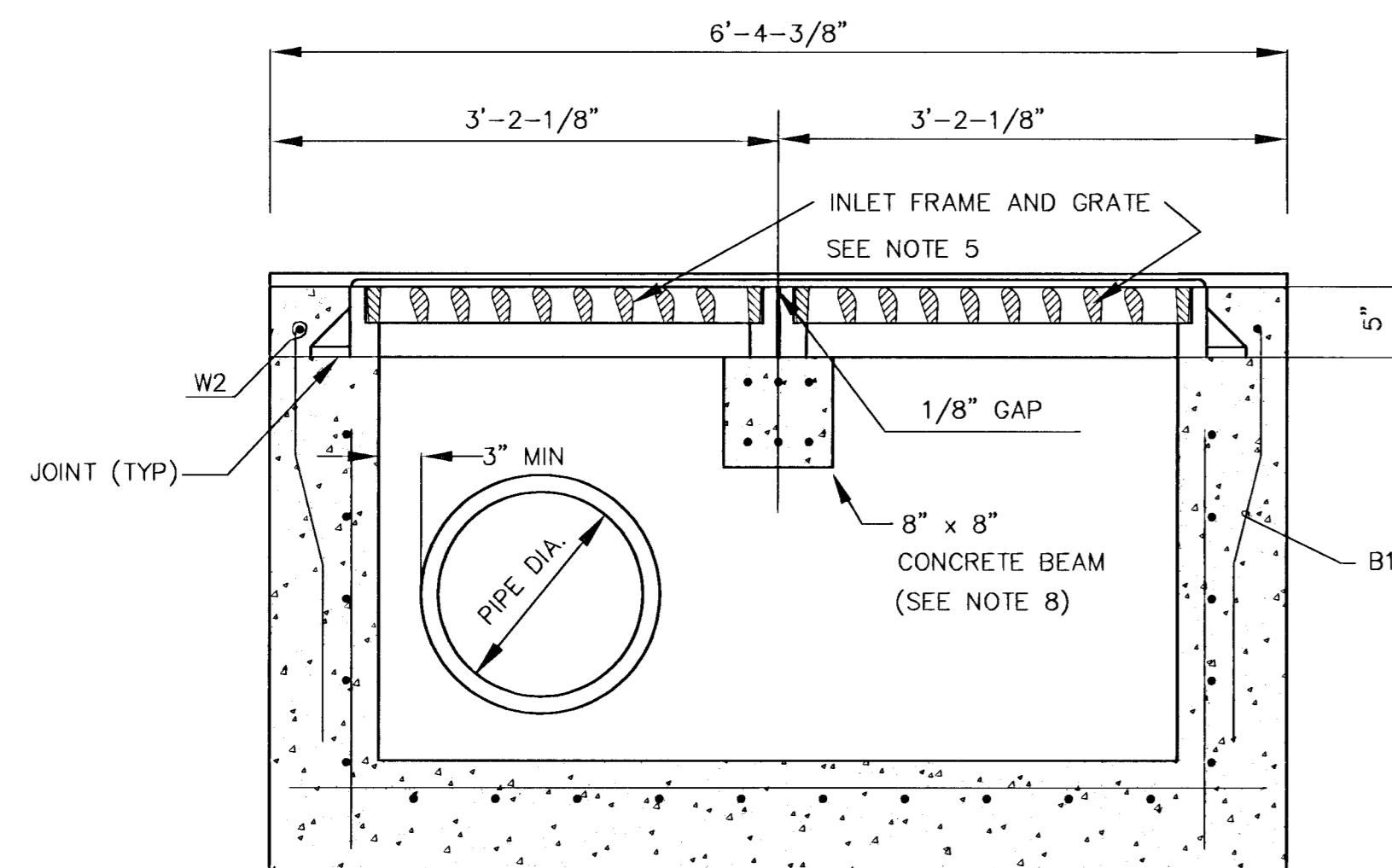


SECTION A - A

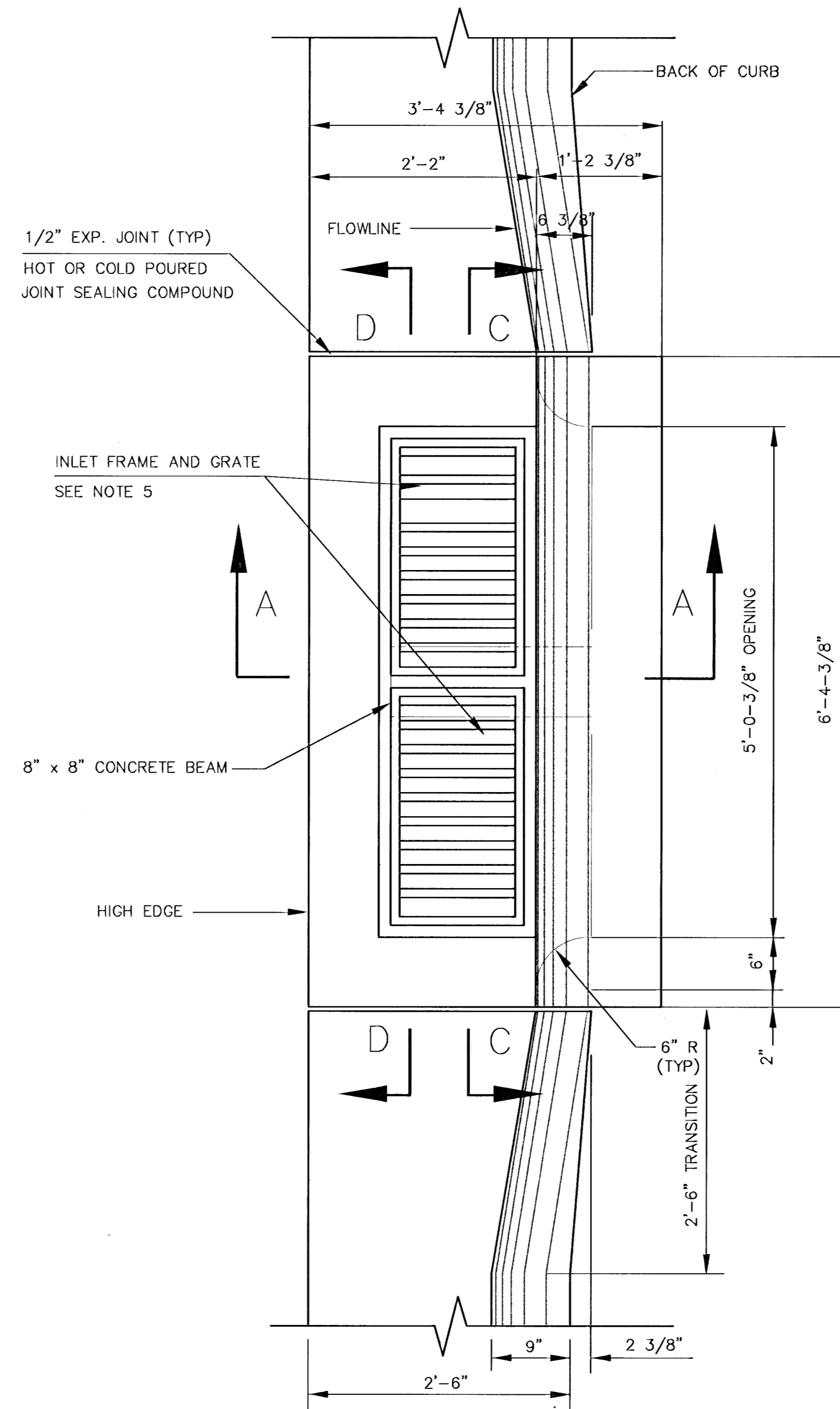


REBAR SIZES, SPACING, AND CLEARANCES PER NOTE 3.

REAR WALL



SECTION D - D

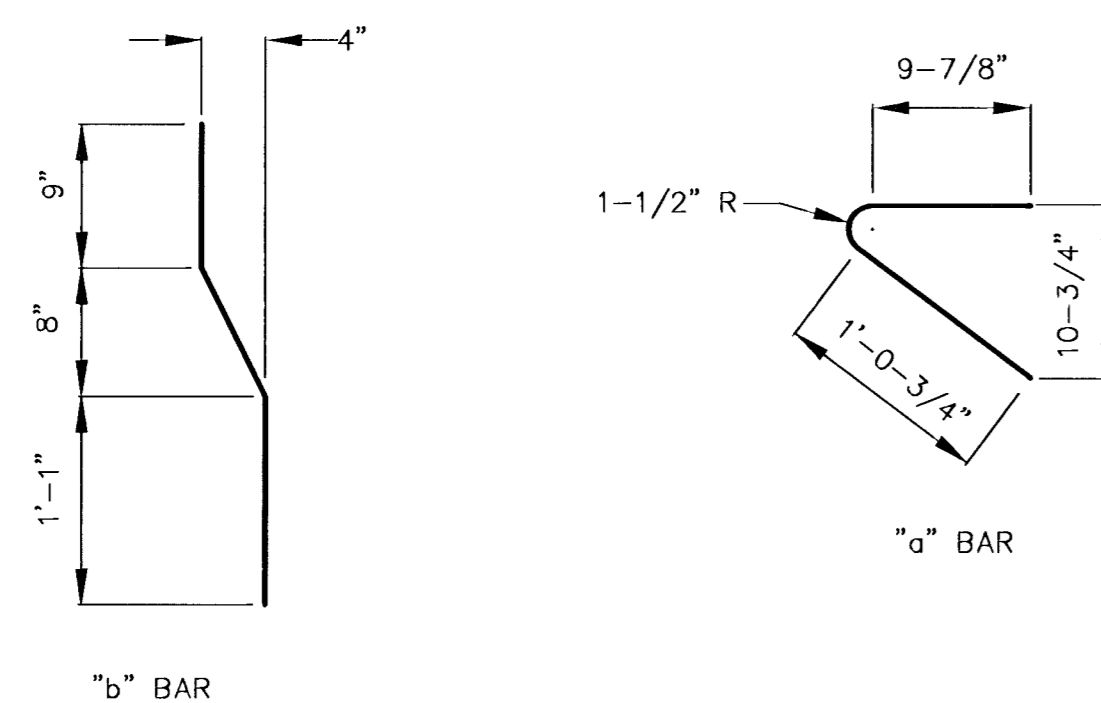
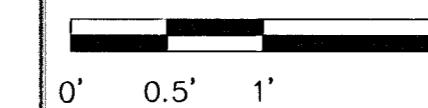


GENERAL NOTES

- USE THE CONCRETE MIX SPECIFIED FOR THE CITY OF WICHITA CONCRETE PAVEMENT THROUGHOUT. ALL EXPOSED EDGES SHALL BE FINISHED WITH AN EDGING TOOL.
- INLET INVERT SHALL BE SHAPED WITH 8 SACK MIX CONCRETE TO CREATE FLOW CHANNELS AND TO INCREASE HYDRAULIC EFFICIENCY SUCH THAT THE INLET WILL BE SELF CLEANING BETWEEN ALL INLET AND/OR OUTLET PIPES.
- ALL BARS ARE #4 WITH 6" SPACING AND SHALL HAVE A MINIMUM CLEARANCE OF 1-1/2" UNLESS OTHERWISE NOTED ON THE PLANS.
- NO DEDUCTIONS WILL BE MADE IN PAY LENGTH OF CURB, GUTTER, OR CURB AND GUTTER THROUGH THE INLET AREA.
- USE DEETER 2442 & 2443 INLET FRAMES WITH GRATES OR APPROVED EQUAL. INLET FRAMES TO BE PROOF LOAD TESTED TO 40,000 LBS ON UNSUPPORTED SIDE.
- REINFORCING BARS SHALL BE CUT OR BENT AROUND PIPES. NO DEDUCTION IN CONCRETE QUANTITIES SHALL BE MADE FOR PIPE OPENINGS.
- THE VANES OF THE GRATE SHALL BE ORIENTED TO INTERCEPT FLOW FROM THE DIRECTION SHOWN BY FLOW ARROWS ON THE PLANS.
- ALTERNATE: IN LIEU OF CONCRETE BEAM, INSTALL A GALVANIZED STEEL W8x24 BEAM 3' LONG. STEEL AND GALVANIZING SHALL MEET THE REQUIREMENTS OF ASTM A36 AND A123 RESPECTIVELY.
- SEE PAVEMENT UNDERDRAIN DETAIL SHEET 53.
- SEE REINFORCING STEEL FOR INLETS AND MANHOLES.

SCALE

1" = 1'-0"



BENDING DIAGRAM

KANSAS DEPARTMENT OF TRANSPORTATION	
DETAIL TYPE II	
CURB INLET	
INLET OPENING = 3 5/8" x 5'-0 3/8"	
(KDOT CURB)	
PROJECT NO. 87N 0064-01	SEDGWICK CO.
MID-KANSAS ENGINEERING CONSULTANTS, INC.	
WICHITA, KANSAS	
DESIGNED BY:	CHECKED BY:
DRAWN BY: WNJ	DATE: