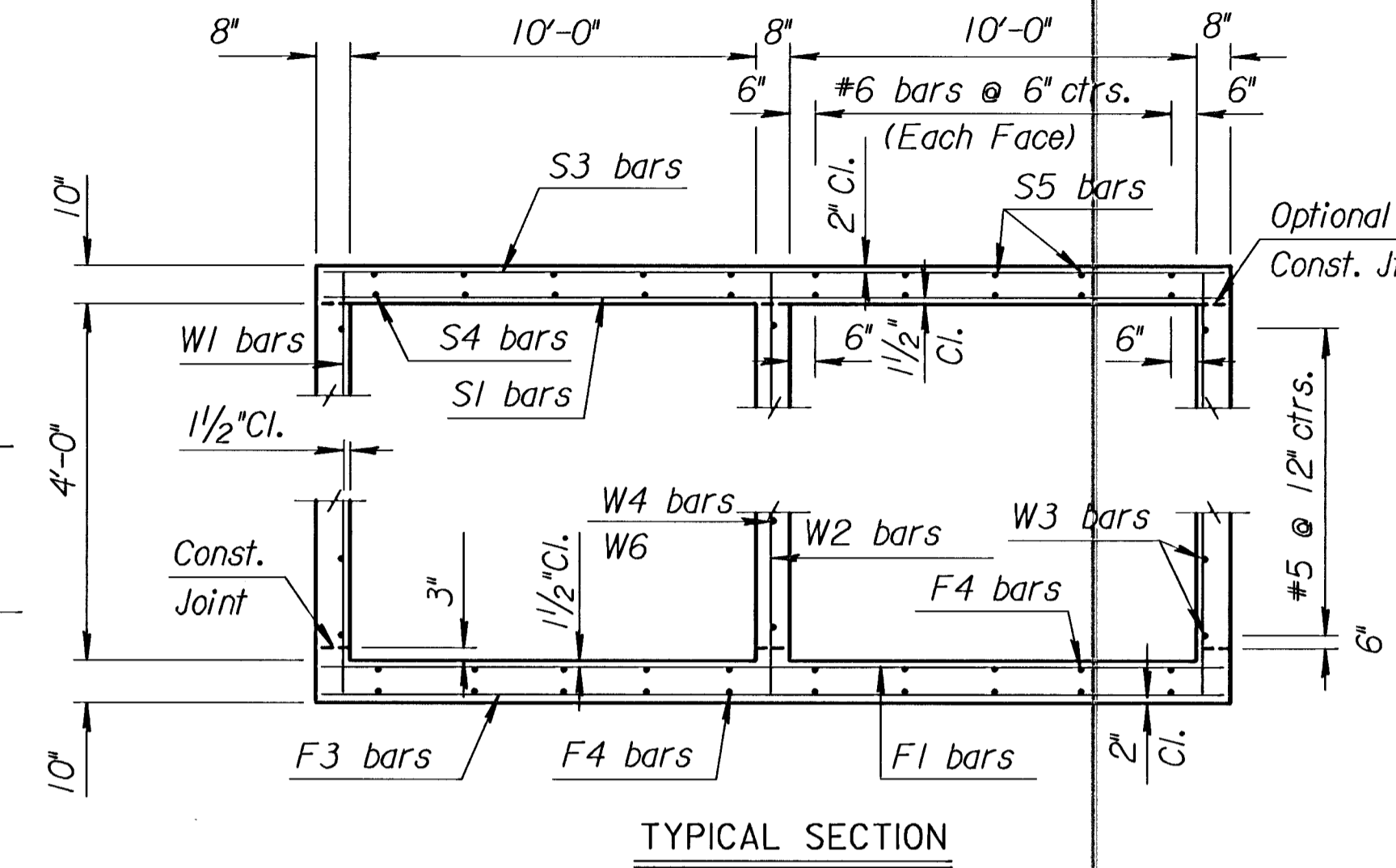
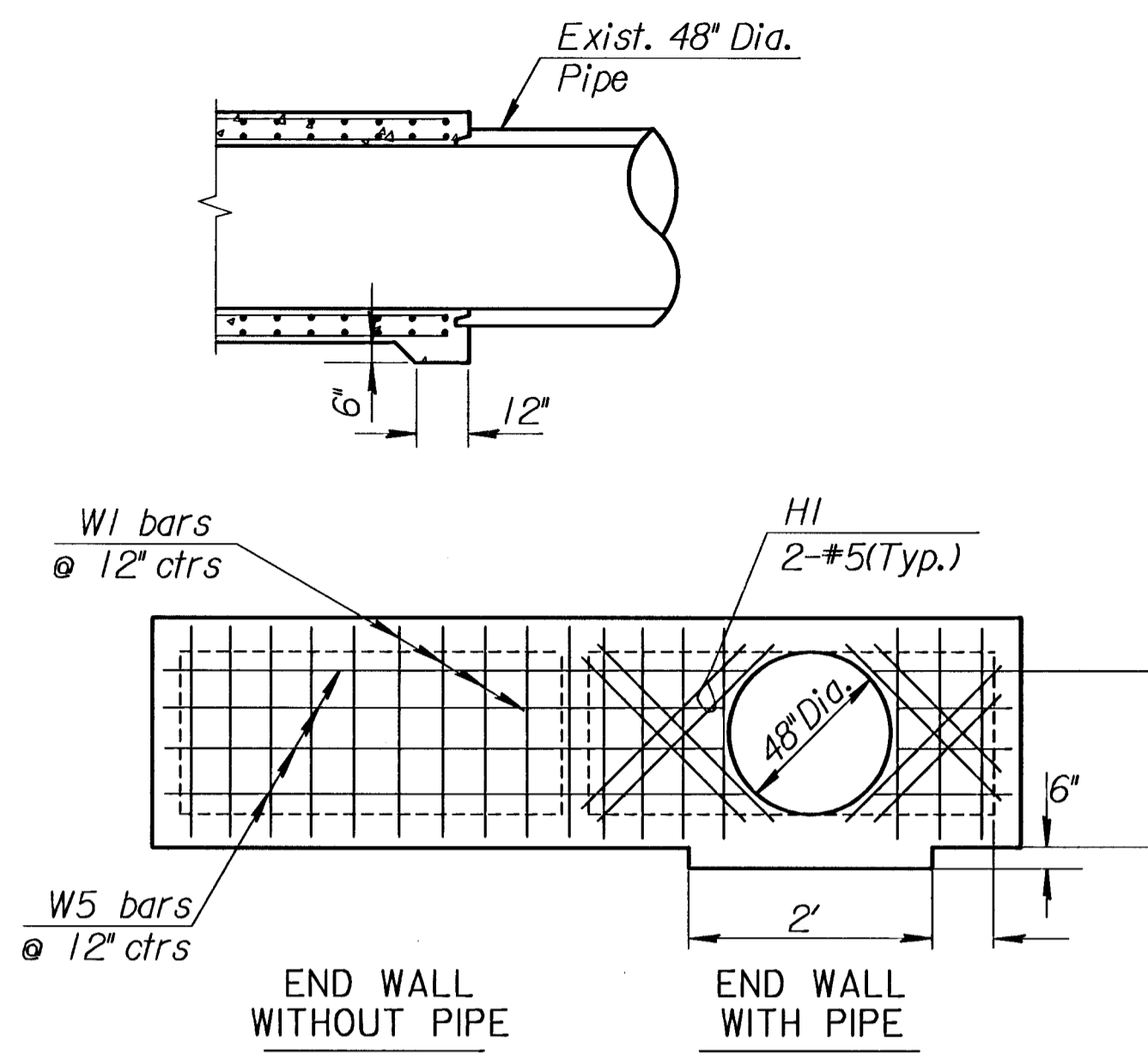
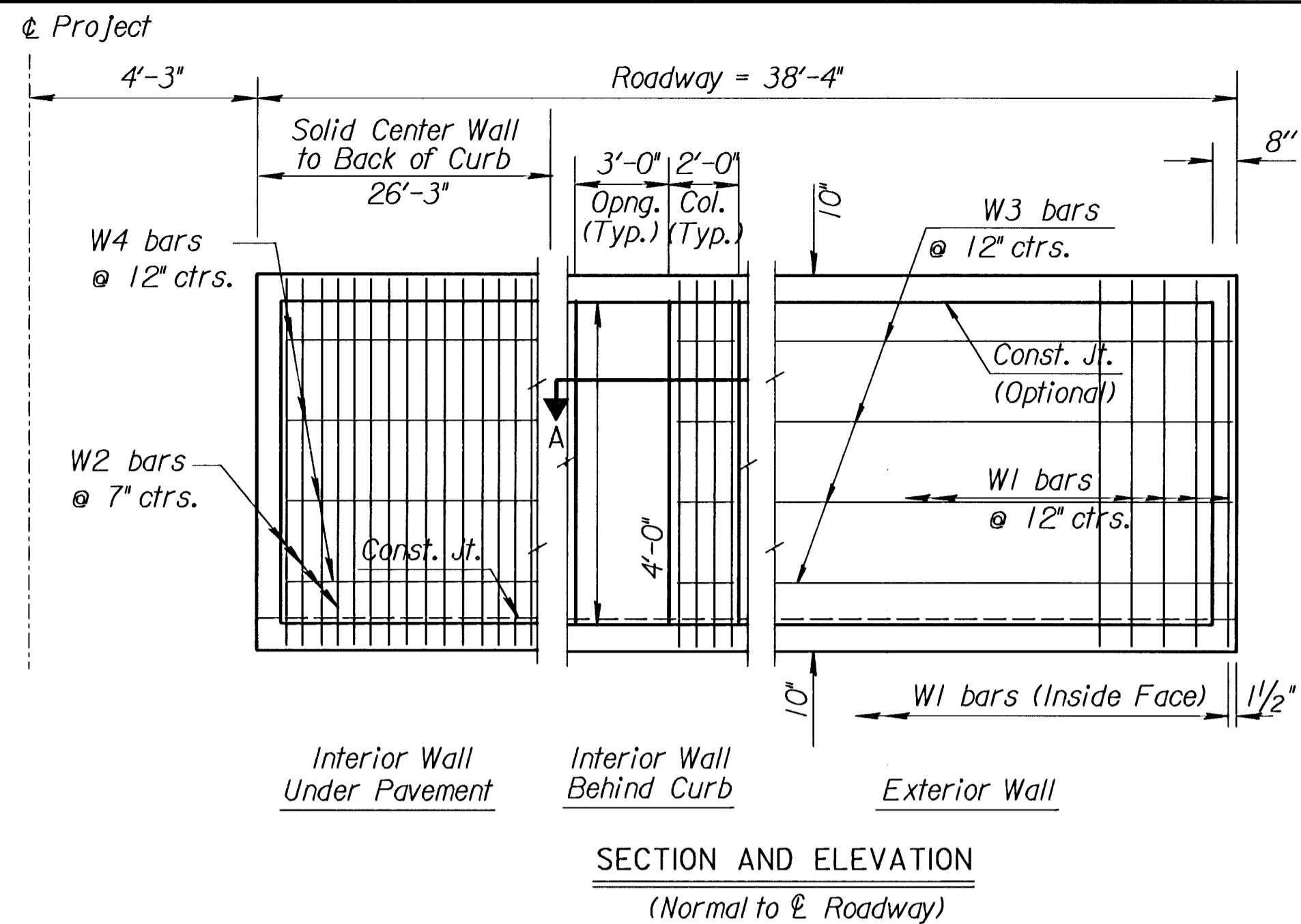


VERSION: 5.1.0 COMPILED: 03/01/95
 VERSION: 5.1.0 COMPILED: 03/01/95

PROJ. NO.	DESIGN	DATE	DATE	DATE	DATE
DESIGN	DETAIL	DATE	DATE	DATE	DATE
QUANTITIES	TRAINING	DATE	DATE	DATE	DATE
REVISIONS		DATE	DATE	DATE	DATE

Drawn By: \$\$\$USERNAME\$\$\$
 DGN File: \$\$\$DGNFILE\$\$\$
 Plotted: \$\$\$STTIME\$\$\$ View=

FHWA REGION NO.	STATE	PROJECT NO.	YEAR	SHEET NO.	TOTAL SHEETS
7	KANSAS	87N 0064-01	1997	42	130

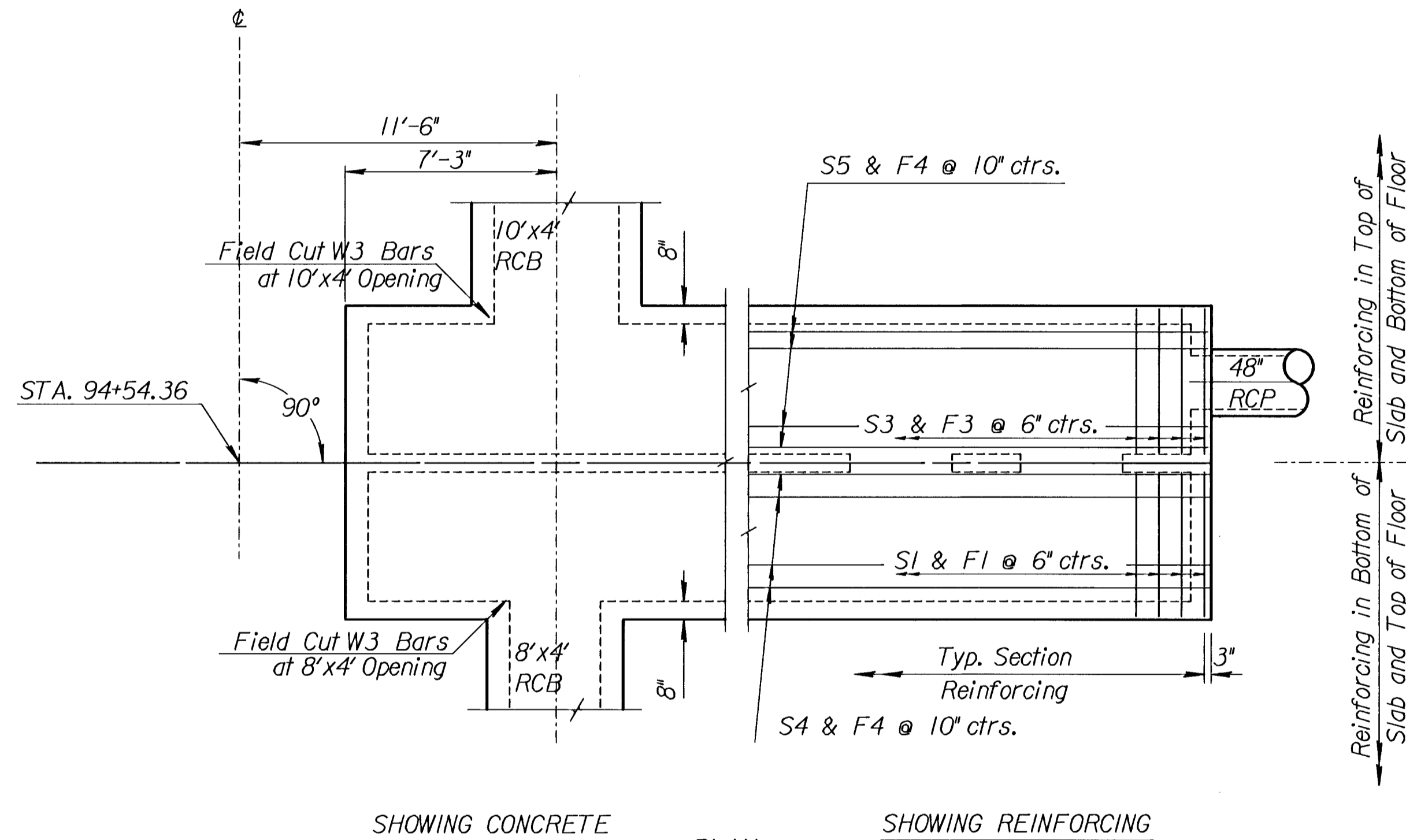


SECTION AND ELEVATION
(Normal to Roadway)

TYPICAL SECTION

GENERAL NOTES

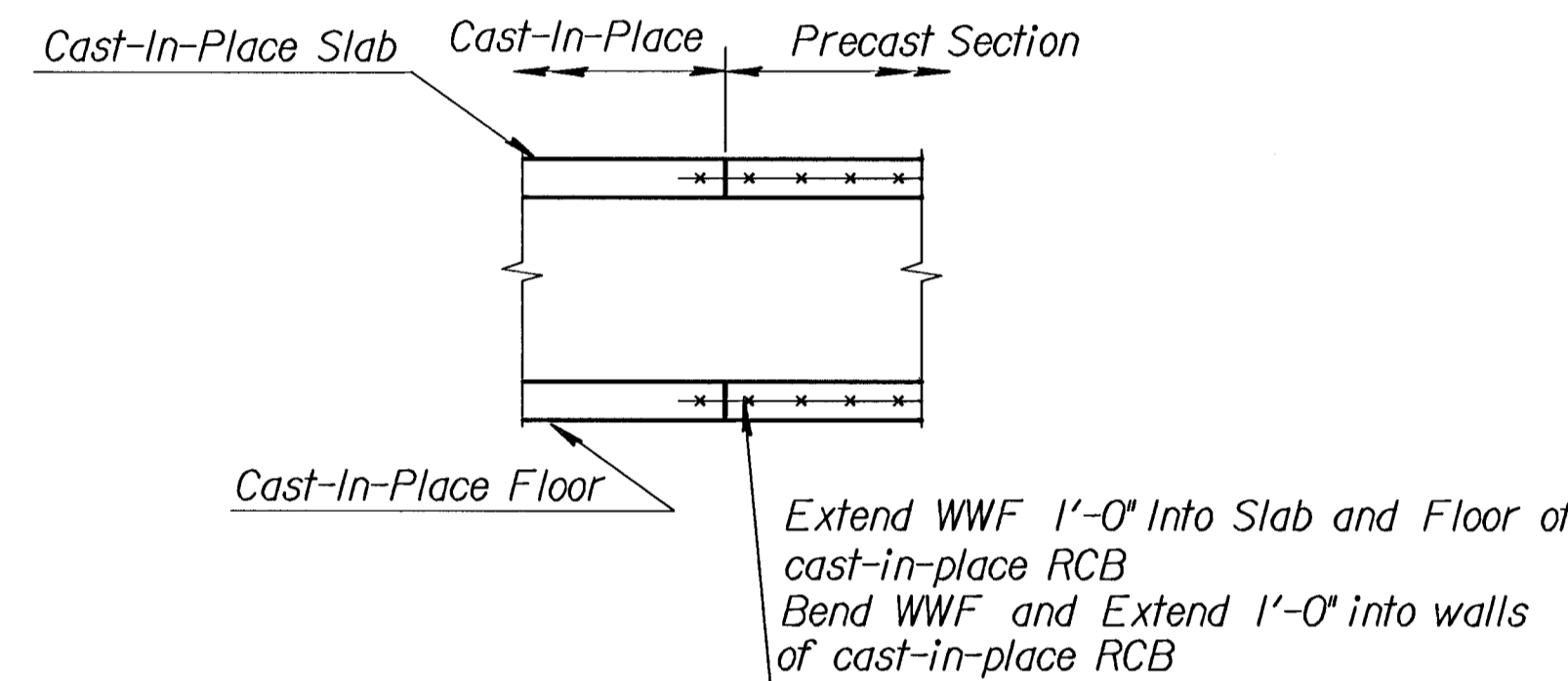
LOADING: HS20-44 AASHTO Specifications, 1996 Edition.
UNIT STRESSES: Class AAA Concrete; $f'c = 4,000$ p.s.i.
 Reinforcing Steel; $f_y = 60,000$ p.s.i.
FILL HEIGHT: Unless otherwise noted, the Design Fill Height is measured from the riding surface at the culvert and shall include the surfacing.
CONCRETE: Class AAA Concrete shall be used throughout. Bevel all exposed edges with a $\frac{3}{4}$ inch triangular moulding. Where Class AAA Concrete (AE) is specified, it shall be placed in the top slab above the Construction Joint.
REINFORCING: All reinforcing shall conform to ASTM A615, Grade 60. All dimensions relative to reinforcing steel shall be to centerline of bar unless otherwise noted.
EXCAVATION: Excavation for culverts less than bridge length shall not be paid for directly but shall be subsidiary to Class AAA Concrete. Excavation for RCB Bridges shall be paid for as Class III Excavation.
SEAL COURSE: A Seal Course may be required by the Engineer. The Seal Course shall be unreinforced Concrete (Commercial Grade) to a minimum depth of 3 inches or as determined by the Engineer. Concrete for the seal course shall be paid for at the unit price of Class AAA Concrete.
FOUNDATION STABILIZATION: Foundation Stabilization may be required as directed by the Engineer. The depth of Foundation Stabilization shall be determined by the Engineer. Foundation Stabilization shall be paid for at the determined Unit Price set for Foundation Stabilization. See Auxiliary Details.
QUANTITIES: The quantities shown in the Culvert Summary include apron and/or soil saver quantities when their construction is required by the plans. Payment for additional quantities that result from including seal course and/or floating apron, as a change in original plans, shall be made at the Unit Price bid for the various items involved.



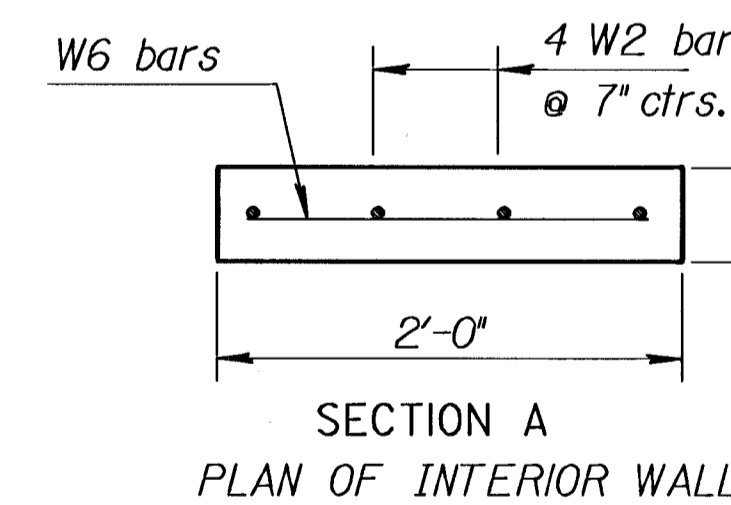
SHOWING CONCRETE

PLAN

SHOWING REINFORCING



MANHOLE OPENING DETAIL



SECTION A
PLAN OF INTERIOR WALL

CULVERT SUMMARY

Flow Line Elev.	Crown Gr. Elev.	Design Fill Ht.	Skew	Wings	Scour Apron	Soil Saver	Granular Backfill	Concrete			Reinf. Steel (Gr. 60)		
								Barrel (Cu.Yds.)	Wings (Cu.Yds.)	Total (Cu.Yds.)	Barrel (Lbs.)	Wings (Lbs.)	Total (Lbs.)
1279.48	1286.24	2	0		NO	NO	NO	64.80		64.80	15,630		15,340
1279.40													

BAR SCHEDULE

F1				F3				F4				S1				S3				S4				S5								
Size	Spa.	No.	Length	Size	Spa.	No.	Length	Size	Spa.	No.	Length	Size	Spa.	No.	Length	Size	Spa.	No.	Length	Size	Spa.	No.	Length	Size	Spa.	No.	Length	Size	Spa.	No.	Length	
6	6"	77	21'-9"	-	-	-	-	6	6"	77	21'-9"	5	54	37'-10"	6	6"	77	21'-9"	-	-	-	-	6	6"	77	21'-9"	5	24	37'-10"	5	24	37'-10"

H1				H2				W1				W2				W3				W4				W5				W6			
Size	Spa.	No.	Length	Size	Spa.	No.	Length	Size	Spa.	No.	Length	Size	Spa.	No.	Length	Size	Spa.	No.	Length	Size	Spa.	No.	Length	Size	Spa.	No.	Length	Size	Spa.	No.	Length
5	-	8	5'-8"	5	-	8	4'-0"	5	12"	102	5'-5"	6	7"	32	5'-5"	5	8	38'-1"	5	12"	4	26'-0"	5	12"	8	21'-9"	5	12"	12	1'-9"	

Minimum Splice Lengths	
#4	1'-4"
#5	1'-8"
#6	2'-0"

* Class III Excavation Subsidiary to Class AAA Concrete

SUMMARY OF QUANTITIES		
Class AAA Concrete	64.8	C.Y.
Class AAA Concrete (AE)		C.Y.
Class III Excavation *	2.08	C.Y.
Reinforcing Steel (Gr. 60)	15,630	Lbs.
Reinforcing Steel (Epoxy Coated)		Lbs.
Foundation Stabilization (Set)	1	C.Y.
Granular Backfill (Wingwalls) (Set)	1	C.Y.

KANSAS DEPARTMENT OF TRANSPORTATION	
Sta. 94+54.36	
DOUBLE 10'x4' RCB	
PROJECT NO. 87N 0064-01 SEDGWICK CO.	
MID-KANSAS ENGINEERING CONSULTANTS, INC.	
WICHITA, KANSAS	
DESIGNED BY: KJS	CHECKED BY: PAF
DRAWN BY: WNU	DATE: 1/97