

FHWA REGION NO.	STATE	PROJECT NO.	YEAR	SHEET NO.	TOTAL SHEETS
7	KANSAS	8TN 0064-01	1997	45	130

TYPICAL SECTION

Reference is made to the latest edition of the CRSI "Manual of Standard Practice" for recommended industry practices concerning reinforcing steel.

Use only the following types of bar supports:

- 1) Wire Bar Supports:
 - a) Epoxy coated reinforcing: Class 1 Protection
 - b) Non-epoxy coated reinforcing: Class 1, 2, or 3 Protection
- 2) Plastic Bar Supports
- 3) Supplementary bars

When securing epoxy coated reinforcement, use tie wires or metal clips that are epoxy or plastic coated.

Do not weld reinforcing steel to bar supports or to other reinforcing steel. Shop weld spacer frames for haunched slabs.

Tie bars at all intersections around the perimeter of each mat and at not less than 2'-0" centers or at every intersection, whichever is greater.

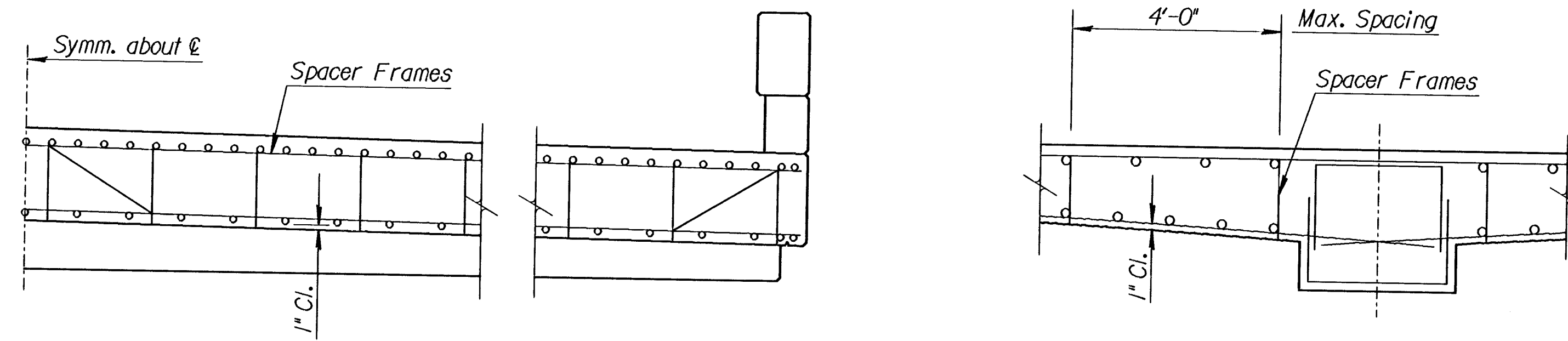
Where more than one length of bar support is required, lap the end legs so they are locked or tied together.

Use proper height supports to maintain the distance between the reinforcing and the formed surface or the top surface of deck slabs within 1/4" of that indicated on the plans.

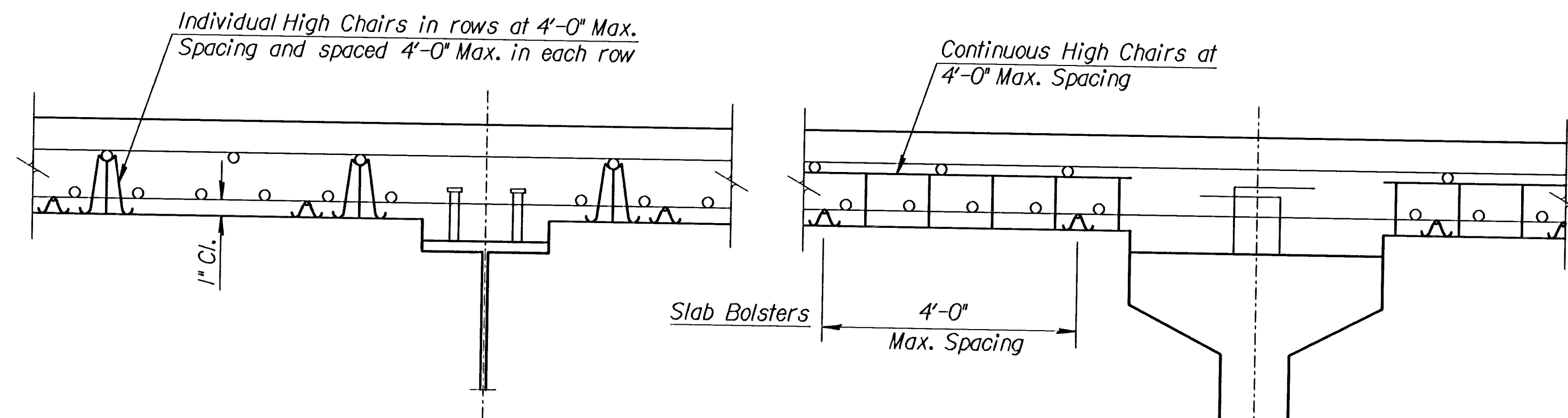
Spacings shown are maximums. Use sufficient supports, as determined by the Engineer, to retain the reinforcing steel in position.

Construct any platforms, required for the support of workers and/or equipment during concrete placement, directly on the forms and not on the reinforcing steel.

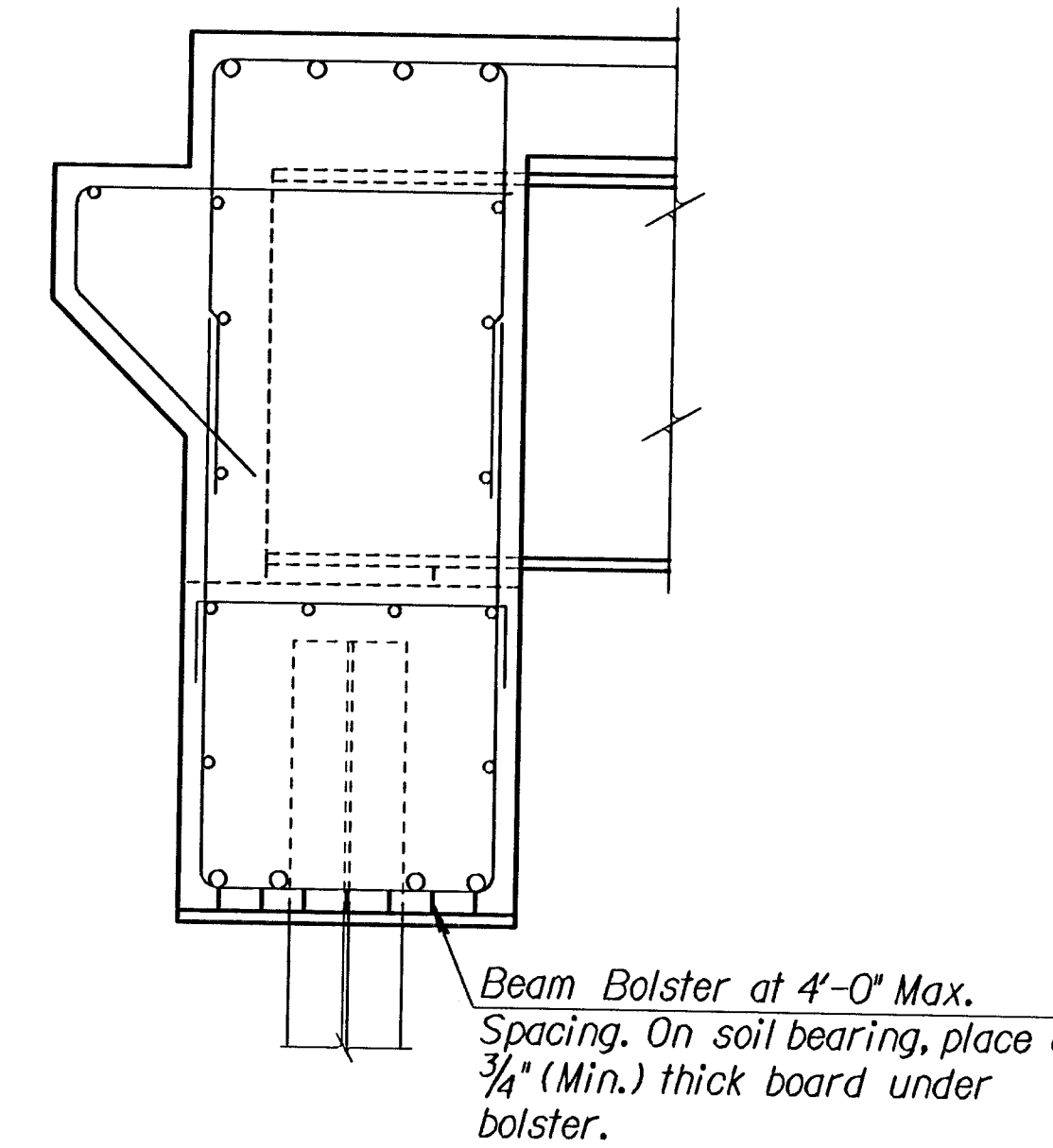
Designs and arrangements of Supports or Spacers other than as shown on this sheet, may be used with the permission of the Engineer.



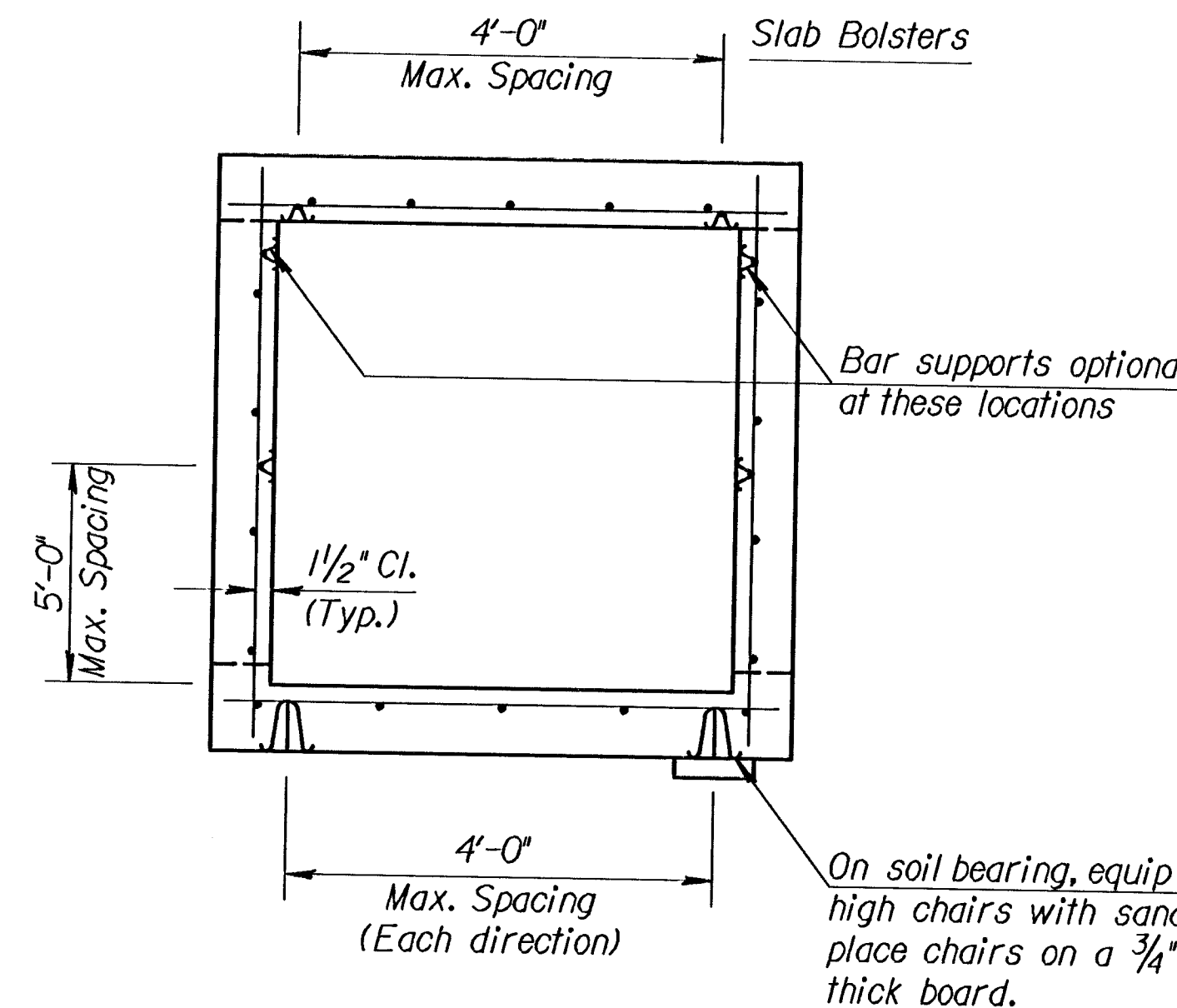
CONTINUOUS HAUNCHED SLAB



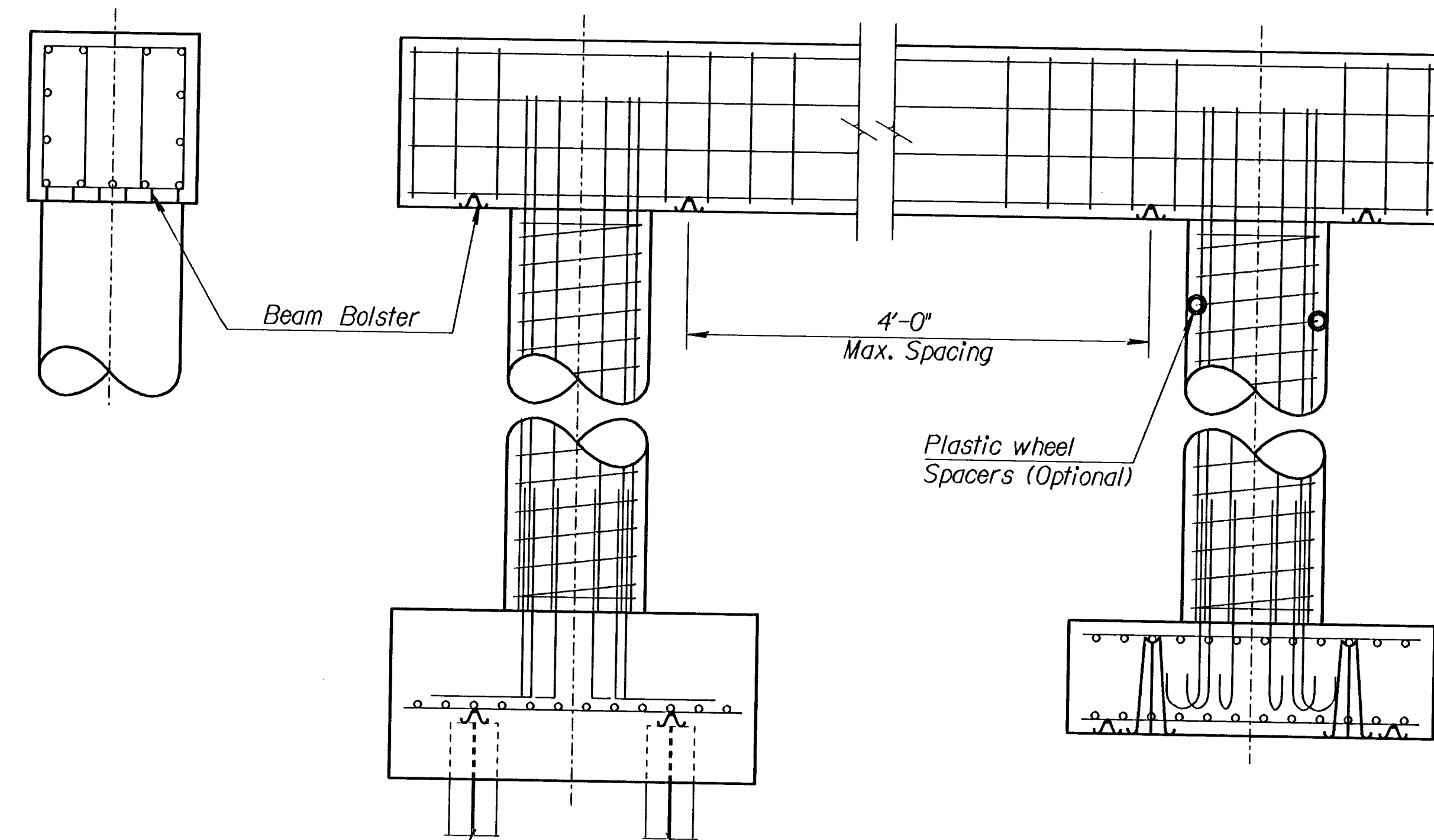
DECK GIRDERS



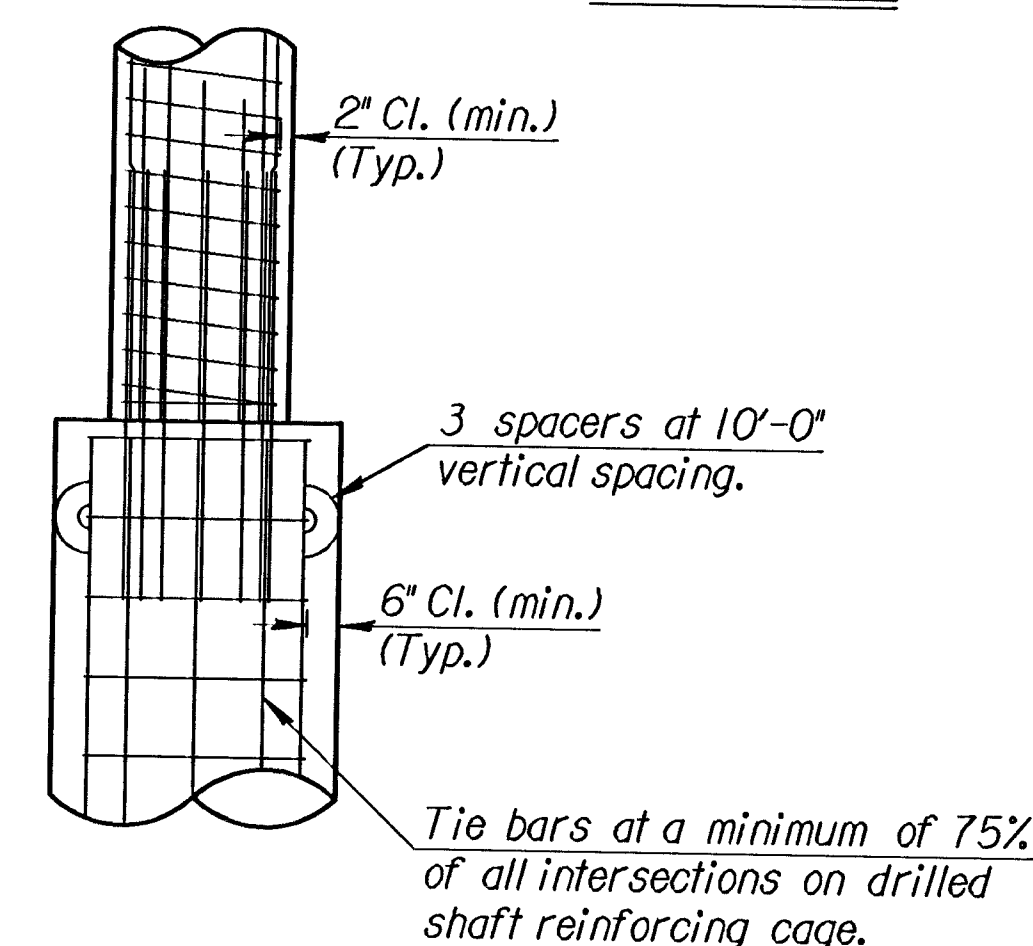
ABUTMENT



BOX CULVERT



PIER



DRILLED SHAFT

3					
2					
1					
NO.	DATE	REVISIONS	BY	APP'D	

KANSAS DEPARTMENT OF TRANSPORTATION

-----**SUPPORTS AND SPACERS**-----
 FOR
 -----**REINFORCING STEEL**-----

BRI20

FHWA APPROVAL	6-15-95	APP'D	KENNETH F. HURST
DESIGNED	RAM	DETAILED	GK
DESIGN CK.	LRB	DETAIL CK.	RAM
		QUANTITIES	GK
		CADD	GK
		ICADD	RAM

Plotted By : \$USERNAME\$\$
 Plot File : \$\$\$\$\$\$\$\$\$\$DISPEC\$
 Plot Date : \$\$\$\$\$\$STIME\$\$\$\$\$\$
 Std. Base File : /usr2/stand/lsr/dt/20.dgn
 Working File : /usr2/
 Back Up File : /litch
 View = PLOT