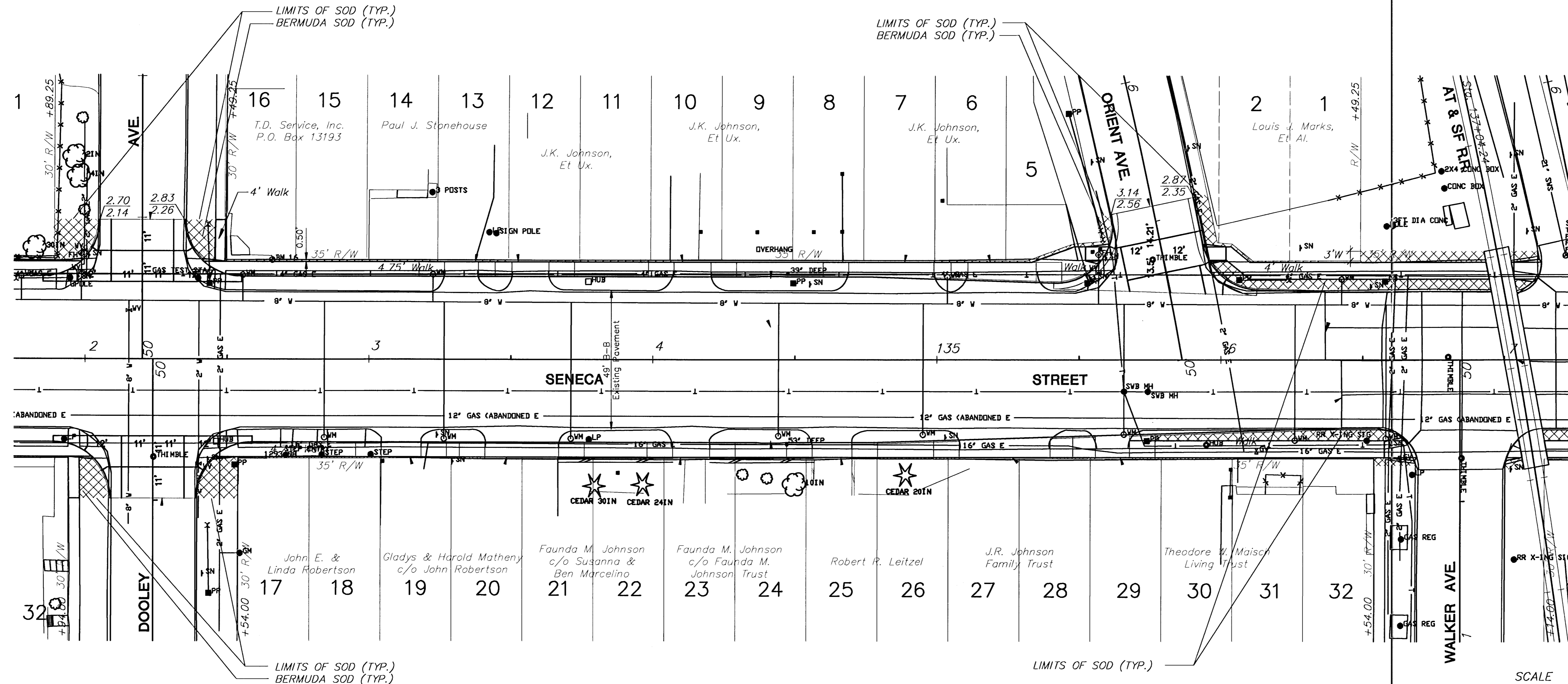


FHWA REG NO.	STATE	PROJECT NO.	YEAR	SHEET NO.	SHEETS
7	KANSAS	87N 0064-01	1997	74	130



PER-SHEET LANDSCAPE BID QUANTITIES

QTY.	BOTANICAL NAME	COMMON NAME	SIZE	ROOT
NO PLANT MATERIAL THIS SHEET				

Bm #16 "L" cut in SE cor. brick column @ NW cor. Dooley and Seneca. Sta. 132+65.95
33.16' Lt. Elev.=1293.32

UTILITY OWNERS

- W - City of Wichita Water & Sewer Department (316)268-4908
- T - Southwestern Bell Telephone Co. 1-571-2115
- E - Kansas Gas and Electric (316)832-3169 or 832-3180
- CATV - Multimedia Cablevision (316)262-4270
- SS - City of Wichita Water & Sewer Department (316)268-4908
- SWS - City of Wichita Water & Sewer Department (316)268-4908

SCALE



PLAN: Lat. & Long.
PROFILE: Horiz. same as above
VERT. 0'

KANSAS DEPARTMENT OF TRANSPORTATION
SOUTH SENECA STREET
132+00 To 137+00
LANDSCAPE PLAN

PROJECT NO. 87N 0064-01 SEDGWICK CO.
MID-KANSAS ENGINEERING CONSULTANTS, INC.
WICHITA, KANSAS

DESIGNED BY: DJA/WDM	CHECKED BY: LME/WDM
DRAWN BY: DJA/WDM	DATE: 2/97 SHEET 74 OF 130

S4005E20
74