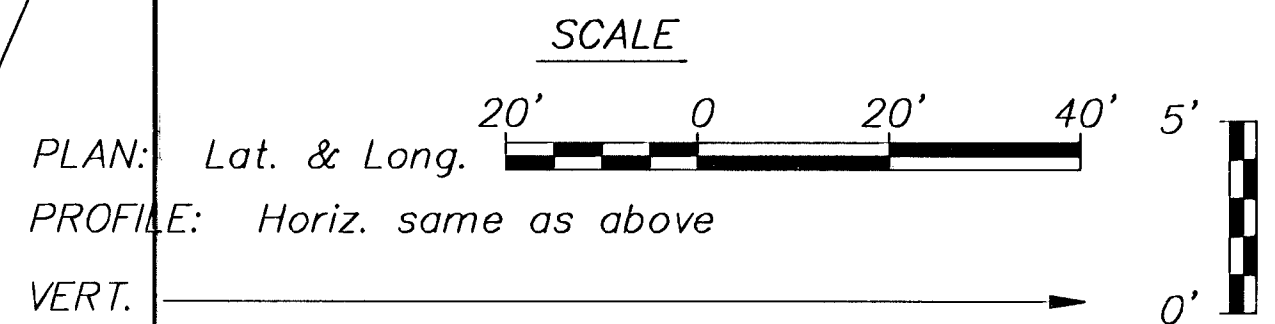
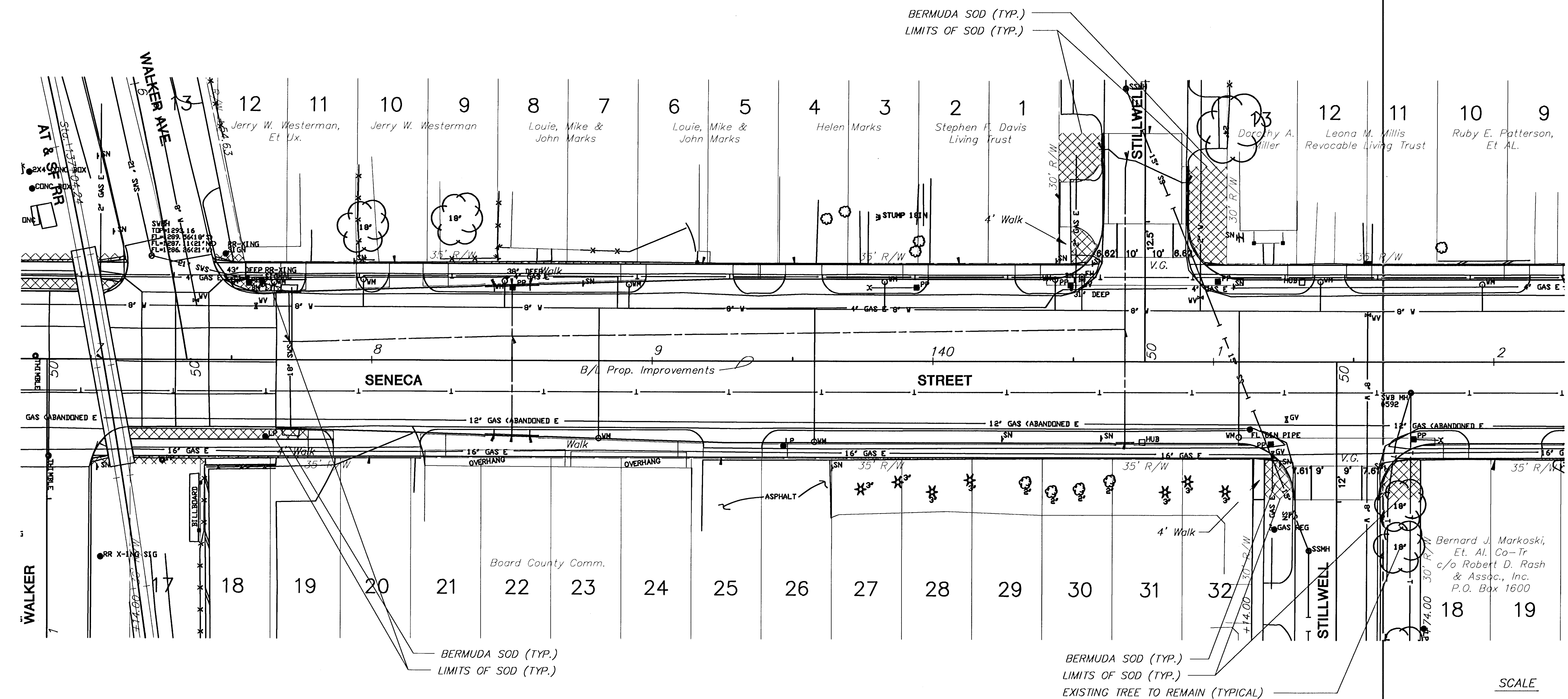


FHWA REG NO.	STATE	PROJECT NO.	YEAR	SHEET NO.	SHEETS
7	KANSAS	87N 0064-01	1997	75	130



PER-SHEET LANDSCAPE BID QUANTITIES

QTY.	BOTANICAL NAME	COMMON NAME	SIZE	ROOT
NO PLANT MATERIAL THIS SHEET				

UTILITY OWNERS

- W - City of Wichita Water & Sewer Department (316)268-4908
- T - Southwestern Bell Telephone Co. 1-571-2115
- E - Kansas Gas and Electric (316)832-3169 or 832-3180
- CATV - Multimedia Cablevision (316)262-4270
- SS - City of Wichita Water & Sewer Department (316)268-4908
- SWS - City of Wichita Water & Sewer Department (316)268-4908

BM #17 "L" cut in R.R. sign conc. base @ NW cor. Walker and Seneca. Sta. 137+61.04  
26.95' Lt. Elev.=1294.13

KANSAS DEPARTMENT OF TRANSPORTATION

**SOUTH SENECA STREET**  
137+00 TO 142+00  
**LANDSCAPE PLANS**

PROJECT NO. 87N 0064-01 SEDGWICK CO.

MID-KANSAS ENGINEERING CONSULTANTS, INC.  
WICHITA, KANSAS

DESIGNED BY: DJA/MDM	CHECKED BY: LME/MDM
DRAWN BY: DJA/MDM	DATE: 2/97 SHEET 75 OF 130

94005E21