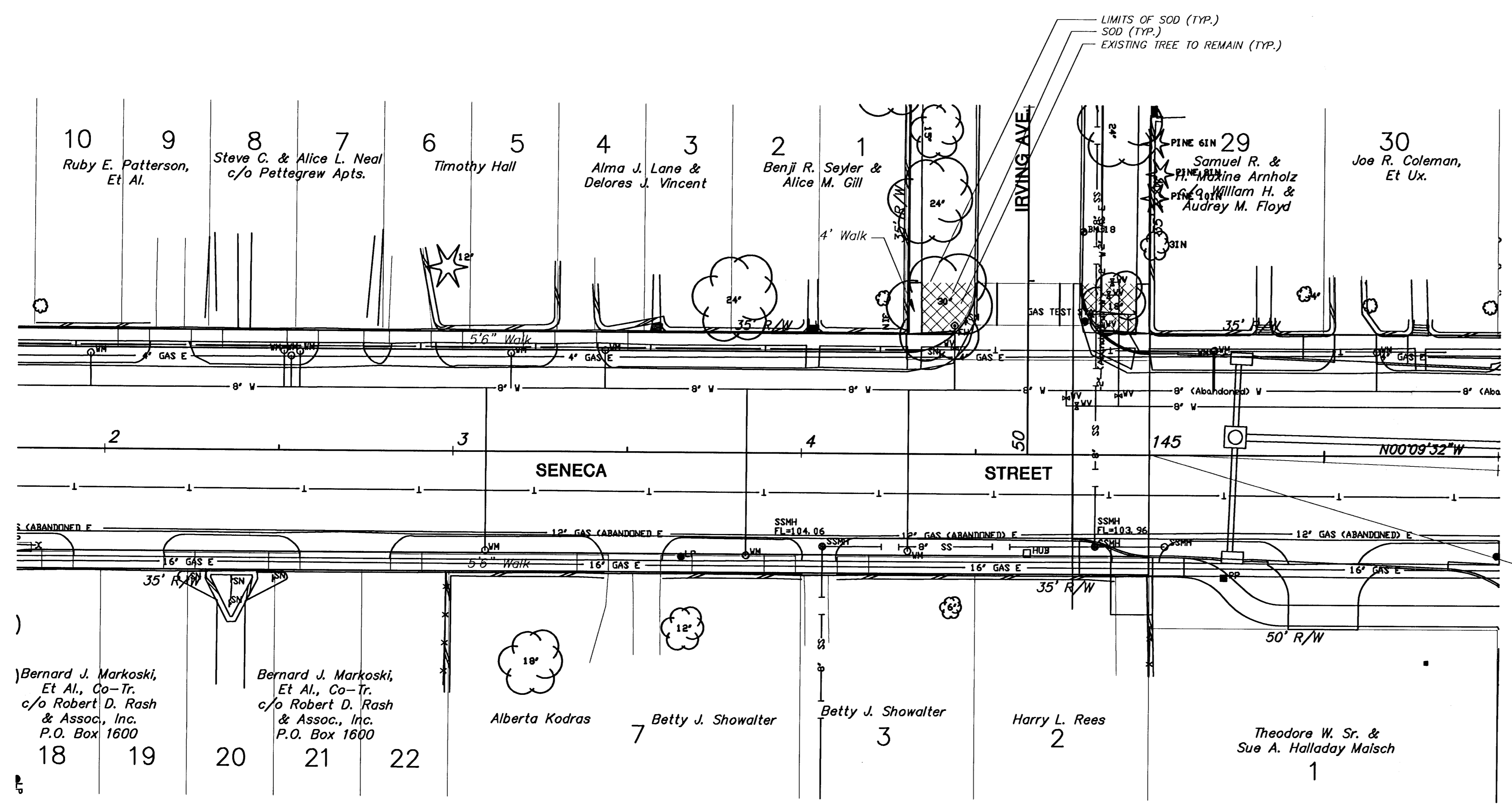
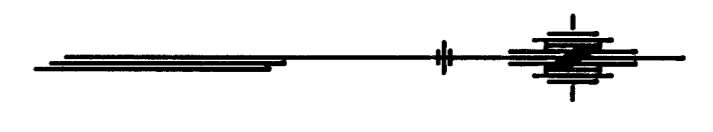


FHWA REG. NO.	STATE	PROJECT NO.	YEAR	SHEET NO.	SHEETS
7	KANSAS	87N-0064-01	1997	76	130



SUMMARY OF LANDSCAPE BID QUANTITIES

QTY.	BOTANICAL NAME	COMMON NAME	SIZE	ROOT
39	CLEDITSIA TRIACANTHOS VAR. INERMIS CV. IMPERIAL	IMPERIAL HONEYLOCUST	2" CAL.	B&B
22	KOELREUTERIA PANICULATA	GOLDENRAIN TREE	2" CAL.	B&B
30	MALUS CV. SNOW DRIFT	SNOW DRIFT CRABAPPLE	2" CAL.	B&B
19	PISTACIA CHINENSIS	CHINESE PISTACHE	2" CAL.	B&B

Bernard J. Markoski, Et Al., Co-Tr. c/o Robert D. Rash & Assoc., Inc. P.O. Box 1600

Bernard J. Markoski, Et Al., Co-Tr. c/o Robert D. Rash & Assoc., Inc. P.O. Box 1600

Alberta Kodras

Betty J. Showalter

Betty J. Showalter

Harry L. Rees

Theodore W. Sr. & Sue A. Halladay Maisch

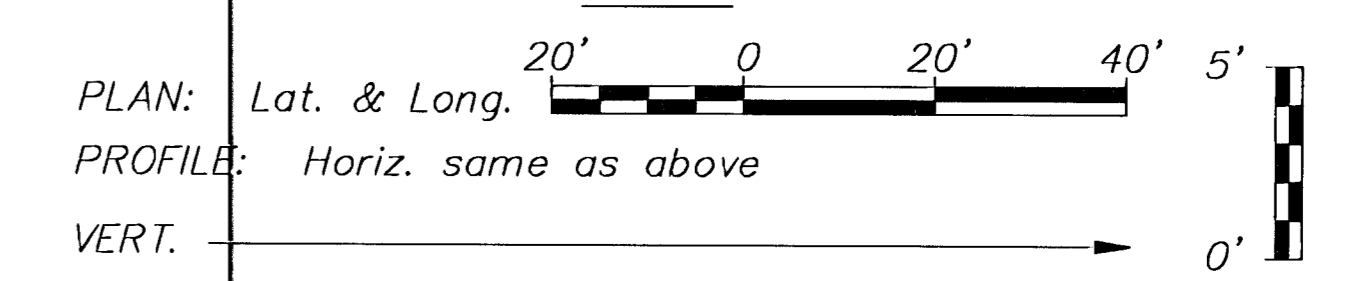
PER-SHEET LANDSCAPE BID QUANTITIES

QTY.	BOTANICAL NAME	COMMON NAME	SIZE	ROOT
NO PLANT MATERIAL THIS SHEET				

UTILITY OWNERS

- W - City of Wichita Water & Sewer Department (316)268-4908
- T - Southwestern Bell Telephone Co. 1-571-2115
- E - Kansas Gas and Electric (316)832-3169 or 832-3180
- G - Peoples Natural Gas Co. (316)946-0096
- CATV - Multimedia Cablevision (316)262-4270
- SS - City of Wichita Water & Sewer Department (316)268-4908
- SWS - City of Wichita Water & Sewer Department (316)268-4908

SCALE



KANSAS DEPARTMENT OF TRANSPORTATION  
**SOUTH SENECA STREET**  
**142+00 TO 144+99.78**  
**LANDSCAPE PLAN**

PROJECT NO. 87N-0064-01 SEDGWICK CO.  
MID-KANSAS ENGINEERING CONSULTANTS, INC.  
WICHITA, KANSAS

DESIGNED BY: DJA/WDM	CHECKED BY: LME/WDM
DRAWN BY: DJA/WDM	DATE: 2/97 SHEET 76 OF 130

94005E22