

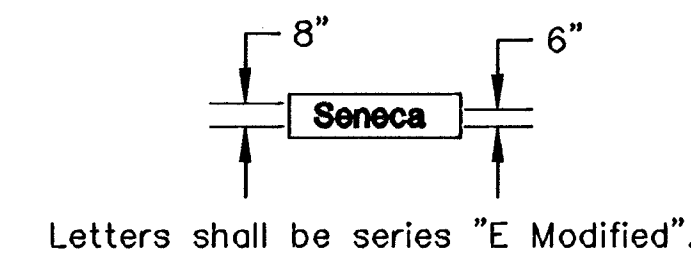
FHWA REG NO.	STATE	PROJECT NO.	YEAR	SHEET NO.	SHEETS
7	KANSAS	87N 0064-01	1997	78	130

BILL OF MATERIALS (FOR INFORMATION ONLY)		
ITEM	UNIT	QUANTITY
TRAFFIC SIGNAL POLE STEEL W/MASTARM	EACH	4
CONCRETE CONTROLLER PAD	EACH	1
CONCRETE FOOTING - POLE	EACH	4
BACK PLATE 5" 3 SECTION	EACH	5
BACK PLATE 5" 5 SECTION	EACH	3
SERVICE BOX - 36 IN. DIA.	EACH	4
JUNCTION BOX - 24 IN. DIA.	EACH	4
GROUND ROD & CLAMP	EACH	6
CONDUIT CLAMP	EACH	AS REQUIRED
TRAFFIC SIGNAL LAMP 135 WATT	EACH	58
ENTRANCE HEAD	EACH	1
CIRCUIT BREAKER & BOX	EACH	1
TRAFFIC SIGNAL HEAD - 12" (TYPE A) W/MOUNTING BRACKET	EACH	9
TRAFFIC SIGNAL HEAD - 12" (TYPE I) W/MOUNTING BRACKET	EACH	3
PEDESTRIAN SIGNAL - 12" (TYPE L) W/MOUNTING BRACKET	EACH	8
PEDESTRIAN PUSHBUTTON W/SIGN	EACH	8
PAD MOUNTED CABINET & CONTROLLER SYSTEM-TYPE 170(SEE NOTE)	EACH	1
LEAD-IN WIRE NO. 8 AWG 1/c (TYPE THHN)	LIN. FT.	50
DETECTOR LOOP WIRE NO. 14, AWG 1/c (TYPE THHN)	LIN. FT.	3375
MULTI-CONDUCTOR CABLE NO. 14 AWG 5/c	LIN. FT.	270
MULTI-CONDUCTOR CABLE NO. 14 AWG 7/c	LIN. FT.	1150
SHIELDED DETECTOR LEAD-IN NO. 14 AWG 2/C	LIN. FT.	2280
6 PR. #19 COMMUNICATION CABLE	LIN. FT.	—
CONDUIT 3/4"	LIN. FT.	475
CONDUIT 1"	LIN. FT.	25
CONDUIT 1-1/4"	LIN. FT.	310
CONDUIT 2"	LIN. FT.	50
CONDUIT 3"	LIN. FT.	385
STANDARD 1C #8 (GROUND)	LIN. FT.	535
STREET NAME SIGNS	EACH	4
LEFT TURN YIELD ON GREEN W/MOUNTING HARDWARE (R10-12)	EACH	3

TRAFFIC SIGNAL POLE SUMMARY							
STATION	TYPE	ARM LENGTH	SIGNALS ON ARM	X1	X2	OTHER EQUIP. ON ARM	SIGNALS ON POLE
123+26 R	A	36'	3-D	8	11	C, F	1-D 2-E
123+27.50 L	A	25'	1-D			F	1-D 2-E
123+85 L	A	18'	1-D			C, F	1-D 2-E
123+97.50 R	A	35'	3-D	8	11	C, F	1-D 2-E

- A JOINT USE STEEL POLE WITH MAST ARM
- B STANDARD STEEL POLE WITH MAST ARM
- C PROTECTED TURN SIGN
- D TRAFFIC SIGNAL
- E PEDESTRIAN SIGNAL WITH PUSH BUTTON
- F STREET NAME SIGN

STREET NAME SIGN SUMMARY	
LEGEND	QUANTITY
Seneca	2
Harry	2
TOTAL	4



TYPE 170 TRAFFIC CONTROLLER SYSTEM TO INCLUDE:

ONE (1) MODEL 170 CONTROLLER UNIT COMPLETE WITH 412B2 SYSTEM MEMORY MODULE CAPABLE OF SUPPORTING WAPITI MICRO SYSTEM W4IKS (LATEST REVISION) TRAFFIC PROGRAM ON 27256 EPROM.

ONE (1) MODEL 332 CABINET COMPLETE WITH ALL ACCESSORIES INCLUDING FOUR (4) MODEL 430 TRANSFER RELAYS, TWO (2) MODEL 204 FLASHER UNITS AND ONE (1) MODEL 210PC CONFLICT MONITOR.

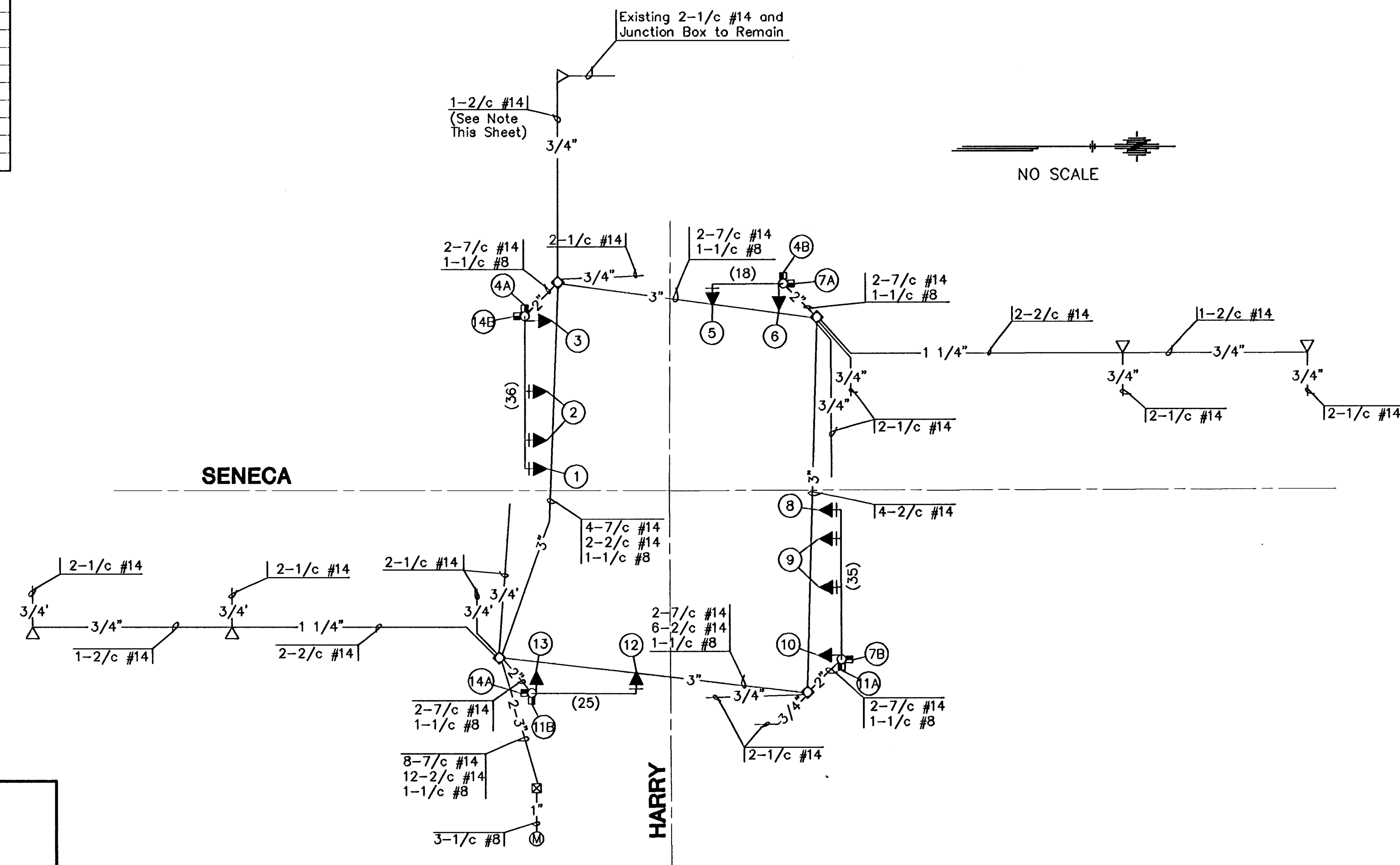
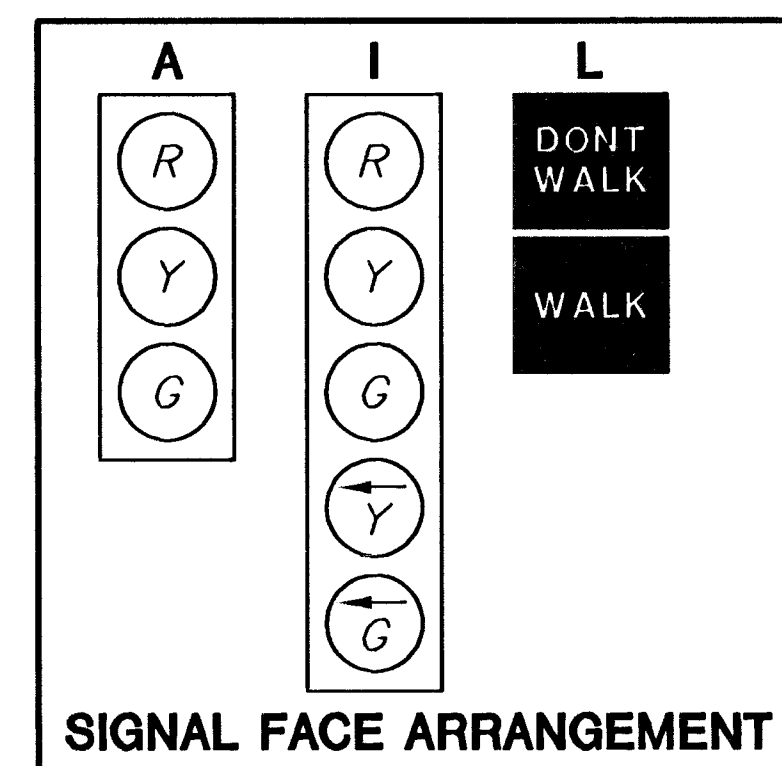
THREE (3) MODEL 242 TWO CHANNEL ISOLATORS.

TEN (10) MODEL 222 TWO CHANNEL LOOP DETECTOR SENSOR UNITS.

ELEVEN (11) MODEL 200 SWITCH PACKS.

NOTE: THE CONTRACTOR SHALL SUPPLY AND INSTALL ALL NECESSARY MATERIAL AND EQUIPMENT FOR THE COMPLETE INSTALLATION AND OPERATION OF THE TRAFFIC SIGNAL WHETHER SPECIFICALLY MENTIONED OR NOT.

TRAFFIC SIGNAL HEAD SUMMARY				
SIGNAL NO.	TYPE	SIZE	MOUNTING BRACKET	QUANTITY
1	I	5-12"	TYPE I	1
2	A	3-12"	TYPE I	2
3	A	3-12"	TYPE III	1
4	L	2-12"	TYPE II	2
5	I	5-12"	TYPE I	1
6	A	3-12"	TYPE III	1
7	L	2-12"	TYPE II	2
8	I	5-12"	TYPE I	1
9	A	3-12"	TYPE I	2
10	A	3-12"	TYPE III	1
11	L	2-12"	TYPE II	2
12	A	3-12"	TYPE I	1
13	A	3-12"	TYPE III	1
14	L	2-12"	TYPE II	2



CONDUIT AND WIRING DIAGRAM

NOTE: REMOVE EXISTING 1-2/C #14 BETWEEN JUNCTION BOX AND CONTROLLER. CUT AND REMOVE EXISTING CONDUIT IN AREA OF CONSTRUCTION. REPLACE WITH SAME NEW CONDUIT. CONNECT AND INSTALL NEW 1-2/C #14 FROM JUNCTION BOX TO NEW CONTROLLER.

RECAPITULATION OF TRAFFIC SIGNAL QUANTITIES			
BID ITEM	QUANTITY	UNIT	
TRAFFIC SIGNAL INSTALLATION (SENECA & HARRY)	LUMP SUM	L.S.	

KANSAS DEPARTMENT OF TRANSPORTATION

SENECA STREET AND HARRY STREET TRAFFIC SIGNAL SUMMARY

PROJECT NO. 87N 0064-01 SEDGWICK CO.

MID-KANSAS ENGINEERING CONSULTANTS, INC.
WICHITA, KANSAS

DESIGNED BY: DGH CHECKED BY: DGH
DRAWN BY: WJW DATE: NOV. 1995 SHEET 78 OF 130

84055G1A

H:\CIVIL\SENECA\84055G1A.DWG (1/24/95) 13:37:06 1997