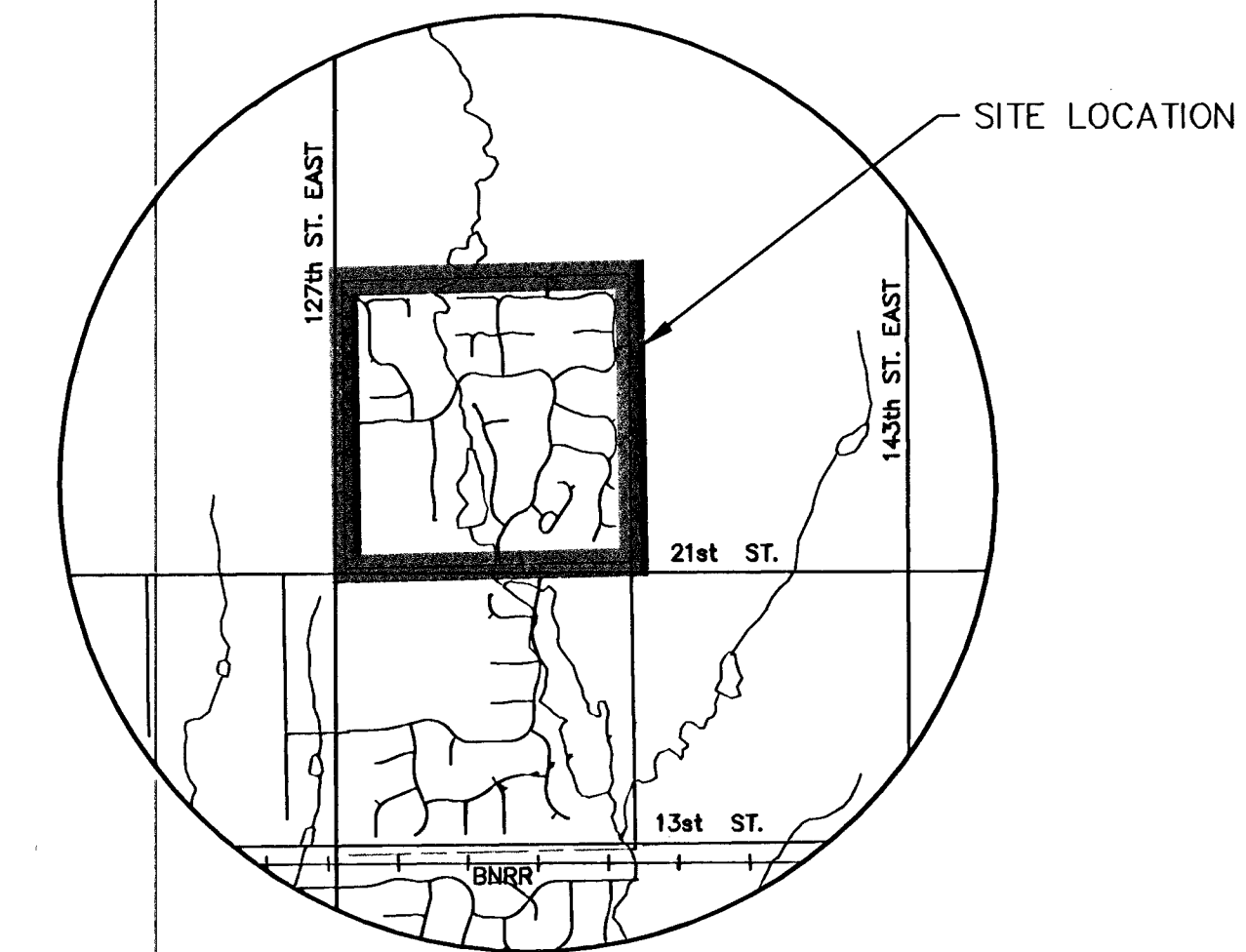


# PAVING STREETS AND INCIDENTAL DRAINAGE IN HAWTHORNE THIRD ADDITION

AN ADDITION TO THE CITY OF WICHITA  
SEDGWICK COUNTY, KANSAS

PHASE 2  
PROJECT NO. 472-84082

JIM ARMOUR, P.E., CITY ENGINEER  
OCA 765960



LOCATION MAP

## GENERAL NOTES

- UNLESS SHOWN OR STATED OTHERWISE ON THESE DRAWINGS, MATERIALS AND CONSTRUCTION SHALL BE IN ACCORDANCE WITH CITY OF WICHITA CONCRETE PAVEMENT AND ASPHALTIC CONCRETE PAVEMENT SPECIFICATIONS.
- THE CONTRACTOR SHALL BE RESPONSIBLE FOR PRESERVING PROPERTY IRONS. THE CONTRACTOR WILL BE REQUIRED TO RE-ESTABLISH ANY PROPERTY IRONS WHICH ARE DAMAGED OR DESTROYED BY HIS CONSTRUCTION OPERATIONS. SUCH IRONS SHALL BE RE-ESTABLISHED BY A LICENSED LAND SURVEYOR IN ACCORDANCE WITH STATE LAWS.
- TRANSITION CURB FROM FULL HEIGHT COMBINATION CURB AND GUTTER TO ROLL TYPE COMBINATION CURB AND GUTTER IS TO BE PAID AS BID FOR LINEAL FEET COMBINED CURB AND GUTTER (3 5/8" ROLL).
- EXISTING UTILITIES AND THEIR LOCATIONS, AS SHOWN ON THE PLANS REPRESENT THE BEST INFORMATION OBTAINABLE FOR DESIGN. LOCATION INFORMATION HAS BEEN OBTAINED FROM THE VARIOUS UTILITY COMPANIES AND IS EITHER FROM COMPANY RECORD DRAWINGS OR COMPANY PROVIDED FIELD LOCATIONS. THE PLAN LOCATIONS SHOWN ARE NOT GUARANTEED. ADDITIONAL EXISTING UTILITIES MAY ALSO BE ENCOUNTERED.

CONTRACTOR WILL BE REQUIRED TO PROVIDE A MINIMUM ADVANCE NOTICE OF FORTY-EIGHT (48) HOURS TO UTILITY COMPANIES PRIOR TO STARTING ANY EXCAVATION AS FOLLOWS:

KANSAS ONE-CALL 1-800-344-7233  
OR 687-2470 (LOCAL WICHITA)

THE CONTRACTOR MUST NOTIFY THE FOLLOWING IN CASE OF AN EMERGENCY:

|                                      |              |
|--------------------------------------|--------------|
| SBC (TELEPHONE)                      | 800-870-8390 |
| COX COMMUNICATIONS (CABLE)           | 262-0661     |
| WESTAR (ELECTRIC)                    | 383-8600     |
| KANSAS GAS SERVICE (GAS)             | 832-3101     |
| CITY OF WICHITA WATER & SEWER MAINT. | 262-6000     |
| AQUILA (GAS)                         | 946-0096     |
| KANEB PIPELINE                       | 773-9000     |

- RUBBLE FROM THE REMOVAL OF MISCELLANEOUS STRUCTURES AND EXCESS EXCAVATION WHICH IS TO BE WASTED SHALL BE DISPOSED OF ON SITES TO BE PROVIDED BY THE CONTRACTOR. THESE SITES SHALL BE APPROVED BY THE ENGINEER AS TO SUITABILITY, APPEARANCE AND SITE LOCATION. LOCATIONS THAT, IN THE OPINION OF THE ENGINEER, WILL LEAVE AN UNSIGHTLY APPEARANCE WILL NOT BE APPROVED. ALL DISPOSAL SITES MUST BE APPROVED BY THE KANSAS DEPARTMENT OF HEALTH AND ENVIRONMENT. MATERIAL EITHER STOCKPILED OR DISPOSED OF IN A FLOOD PLAIN WOULD REQUIRE A KANSAS STATE BOARD OF AGRICULTURE PERMIT. ANY MATERIAL DUMPED IN WATERS OF THE UNITED STATES OR WETLANDS IS SUBJECT TO U.S. CORPS OF ENGINEERS PERMITTING REGULATIONS. ANY MATERIAL BURIED OR STOCKPILED BEYOND APPROVED CONSTRUCTION LIMITS WOULD REQUIRE ADDITIONAL ARCHAEOLOGICAL INVESTIGATIONS UNLESS BURIED IN A PREVIOUSLY APPROVED BORROW LOCATION.

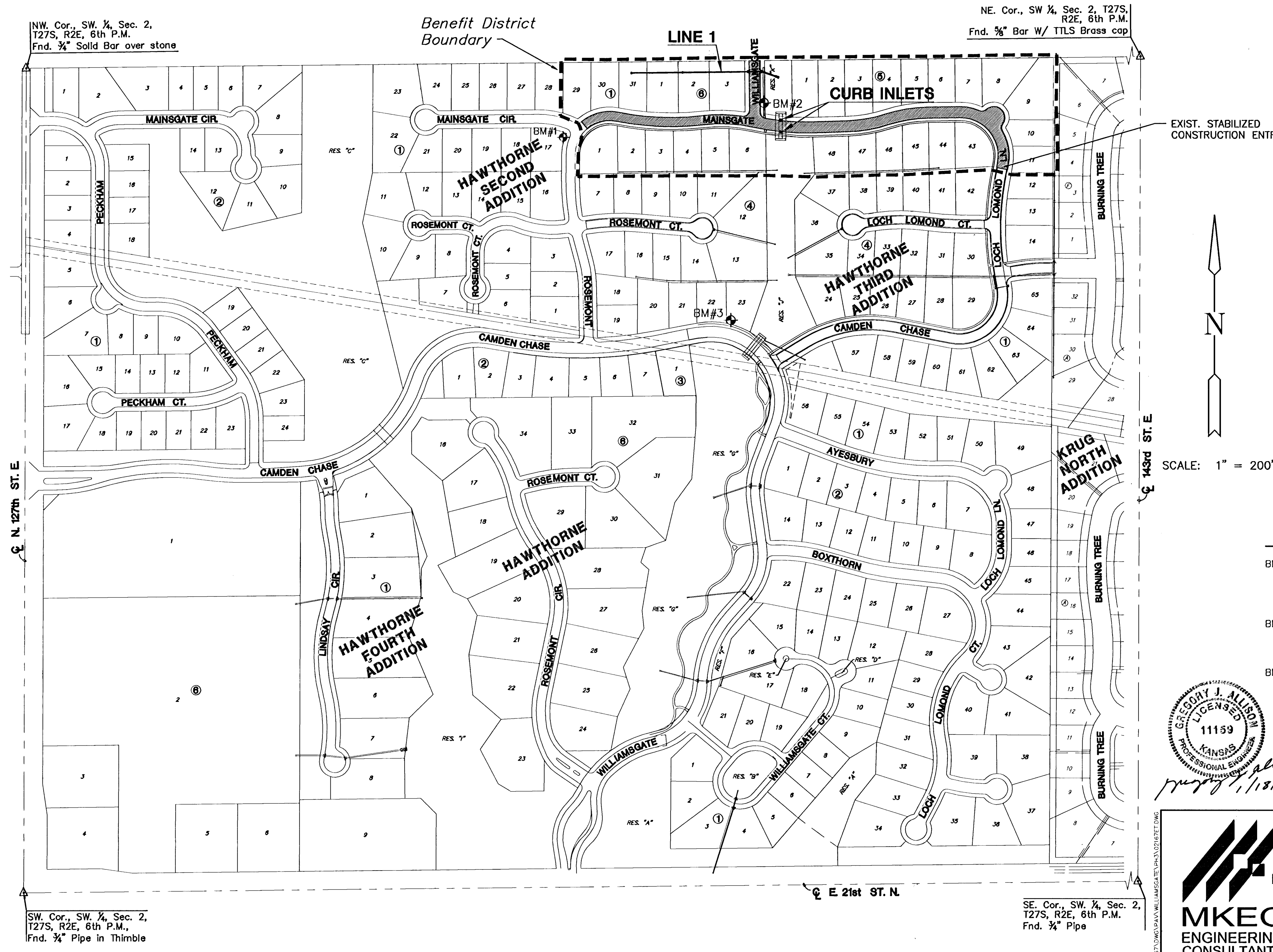
- A SAW CUT OF AT LEAST ONE-HALF THE DEPTH OF THE EXISTING SURFACE COURSES OR ONE-FOURTH THE DEPTH OF THE EXISTING TOTAL PAVEMENT THICKNESS SHALL BE PROVIDED AT LOCATIONS WHERE PROPOSED CONSTRUCTION ABUTS AN EXISTING SURFACE OR PAVEMENT FOR WHICH PARTIAL REMOVAL OF THAT SURFACE OR PAVEMENT IS REQUIRED. SAW JOINT TO FACILITATE REMOVAL WITHIN THREE (3) FEET OF EXISTING JOINTS WILL NOT BE PERMITTED AND FOR SUCH INSTANCES THE LIMITS OF REMOVAL SHALL EXTEND TO THE EXISTING JOINT. SUCH SAW CUTS WILL NOT BE PAID FOR DIRECTLY AND THIS COST SHALL BE CONSIDERED AS SUBSIDIARY TO THE REMOVAL OF SURFACE OR PAVEMENT.

- ALL AREAS DISTURBED SHALL BE SEEDED AS FOLLOWS:  
K-31 FESCUE AT A RATE OF 300 LBS/ACRE.

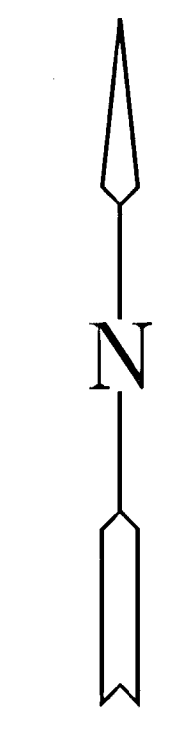
- ANY TREE THAT MUST HAVE BRANCHES REMOVED SHALL BE TRIMMED WITH A SHARP INSTRUMENT/TOOL THAT IS INTENDED FOR SUCH OPERATIONS. GAIN APPROVAL FROM MKEC BEFORE REMOVING BRANCHES FROM ANY TREE. KNOCKING BRANCHES OFF WITH A BACKHOE OR OTHER SIMILAR MACHINES IS NOT ACCEPTABLE!

- TREES AND SHRUBS IN PUBLIC RIGHT-OF-WAY WHICH ARE IN DIRECT CONFLICT WITH PROPOSED NEW CONSTRUCTION SHALL BE REMOVED BY THE CONTRACTOR WITH THE ENGINEER'S APPROVAL. TREES AND SHRUBS WHICH ARE NOT IN DIRECT CONFLICT WITH PROPOSED NEW CONSTRUCTION SHALL BE SAVED AND PROTECTED FROM DAMAGE.

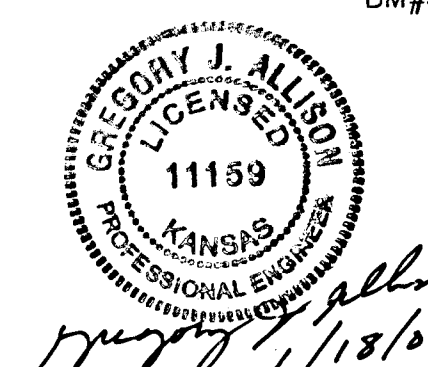
| LENGTH OF PROJECT  |           |
|--------------------|-----------|
| MAINSGATE          | 1243 FT.  |
| WILLIAMSGATE       | 427 FT.   |
| EARTHWORK SUMMARY  |           |
| EXCAVATION         | 330 C.Y.  |
| CONTRACTOR FURNISH | 1900 C.Y. |
| LOOSE FILL         | 1750 C.Y. |
| COMP. FILL         | 400 C.Y.  |
| EASEMENT GRADING   |           |
| EXCAVATION         | 320 C.Y.  |
| COMP. FILL         | 400 C.Y.  |



EXIST. STABILIZED CONSTRUCTION ENTRANCE



SCALE: 1" = 200'



## INDEX TO DRAWINGS

| SHEET NO. | DESCRIPTION           |
|-----------|-----------------------|
| 1         | TITLE SHEET           |
| 2-6       | PAVING DETAILS        |
| 7         | SIGNING DETAILS       |
| 8-11      | PAVING PLANS          |
| 12-13     | SWS DETAILS           |
| 14        | SWS PLAN              |
| 15        | EASEMENT GRADING PLAN |
| 16-20     | BMP DETAILS           |
| 21-26     | CROSS SECTIONS        |
| 27        | BUBBLE MAP            |
| 28        | FINAL PLAT            |

## BENCHMARKS

- BM#1 T-POST SET IN GROUND 5' WEST AND 5' SOUTH OF THE NORTHEAST CORNER OF LOT 17, BLOCK 1, HAWTHORNE SECOND ADDITION. ELEV.=1373.35.
- BM#2 "T" POST 5'± N. ANS 5'± E. OF SW COR. OF RESERVE "K" AT NE CORNER OF WILLIAMSGATE AND MAINSGATE. ELEV.=1353.39.
- BM#3 "T" POST 56'± N AND 17'± W. OF CUSP OF CURVE AT SOUTH END OF RESERVE "J" ON CAMDEN CHASE. ELEV.=1361.18.



HAWTHORNE THIRD ADDITION - PHASE 2  
PROJECT NAME

TITLE SHEET  
SHEET TITLE

|                      |                   |                    |
|----------------------|-------------------|--------------------|
| DFL<br>DESIGN BY:    | MKEC<br>DRAWN BY: | GJA<br>CHECKED BY: |
| OCTOBER 2005<br>DATE | 02167<br>JOB NO.  | 1 / 28<br>SHEET/OF |