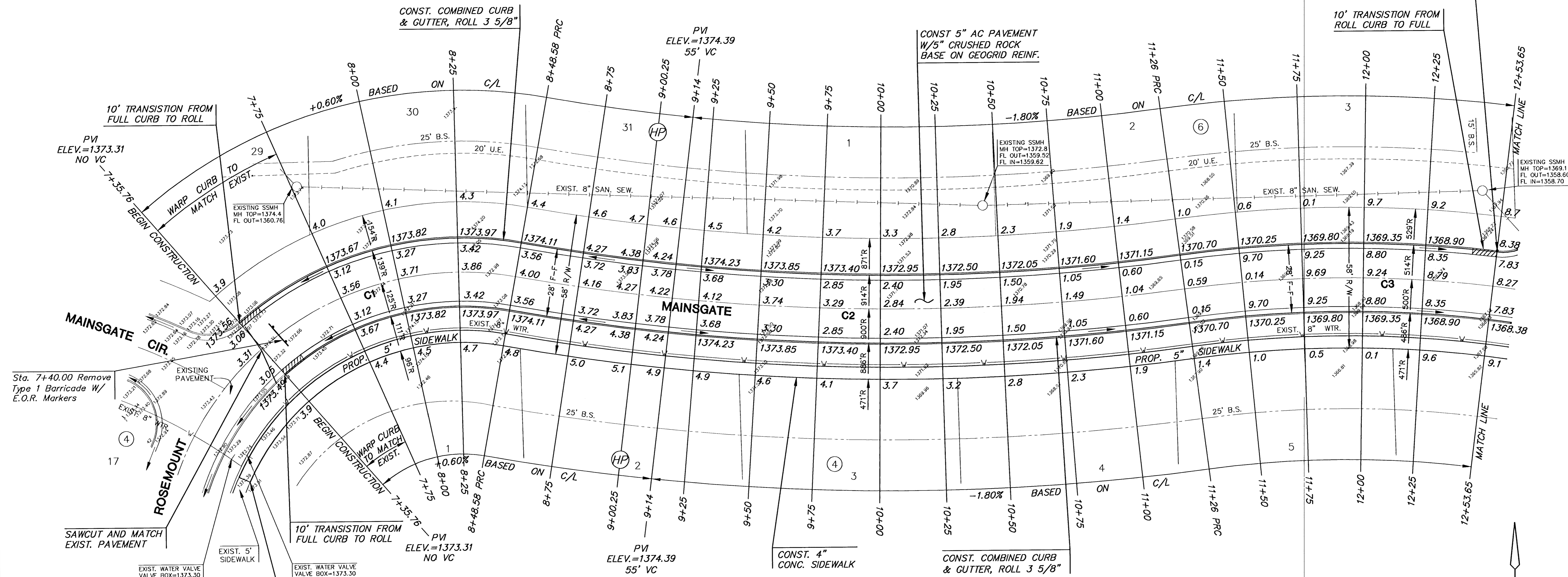


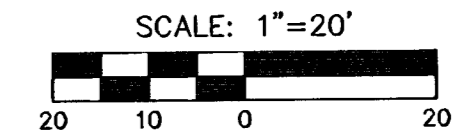
STA. 12+53.65 MAINSGATE
INSTALL SUBDIVISION BENCHMARK
(NO. 8134-08, KANSAS BLUE PRINT CO.)



HAWTHORNE THIRD ADDITION

LEGEND

+ + STREET SIGN & SIGN LOCATION
(SEE SIGN ASSEMBLY TABLE
FOR TYPE & STATION OF SIGN)



NOTE:
TOP OF CURB ELEVATIONS SHOWN
ARE FOR FULL CURB. CONSTRUCT
CURB AND GUTTER AS NOTED.

CURVE TABLE - C1

$\Delta = 61^{\circ}53'43''$ R = 125.00' T = 74.95' L = 135.03' LC = 128.56'

CURVE DATA BASED ON CENTERLINE $\Delta/2 = 30^{\circ}56'52''$

STATION	ARC	CHORD LENGTH		DEFLECTION	TOTAL DEFLECTION
		8'off LtCb	8'off RtCb		
7+13.55	-	-	-	00'00"00"	00'00"00"
7+25.00	11.45'	13.46'	9.43'	02'37"27"	02'37"27"
7+35.76	10.76'	12.65'	8.86'	02'27"58"	05'05"25"
7+50.00	14.24'	16.74'	11.73'	03'15"49"	08'21"13"
7+75.00	25.00'	29.35'	20.57'	05'43"46"	14'05"00"
8+00.00	25.00'	29.35'	20.57'	05'43"46"	19'48"46"
8+25.00	25.00'	29.35'	20.57'	05'43"46"	25'32"33"
8+48.58	23.58'	27.69'	19.40'	05'24"19"	30'56"52"

Def/Ft = 13.75099 Min.

CURVE TABLE - C2

$\Delta = 17^{\circ}39'40''$ R = 900.00' T = 139.82' L = 277.42' LC = 276.32'

CURVE DATA BASED ON CENTERLINE $\Delta/2 = 08^{\circ}49'50''$

STATION	ARC	CHORD LENGTH		DEFLECTION	TOTAL DEFLECTION
		8'off LtCb	8'off RtCb		
8+48.58	-	-	-	00'00"00"	00'00"00"
8+75.00	26.42'	25.77'	27.06'	00'50"28"	00'50"28"
8+99.46	24.46'	23.86'	25.06'	00'46"43"	01'37"10"
9+00.00	.54'	.53'	.55'	00'01"02"	01'38"12"
9+15.00	15.00'	14.63'	15.37'	00'28"39"	02'06"51"
9+25.00	10.00'	9.76'	10.24'	00'19"06"	02'25"57"
9+50.00	25.00'	24.39'	25.61'	00'47"45"	03'13"42"
9+75.00	25.00'	24.39'	25.61'	00'47"45"	04'01"27"
10+00.00	25.00'	24.39'	25.61'	00'47"45"	04'49"11"
10+25.00	25.00'	24.39'	25.61'	00'47"45"	05'36"56"
10+50.00	25.00'	24.39'	25.61'	00'47"45"	06'24"41"
10+75.00	25.00'	24.39'	25.61'	00'47"45"	07'12"26"
11+00.00	25.00'	24.39'	25.61'	00'47"45"	08'00"11"
11+25.00	25.00'	24.39'	25.61'	00'47"45"	08'47"55"
11+26.00	1.00'	.98'	1.02'	00'01"55"	08'49"50"

Def/Ft = 1.90986 Min.

CURVE TABLE - C3

$\Delta = 18^{\circ}53'15''$ R = 500.00' T = 83.17' L = 164.82' LC = 164.08'

CURVE DATA BASED ON CENTERLINE $\Delta/2 = 09^{\circ}26'37''$

STATION	ARC	CHORD LENGTH		DEFLECTION	TOTAL DEFLECTION
		8'off LtCb	8'off RtCb		
11+26.00	-	-	-	00'00"00"	00'00"00"
11+50.00	24.00'	25.05'	22.94'	01'22"30"	01'22"30"
11+75.00	25.00'	26.10'	23.90'	01'25"57"	02'48"27"
12+00.00	25.00'	26.10'	23.90'	01'25"57"	04'14"24"
12+25.00	25.00'	26.10'	23.90'	01'25"57"	05'40"20"
12+50.00	25.00'	26.10'	23.90'	01'25"57"	07'06"17"
12+75.00	25.00'	26.10'	23.90'	01'25"57"	08'32"13"
12+90.82	15.82'	16.52'	15.13'	00'54"24"	09'26"37"

Def/Ft = 3.43775 Min.

MKEC ENGINEERING CONSULTANTS
411 N. WEBB ROAD
WICHITA, KS. 67206
316-684-9600

HAWTHORNE 3RD ADDITION - PHASE 2
PROJECT NAME

PAVING PLANS
SHEET TITLE

DFL DESIGN BY. MKEC DRAWN BY. GJA CHECKED BY.
OCTOBER 2005 DATE 02167 JOB NO. 8 / 28 SHEET/OF

H:\CIVIL\02167\DWG\PSD\MAINSGATE\3RD_PH2\02167.E1