

PAVING FOR CASTLE ROCK
W/ INCIDENTAL SWS IMPROVEMENTS

to serve

KRUG NORTH 2ND ADDITION - PH. III

Castle Rock and 24th St. N. from the north line of Lot 30, Block A,
to the east line of Lot 18, Block A
Spring Hollow St. from the west line of Castle Rock
north to the south line of Mainsgate
Mainsgate and Mainsgate Circle from 24th St. N.
to and including the cul-de-sac.
24th Ct. N. from the south line of 24th St. N.
south to and including the cul-de-sac

CITY OF WICHITA, KANSAS

James L. Armour, P.E. City Engineer

Project Number

472-84249

O.C.A. Number:
765967

Scale: 1" = 150'

GENERAL NOTES:

1. Contractor will be required to provide notice to utility companies a minimum of forty-eight (48) hours prior to any excavation, as follows:

Kansas One-Call 687-2470

The Contractor must notify the following in case of an emergency:

Cox Communications 262-4270
Kansas Gas Service 1-888-482-4950
Westar Energy 383-8650
Aquila Energy 1-800-303-0357
SBC 268-2245
City of Wichita Water Dept. 268-4563
City of Wichita Sewer Maint. 268-4024
City of Wichita Storm Sewer Maint. 268-4090
City of Wichita Traffic Maint. 268-4034
Conoco Pipeline Co. 1-800-231-2551
Southern Star Pipeline Co. 529-6600
Phillips Pipeline Co. 1-800-766-8230

2. Utility service lines, poles, valve boxes, meters, and etcetera are to be adjusted as necessary by others prior to construction unless the plans specifically call for their adjustment by the Contractor or unless the plans specifically identify a utility to be adjusted by its owner during construction. Existing utilities and their location, as shown on the plans, represent the best information obtainable for design. The Contractor will be required to work around existing utilities within the right-of-way which do not conflict with proposed construction.

3. Rubble from the removal of miscellaneous structures and excess excavation which is to be wasted shall be disposed of on sites to be provided by the Contractor. These sites shall be approved by the Engineer as to suitability, appearance and site location. Locations, in the opinion of the Engineer, that will leave an unsightly appearance will not be approved. All disposal sites must be approved by the Kansas Department of Health and Environment. Material either stockpiled or disposed of in a flood plain would require a Kansas State Board of Agriculture permit. Any material dumped in waters of the United States or wetlands is subject to U.S. Corps of Engineers permitting regulations. Any material buried or stockpiled beyond approved construction limits would require additional archaeological investigations unless buried in a previously approved borrow location.

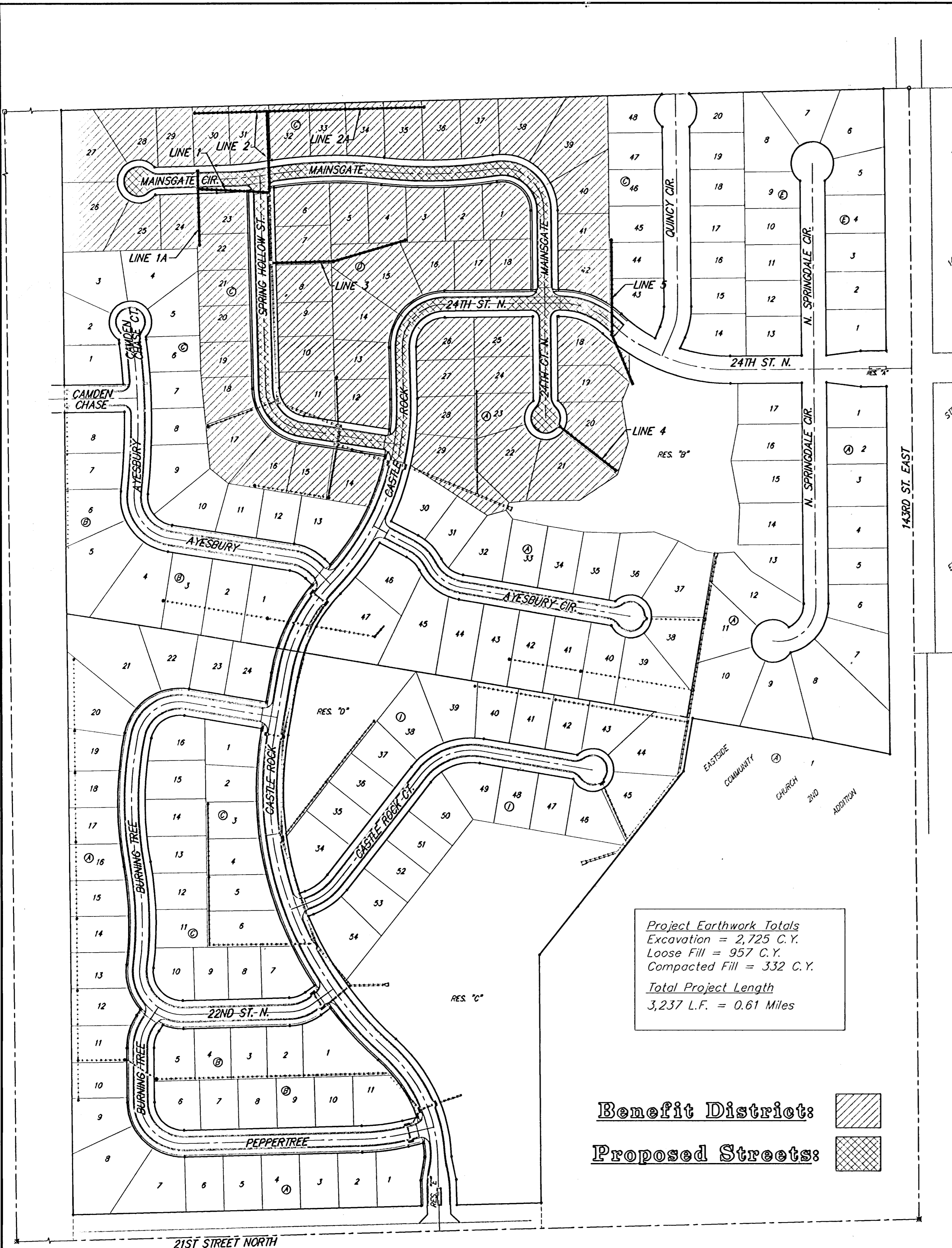
4. Trees and shrubs in public right-of-way which are in direct conflict with proposed new construction shall be removed by the Contractor with the Engineer's approval. Trees and shrubs which are not in direct conflict with proposed new construction shall be saved and protected from damage.

5. The Contractor shall give all property owners and/or tenants of developed property abutting the construction of this project a minimum of ten (10) days notice prior to start of construction.

6. The Contractor shall be responsible for preserving property irons. The Contractor will be required to re-establish any property irons which are damaged or destroyed by his construction operations. Such irons shall be re-established by a licensed land surveyor in accordance with state laws.

7. All existing and proposed erosion control measures including silt fencing, erosion control mat, straw bales, inlet barriers, and const. entrance shall be maintained throughout construction by the contractor and until project is accepted by the City of Wichita. The on-site engineer shall complete weekly reports on the status of erosion control measures. The contractor shall be required to comply with maintenance and/or replacement of erosion control measures as determined by the on-site engineer until project is accepted by City of Wichita. Maintenance and/or replacement of erosion control measures to be paid by L.S. bid item "Erosion Control BMP's."

8. All excess excavation shall remain on-site and shall be stockpiled or spread at a location determined by the engineer.

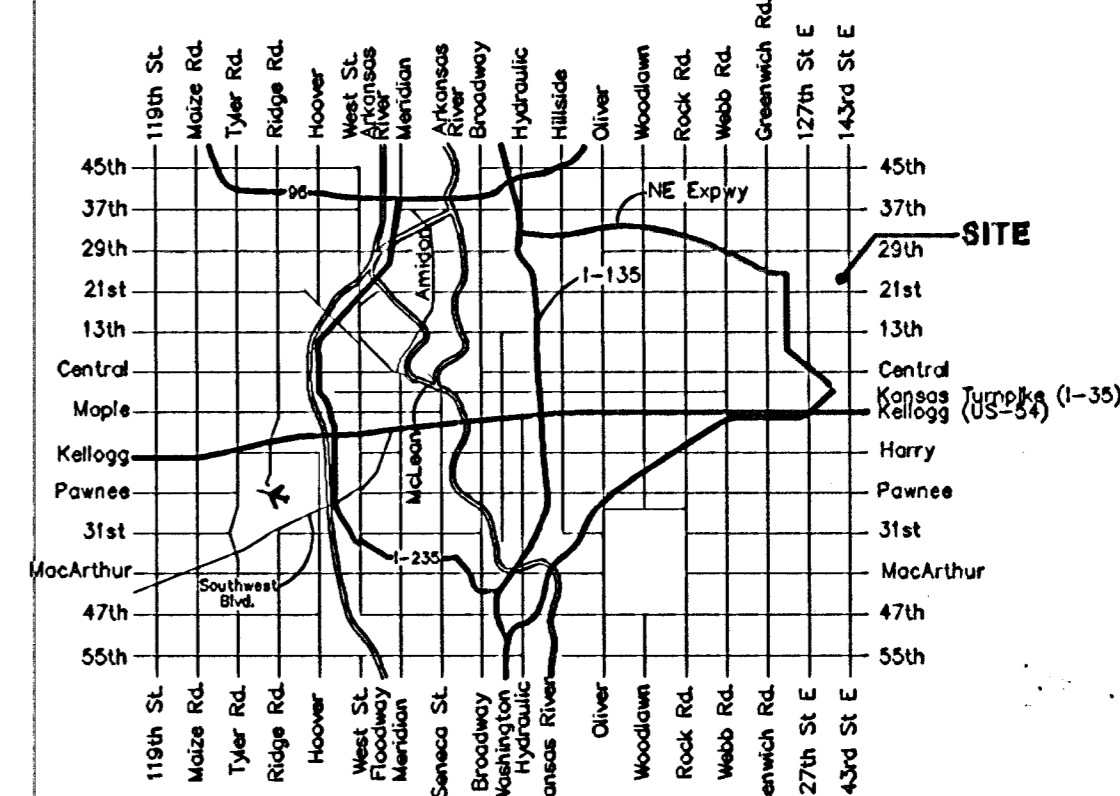


Project Earthwork Totals
Excavation = 2,725 C.Y.
Loose Fill = 957 C.Y.
Compacted Fill = 332 C.Y.

Total Project Length
3,237 L.F. = 0.61 Miles

Benefit District: [Hatched Box]

Proposed Streets: [Cross-hatched Box]



Vicinity Map

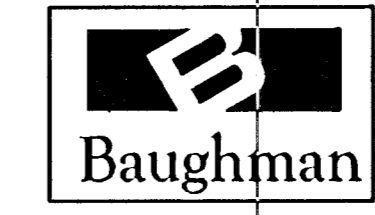
Benchmarks

BM #1: "□" Cut in middle of N headwall of RCBC on 21st St. North, 1004.3' W & 22.1' N of SE Cor., SE 1/4, Sec. 2, T-27-S, R-2-E.
Elev. = 173.23 City Datum

BM #2: "□" Cut at the SE corner of the intersection of Castle Rock & Castle Rock Ct., Krug North Addition.
Elev. = 183.50 City Datum

Sheet Index

Title Sheet	1
35' Pavement Detail	2
29' Pavement Detail	3
Sign Detail	4
Miscellaneous Details	5
Castle Rock/24th St. N.	6-8
Mainsgate Cir.	9
Mainsgate	10-11
24th Ct. N.	12
Spring Hollow St.	13-14
SWS Lines 1 & 1A	15
SWS Line 2	16
SWS Line 2A	17
SWS Line 3	18
SWS Line 4	19
SWS Line 5	20
Std. Type 1A Single Inlet Detail	21
Drop Inlet Detail	22
Special Yard Inlet Detail	23
RC Headwall Detail	24
Soil Erosion BMPs	25-28
Erosion Control/Esmt. Grading Plan	29
Coordinate Sheet	30
Street X-Sections	31-38
Copy of Plat	39



Baughman Company, P.A. 315 Ella St. Wichita, KS 67211 P 316-262-7271 F 316-262-0149
ENGINEERING | SURVEYING | PLANNING | LANDSCAPE ARCHITECTURE