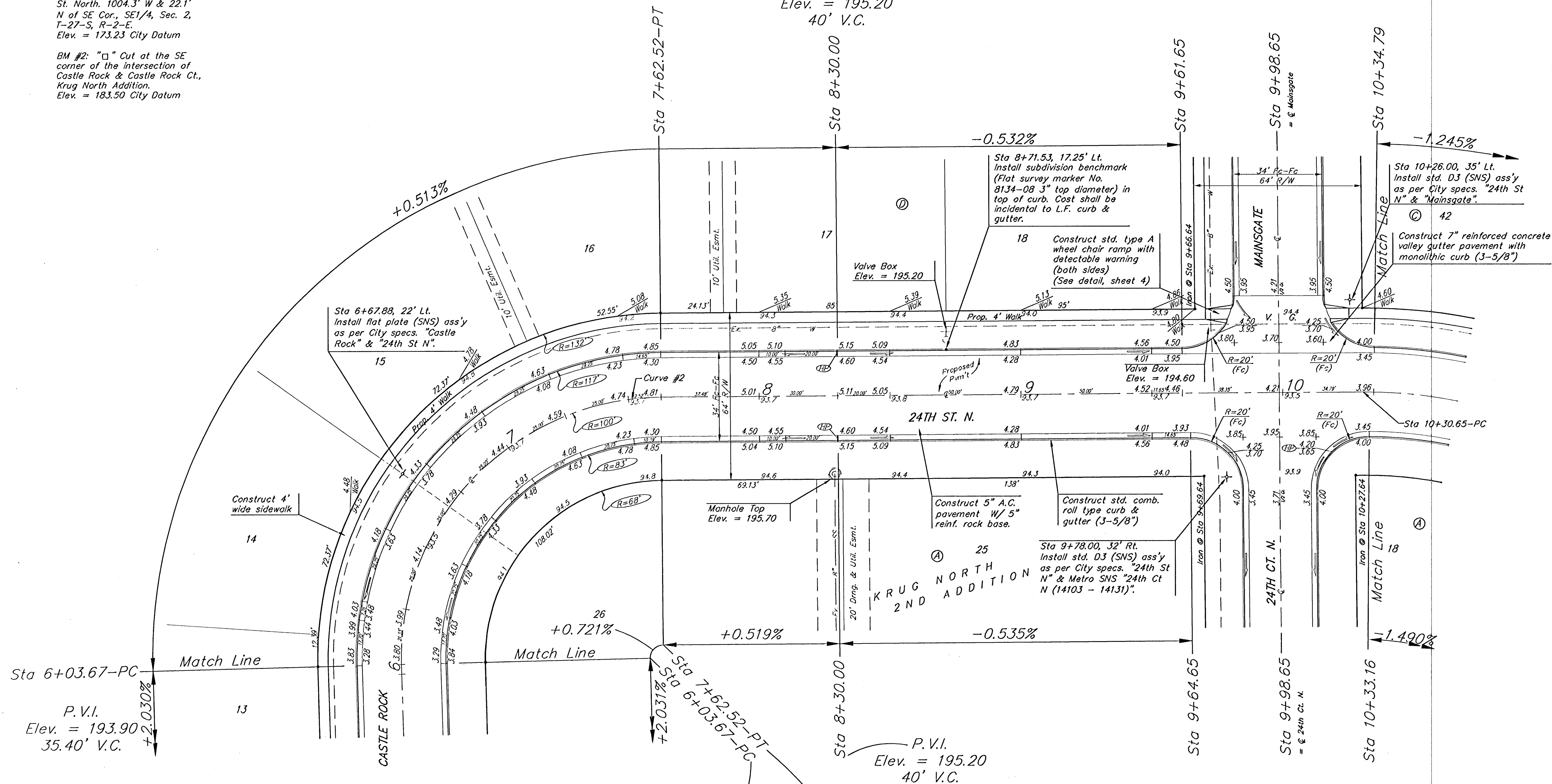


BENCHMARK:
 BM #1: "□" Cut in middle of N headwall of RCBC on 21st St. North. 1004.3' W & 22.1' N of SE Cor., SE1/4, Sec. 2, T-27-S, R-2-E.
 Elev. = 173.23 City Datum

BM #2: "□" Cut at the SE corner of the intersection of Castle Rock & Castle Rock Ct., Krug North Addition.
 Elev. = 183.50 City Datum

P.V.I.
 Elev. = 195.20
 40' V.C.

Scale: 1" = 20'
 • = Iron



Curve #2
 Curve Data Based on Centerline
 Rad. = 100' Delta = 91°00'46" Tangent = 101.78'
 Arc = 158.85' L.C. = 142.67' Def/Ft. = 17.18844 Min.

Station	Arc	FACE CHORD LENGTHS		Def.	T. Def.
		8' Lt.	8' Rt.		
6+03.67	-	-	-	0°00'00"	0°00'00"
6+25.00	21.33'	26.61'	15.97'	6°06'38"	6°06'38"
6+50.00	25.00'	31.17'	18.70'	7°09'42"	13°16'20"
6+75.00	25.00'	31.17'	18.70'	7°09'42"	20°26'03"
7+00.00	25.00'	31.17'	18.70'	7°09'42"	27°35'46"
7+25.00	25.00'	31.17'	18.70'	7°09'42"	34°45'28"
7+50.00	25.00'	31.17'	18.70'	7°09'42"	41°55'11"
7+62.52	12.52'	15.64'	9.38'	3°35'12"	45°30'23"

P.V.I.
 Elev. = 193.90
 35.40' V.C.

P.V.I.
 Elev. = 194.85
 No V.C.

NOTE: ROLL TYPE CURB & GUTTER TO BE CONSTRUCTED ON THE PAVEMENT SHOWN ON THIS SHEET. TOP OF CURB ELEVATIONS ARE GIVEN FOR FULL HEIGHT CURB.

		KRUG NORTH 2ND ADD. - PH. III 24TH ST. N. STA 6+03.67 TO STA 10+34.79	
<small>Baughman Company, P.A. 315 Ellis St. Wichita, KS 67211 P 316-262-7111 F 316-262-0149 ENGINEERING SURVEYING PLANNING LANDSCAPE ARCHITECTURE</small>			
PROJECT NUMBER 472-94249	DESIGNED ATD	DRAWN TMS	DATE 01/06
REVISIONS	APPROVED	SCALE Noted	SHEET 7 OF 39
<small>KrugNorth2ndPhaseIIISe2</small>		<small>05-09-E368</small>	