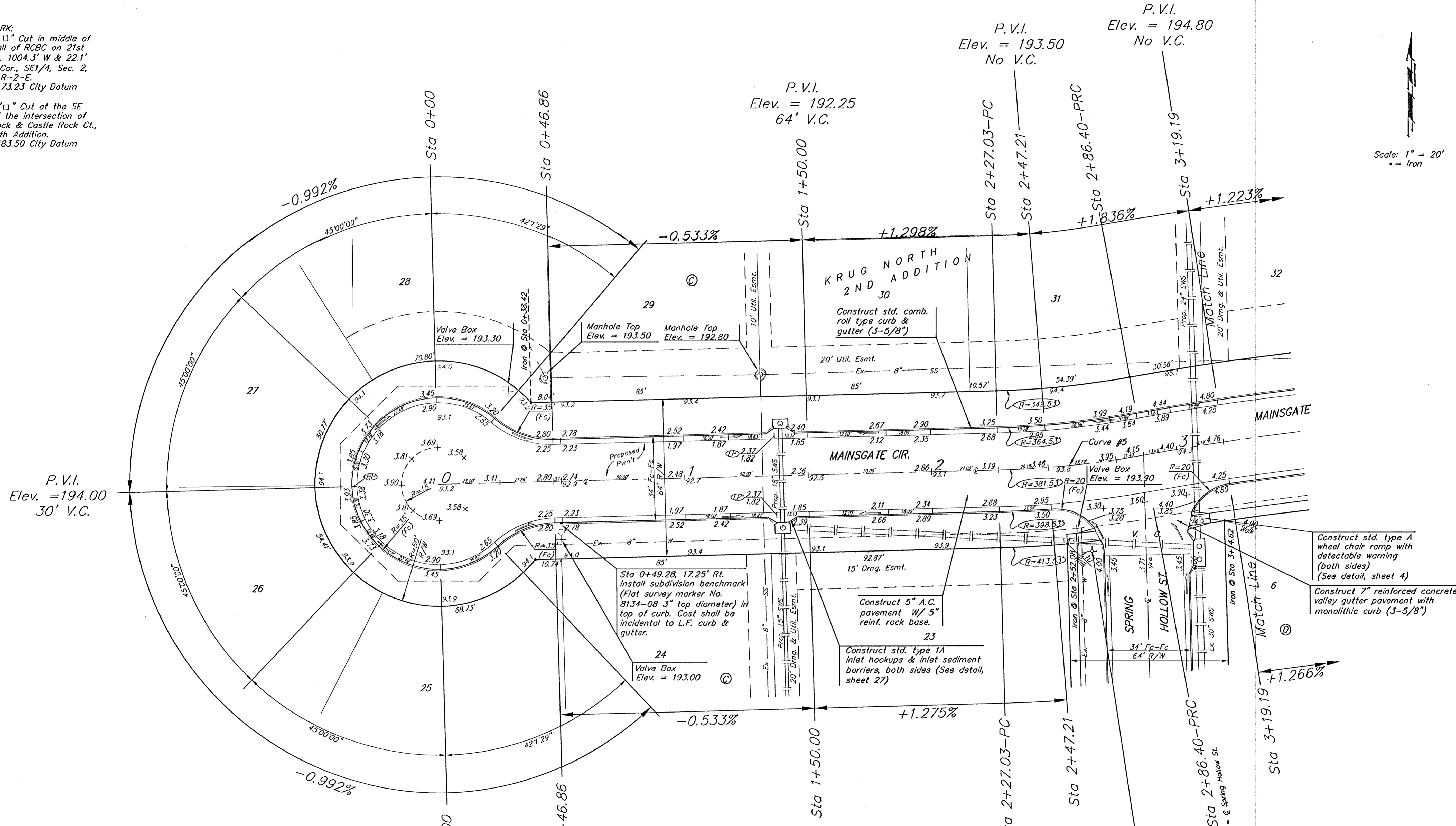


BENCHMARK:
 BM #1: "□" Cut in middle of
 N headwall of RCBC on 21st
 St. North. 1004.3' W & 22.1'
 N of SE Cor., SE1/4, Sec. 2,
 T-27-S, R-2-E.
 Elev. = 173.23 City Datum

BM #2: "□" Cut at the SE
 corner of the intersection of
 Castle Rock & Castle Rock Ct.,
 Krug North Addition.
 Elev. = 183.50 City Datum



Scale: 1" = 20'
 * = Iron

Curve #5
 Curve Data Based on Centerline
 Rad. = 381.53' Delta = 8° 54' 55" Tangent = 29.74'
 Arc = 59.37' L.C. = 59.31' Def/Fl. = 4.50494 Min.

Station	Arc	FACE CHORD LENGTHS		Defl.	T. Defl.
		8' Lt.	8' Rt.		
2+27.03	-	-	-	0°00'00"	0°00'00"
2+47.21	20.18'	18.85'	21.50'	1°30'54"	1°30'54"
2+50.00	2.79'	2.81'	2.97'	0°12'34"	1°43'29"
2+75.00	25.00'	23.36'	26.63'	1°52'37"	3°36'06"
2+86.40	11.40'	10.65'	12.15'	0°51'21"	4°27'27"

NOTE: ROLL TYPE CURB & GUTTER TO BE CONSTRUCTED ON THE PAVEMENT SHOWN ON THIS SHEET. TOP OF CURB ELEVATIONS ARE GIVEN FOR FULL HEIGHT CURB.

Baughman
 KRUG NORTH 2ND ADD. - PH. III
MAINSGATE CIR.
 STA 0+00 TO STA 3+19.19

PROJECT NUMBER 47254249	DESIGN ATD	DRAWN TMS
REVISIONS	APPROVED	DATE 01/06
	SCALE Noted	SHEET 9 OF 39

KrugNorth2ndPhaseIIISet4 0509E368