

BENCHMARK:
 BM #1: "□" Cut in middle of
 N headwall of RCBC on 21st
 St. North. 1004.3' W & 22.1'
 N of SE Cor., SE 1/4, Sec. 2,
 T-27-S, R-2-E.
 Elev. = 173.23 City Datum

BM #2: "□" Cut at the SE
 corner of the intersection of
 Castle Rock & Castle Rock Ct.,
 Krug North Addition.
 Elev. = 183.50 City Datum

Curve #6
 Curve Data Based on Centerline
 Rad. = 1000' Delta = 16° 36' 41" Tangent = 145.99'
 Arc = 289.92' L.C. = 288.91' Def/Ft. = 1.71889 Min.

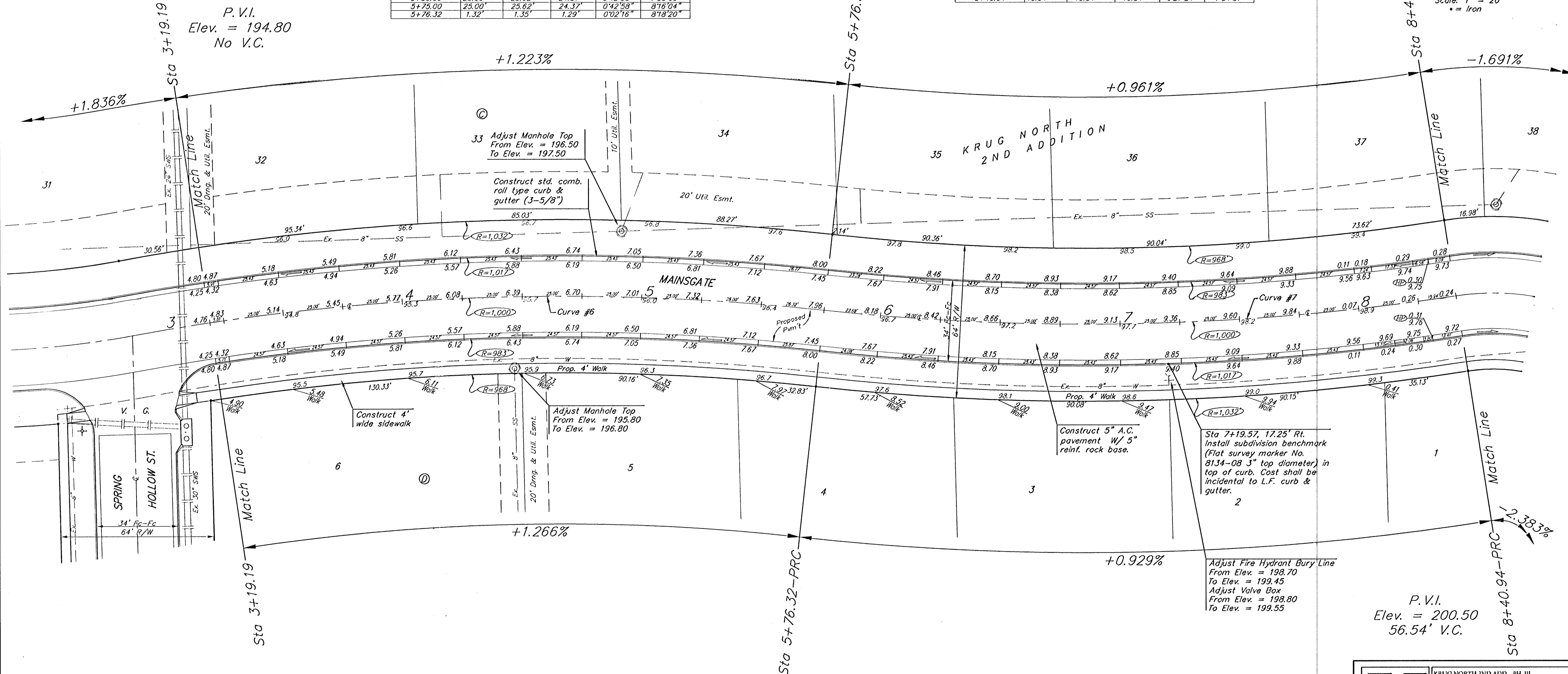
Station	Arc	FACE CHORD LENGTHS		Defl.	T. Defl.
		B' Lt.	B' Rt.		
2+86.40	-	-	-	0'00'00"	0'00'00"
3+19.19	32.79'	33.61'	31.97'	0'56'22"	0'56'22"
3+25.00	5.81'	5.96'	5.66'	0'09'59"	1'06'21"
3+50.00	25.00'	25.62'	24.37'	0'42'58"	1'49'19"
3+75.00	25.00'	25.62'	24.37'	0'42'58"	2'32'17"
4+00.00	25.00'	25.62'	24.37'	0'42'58"	3'15'16"
4+25.00	25.00'	25.62'	24.37'	0'42'58"	3'58'14"
4+50.00	25.00'	25.62'	24.37'	0'42'58"	4'41'12"
4+75.00	25.00'	25.62'	24.37'	0'42'58"	5'24'11"
5+00.00	25.00'	25.62'	24.37'	0'42'58"	6'07'09"
5+25.00	25.00'	25.62'	24.37'	0'42'58"	6'50'07"
5+50.00	25.00'	25.62'	24.37'	0'42'58"	7'33'06"
5+75.00	25.00'	25.62'	24.37'	0'42'58"	8'16'04"
5+76.32	1.32'	1.35'	1.29'	0'02'16"	8'18'20"

Curve #7
 Curve Data Based on Centerline
 Rad. = 1000' Delta = 15'09' 42" Tangent = 133.09'
 Arc = 264.62' L.C. = 263.85' Def/Ft. = 1.71888 Min.

Station	Arc	FACE CHORD LENGTHS		Defl.	T. Defl.
		B' Lt.	B' Rt.		
5+76.32	-	-	-	0'00'00"	0'00'00"
6+00.00	23.68'	23.09'	24.27'	0'40'42"	0'40'42"
6+25.00	25.00'	24.37'	25.62'	0'42'58"	1'23'40"
6+50.00	25.00'	24.37'	25.62'	0'42'58"	2'06'39"
6+75.00	25.00'	24.37'	25.62'	0'42'58"	2'49'37"
7+00.00	25.00'	24.37'	25.62'	0'42'58"	3'32'35"
7+25.00	25.00'	24.37'	25.62'	0'42'58"	4'15'34"
7+50.00	25.00'	24.37'	25.62'	0'42'58"	4'58'32"
7+75.00	25.00'	24.37'	25.62'	0'42'58"	5'41'30"
8+00.00	25.00'	24.37'	25.62'	0'42'58"	6'24'29"
8+25.00	25.00'	24.37'	25.62'	0'42'58"	7'07'27"
8+40.94	15.94'	15.54'	16.34'	0'27'24"	7'34'51"

P.V.I.
 Elev. = 200.50
 66' V.C.

Scale: 1" = 20'
 = Iron



P.V.I.
 Elev. = 194.80
 No V.C.

P.V.I.
 Elev. = 198.00
 No V.C.

P.V.I.
 Elev. = 198.00
 No V.C.

P.V.I.
 Elev. = 200.50
 56.54' V.C.

NOTE: ROLL TYPE CURB & GUTTER TO BE CONSTRUCTED ON THE PAVEMENT SHOWN ON THIS SHEET. TOP OF CURB ELEVATIONS ARE GIVEN FOR FULL HEIGHT CURB.

	KRUG NORTH 2ND ADD. - PH. III	
	MAINSGATE	
STA 3+19.19 TO STA 8+40.94		
Baughman Company, P.A. 315 Elm St. Wexford, PA 15151 P 412-842-4900 F 412-842-4901		
PROJECT NUMBER 412-842-49	DESIGN ATD	DRAWN TMS
REVISIONS	APPROVED	DATE 01/06
	SCALE Noted	SHEET
	10 OF 39	
KrugNorth2ndVPhaseIII.Swg		05-09-E368